

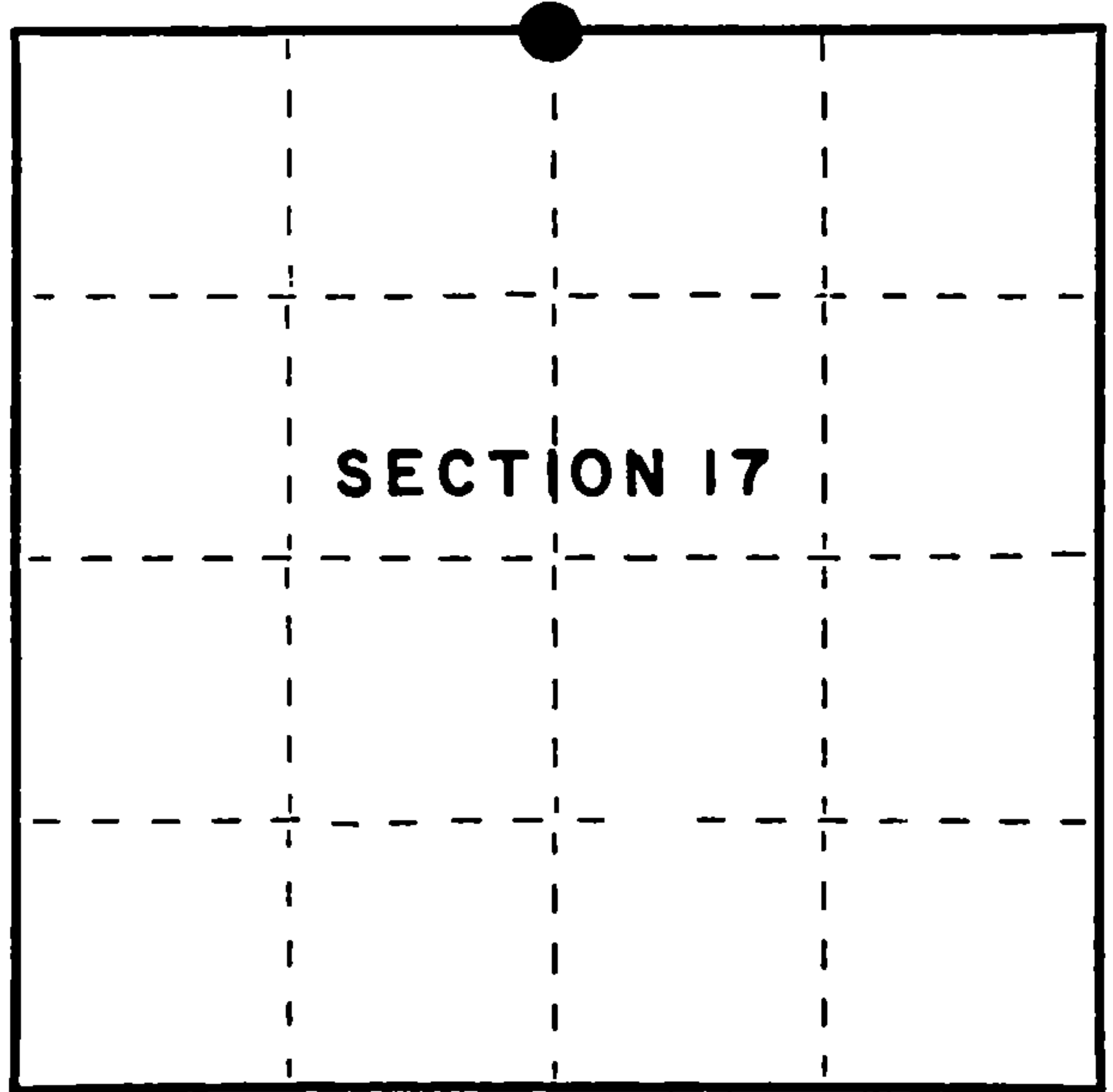
U.S. PUBLIC LAND SURVEY MONUMENT RECORD

Index No. J-7

State of Wisconsin }
County of Forest } ss.

I, Gary L. Pisoni, do hereby
certify that on the 16th day
of March, 1994, I found
evidence of the North Quarter
corner of Section 17
Township 37, North, Range
15 East, Fourth Principal Meridian,
as described hereon; and that from this evidence
I established a new monument and accessories
as described hereon to perpetuate the original
location of this corner.

Resident witnesses:



● = Corner monunient restored.

History of original corner establishment:
Original Government survey in 1865 by James L. Nowlin, Deputy Surveyor.
West corrected between Sections 8 & 17 at 40.08 chains, set Quarter Section post,
from which the following bear: Tamarack, 6", N 53° E, 8 Lks., Tamarack, 6", S52° W, 15 Lks.

Description of corner evidence found:
No corner evidence was recovered.
Corner located in a marsh.

I restored the corner position at proportionate distance and on line between the
Northeast and Northwest Section Corners of Section 17.

Description of monument and accessories I established to perpetuate the original location of this corner.
At the corner position, set a 2½" x 60" aluminum pipe monument, with an aluminum cap
stamped: T37N, R15E, 1/4, S.8, S.17, 1994, S-1634. Blazed and scribed the following
new bearing trees; (measurements are taken to a nail in side of tree)

Black Spruce	7"	N 16° E	163.22 feet
Balsam	5"	N 04° W	154.12 feet
Black Spruce	12"	N 22° W	172.55 feet
Steel Sign Post		S 42° W	1.40 feet

Dated at Iron River, MI, this 22nd day of April, 1994

Signature *Gary L. Pisoni* Title Land Surveyor Registration No. S-1634
(County Surveyor, Registered Land Surveyor, or other duly authorized official)

Office of Register of Deeds, County of Forest, I hereby certify that the within
instrument was filed in this office for record on the 20th day of March, 1997
at 1:30 o'clock P. M.

(Register of Deeds)
By *John Jankiewicz* Deputy

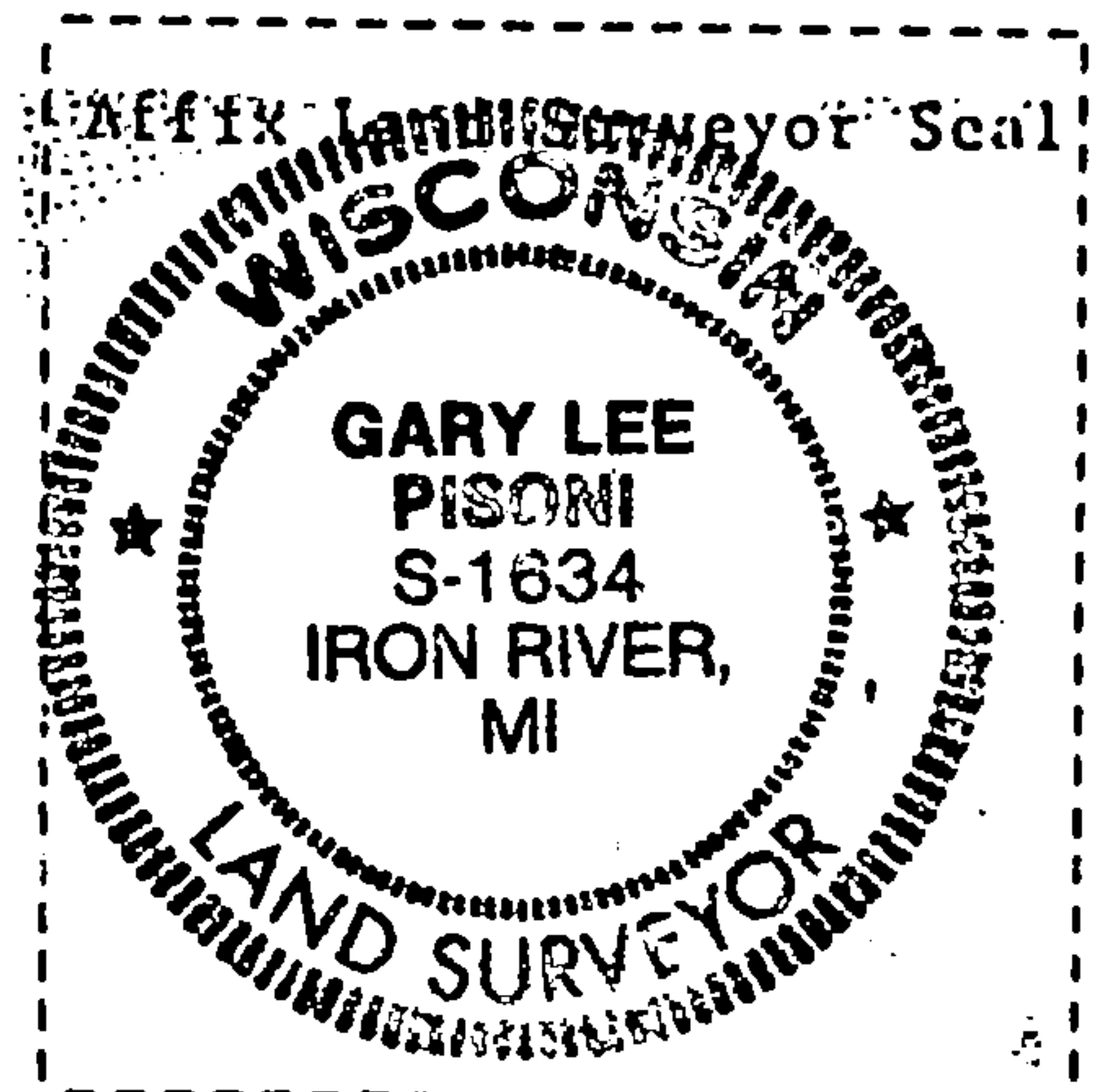
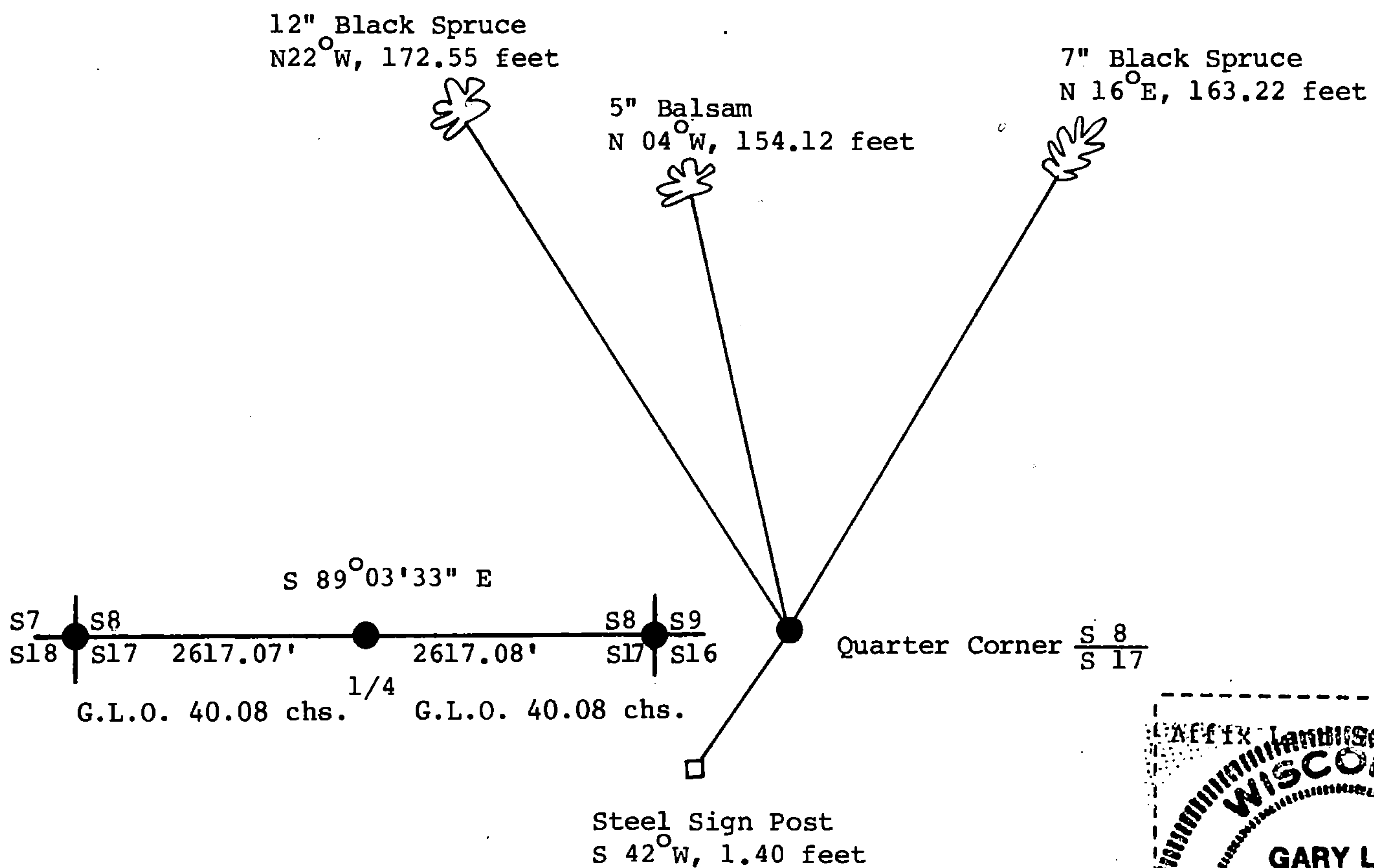
(e) Describe any material discrepancy between the location of the corner as restored or reestablished and the location of that corner as previously restored or reestablished by distance and direction. Show the discrepancy on the plan view drawing under (d), above. Show the distances between the corner as previously restored or reestablished and (1) the corner as restored or reestablished, and (2) to at least 2 of the witness monuments shown on the drawing in (d), above.

None

(f) Was the corner restored through acceptance of (1) an obliterated evidence location, or, (2) a found perpetuated location?

(g&h) Was the corner reestablished through lost corner proportionate methods? If so, show the method, including the directions and distances to other public land survey corners used as evidence or used for proportioning in determining the corner location?

Re-established through lost corner proportionate methods.



(i) I, Gary L. Pisoni
(type or print name) certify that the corner location shown on this record was determined by me or under my direction and control and that this U.S. Public Land Survey Monument Record is correct and complete to the best of my knowledge and belief.

Signature

Date