

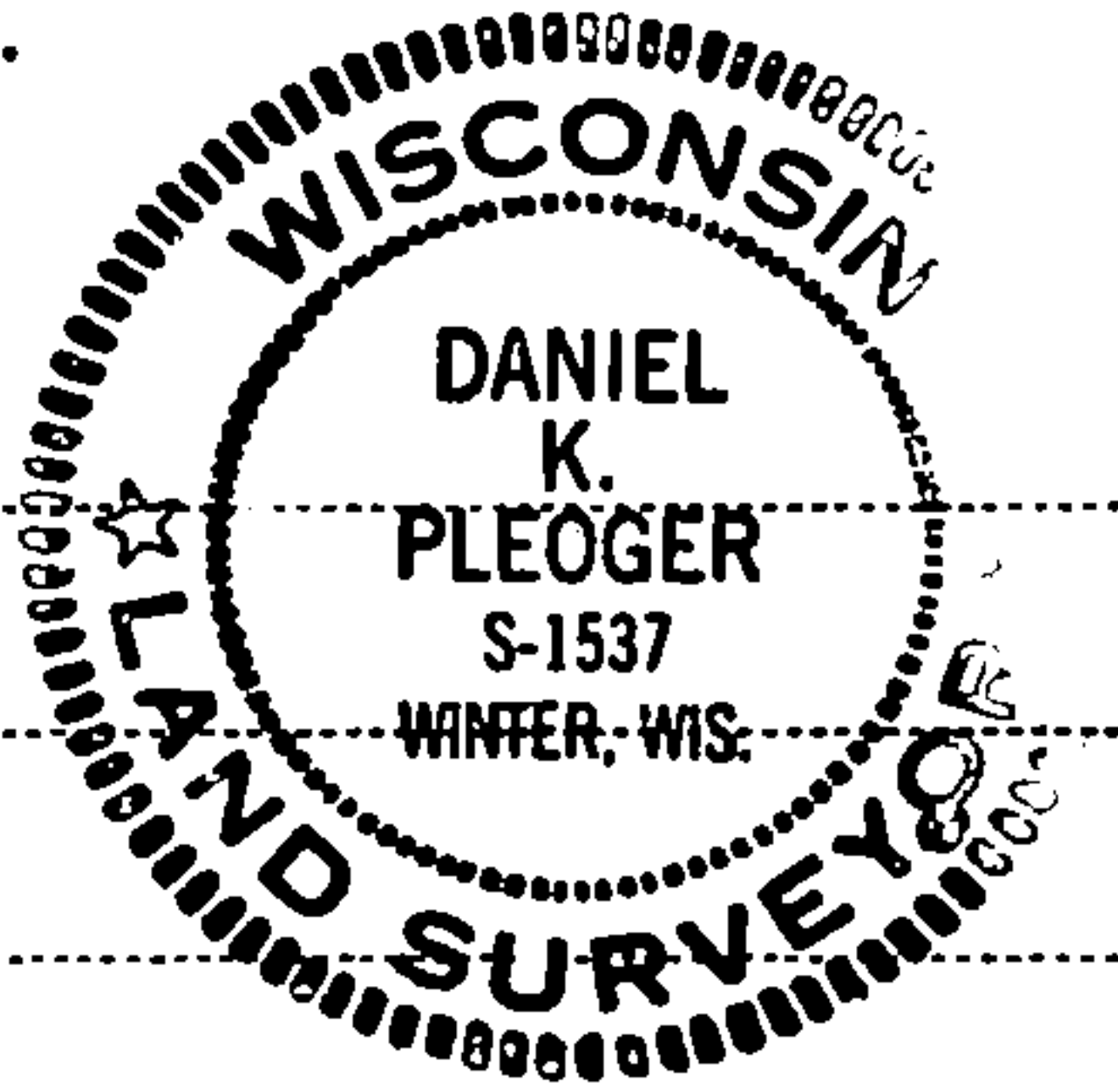
CERTIFIED LAND CORNER RESTORATION

Index No. **N-13**

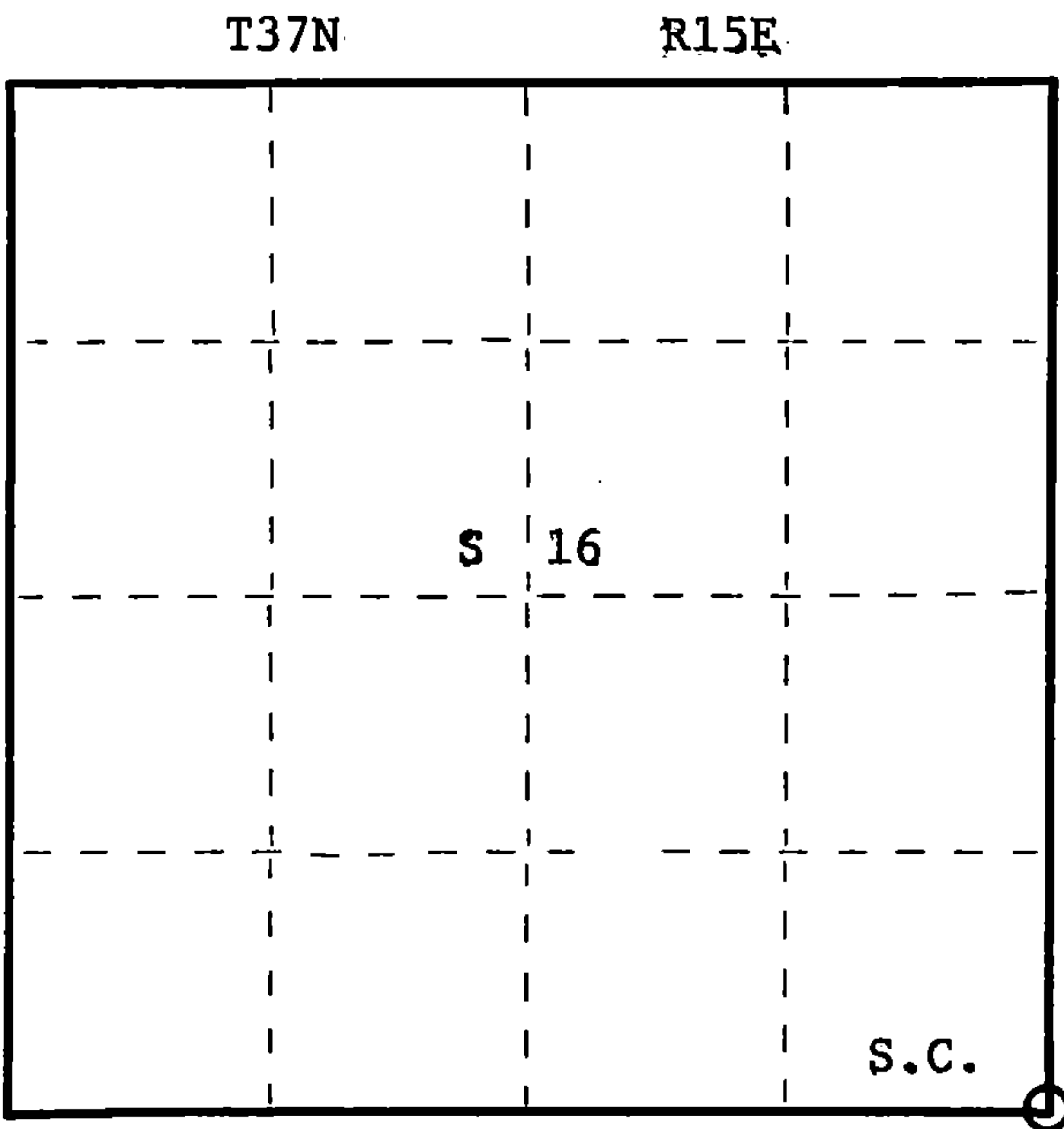
State of Wisconsin }
County of Forest } ss.

I Daniel K. Pleoger, do hereby
certify that on the 20th day
of October, 19 81, I found
evidence of the Section
corner of 15, 16, 21, 22
Township 37, North, Range
15 East, Fourth Principal Meridian,
as described hereon; and that from this evidence
I established a new monument and accessories
as described hereon to perpetuate the original
location of this corner.

Resident witnesses:



FORM 985 H. C. MILLER CO., MILWAUKEE



○ = Corner monument restored.

History of original corner establishment:
Original corner established by James Nowlin, Gov. deputy surveyor in 1865 from which
tamarack 12" bears N30E 13 lks and tamarack 10" bears N60W 8 lks.

Description of corner evidence found:
Recovered an old 3" squared cedar post, also recovered an old cedar stake driven along
side old post. Original tamarack 12" N30W 8 lks - we recovered an old tamarack
stump which bears N65W 9.8 lks badly rotten and burned.

Description of monument and accessories I established to perpetuate the original location of this corner.
Replaced old post with a 2 1/2" aluminum A-1 federal monument with alloy cap stamped:
Monument projects 12" above ground.

Marked NBTs:
Black spruce 5" S67E 17.55 ft.
Black spruce 6" N2°W 19.52 ft.
Cedar 6" N80W 22.10 ft.
Cedar 6" S42W 40.90 ft.
All scribed 1/4 - B.T.

T37N R15E
S.C. 16 | 15
21 | 22
S1537 - 1981

Dated at Rhinelander, Wis., this 10th day of March, 1982
Signature Daniel K. Pleoger Title Registered Land Surveyor Registration No. 1537
(County Surveyor, Registered Land Surveyor, or other duly authorized official)
Office of Register of Deeds, County of Forest, I hereby certify that the within
instrument was filed in this office for record on the 9th day of April, 19 82
at 11:00 o'clock A.M.

DOCUMENT NO. **121398**

(Register of Deeds)
By Deputy

43715160000



Stock No. 26273

158136

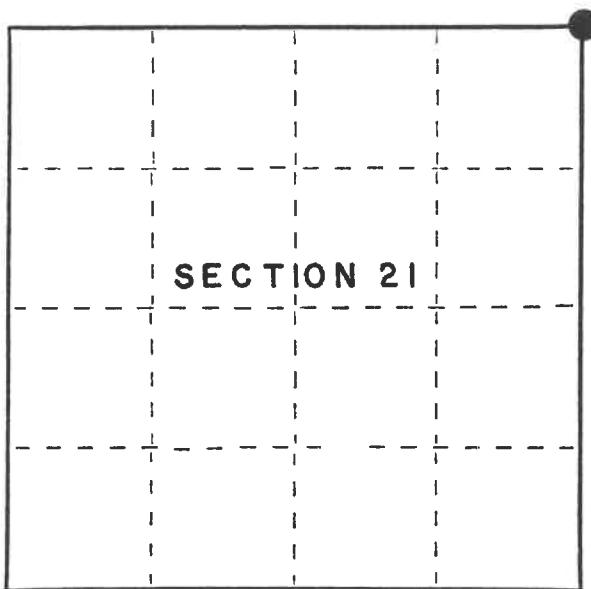
U.S. PUBLIC LAND SURVEY MONUMENT RECORD

Index No. N-13

State of Wisconsin }
 County of Forest } ss.

I, Gary L. Pisoni, do hereby
 certify that on the 9th day
 of February, 1994, I found
 evidence of the Northeast Section
 corner of Section 21
 Township 37, North, Range
15 East, Fourth Principal Meridian,
 as described hereon; and that from this evidence
 I established a new monument and accessories
 as described hereon to perpetuate the original
 location of this corner.

Resident witnesses:



● = Corner monument restored.

History of original corner establishment:

Original corner established by James L. Nowlin, Deputy Surveyor in 1865 from which
 Tamarack 12" bears N30°E 13 Lks and Tamarack 10" bears N60°W 8 Lks.

On 10-20-81, Daniel K. Pleoger found a 3" squared cedar post and old cedar stake driven
 along side old post and original Tamarack Bearing Trees. Accepted old wood post and
 replaced with a 2½" diameter aluminum pipe monument with an aluminum cap from which the
 following bear:

Black Spruce	5"	S 67°E	17.55 feet
Black Spruce	6"	N 02°W	19.52 feet
Cedar	6"	N 80°W	22.10 feet
Cedar	6"	S 42°W	40.90 feet

Description of corner evidence found:

Found monument as described above and the following bearing trees:

Black Spruce	7"	S 67°E	17.55 feet
Black Spruce	8"	N 02°W	19.75 feet
Cedar	10"	N 82°W	22.30 feet
Cedar	8"	S 40°W	40.80 feet

Description of monument and accessories I established to perpetuate the original location of this corner.

Set a Steel Sign Post, S 41°E 0.90 feet from monument.

Dated at Iron River, MI, Wis., this 22nd day of April, 1994.

Signature Gary L. Pisoni Title Land Surveyor Registration No. S-1634
 (County Surveyor, Registered Land Surveyor, or other duly authorized official)

Office of Register of Deeds, County of Forest, I hereby certify that the within
 instrument was filed in this office for record on the 20th day of March, 1997
 at 1:30 o'clock P M.

(Register of Deeds)

By Paul J. M. [Signature] Deputy

43715160000

(e) Describe any material discrepancy between the location of the corner as restored or reestablished and the location of that corner as previously restored or reestablished by distance and direction. Show the discrepancy on the plan view drawing under (d), above. Show the distances between the corner as previously restored or reestablished and (1) the corner as restored or reestablished, and (2) to at least 2 of the witness monuments shown on the drawing in (d), above.

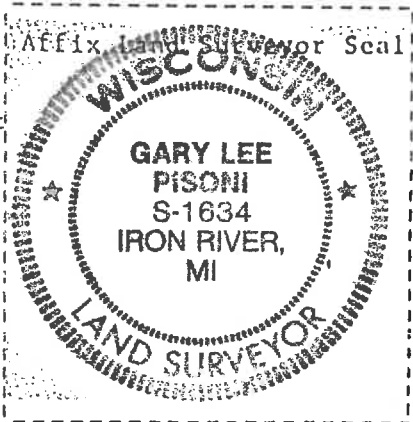
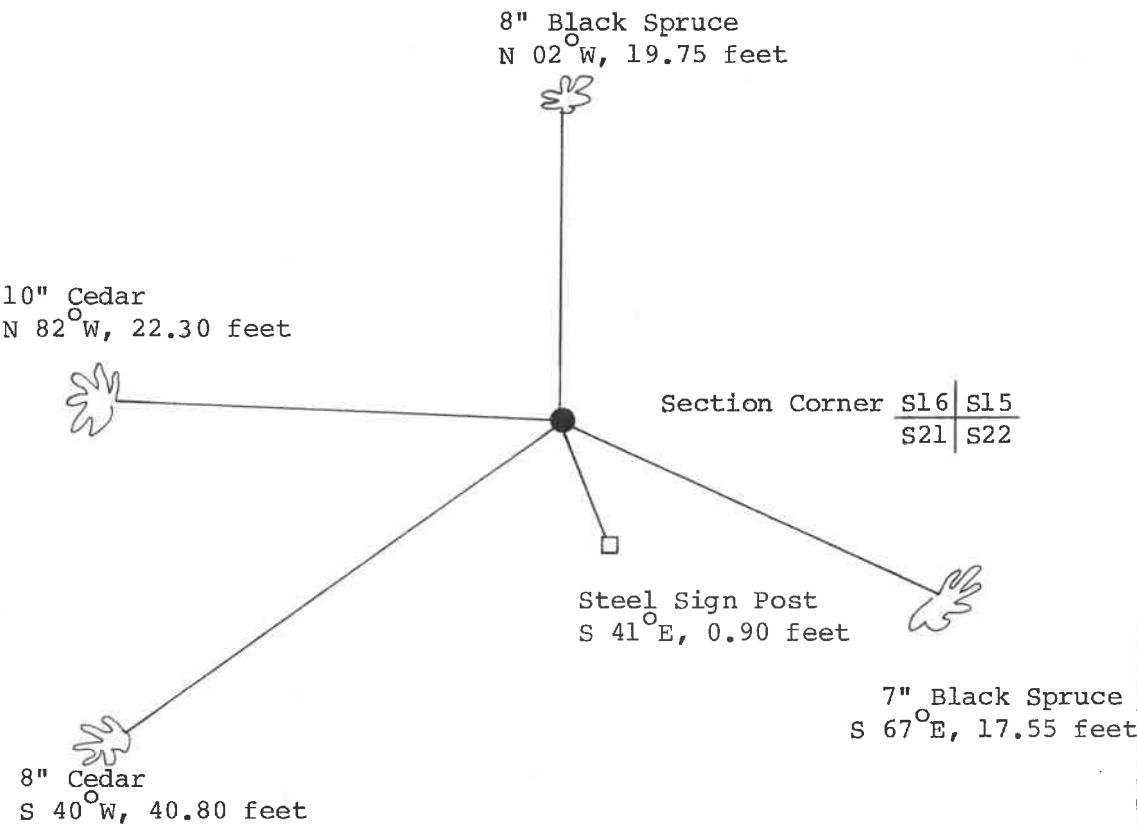
None

(f) Was the corner restored through acceptance of (1) an obliterated evidence location, or, (2) a found perpetuated location?

Restored through acceptance of a found perpetuated location.

(g&h) Was the corner reestablished through lost corner proportionate methods? If so, show the method, including the directions and distances to other public land survey corners used as evidence or used for proportioning in determining the corner location?

No



(i) I, Gary L. Pisoni
(type or print name) certify that the corner location shown on this record was determined by me or under my direction and control and that this U.S. Public Land Survey Monument Record is correct and complete to the best of my knowledge and belief.

Gary L. Pisoni 6-15-95
Signature Date