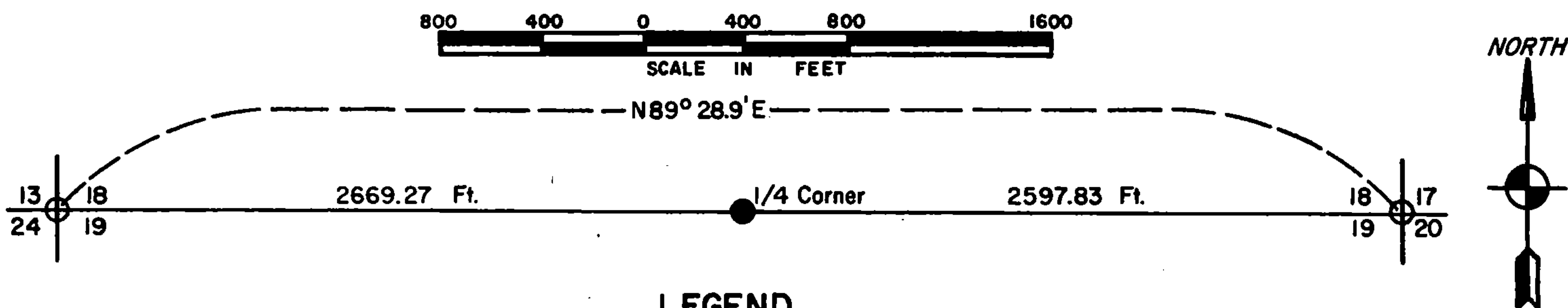


Sheet 1 of 1

CERTIFIED CORNER RESTORATION
BEING THE SOUTH QUARTER CORNER OF SECTION 18
TOWNSHIP 37 NORTH, RANGE 15 EAST
FOURTH PRINCIPAL MERIDIAN, COUNTY OF FOREST, STATE OF WISCONSIN

LEGEND

- 2 inch inside diameter galvanized iron pipe 3 feet long, filled with concrete with brass cap stamped to identify corner.
- Corners monumented and recorded previously.

Survey Notes

This survey of the south line of Section 18, Township 32 North, Range 15 East, Fourth Principal Meridian was made by the U.S. Department of Agriculture, Forest Service.

The purpose of this survey is to restore the quarter corner between Sections 18 and 19 according to Bureau of Land Management Rules and the Wisconsin Statutes.

Corner Restored1. Quarter corner between Sections 18-19.

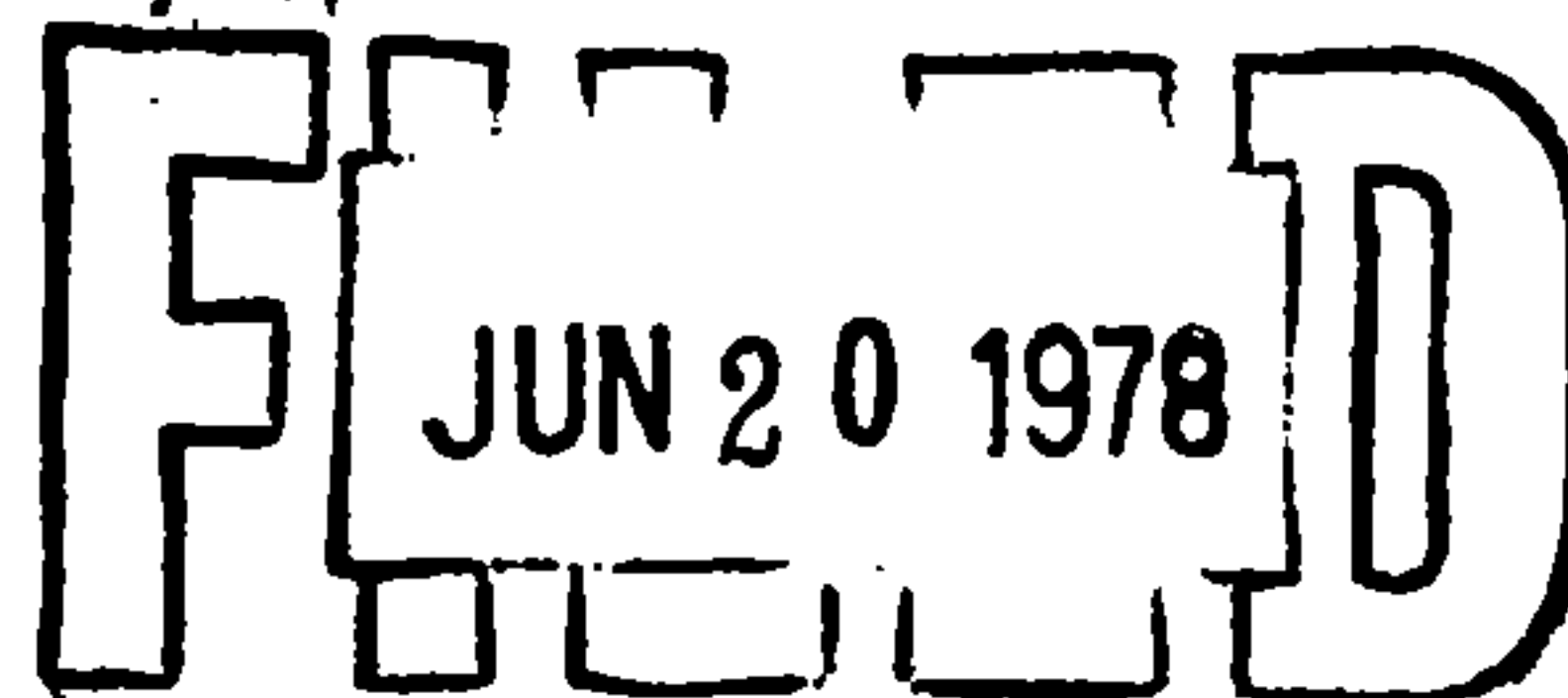
Restored quarter corner at proportional distance and on line between the section corners.

New Corner References:

Red Pine 7	N31E	44.73 feet
Scotch Pine 14	S53E	76.57 feet
Monument 0.4 feet below surface of road at driveway south		

DOCUMENT NUMBER

114053

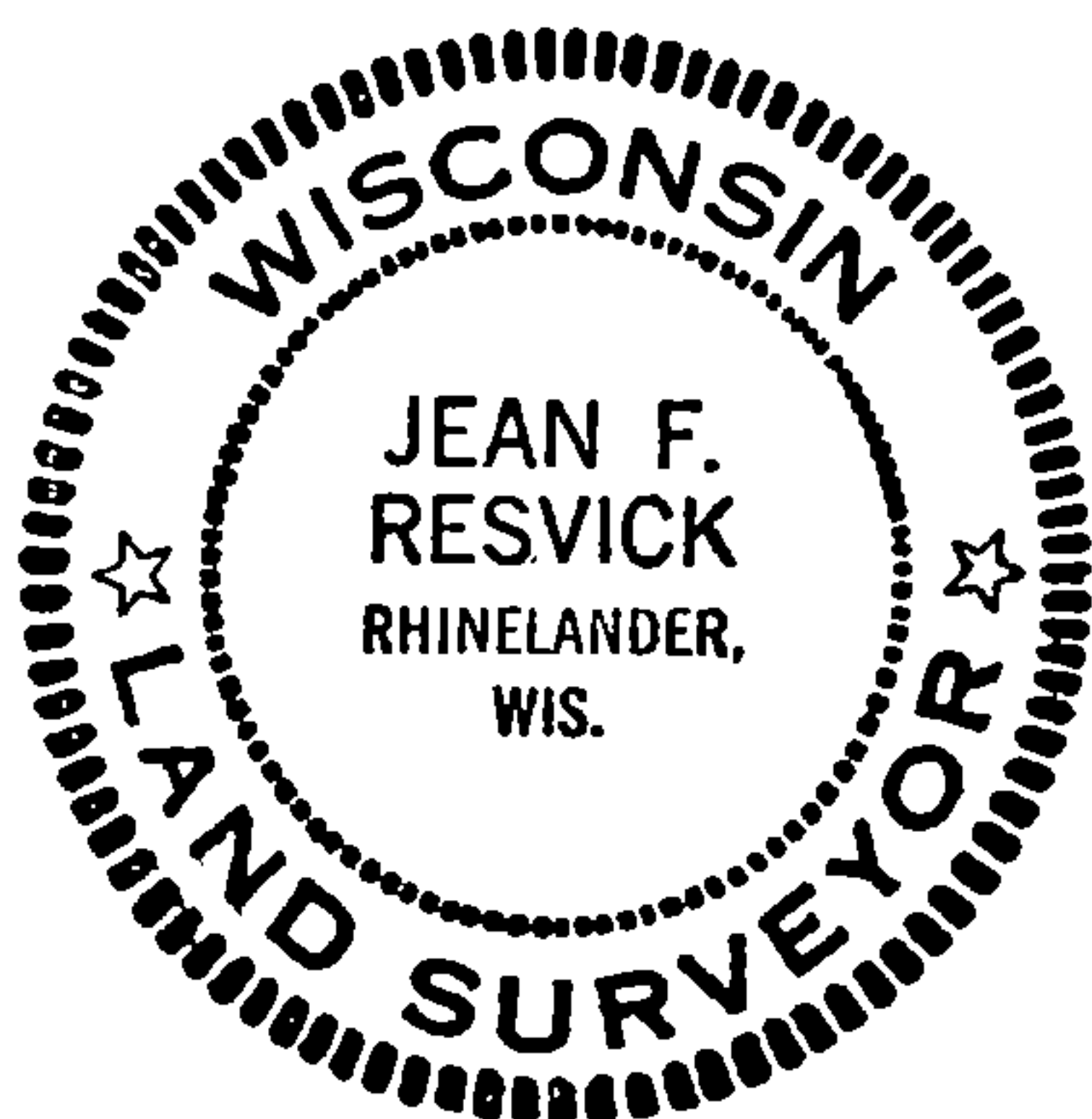
REGISTER'S OFFICE
FOREST COUNTY, WIS.Surveyor's Affidavit

State of Wisconsin) ss
County of Forest)

Eugene J. Statigay
Attest: 2:05 P.M.
Register of Deeds

I, Jean F. Resvick, Land Surveyor, U.S. Forest Service, and a registered land surveyor in the State of Wisconsin, hereby certify that I have restored the quarter corner between Sections 18 and 19, Township 37 North, Range 15 East, Fourth Principal Meridian, State of Wisconsin.

The plat map and survey notes are a correct representation of the corners recovered and restored.



Date of Survey: 1978

Jean F. Resvick
Land Surveyor, U.S. Forest Service
R.L.S. State of Wisconsin
Certificate S-802

4371518 0020

N-3

N
3

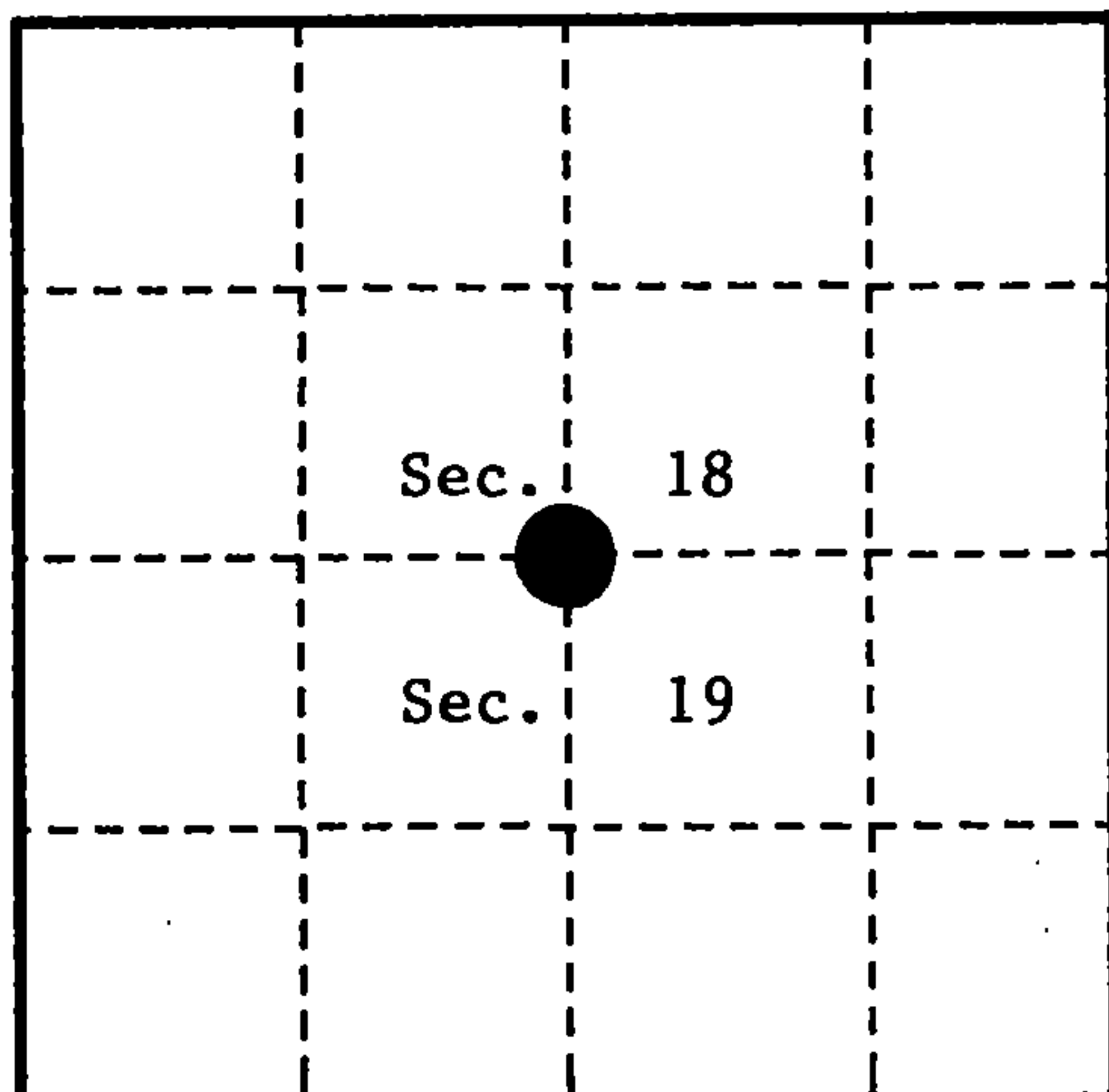
U. S. PUBLIC LAND SURVEY MONUMENT RECORD

INSTRUCTIONS:

This record shall show the location of the corner and shall include all of the following nine elements (a through i).

- (a) Identify the corner by reference to the U.S. public land survey system.
○ = Corner monument restored.

Quarter corner to Sections 18 and 19,
T.37N., R.15E., Forest County, Wisconsin.



- (b) Describe any record evidence, monument evidence, occupational evidence, testimonial evidence or any other material evidence you considered, and whether the monument was found or placed.

In 1865, James Nowlin set a wood post with the following BT's: Hemlock, 8", N.24°W., 15 links (9.90 feet); Birch, 18", S.14°W., 20 links (13.20 feet).

In 1934, L.M. Gibson (C.C.C.) fence line and road intersection found. Placed on fence post a metal poster north 10 feet of location.

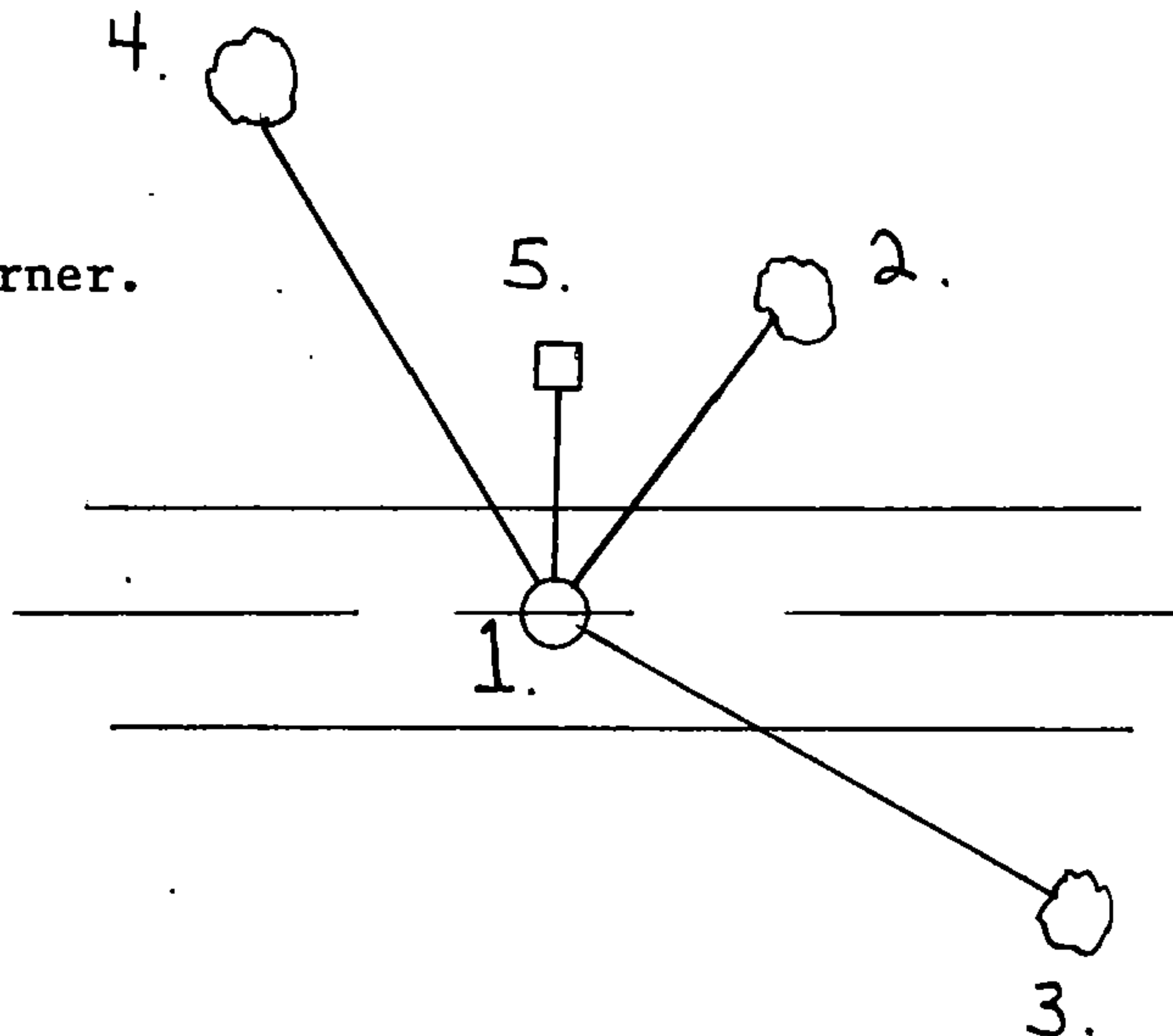
In 1978, Jean Resvick (R.L.S.) searched area and found no substantial evidence. Set corner by proportionate measure as follows; 2" galvanized pipe filled with concrete with a brass cap to identify corner; Red Pine, 7", N.31°E., 44.73 feet; Scotch Pine, 14", S.53°E., 76.57 feet. Monument 0.4 feet below surface of road at driveway leading south.

In 1991, Alan D. Harrison found corner as per Resvick, added new B.T.;

- (c) In the plan view drawing below, provide reference ties to at least 4 witness monuments, or, if the location is within a municipality, to at least 2 witness monuments. (witness monuments shall be made of concrete, natural stone, iron or other equally durable material.)

- (d) Show a plan view drawing depicting the relevant monuments and reference ties which is sufficient in detail to enable accurate relocation of the corner monument if the corner monument is disturbed. Indicate north.

1. 2" galvanized pipe with brass cap to identify corner.
2. Red Pine, 7", N.31°E., 44.73 feet
3. Scotch Pine, 14", S.53°E., 76.57 feet
4. Red Pine, 16", N.33°W., 73.07 feet
5. Steel Sign Post, North, 24.06 feet



REGISTER'S OFFICE
Forest County, Wis.

Received for record this 13th day
of May A.D., 1992 at
11:30 o'clock A.M. and recorded
in Vol. Corr. Restorations
page N-3

Paul H. Schenck
Register of Deeds

(a) Describe any material discrepancy between the location of the corner as restored or reestablished and the location of that corner as previously restored or reestablished by distance and direction. Show the discrepancy on the plan view drawing under (d), above. Show the distances between the corner as previously restored or reestablished and (1) the corner as restored or reestablished, and (2) to at least 2 of the witness monuments shown on the drawing in (d), above.

None

(f) Was the corner restored through acceptance of (1) an obliterated evidence location, or, (2) a found perpetuated location?

(2) a found perpetuated location

(g & h) Was the corner reestablished through lost corner proportionate methods? If so, show the method, including the directions and distances to other public land survey corners used as evidence or used for proportioning in determining the corner location?

No

(1) I, Alan D. Harrison

(type or print name) certify that the corner location shown on this record was determined by me or under my direction and control and that this U.S. Public Land Survey Monument Record is correct and complete to the best of my knowledge and belief.

Signature

Date

CERTIFICATE READY FOR FILING:

District Ranger

