

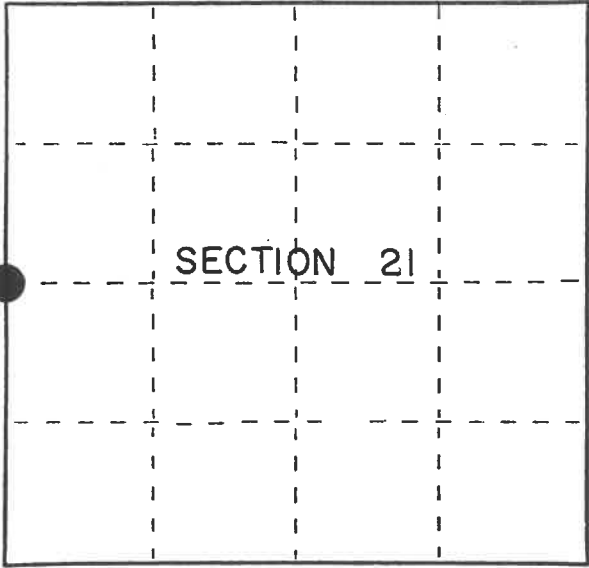
U.S. PUBLIC LAND SURVEY MONUMENT RECORD

Index No. P - 9

State of Wisconsin }  
County of Forest } ss.

I, Gary L. Pisoni, do hereby  
certify that on the 16th day  
of February, 1994, I found  
evidence of the West Quarter  
corner of Section 21  
Township 37, North, Range  
15 East, Fourth Principal Meridian,  
as described hereon; and that from this evidence  
I established a new monument and accessories  
as described hereon to perpetuate the original  
location of this corner.

Resident witnesses:



● = Corner monument restored.

History of original corner establishment:  
Original Government Survey in 1865 by J.L. Nowlin. North between Sections 20 and 21,  
at 40.00 chs., set Quarter Section Post from which the following bear;  
Spruce 12" S 04° E 25 Lks  
Birch 10" N 82° W 10 Lks  
In 1977, Jean Resvick, a Registered Land Surveyor with the U.S. Forest Service, restored  
the corner position at proportionate distance and on line between opposing Section  
Corners. At the corner position, set a 2" dia. galvanized iron pipe with a brass cap  
stamped; T37N R15E, 1/4, S20, S21, 1977, S-802. Blazed and scribed the following new  
bearing trees;  
White Spruce 8" S74° E 33.55 feet  
Description of corner evidence found: Red Maple 7" S63° W 27.51 feet  
Steel Sign Post West 0.50 feet

Found the monument as described above and the following bearing trees;  
White Spruce 8" S73° E 33.55 feet  
Red Pine 8" S63° W 27.51 feet  
Steel Sign Post S87° W 0.52 feet

Description of monument and accessories I established to perpetuate the original location of this corner.  
Blazed and scribed the following new bearing trees; (Measurements are taken to a nail  
in side of tree)  
Red Pine 5" N61° E 32.23 feet  
Sugar Maple 5" N11° E 8.86 feet  
Iron Pipe 1" dia. N58° W 10.55 feet

Dated at Iron River, MI, Wis., this 5th day of May, 1994  
Signature: Gary L. Pisoni Title: Land Surveyor Registration No. S-1634  
(County Surveyor, Registered Land Surveyor, or other duly authorized official)  
Office of Register of Deeds, County of Forest, I hereby certify that the within  
instrument was filed in this office for record on the 20th day of March, 1997  
at 1:30 o'clock P M.

(Register of Deeds)  
By: [Signature] Deputy

FORM NO. 985-A  
H.C. Miller Company  
Stock No. 26273  
158137

4371520200

(e) Describe any material discrepancy between the location of the corner as restored or reestablished and the location of that corner as previously restored or reestablished by distance and direction. Show the discrepancy on the plan view drawing under (d), above. Show the distances between the corner as previously restored or reestablished and (1) the corner as restored or reestablished, and (2) to at least 2 of the witness monuments shown on the drawing in (d), above.

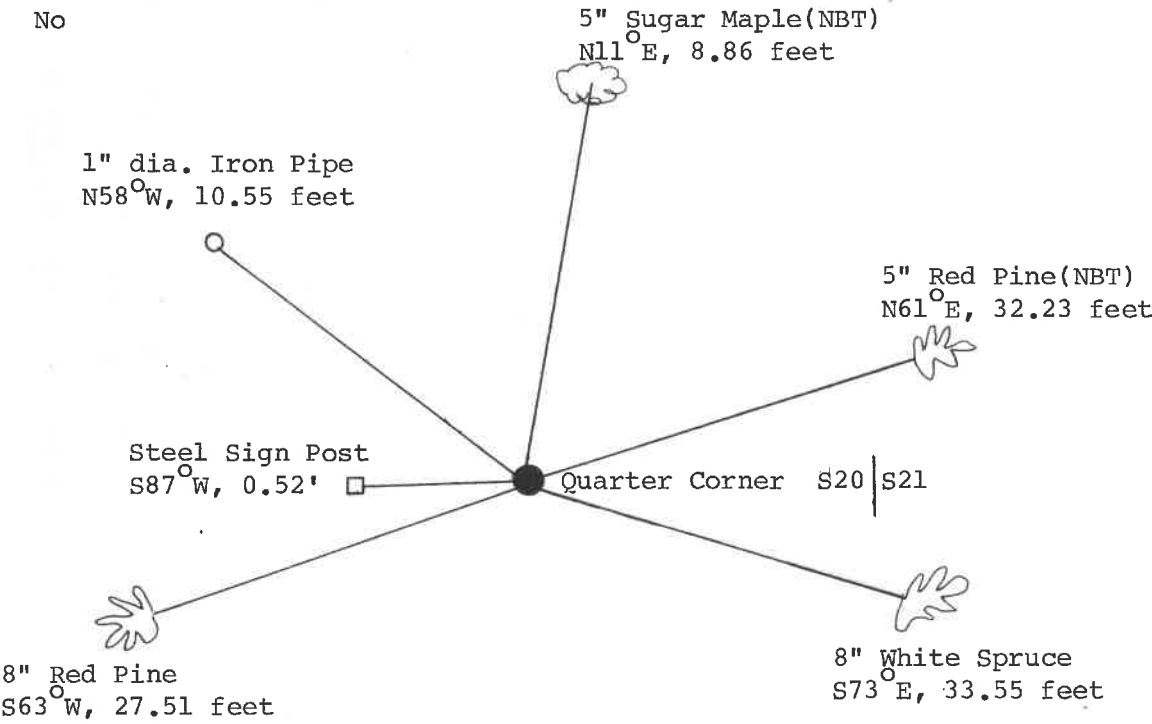
None

(f) Was the corner restored through acceptance of (1) an obliterated evidence location, or, (2) a found perpetuated location?

Restored through acceptance of a found perpetuated location.

(g&h) Was the corner reestablished through lost corner proportionate methods? If so, show the method, including the directions and distances to other public land survey corners used as evidence or used for proportioning in determining the corner location?

No



(i) I, Gary L. Pisoni  
(type or print name) certify that the corner location shown on this record was determined by me or under my direction and control and that this U.S. Public Land Survey Monument Record is correct and complete to the best of my knowledge and belief.

Gary L. Pisoni  
Signature

9-18-95  
Date