

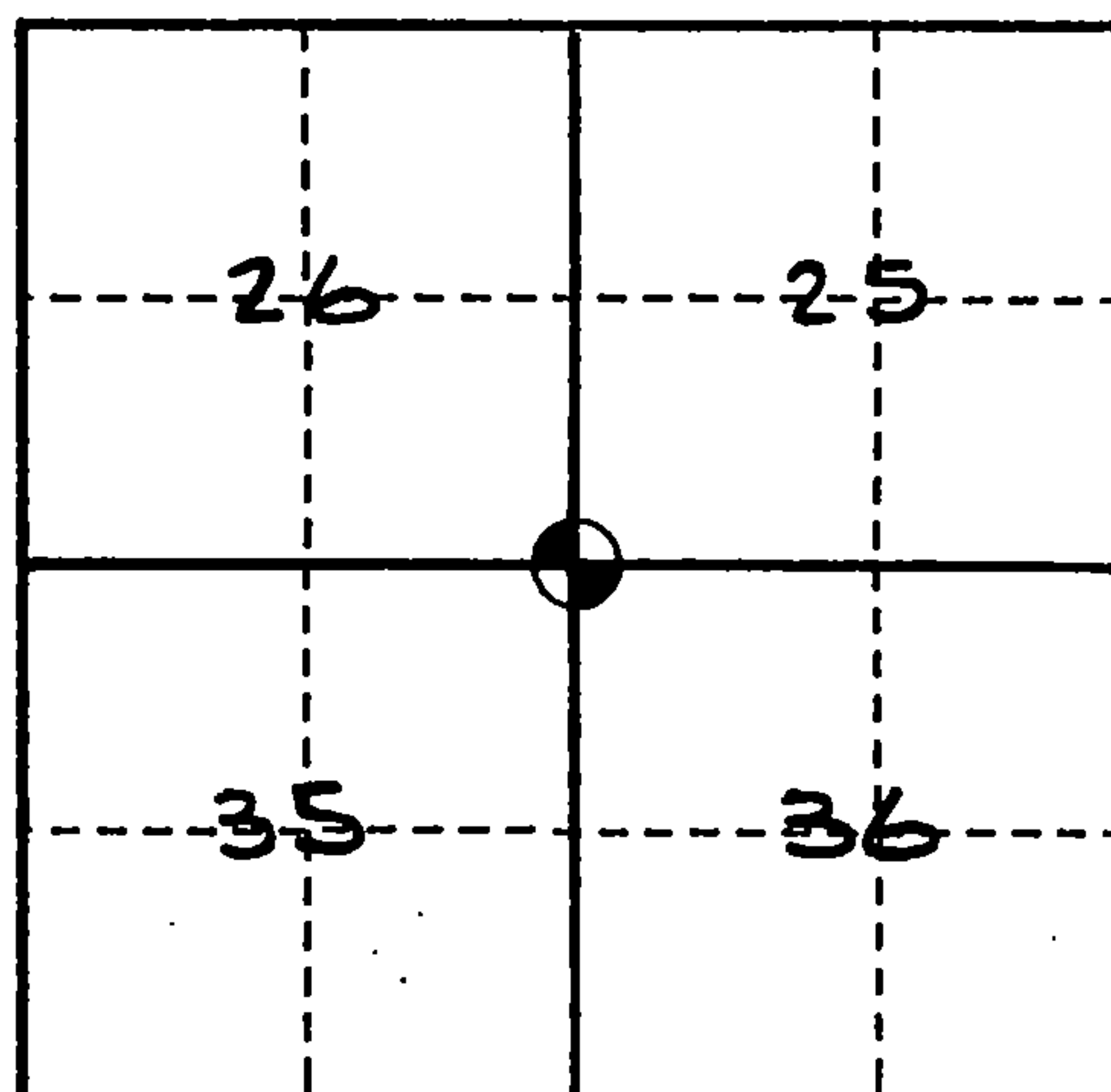
## U. S. PUBLIC LAND SURVEY MONUMENT RECORD

## INSTRUCTIONS:

This record shall show the location of the corner and shall include all of the following nine elements (a through i).

- (a) Identify the corner by reference to the U.S. public land survey system.  
 ○ = Corner monument restored.

Section corner common to Sections 26, 25, 35, and 36, T37N, R15E, Forest County, WI.



- (b) Describe any record evidence, monument evidence, occupational evidence, testimonial evidence or any other material evidence you considered, and whether the monument was found or placed.

Original survey by J.L. Nowlin in August 1865.

80.00 chains north, set section corner post.

20" birch - S48°E, 100 links

18" birch - N35°E, 9 links

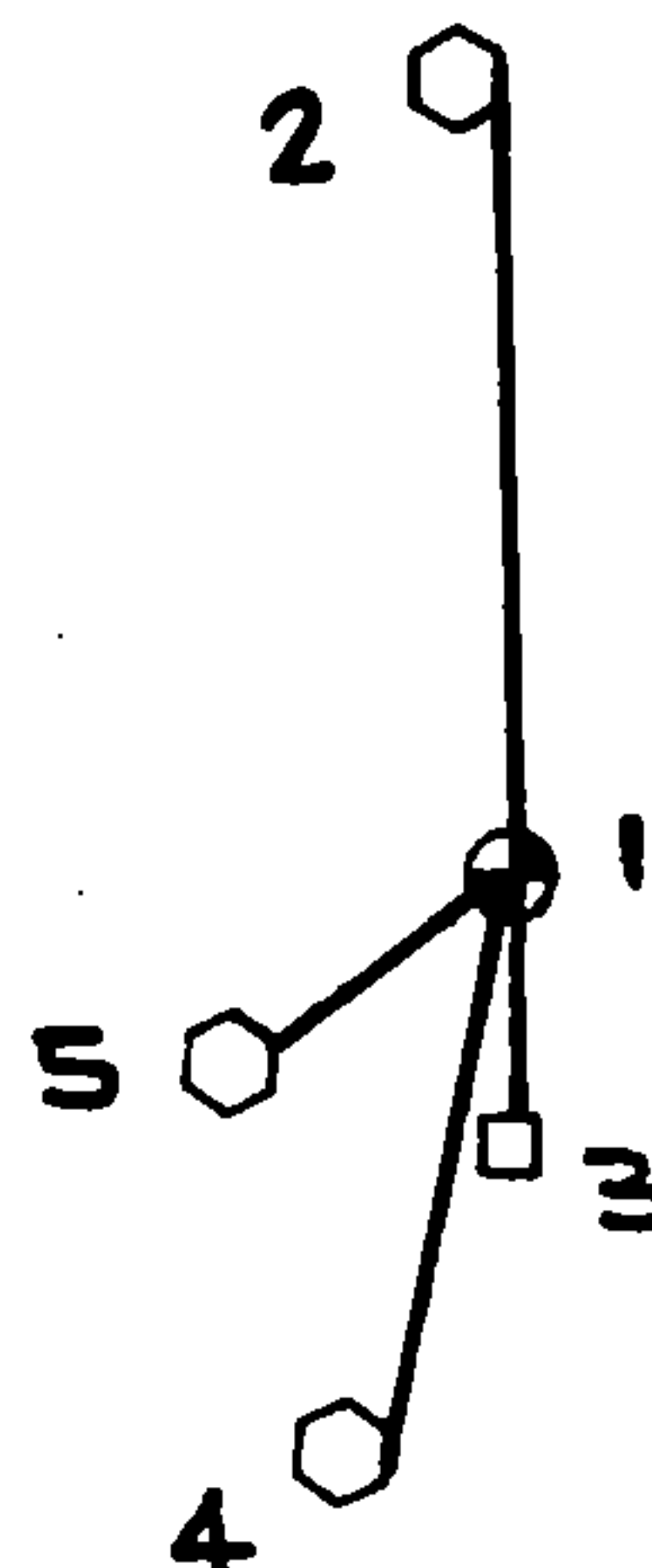
In 1981 Milo Stefan, RLS, 1558 - set corner at intersection of fence lines. Set a 2" x 30" aluminum monument. No bearing trees or reference objects were established.

On 2/24/95, John Garske, RLS, found Milo Stefan's monument and made the following references below.

- (c) In the plan view drawing below, provide reference ties to at least 4 witness monuments, or, if the location is within a municipality, to at least 2 witness monuments. (witness monuments shall be made of concrete, natural stone, iron or other equally durable material.)

- (d) Show a plan view drawing depicting the relevant monuments and reference ties which is sufficient in detail to enable accurate relocation of the corner monument if the corner monument is disturbed. Indicate north.

- 1- 2" x 36" aluminum monument with cap stamped to identify corner.
- 2- Fence post - North, 15.46 feet.
- 3- Steel sign post - South, 2.35 feet.
- 4- Fence post - S11°W, 7.20 feet.
- 5- Fence post - S55°W, 1.88 feet.



(e) Describe any material discrepancy between the location of the corner as restored or reestablished and the location of that corner as previously restored or reestablished by distance and direction. Show the discrepancy on the plan view drawing under (d), above. Show the distances between the corner as previously restored or reestablished and (1) the corner as restored or reestablished, and (2) to at least 2 of the witness monuments shown on the drawing in (d), above.

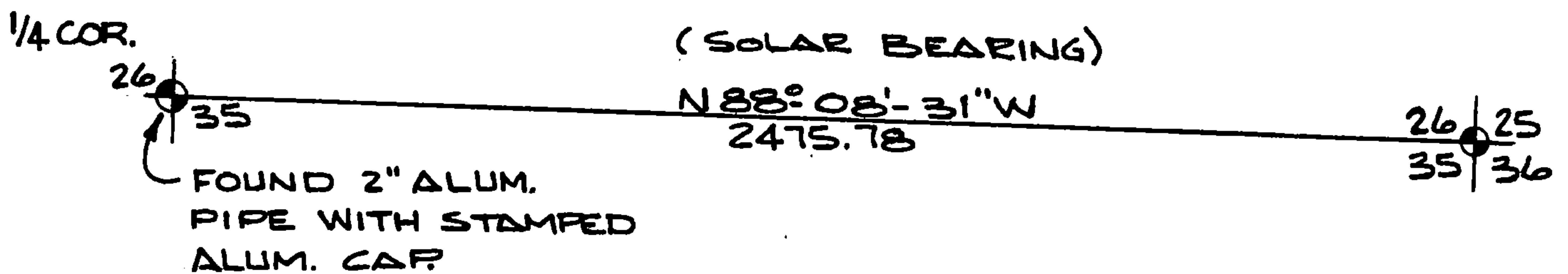
None

(f) Was the corner restored through acceptance of (1) an obliterated evidence location, or, (2) a found perpetuated location?

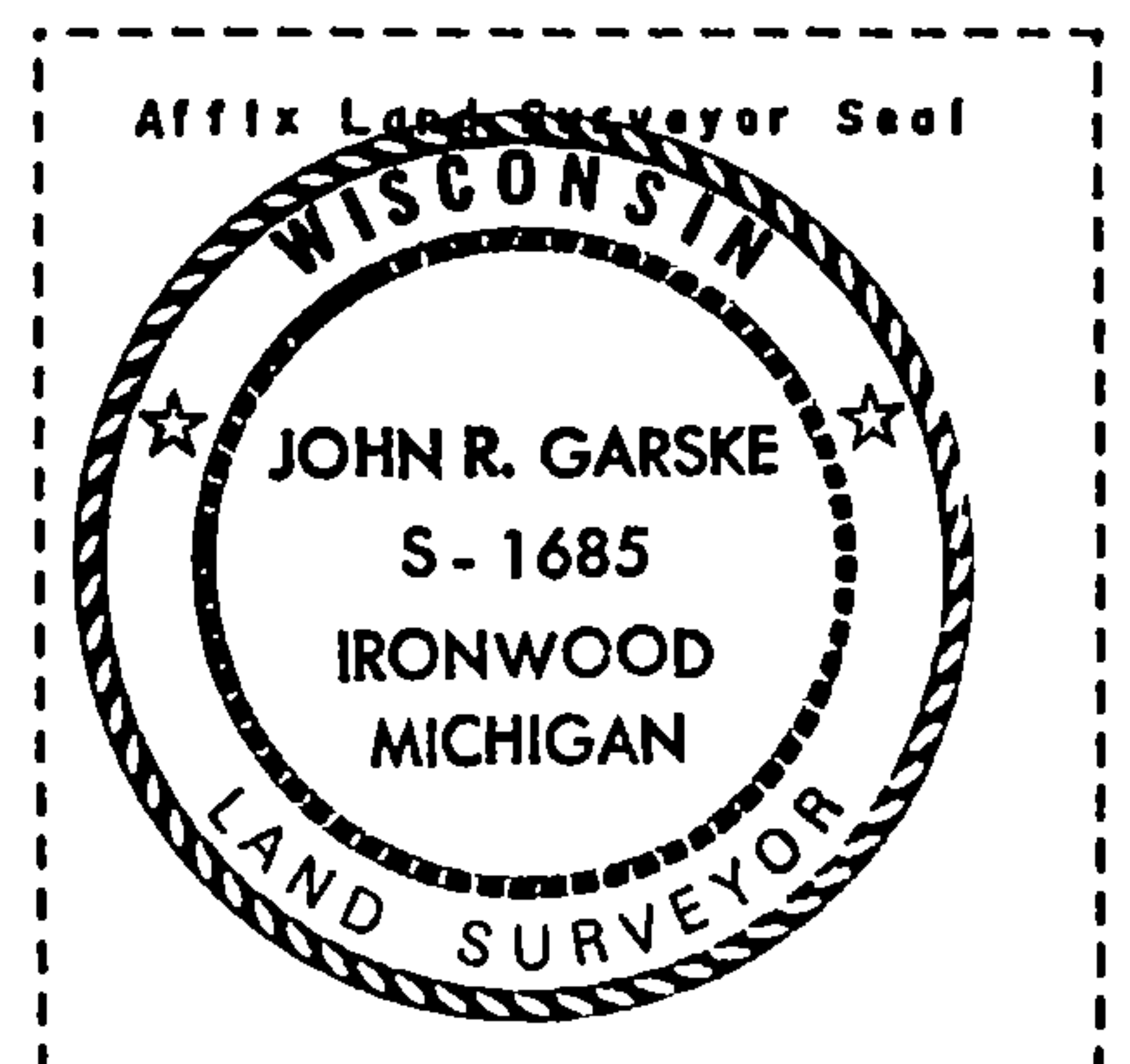
2.

(g & h) Was the corner reestablished through lost corner proportionate methods? If so, show the method, including the directions and distances to other public land survey corners used as evidence or used for proportioning in determining the corner location?

No



REGISTER'S OFFICE  
Forest County, Wis.  
Received for record this 10<sup>th</sup> day  
of May A.D. 19 95 at  
8:30 o'clock A.M. and recorded  
in Vol. Corner Restorations  
page 37-15-11-21  
Paul Chittie Deputy  
Register of Deeds



(1) I, John R. Garske, S-1685

(type or print name) certify that the corner location shown on this record was determined by me or under my direction and control and that this U.S. Public Land Survey Monument Record is correct and complete to the best of my knowledge and belief.

Signature

John R. Garske 4/25/95

Date

CERTIFICATE READY FOR FILING:

Tom Kucher  
District Ranger

CERTIFIED LAND CORNER RESTORATION

State of Wisconsin }  
County of Forest } ss.

I Milo E. Stefan, do hereby certify that on the 9th day of September, 1981, I found evidence of the Northwest corner of Section 36 Township 37 North, Range 15 East, Fourth Principal Meridian, as described hereon; and that from this evidence I established a new monument and accessories as described hereon to perpetuate the original location of this corner:

Description of original monument and accessories and subsequent restorations:

80.00 chains North, set section corner post  
20" Birch, S48E, 100 links  
18" Birch, N35E, 9 links

Description of corner evidence found:

Fence corner, with fences North, South and West.  
Position pointed out to me by Bud Hansen, who was born and raised on the NW $\frac{1}{4}$  NW $\frac{1}{4}$  Section 36 and whose family came to this area in 1904 and has been on said tract since.

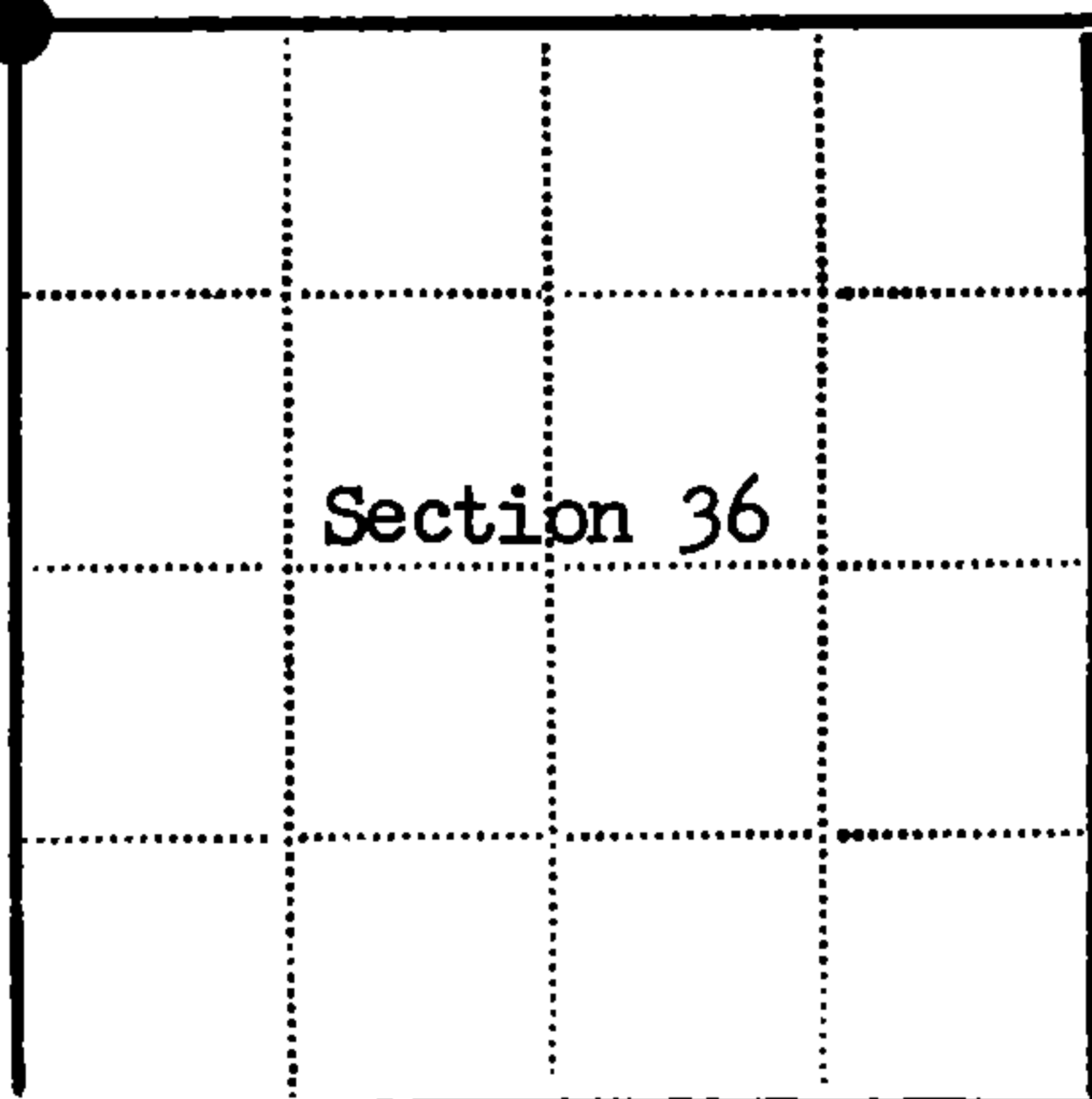
Description of monument and accessories I established to perpetuate the location of this corner:

Placed a 2" x 30" aluminum monument 24" in the ground, supported by a mound of stone at base of fence corner.

References:

Steel Sign Post, South, 2.4 feet  
No others established as fields and pasture all around for 400' - 500'

DOCUMENT NO.  
124209



● - Corner monument restored  
□ -

Resident witnesses.....

Dated at Laona Wisconsin, this 5th day of October 1981.

Signature Milo E. Stefan Title Land Surveyor  
(County Surveyor, Registered Land Surveyor, or other duly authorized official)

Surveyors Registration No. 1558

Office of Register of Deeds County of Forest

I hereby certify that the within instrument was filed in this office for record on the 13th day of September 1983, and was filed in Book No. Page No. of County Records.

Signature Eugene H. Staszewski Title Register of Deeds

Township 37 North, Range 15 East, Section 36, Index No. V-21, Page No.

4371520000

V21