

131941

FORM 985 H. C. MILLER CO., MILWAUKEE

State of Wisconsin }
County of Forest } ss.

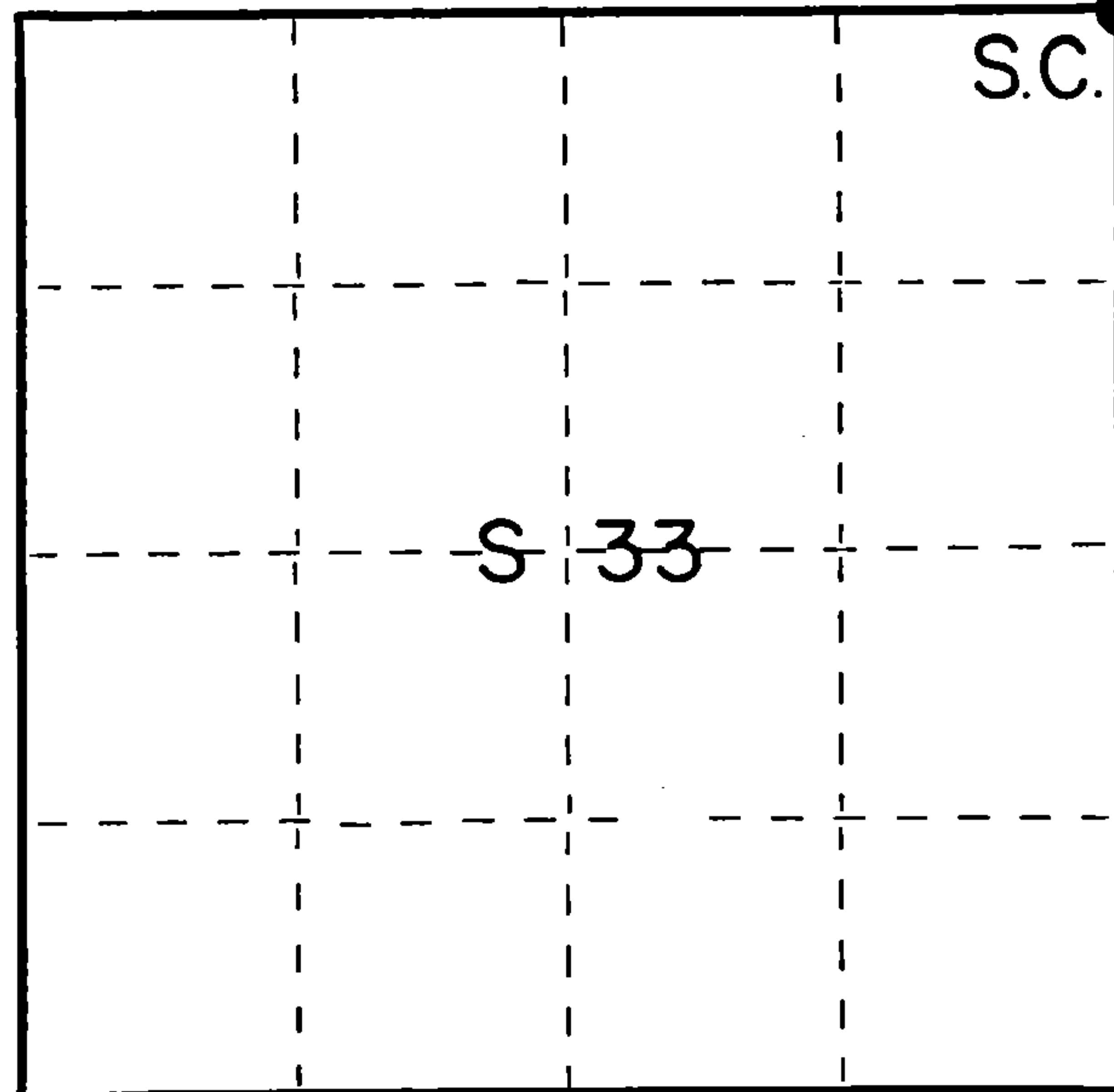
I Glen Barker, do hereby
certify that on the 18th day
of December, 1986, I found
evidence of the Section
corner of Secs. 27-28-33-34
Township 37, North, Range
15 East, Fourth Principal Meridian,
as described hereon; and that from this evidence
I established a new monument and accessories
as described hereon to perpetuate the original
location of this corner.

Resident witnesses:

N. Spiess

H. Wagoner

T. 37 N. R. 15 E.



○ = Corner monument restored.

CERTIFIED LAND CORNER RESTORATION

Index No. V-13

History of original corner establishment:

Original corner established by James L. Nowlin, government deputy surveyor, in
1865 from which Birch 12" bears N82E 100 links and Hemlock 20" S63W 73 links.

Description of corner evidence found:

Recovered bottom end of old cedar post and old squared stake beside post point. This
position falls on a very old fence line running north. All post and wire are down
covered with moss and the forest floor. At 16.0' intervals uncovered old post and
wire.

In 1908 N.H. Smith had a recorded distance of 5434.0' from NW sec. cor to NE section
corner of section 33.

I have a distance of 5438.43' on this line.

Description of monument and accessories I established to perpetuate the original location of this corner.

Replaced old post point with a 2-1/4" aluminum Forest County monument with 3/4"
alloy cap stamped;

Marked Bts:

Black Spruce 10" N10W 31.19'

Black Spruce 10" N51E 35.91'

White Birch 7" S84W 12.52'

A 12" white birch with face chopped into bears N59W 10.0'

T37N R15E

S28 S27

S33 S34

S1682-1986

Dated at Rhinelander, Wis., this 9th day of January, 1987.

Signature Glen Barker Title Registered Land Surveyor Registration No. S1682
(County Surveyor, Registered Land Surveyor, or other duly authorized official)

Office of Register of Deeds, County of Forest, I hereby certify that the within
instrument was filed in this office for record on the 19th day of January, 1987.
at 1:20 o'clock P. M.

Paul Aschenbrenner
(Register of Deeds)

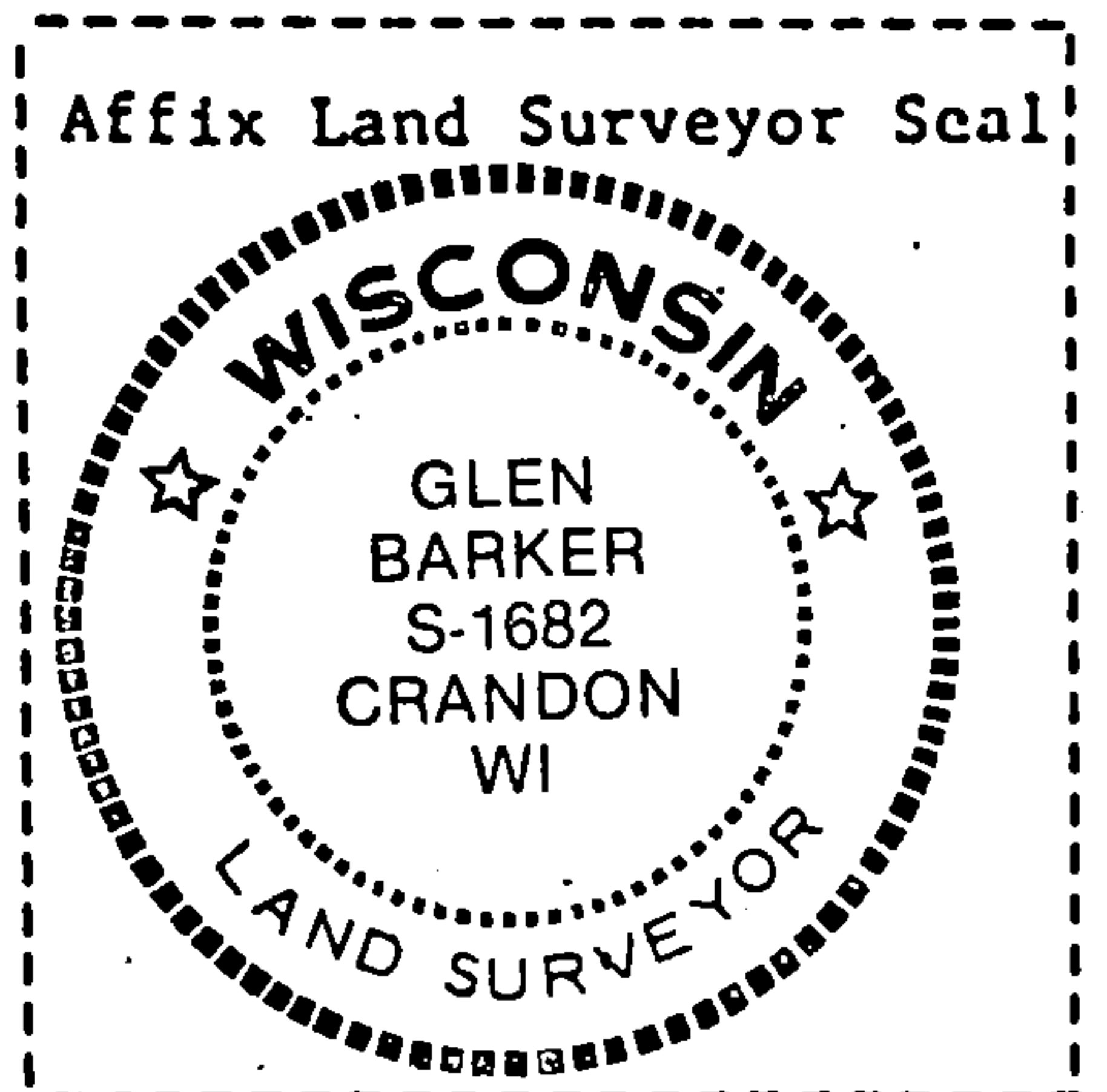
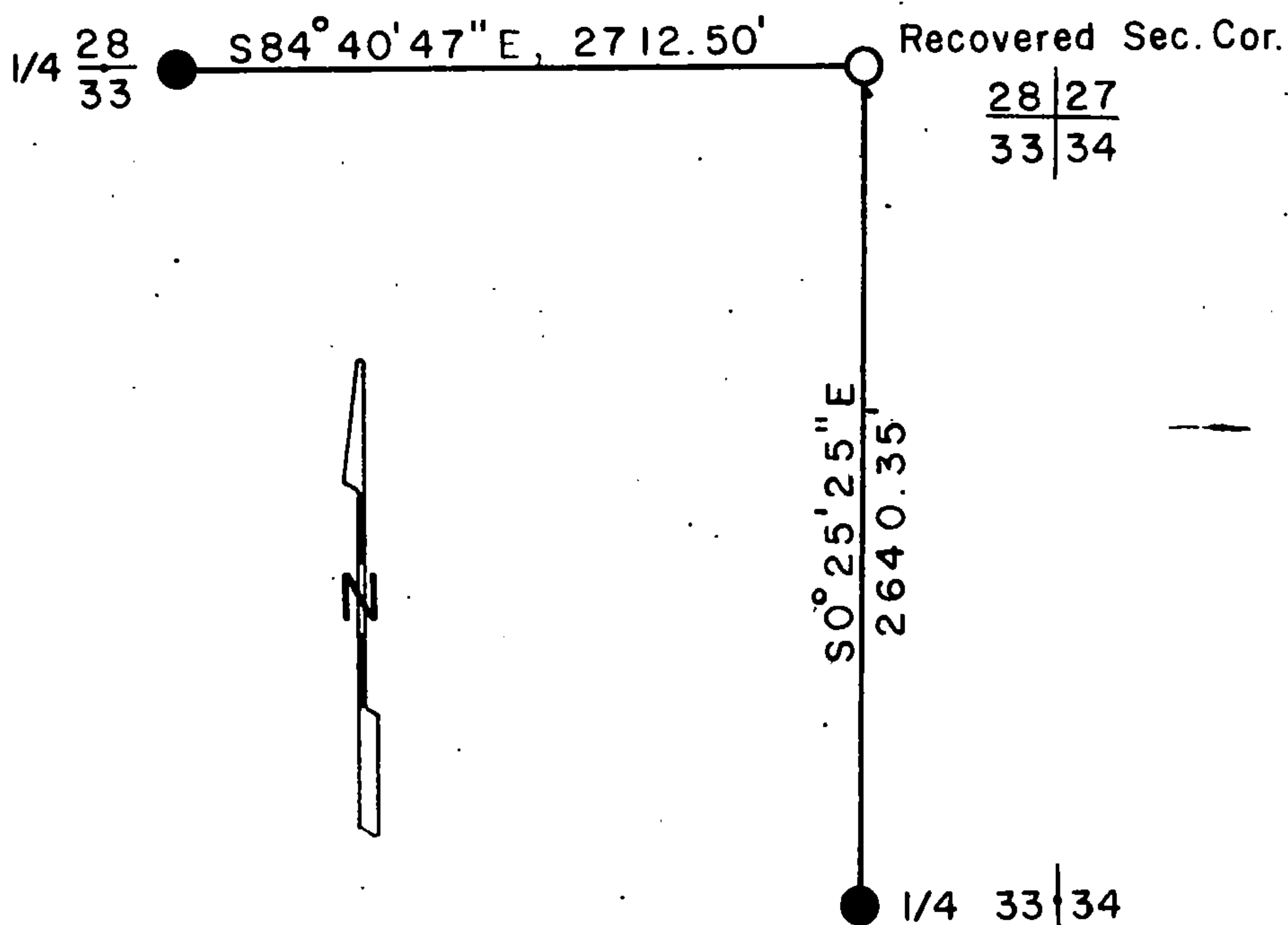
By Deputy

43715280000

(d) Describe any material discrepancy between the location of the corner as restored or reestablished and the location of that corner as previously restored or reestablished by distance and direction. Show the discrepancy on the plan view drawing under (d), above. Show the distances between the corner as previously restored or reestablished and (1) the corner as restored or reestablished, and (2) to at least 2 of the witness monuments shown on the drawing in (d), above.

(f) Was the corner restored through acceptance of (1) an obliterated evidence location, or, (2) a found perpetuated location?
perpetuated location

(g&h) Was the corner reestablished through lost corner proportionate methods? If so, show the method, including the directions and distances to other public land survey corners used as evidence or used for proportioning in determining the corner location?



(i) I, Glen Barker
(type or print name) certify that the corner location shown on this record was determined by me or under my direction and control and that this U.S. Public Land Survey Monument Record is correct and complete to the best of my knowledge and belief.

Signature

Date

Jan 8, 1987