

U S PUBLIC LAND SURVEY MONUMENT RECORD - ADDENDUM

NOTE: This form is intended and designed to fulfill all requirements of Wisconsin Administrative Code, Chapter A-E 7.08 U.S. Public Land Survey Monument Record (3) (a-i)

A-E 7.08(3)(a) Identity of corner
SOUTHEAST CORNER OF SECTION 29
TOWNSHIP 37 NORTH
RANGE 15 EAST OF THE 4TH PM
TOWN OF CASWELL,
COUNTY OF FOREST

WISCRS - FOREST COUNTY
N: 600,263.455 USft (XXX,XXX.XX)
E: 904,445.780 USft (XXX,XXX.XX)
Datum: NAD83 (2011)
GNSS Method RTN - Direct
GNSS Control WISCORS VRS



The coordinate value shown has been verified by the average of two or more GPS observations at a markedly different time. Values shown in parenthesis, are previously published measurements.

A-E 7.08(3)(b) Description of any record evidence, monument evidence, occupational evidence, testimonial evidence, or any other material evidence.

Original Surveyor: James L. Nowlin

Date of Original Survey Commenced: August 7, 1865
Completed: August 18, 1865

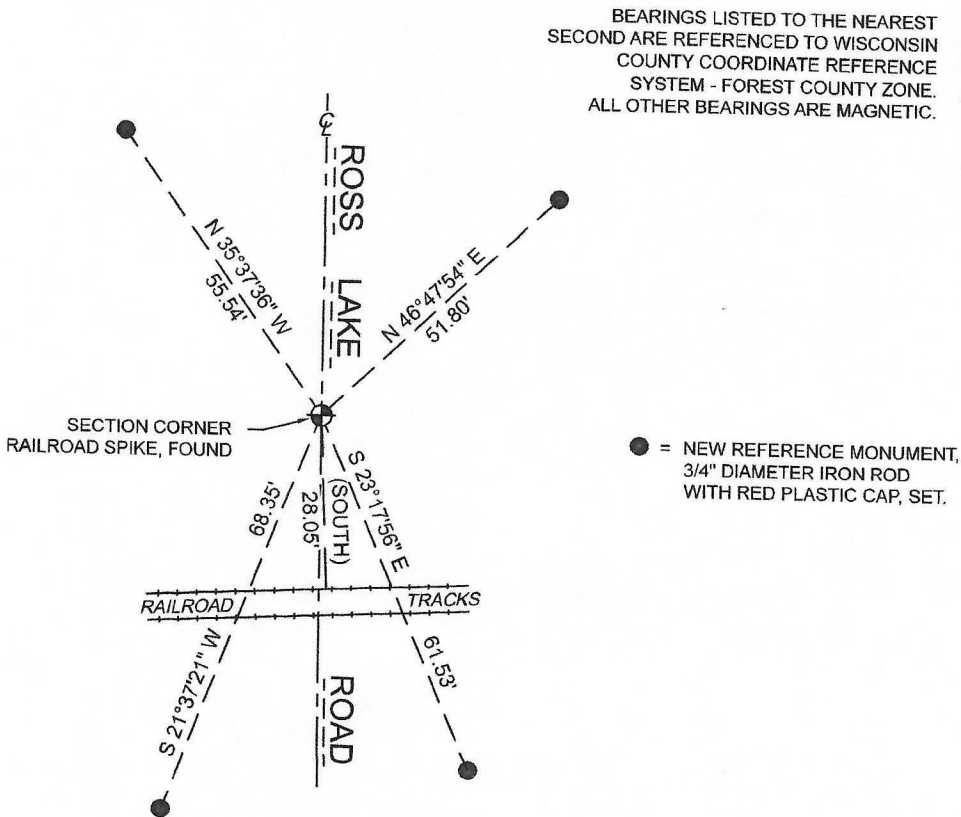
Original Accessories:
Aspen 12 N 21° W 75 lks
W. Pine 20 N 5° E 100 lks

See Previous Monument Record: Index No. V-9 - June 2, 1976 - Surveyor 887 - Thomas R. Arnott

1977 - Surveyor 802 - Jean Resvick - indicates this position as "marked by a railroad spike" on Record #371528-19770000.
1986 - Surveyor 1651 - Alan D. Harrison - indicates this position as "railroad spike" on Record #371532-19861203.
June, 1988 - Surveyor 1558 - Milo E. Stefan - indicates this position as "found marked by a railroad spike" on Record #371529-19890328.
September 20, 1988 - Surveyor 1682 - Glen Barker - indicates this position as "railroad spike found" on Record #371533-19880920.
March 30, 1991 - Surveyor 00973 - Wayne G. Dobbratz - indicates this position as "found a railroad spike" on Record #371532-1991100330.
December 11, 1991 - Surveyor 1394 - Norman A. Harrison - indicates this position as "existing railroad spike" on Record #371532-19911211.
May 19, 1996 - Surveyor 00973 - Wayne G. Dobbratz - indicates this position as "found a railroad spike" on Record #371532-19960519.
March 20, 2001 - Surveyor 2197 - Michael A. Trembl - indicates this position as "railroad spike found" on Record #371529-20010320.
June 16, 2009 - Surveyor 2197 - Michael A. Trembl - indicates this position as "existing monument of record (P.K. nail)" on Record #371529-20010320.
November 18, 2008 - Surveyor 2197 - Michael A. Trembl - indicates this position as "existing P.K. nail" on Record #371528-20081118.
November 2, 2017 - Surveyor 809-8 - Michael S. Hess - indicates this position as "railroad spike set from ties" on Record #371533-20180303.

A-E 7.08(3)(f) Whether the corner was restored through acceptance of an obliterated location or a found perpetuated location.
January 20, 2022 - I found railroad spike 28.05 feet north of the north railroad track and on the centerline of Ross Lake Road.
I did not find any other reference monuments recovered or established as noted on Certified Land Corner Restoration V-9.
I accept this monument as a FOUND PERPETUATED LOCATION OF THE CORNER and established 4 new witnesses as shown below.

A-E 7.08(3)(c)(d)(e)(h) Plan view of corner with references to at least 4 witness monuments. If in disagreement with previously established corner, show the distances between the two corners and also indicate the ties to the disputed. The directions and distances to other public land survey corners used as evidence or used for determining the corner location.



A-E 7.08(3)(i) I, Jeffrey L. DeMuth, Professional Land Surveyor No. S-2656, hereby certify that the corner location on this record was determined by me or under my direction and control and that this U.S. Public Land Survey Monument Record is correct and complete to the best of my knowledge, and belief

SIGNATURE

August 12, 2022

DATE



43715290000

CERTIFIED LAND CORNER RESTORATION

Index No. **V 9**

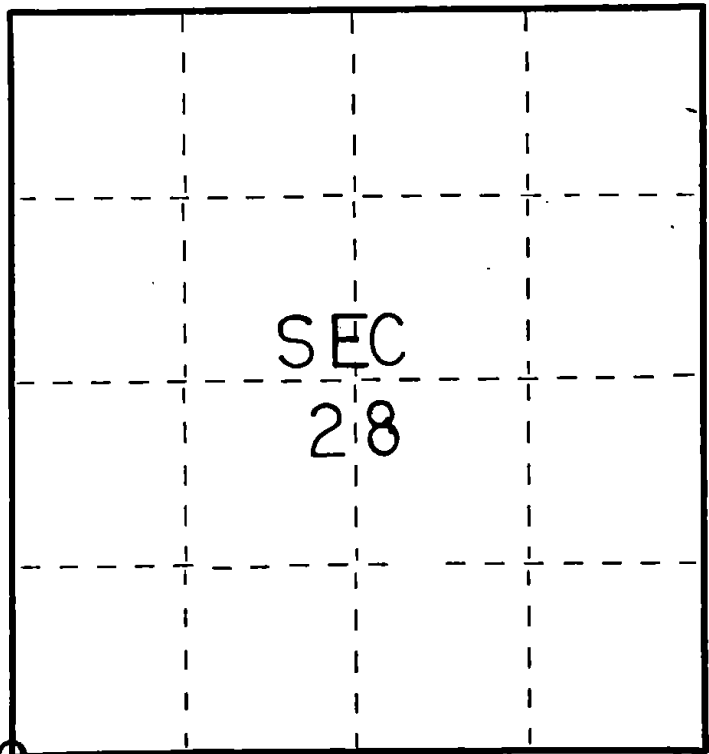
State of Wisconsin }
County of Forest } ss.

I Thomas R. Arnott, do hereby
certify that on the 2nd day
of June, 1976, I found
evidence of the section
corner of sections 28, 29, 32 & 33
Township 37, North, Range
15 E, Fourth Principal Meridian,
as described hereon; and that from this evidence
I established a new monument and accessories
as described hereon to perpetuate the original
location of this corner.

Resident witnesses:

Glenn Barker

Herbert Wagoner



○ = Corner monument restored.

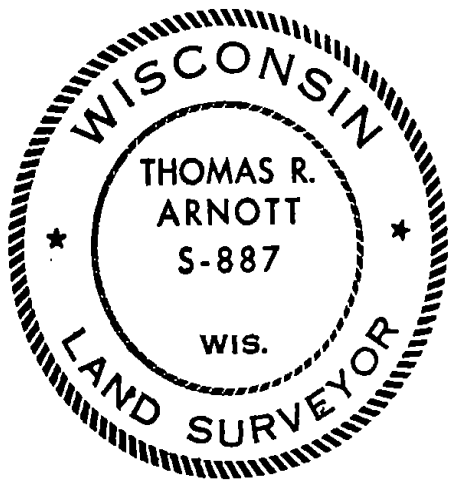
History of original corner establishment:

Original Subdivision by James Nowlin 7 Aug - 18 Aug, 1865

Aspen 12 N21W 75 Lks.
W. Pine 20 N5E 100 Lks.

Description of corner evidence found:

RR Spike found in center of road



Description of monument and accessories I established to perpetuate the original location of this corner.
Replaced rr spike with $1\frac{1}{4}$ " iron pipe

Ties:

North rail of Soo line tracks	South	28.05 feet
Telephone pole (1400)	N56W	35.40 feet
Forest County aluminum monument	N41E	45.51 feet

Dated at Crandon, Wis., this 11th day of June, 1976

Signature Thomas R. Arnott Title Surveyor Registration No. S-887
(County Surveyor, Registered Land Surveyor, or other duly authorized official)

Office of Register of Deeds, County of Forest, I hereby certify that the within
instrument was filed in this office for record on the 11th day of June, 1976
at 3 o'clock P. M.

EUGENE STATEZNY

(Register of Deeds)

Document Number **109436**

By Eileen Schmidt Deputy