

131940

Stock No. 26272

H.C. Miller Company

FORM 985

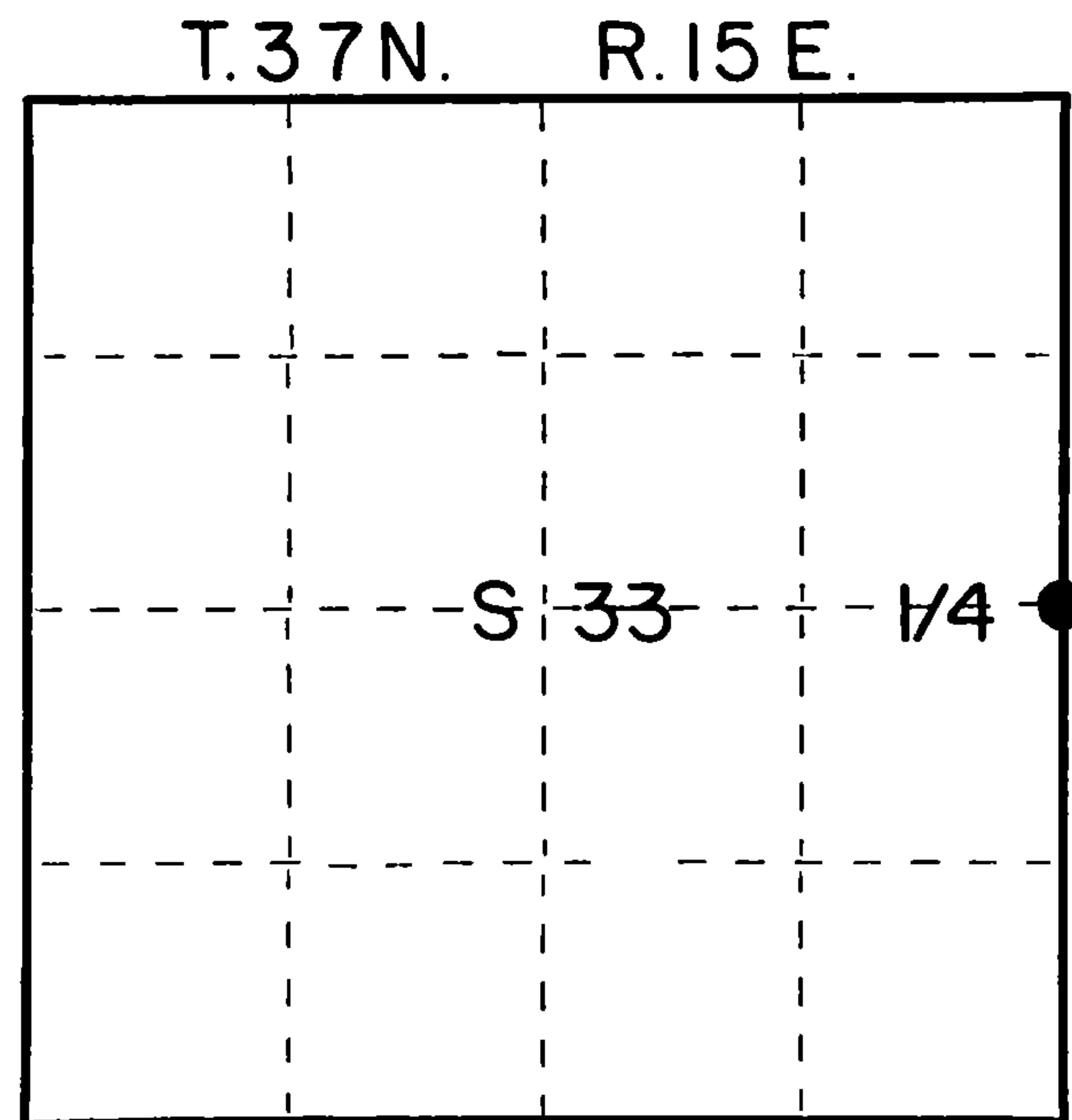
State of Wisconsin }
County of Forest } ss.

I Glen Barker, do hereby
certify that on the 19th day
of December, 1986, I found
~~re-established~~ the 1/4
corner of sections 33 & 34
Township 37, North, Range
15 East, Fourth Principal Meridian,
as described hereon; and that from this evidence
I established a new monument and accessories
as described hereon to perpetuate the original
location of this corner.

Resident witnesses:

N. Spiess

H. Wagoner



○ = Corner monument restored.

CERTIFIED LAND CORNER RESTORATION

Index No. X-13

History of original corner establishment:

Original corner established by James L. Nowlin, government deputy surveyor, in 1865,
from which a aspen bears N38W 21 links and aspen 7" S21E 32 links.

Description of corner evidence found:

Re-established 1/4 corner by proportionate measurement.

Total distance from section corner 3-4-33-34 T36&37N R15E to section corner 27-28-33-34
T37N R15E is 5280.71'.

Set 1/4 corner 2640.35' intermediate.

Description of monument and accessories I established to perpetuate the original location of this corner.

Set a 2-1/4" aluminum Forest County monument with 3-1/4" alloy cap, stamped:
Monument projects 3" above ground.

Marked BTs:

Cedar	12"	N18E	62.04'
Black Spruce	7"	N67E	55.08'
Black Spruce	10"	S74E	33.11'
White Birch	10"	S51W	26.05'

T37N R15E
1/4 S33 | S34

1986
S1682
Forest County

Dated at Rhinelander, Wis., this 12th day of January, 1987.

Signature Glen Barker Title Registered Land Surveyor Registration No. S1682
(County Surveyor, Registered Land Surveyor, or other duly authorized official)

Office of Register of Deeds, County of Forest, I hereby certify that the within
instrument was filed in this office for record on the 19th day of January, 1987
at 1:20 o'clock P. M.

Paul Aschenbrenner
(Register of Deeds)

By Deputy

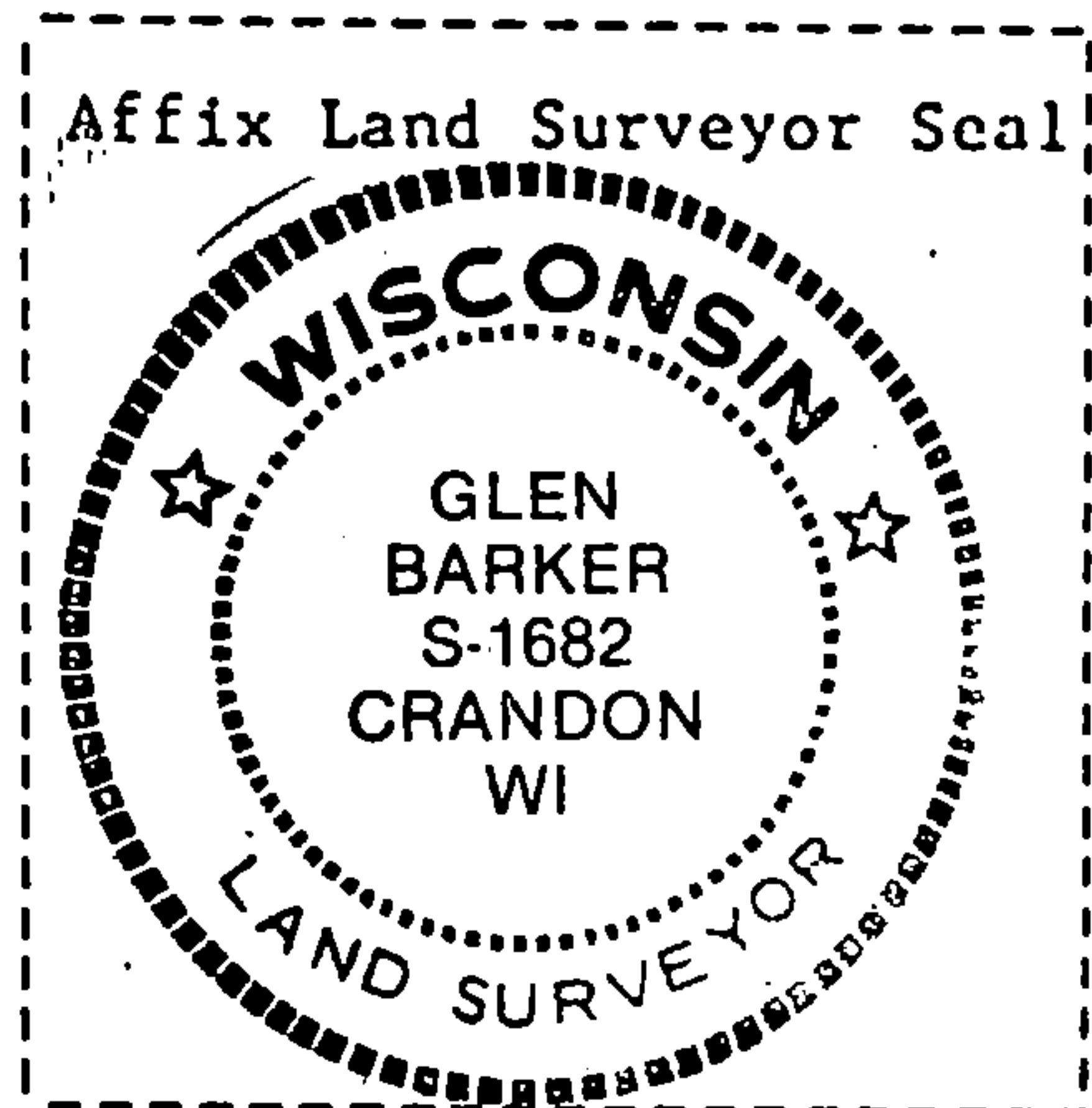
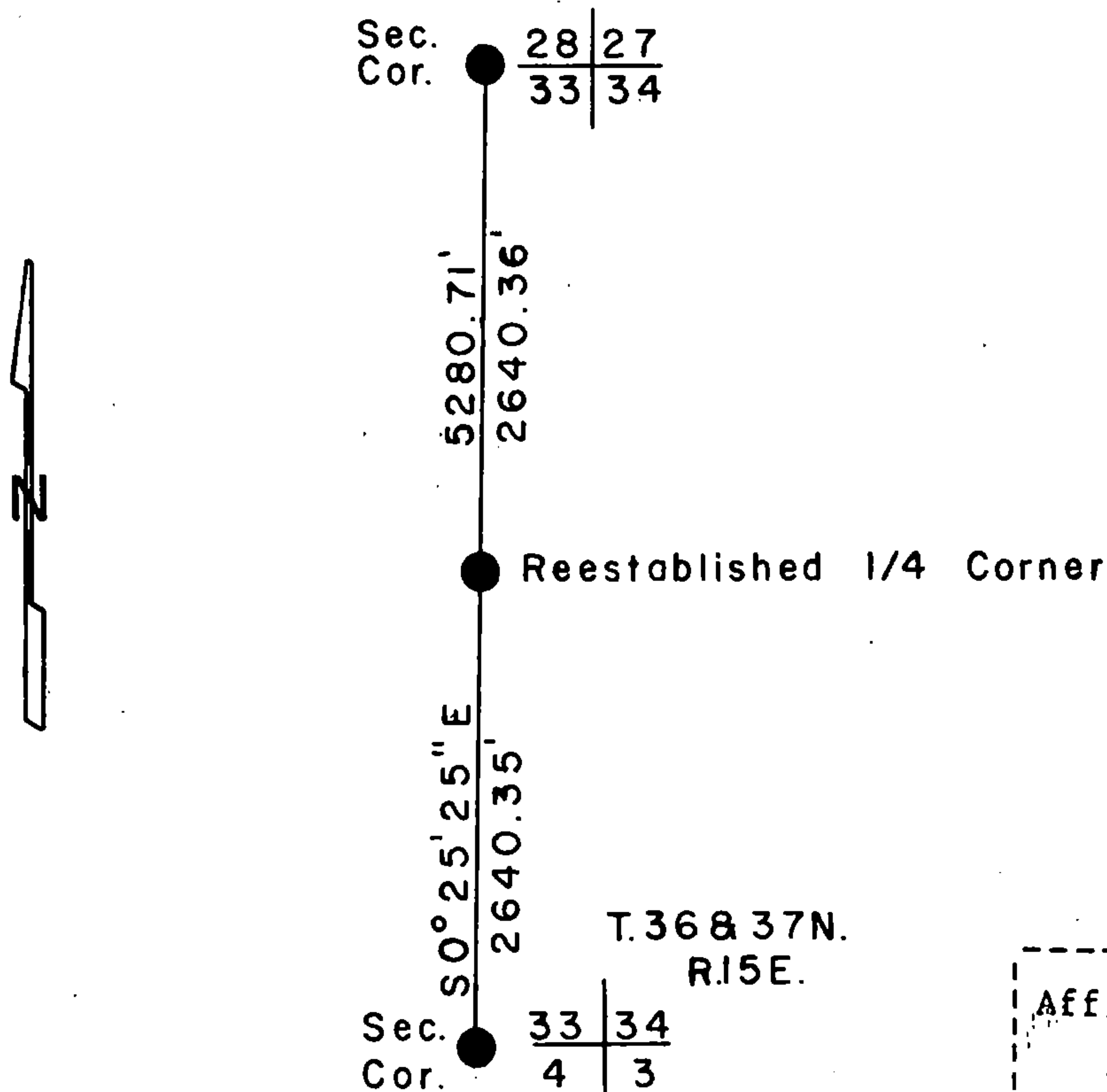
43715332000

(e) Describe any material discrepancy between the location of the corner as restored or reestablished and the location of that corner as previously restored or reestablished by distance and direction. Show the discrepancy on the plan view drawing under (d), above. Show the distances between the corner as previously restored or reestablished and (1) the corner as restored or reestablished, and (2) to at least 2 of the witness monuments shown on the drawing in (d), above.

(f) Was the corner restored through acceptance of (1) an obliterated evidence location, or, (2) a found perpetuated location?

(g&h) Was the corner reestablished through lost corner proportionate methods? If so, show the method, including the directions and distances to other public land survey corners used as evidence or used for proportioning in determining the corner location?

proportionate method



(i) I, Glen Barker
(type or print name) certify that the corner location shown on this record was determined by me or under my direction and control and that this U.S. Public Land Survey Monument Record is correct and complete to the best of my knowledge and belief.

Glen Barker Signature Jan 8, 1987 Date