

NOV 08 2023

CORTNEY BRITTEN CLEEREMAN
REGISTER OF DEEDS

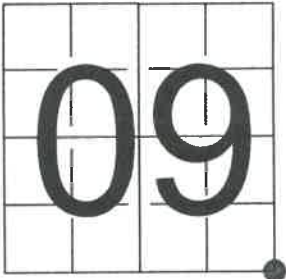
241593

U S PUBLIC LAND SURVEY MONUMENT RECORD ADDENDUM

NOTE: This form is intended and designed to fulfill all requirements of Wisconsin Administrative Code, Chapter A-E 7.08 U.S. Public Land Survey Monument Record (3) (a-i)

A-E 7.08(3)(a) Identity of corner:
SOUTHEAST CORNER SECTION 09,
TOWNSHIP 37 NORTH,
RANGE 16 EAST OF THE 4TH PM,
TOWN OF ARMSTRONG CREEK,
COUNTY OF FOREST

WISCORS - FOREST COUNTY
N: 615,573.492 USft (XXX,XXX.XXX)
E: 942,332.346 USft (XXX,XXX.XXX)
Datum: NAD83 (2011)
GNSS Method RTK
GNSS Control WISCORS VRS



The coordinate value shown has been verified by the average of two or more GPS observations at a markedly different time. Coordinates shown in parenthesis are previously published values.

A-E 7.08(3)(b)

Original Surveyor: James McBride

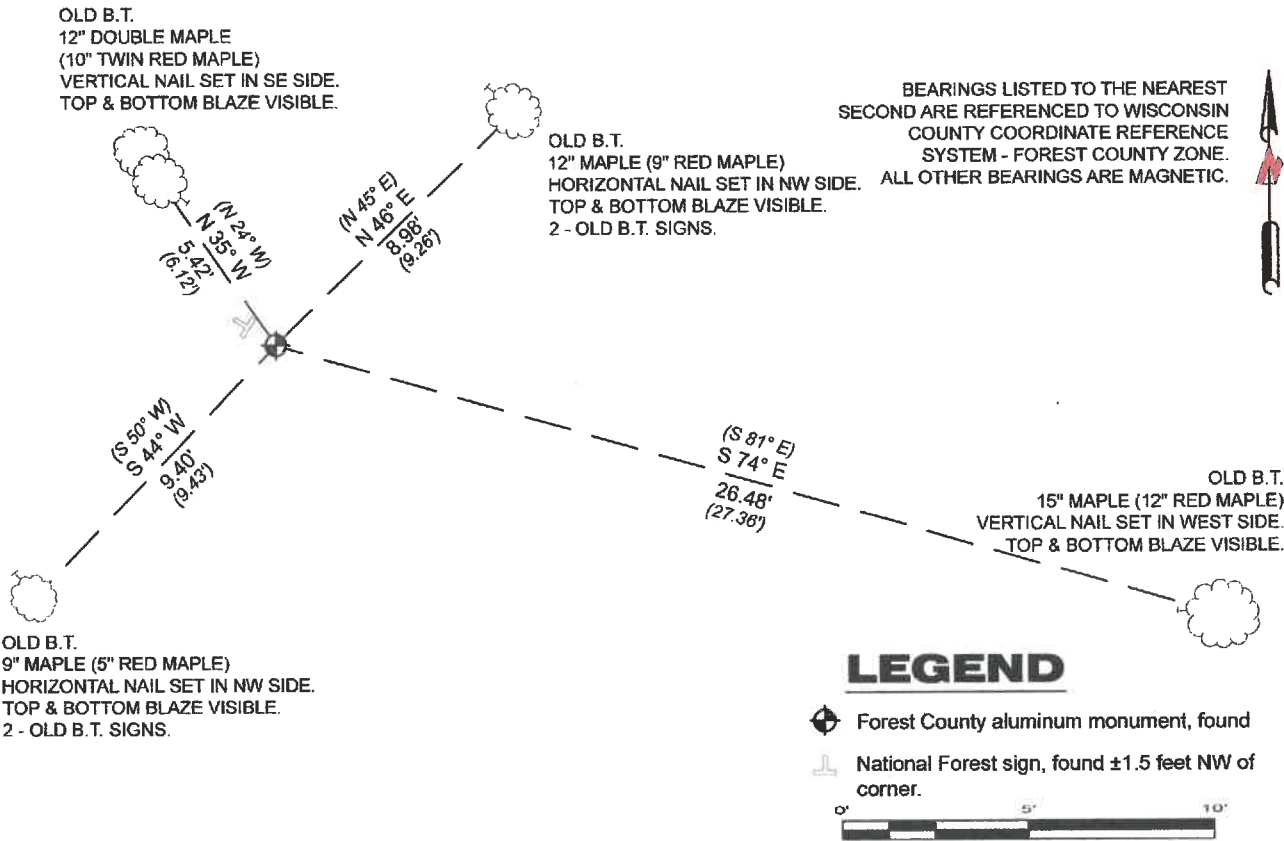
Date of Original Survey Commenced: July 11, 1859
 Completed: July 16, 1859

Original Accessories:
Hemlock 20 N 32° W 33 Links
Hemlock 20 N 52° E 51 Links
Hemlock 24 S 14° E 20 Links
Sugar 12 S 58° W 16 Links

See previous U.S. Public Land Survey Monument Record - J-13 - October 23, 1990 - Surveyor 1665 - John C. Schulke - THENCE:

June 22, 2023 - I found a Forest County aluminum pipe monument with a 3.25 aluminum cap. I also found all of Schulke's bearing trees alive and in good condition.
I established set galvanized nails in the 4 existing bearing trees as shown below.

A-E 7.08(3)(c)(d) Plan view of corner with references to at least 4 witness monuments.



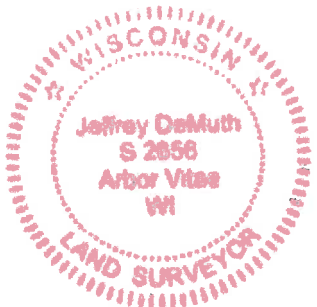
A-E 7.08(3)(e) 1859 Surveyor set a post, 1990 Surveyor found a 2" dia. alum. monument. I found a Forest County aluminum pipe monument with a 3.25" diameter aluminum cap.

A-E 7.08(3)(f) I accept this monument as a FOUND PERPETUATED LOCATION of the corner.
A-E 7.08(3)(g)(h) This corner was not determined through lost-corner-proportionate methods.

A-E 7.08(3)(i) I, Jeffrey L. DeMuth, Professional Land Surveyor No. S-2656, hereby certify that the corner location on this record was determined by me or under my direction and control, and that this U.S. Public Land Survey Monument Record is correct and complete to the best of my knowledge, and belief.

SIGNATURE

August 18, 2023
DATE



43716090000

J 13

U. S. PUBLIC LAND SURVEY MONUMENT RECORD

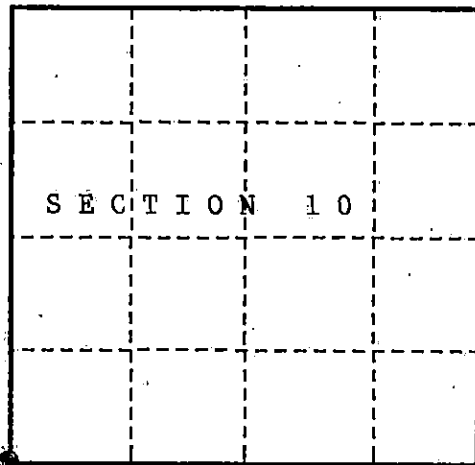
INSTRUCTIONS:

This record shall show the location of the corner and shall include all of the following nine elements (a through i).

- (a) Identify the corner by reference to the U.S. public land survey system.

○ = Corner monument restored.

Section Corner Common to Sections 9, 10, 15 and 16,
Township 37 North, Range 16 East,
Forest County, State of Wisconsin.



- (b) Describe any record evidence, monument evidence, occupational evidence, testimonial evidence or any other material evidence you considered, and whether the monument was found or placed.

In 1859, James McBride set a wooden post at the corner and selected the following bearing trees:

Hemlock	20"	N32°W	33 lks.	Hemlock	20"	N52°E	51 lks.
Hemlock	24"	S14°E	20 lks.	Sugar Maple	12"	S58°W	16 lks.

In 1954, F. R. Wincentzen set an iron pipe with brass cap stamped to identify the corner. Selected the following bearing trees:

Oak	14"	N30°	31.4 lks.
White Birch	12"	S20°W	42.7 lks.

In 1974, Milo Stefan recovered wooden post and the following corner references:
20" Red Oak, 14" White Birch, 24" Hemlock stump (original bearing tree) in Section 15 and Fallen 16" Sugar Maple bearing N56°W of the post. No sign of a brass cap monument.

In 1982, Kim Pritzlaff restored the corner and set a 2" dia. driveable alum Bernstein monument stamped to identify the corner. The following corner references:

Maple	8"	N44°E	9.23 ft.	Maple	7"	N25°W	6.08 ft.
Maple	10"	N86°E	27.34 ft.	Balsam	8"	S22°W	50.20 ft.
SSP	North	1.0 ft.					

The Plat is filed in the Forest County Clerk's Office in Crandon, Wisconsin.

In 1990, John Schulke recovered monument in place and the following corner references:

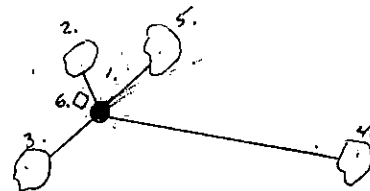
Twin Red Maple	10"	N24°W	6.12 ft.	Red Maple	9"	N45°E	9.26 ft.
Dead Balsam	8"	S29°W	50.18 ft.	Red Maple	12"	S81°E	27.36 ft.
SSP	NW	1.4 ft.					

The following new corner references: Sugar Maple 5" S50°W 9.43 ft.

- (c) In the plan view drawing below, provide reference ties to at least 4 witness monuments, or, if the location is within a municipality, to at least 2 witness monuments. (witness monuments shall be made of concrete, natural stone, iron or other equally durable material.)

- (d) Show a plan view drawing depicting the relevant monuments and reference ties which is sufficient in detail to enable accurate relocation of the corner monument if the corner monument is disturbed. Indicate north.

- 2" dia. driveable alum. monument stamped to identify the corner.
- Twin Red Maple 10" N24°W 6.12 ft.
- Sugar Maple 5" S50°W 9.43 ft.
- Red Maple 12" S81°E 27.36 ft.
- Red Maple 9" N45°E 9.26 ft.
- Steel sign post Northwest 1.4 ft.



REGISTER'S OFFICE }
Forest County, Wis. }

Received for record this 19th day
of December A.D., 1990 at
2:45 o'clock A.M. and recorded
in Vol. Corner Restorations
page 1-13

Register of Deeds

43716090000

(e) Describe any material discrepancy between the location of the corner as restored or reestablished and the location of that corner as previously restored or reestablished by distance and direction. Show the discrepancy on the plan view drawing under (d). above. Show the distances between the corner as previously restored or reestablished and (1) the corner as restored or reestablished, and (2) to at least 2 of the witness monuments shown on the drawing in (d). above.

NONE;

(f) Was the corner restored through acceptance of (1) an obliterated evidence location, or, (2) a found perpetuated location?

(2) found perpetuated location.

(g & h) Was the corner reestablished through lost corner proportionate methods? If so, show the method, including the directions and distances to other public land survey corners used as evidence or used for proportioning in determining the corner location?

No.

(1) I, John Schulke (Register Land Surveyor)

(type or print name) certify that the corner location shown on this record was determined by me or under my direction and control and that this U.S. Public Land Survey Monument Record is correct and complete to the best of my knowledge and belief.

John Schulke
Signature

10/23/90
Date

CERTIFICATE READY FOR FILING:

Dale B. Stagg
District Ranger

