

241595

NOV 08 2023

CORTNEY BRITTEN CLEEREMAN  
REGISTER OF DEEDS

U S PUBLIC LAND SURVEY MONUMENT RECORD

NOTE: This form is intended and designed to fulfill all requirements of Wisconsin Administrative Code, Chapter A-E 7.08 U.S. Public Land Survey Monument Record (3) (a-i)

A-E 7.08(3)(a) Identity of corner:  
SOUTHEAST CORNER SECTION 16,  
TOWNSHIP 37 NORTH,  
RANGE 16 EAST OF THE 4TH PM,  
TOWN OF ARMSTRONG CREEK,  
COUNTY OF FOREST

WISCORS - FOREST COUNTY  
N: 610,266.457 USft (XXX,XXX.XXX)  
E: 942,322.626 USft (XXX,XXX.XXX)  
Datum: NAD83 (2011)  
GNSS Method RTK  
GNSS Control WISCORS VRS



The coordinate value shown has been verified by the average of two or more GPS observations at a markedly different time. Coordinates shown in parenthesis are previously published values.

A-E 7.08(3)(b)

Original Surveyor: James McBride

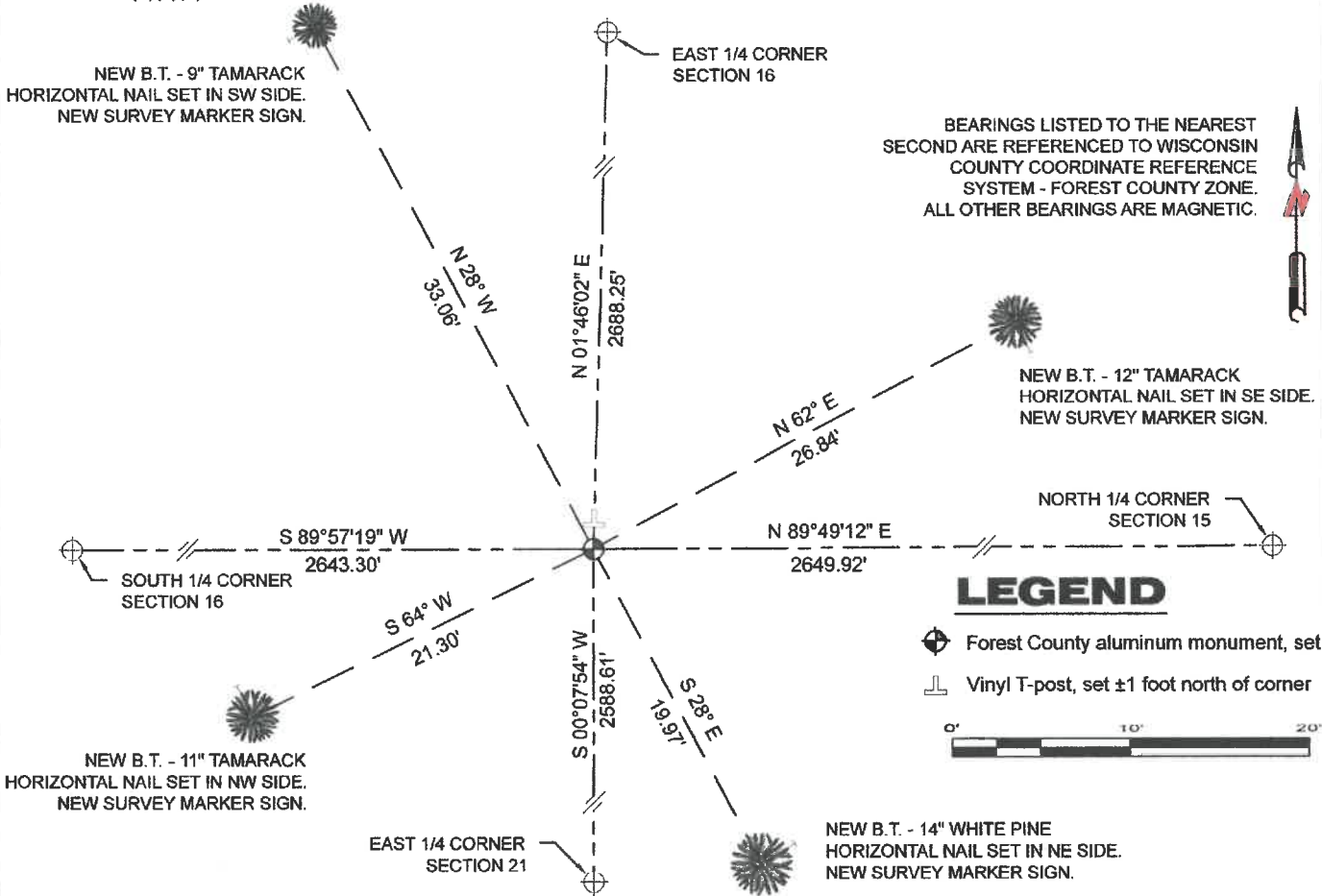
Date of Original Survey    Commenced:    July 11, 1859  
   Completed:    July 16, 1859

Original Accessories:  
Tamarac    14    N 71° W    18 Links  
Tamarac    14    N 74° E    57 Links  
Tamarac    12    S 54° E    30 Links  
Tamarac    10    S 56° W    45 Links

THENCE:

July 7, 2023 - I made a careful search of the area and found no evidence of original corner or occupation.  
I calculated the corner position using the intersection of an old east-west fence line that is located along the south line of the SE 1/4 of the SW 1/4 Section 15, and an old north-south fence line that is located along the west line of the SE 1/4 of the SW 1/4 Section 15. I held the fence intersection as the West 1/16th corner, and doubled the distance from the fence intersection to the South 1/4 corner of section 15, westerly to establish the corner position.  
I set a Forest County aluminum monument, being 2.4" diameter X 30" long and having a 3.2" diameter aluminum cap affixed to the top.  
I established 4 new reference monuments as shown below.

A-E 7.08(3)(c)(d) Plan view of corner with references to at least 4 witness monuments.



A-E 7.08(3)(e) 1859 Surveyor set a post. I set a Forest County aluminum monument.

A-E 7.08(3)(f) I restored the corner through ACCEPTANCE OF AN OBLITERATED LOCATION.

A-E 7.08(3)(g)(h) This corner was not determined through lost-corner-proportionate methods.

A-E 7.08(3)(i) I, Jeffrey L. DeMuth, Professional Land Surveyor No. S-2656, hereby certify that the corner location on this record was determined by me or under my direction and control, and that this U.S. Public Land Survey Monument Record is correct and complete to the best of my knowledge, and belief.

SIGNATURE

August 23, 2023

DATE



4371616000

N 13