

241596

NOV 08 2023

CORTNEY BRITTEN CLEEREMAN
REGISTER OF DEEDS

U S PUBLIC LAND SURVEY MONUMENT RECORD

NOTE: This form is intended and designed to fulfill all requirements of Wisconsin Administrative Code, Chapter A-E 7.08 U.S. Public Land Survey Monument Record (3) (a-i)

A-E 7.08(3)(a) Identity of corner:
SOUTH 1/4 CORNER SECTION 16,
TOWNSHIP 37 NORTH,
RANGE 16 EAST OF THE 4TH PM,
TOWN OF ARMSTRONG CREEK,
COUNTY OF FOREST

WISCRS - FOREST COUNTY
N: 610,264.390 USft (XXX,XXX.XXX)
E: 939,679.327 USft (XXX,XXX.XXX)
Datum: NAD83 (2011)
GNSS Method RTK
GNSS Control WISCRS VRS



The coordinate value shown has been verified by the average of two or more GPS observations at a markedly different time. Coordinates shown in parenthesis are previously published values.

A-E 7.08(3)(b)

Original Surveyor: James McBride

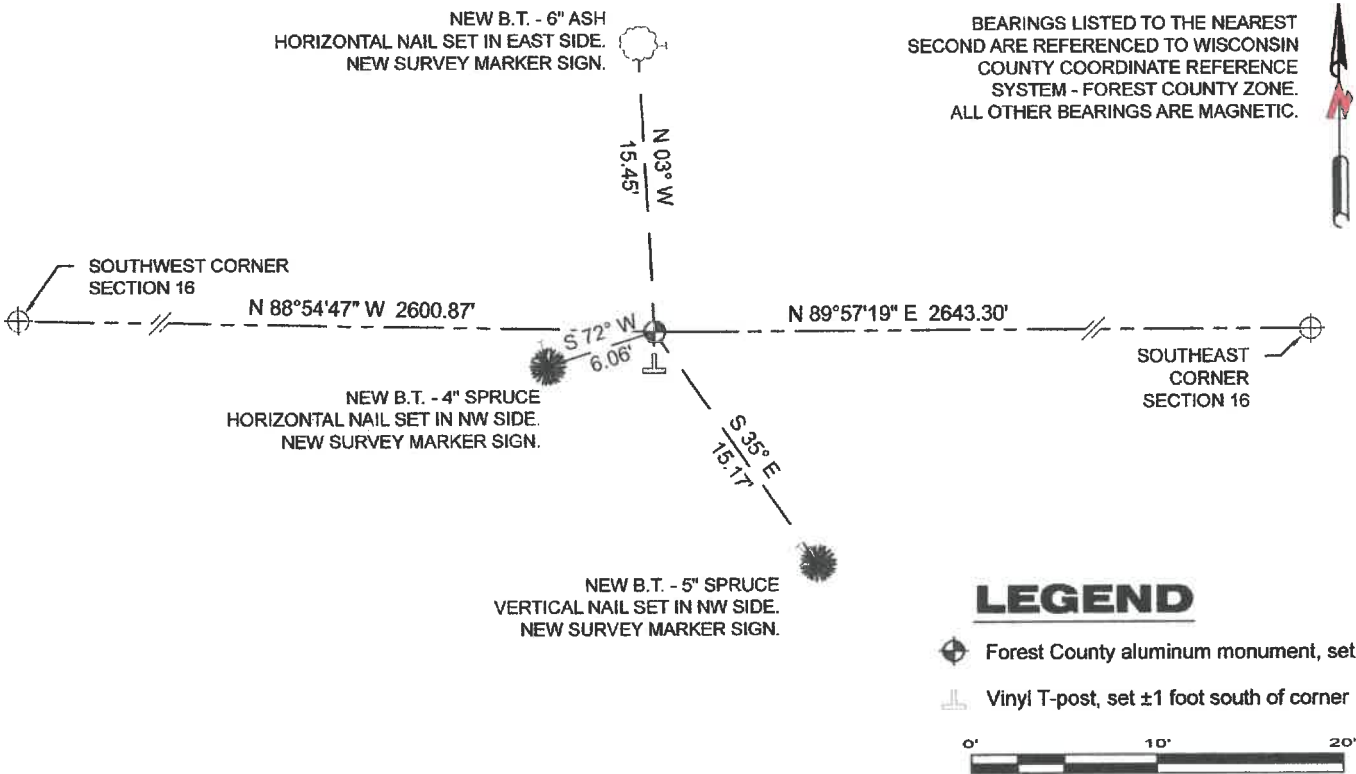
Date of Original Survey Commenced: July 11, 1859
 Completed: July 16, 1859

Original Accessories:
Tamarac 14 N 15° W 5 Links
Tamarac 12 S 77° W 77 Links

THENCE:

July 7, 2023 - I made a careful search of the area and found no evidence of original corner or occupation. I calculated the corner position using the original government survey notes, and a called for distance from a "stream 15 links wide runs SE", and set the corner 135.3 feet (2.05 chains) west of the stream. I set a Forest County aluminum monument, being 2.4" diameter X 30" long and having a 3.2" diameter aluminum cap affixed to the top. I established 3 new reference monuments as shown below.

A-E 7.08(3)(c)(d) Plan view of corner with references to at least 4 witness monuments. NO OTHER SUITABLE TREES NEARBY.



A-E 7.08(3)(e) 1859 Surveyor set a post 2.05 chains west of a stream that runs southeast. I set a Forest County aluminum monument 135.3 feet west of a stream that runs southeast.

A-E 7.08(3)(f) I restored the corner through ACCEPTANCE OF AN OBLITERATED LOCATION.
A-E 7.08(3)(g)(h) This corner was not determined through lost-corner-proportionate methods.

A-E 7.08(3)(i) I, Jeffrey L. DeMuth, Professional Land Surveyor No. S-2656, hereby certify that the corner location on this record was determined by me or under my direction and control, and that this U.S. Public Land Survey Monument Record is correct and complete to the best of my knowledge, and belief.

SIGNATURE  DATE August 23, 2023



43716160020

N 11