

NOV 08 2023

241582

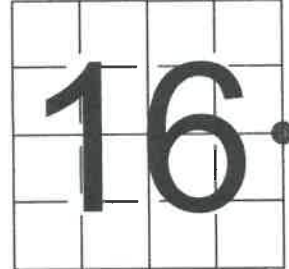
CORTNEY BRITTEN CLEEREMAN  
REGISTER OF DEEDS

## U S PUBLIC LAND SURVEY MONUMENT RECORD

NOTE: This form is intended and designed to fulfill all requirements of Wisconsin Administrative Code, Chapter A-E 7.08 U.S. Public Land Survey Monument Record (3) (a-i)

A-E 7.08(3)(a) Identity of corner:  
EAST 1/4 CORNER SECTION 16,  
TOWNSHIP 37 NORTH,  
RANGE 16 EAST OF THE 4TH PM,  
TOWN OF ARMSTRONG CREEK,  
COUNTY OF FOREST

WISCRS - FOREST COUNTY  
N: 612,953.430 USft (XXX,XXX.XXX)  
E: 942,405.527 USft (XXX,XXX.XXX)  
Datum: NAD83 (2011)  
GNSS Method RTK  
GNSS Control WISCORS VRS



The coordinate value shown has been verified by the average of two or more GPS observations at a markedly different time. Coordinates shown in parenthesis are previously published values.

A-E 7.08(3)(b)

Original Surveyor: James McBride

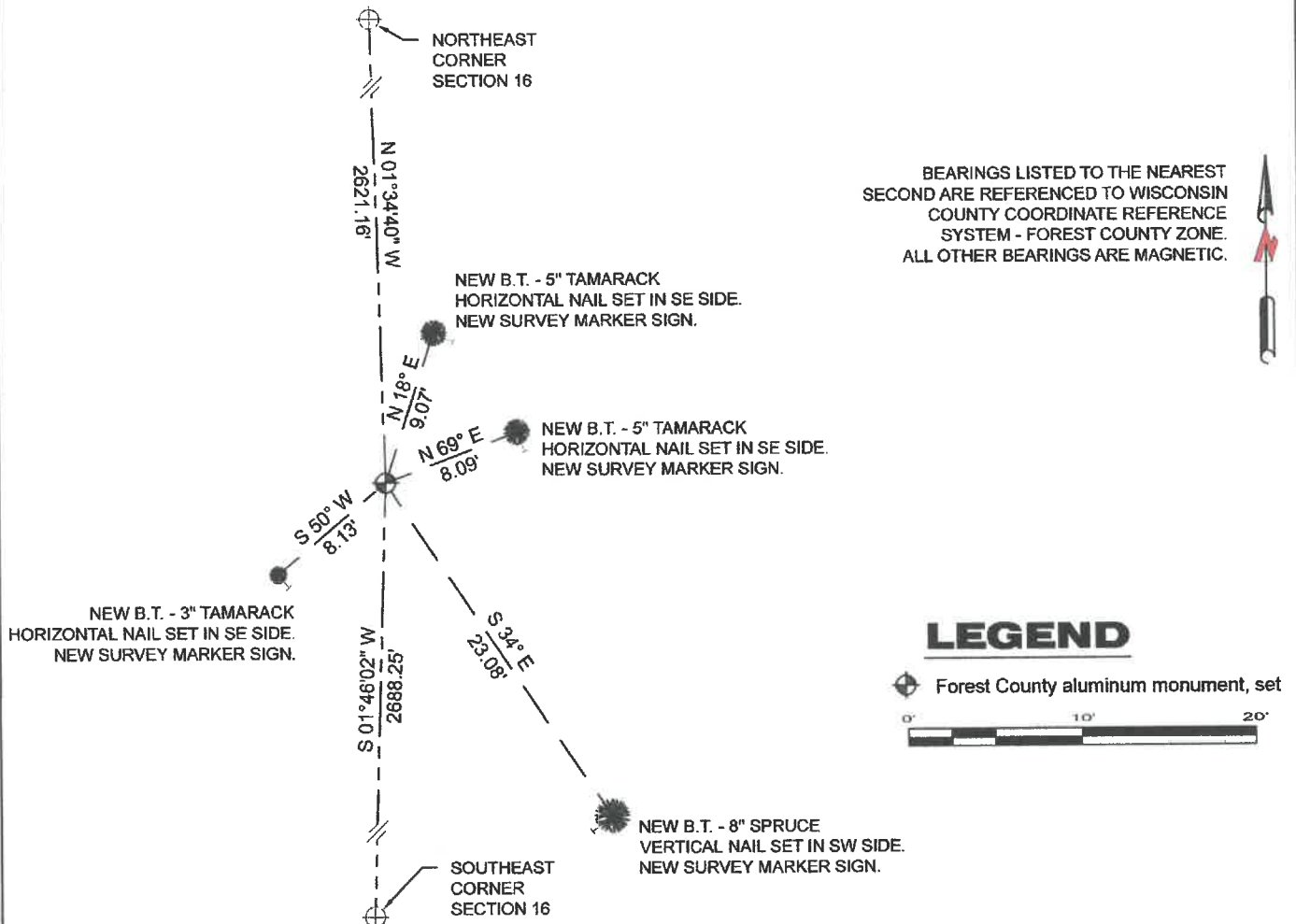
Date of Original Survey Commenced: July 11, 1859  
Completed: July 16, 1859

Original Accessories:  
W. Pine 8 S 34° W 15 Links  
Spruce 10 N 47° E 13 Links

THENCE:

July 7, 2023 - I made a careful search of the area and found no evidence of original corner or occupation. I calculated the corner position using the original government survey notes, and a called for distance from a "stream 10 links wide runs east", and set the corner 231 feet (3.5 chains) south of the stream.  
I set a Forest County aluminum monument, being 2.4" diameter X 30" long and having a 3.2" diameter aluminum cap affixed to the top.  
I established 4 new reference monuments as shown below.

A-E 7.08(3)(c)(d) Plan view of corner with references to at least 4 witness monuments.



A-E 7.08(3)(e) 1859 Surveyor set a post 3.5 chains south of a stream that runs east. I set a Forest County aluminum monument 231 feet south of a stream that runs east.

A-E 7.08(3)(f) I restored the corner through ACCEPTANCE OF AN OBLITERATED LOCATION.

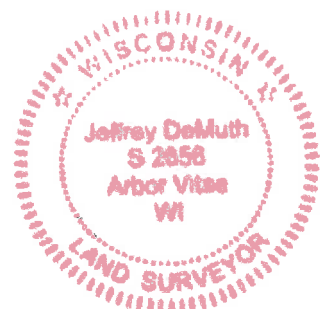
A-E 7.08(3)(g)(h) This corner was not determined through lost-corner-proportionate methods.

A-E 7.08(3)(i) I, Jeffrey L. DeMuth, Professional Land Surveyor No. S-2656, hereby certify that the corner location on this record was determined by me or under my direction and control, and that this U.S. Public Land Survey Monument Record is correct and complete to the best of my knowledge, and belief.

SIGNATURE

August 23, 2023

DATE



43716162000

L 13