

# U.S. PUBLIC LAND SURVEY MONUMENT RECORD

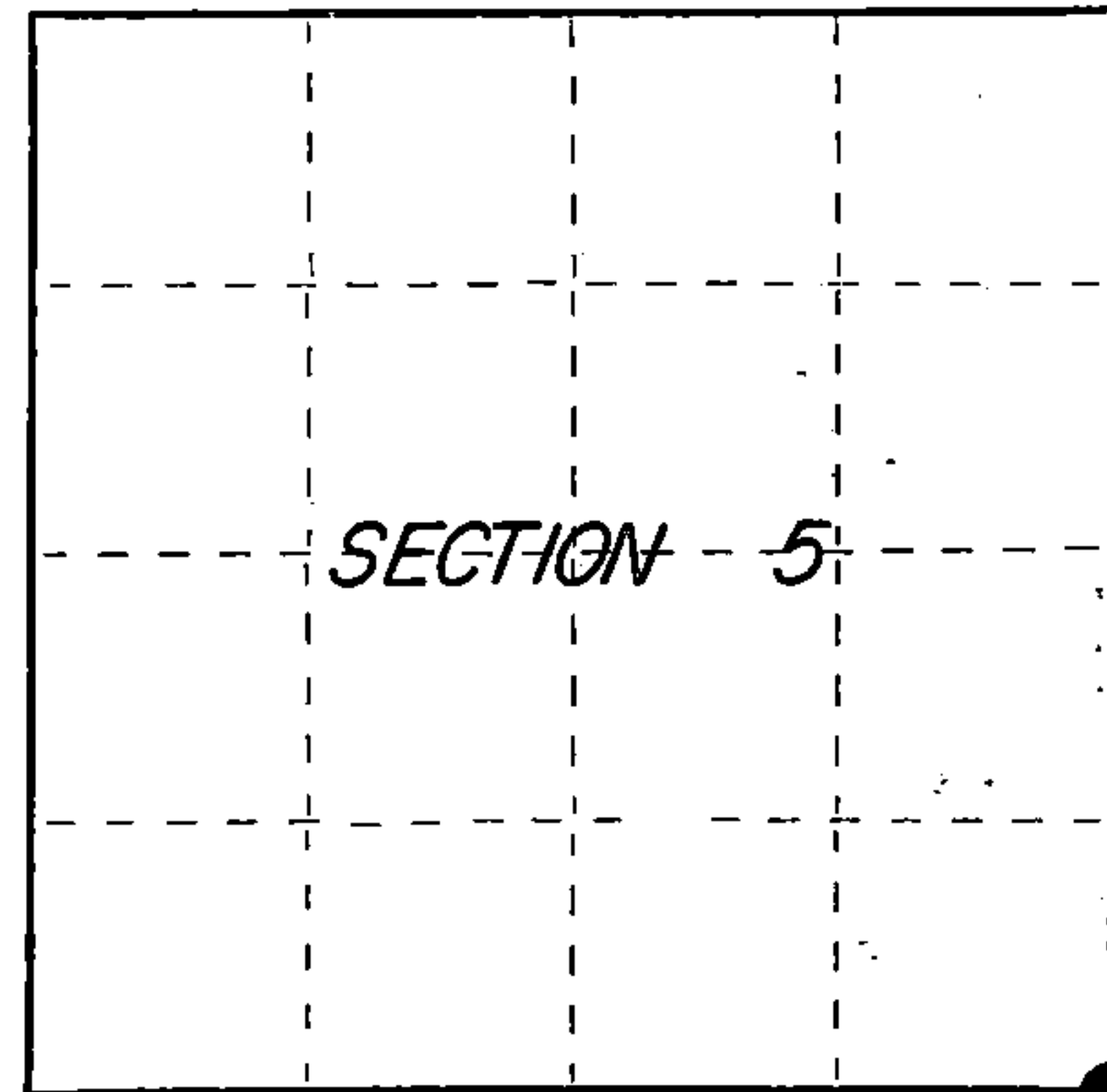
Index No. E-9

State of Wisconsin }  
County of Columbia } ss.

I JAMES R. GROTHMAN, do hereby certify that on the 10th day of October, 1986, I found evidence of the Southeast corner of Section 5 Township 38 North, Range 12 East, Fourth Principal Meridian, as described hereon; and that from this evidence I established a new monument and accessories as described hereon to perpetuate the original location of this corner.

Resident witnesses:

None



○ = Corner monument restored.

History of original corner establishment: Original survey by William E. Daugherty in 1859. Dependent resurvey by Wesson Cook in 1937. Set concrete monument 24 inches long 6 inches diameter, 20 inches in the ground reinforced with iron post 24 inches long, 1 inch diameter, with brass cap marked:

T38N R12E  
S5 S4  
S8 S9  
1937

From which the following bear:

Cherry	3"	N18-3/4°E	35 lks marked B.T.
Maple	10"	S69°E	203 lks marked T38NR12E S9 BT
Birch	4"	N77-3/4°W	57 lks marked T38NR12E S5 BT

Description of corner evidence found:

G.L.O. Monument found as described. No remaining evidence of bearing trees.

Description of monument and accessories I established to perpetuate the original location of this corner.

Corner in good condition. Blazed, scribed, painted, and posted the following new bearing trees:

Maple	10"	S35°E	12.20 feet
Maple	8"	N74°E	13.71 feet
Maple	6"	N28°W	27.20 feet
Maple	10"	S77°W	18.90 feet
Steel post 1 foot north of monument			

Dated at Portage, Wis., this 20 day of October, 1986

Signature James R. Grothman Title RLS Registration No. 1321  
(County Surveyor, Registered Land Surveyor, or other duly authorized official)

Office of Register of Deeds, County of Forest, I hereby certify that the within instrument was filed in this office for record on the 24th day of February, 1987 at 2:00 o'clock P. M.

Paul Aschenbrenner  
(Register of Deeds)

By Deputy

FORM NO. 985-A

H.C. Miller Company

Stock No. 26273

FOREST COUNTY

DOCUMENT NUMBER  
132152

REGISTER'S OFFICE  
Forest County, Wis.  
Received for record this 24th day  
of February A.D., 1987 at  
2:00 o'clock P. M. and recorded  
in Vol. 1000  
Page 59  
Paul Aschenbrenner  
Register of Deeds

43812050000

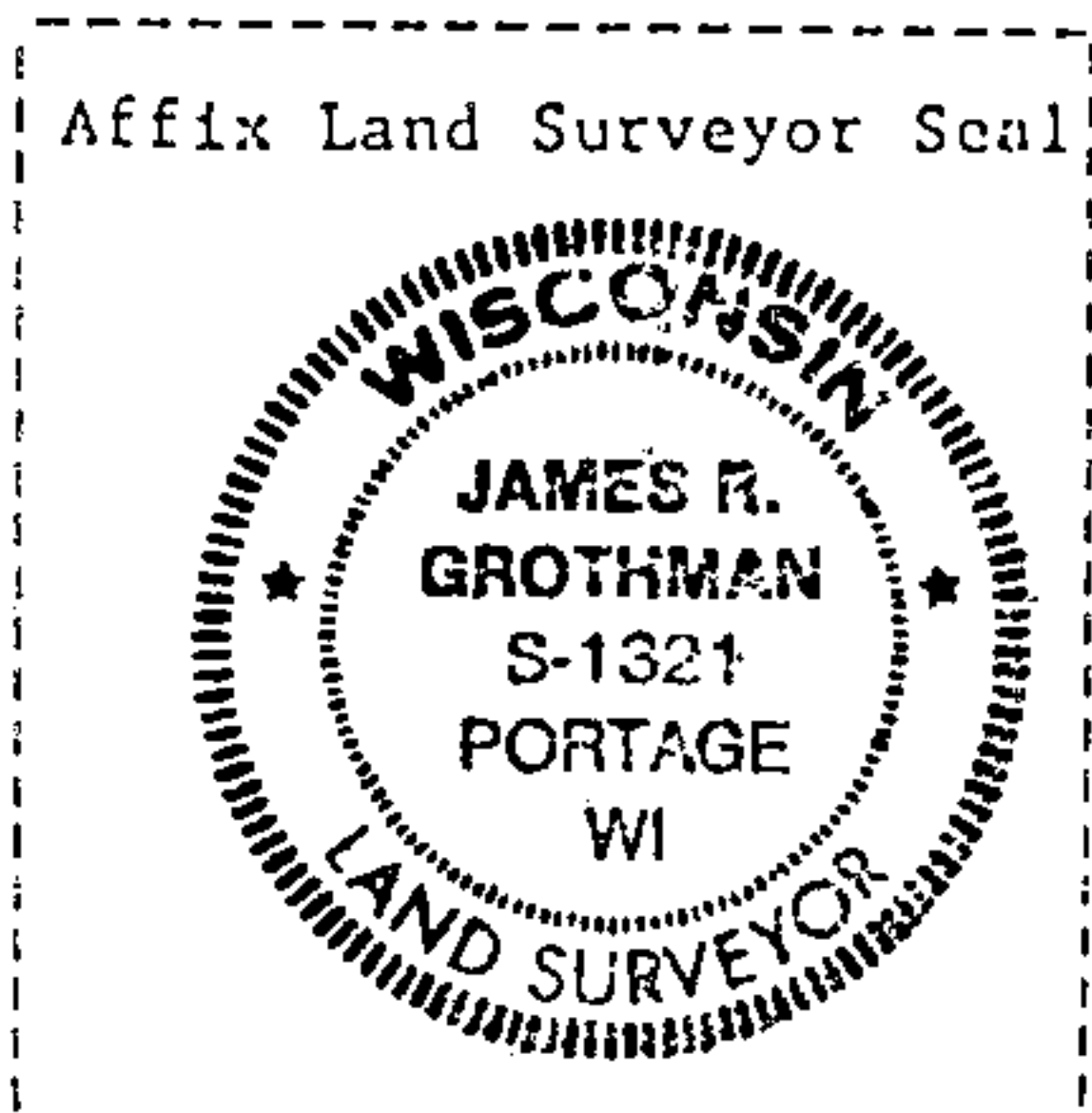
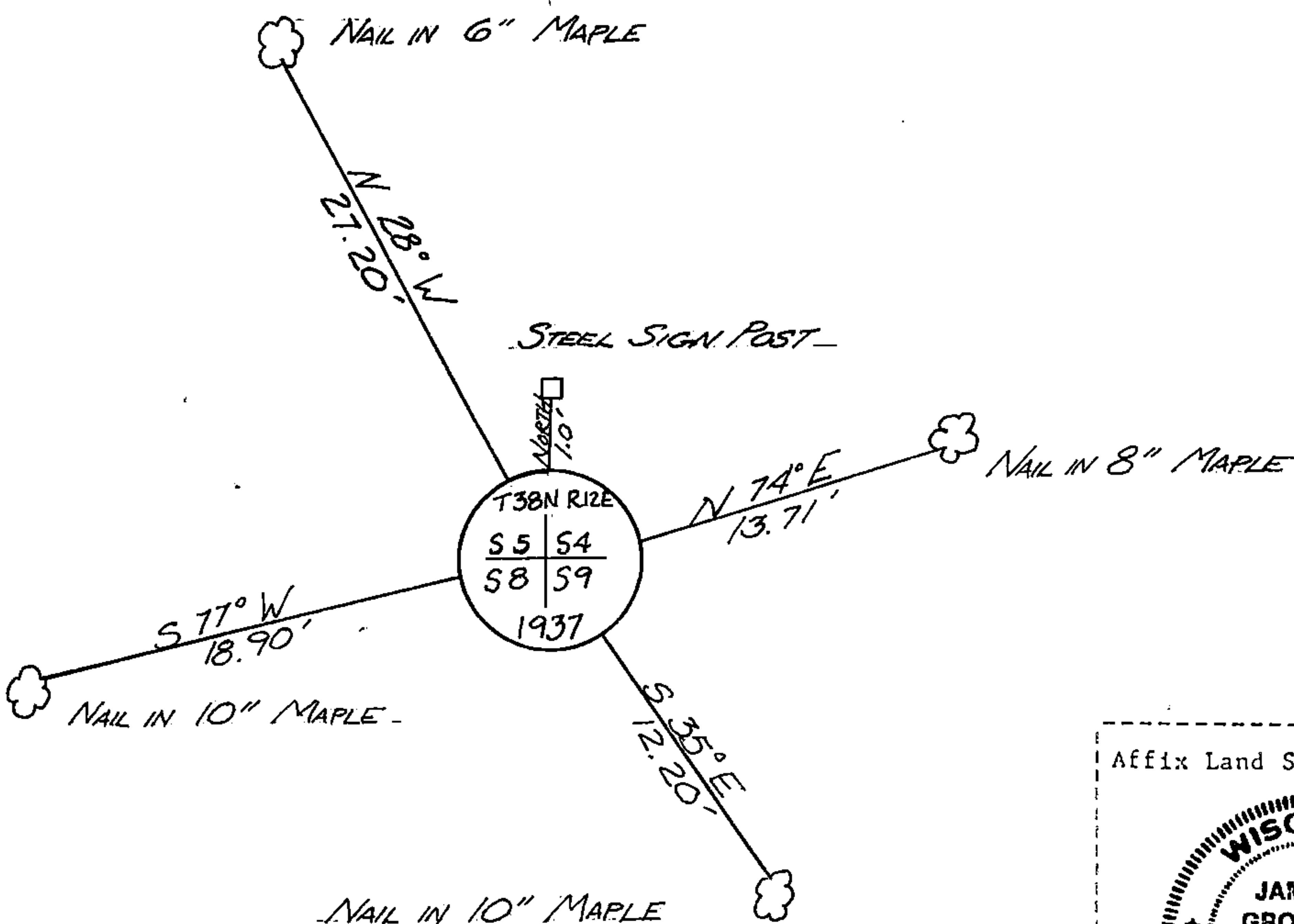
(e) Describe any material discrepancy between the location of the corner as restored or reestablished and the location of that corner as previously restored or reestablished by distance and direction. Show the discrepancy on the plan view drawing under (d), above. Show the distances between the corner as previously restored or reestablished and (1) the corner as restored or reestablished, and (2) to at least 2 of the witness monuments shown on the drawing in (d), above.

See G&H

(f) Was the corner restored through acceptance of (1) an obliterated evidence location, or, (2) a found perpetuated location?

Corner was restored through acceptance of a found perpetuated location.

(g&h) Was the corner reestablished through lost corner proportionate methods? If so, show the method, including the directions and distances to other public land survey corners used as evidence or used for proportioning in determining the corner location?



(i) I, JAMES R. GROTHMAN, Registered Land Surveyor No. 1321 (type or print name) certify that the corner location shown on this record was determined by me or under my direction and control and that this U.S. Public Land Survey Monument Record is correct and complete to the best of my knowledge and belief.

Signature James R. Grothman Date 10/30/86

Certificate ready for filing: N. Frank Hawley 1/6/87  
District Ranger Date