

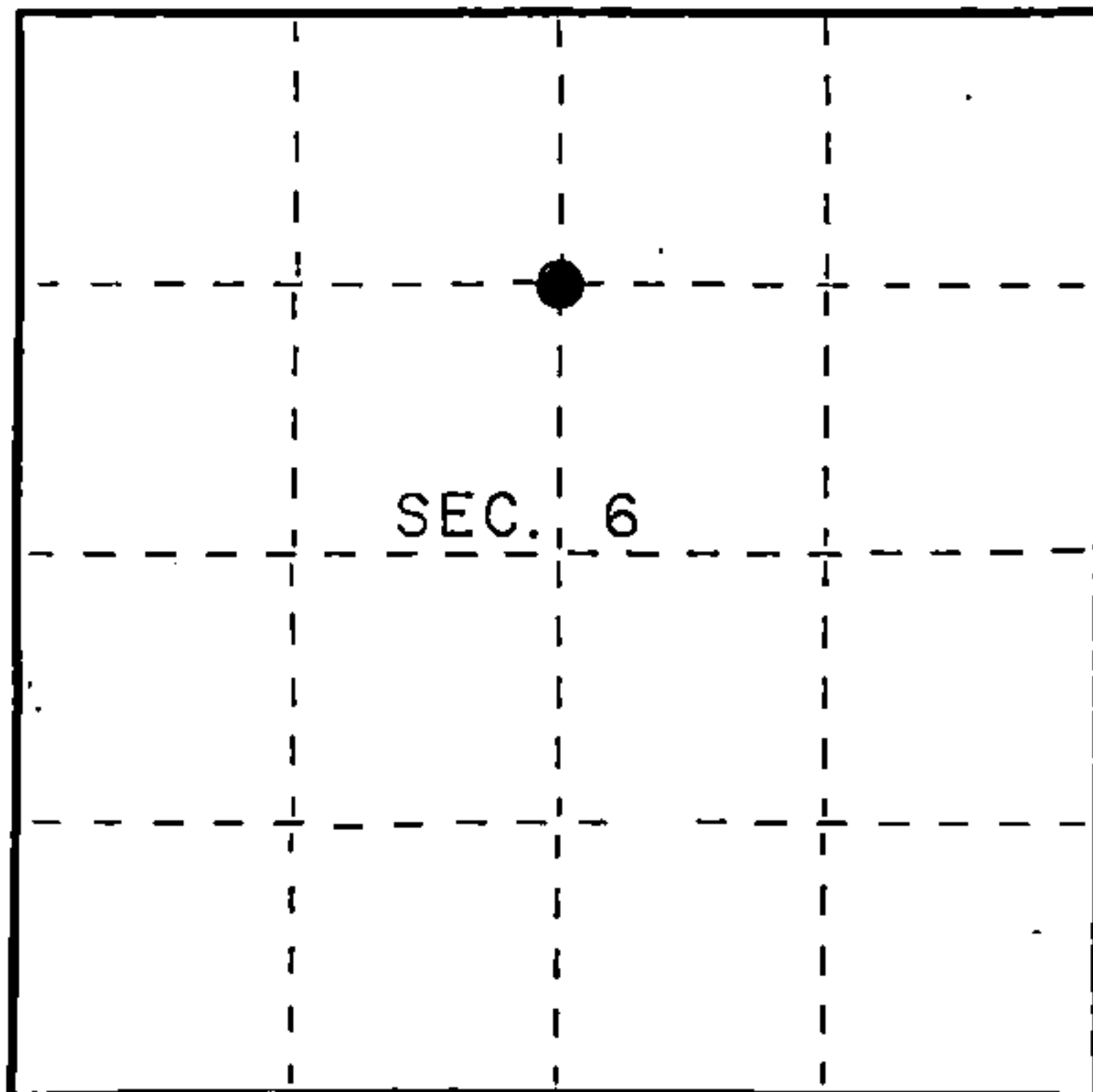
U.S. PUBLIC LAND SURVEY MONUMENT RECORD

Index No. B-3

State of Wisconsin }
 County of Forest } ss.

I, Kip W. Soder, do hereby
 certify that on the 6th day
 of September, 19 89, I found
 evidence of the Center-north 1/16
 corner of Section 6
 Township 38, North, Range
12 East, Fourth Principal Meridian,
 as described hereon; and that from this evidence
 I established a new monument and accessories
 as described hereon to perpetuate the original
 location of this corner.

Resident witnesses:

G.W. Soder

● = Corner monument restored.

History of original corner establishment:

Center-north 1/16 corner is set on the N-S $\frac{1}{4}$ line of Section 6
 at a proportionate distance proportional to the distances called
 for from the NW corner of Sec. 6 to the N 1/16 and from the NE
 corner of Sec. 6 to the N 1/16 called for by a dependent resurvey of
 Section 6, T38N, R12E in 1938.

Description of corner evidence found:

None

Description of monument and accessories I established to perpetuate the original location of this corner.

Set a 1" dia., 36" long aluminum pipe with an aluminum cap stamped
 to identify corner.

Made the following bearing trees:

N. Pine	5"	N 20° E	16.84 feet
N. Pine	7"	N 54° W	40.53 feet

Set Steel Sign Post Northeast 0.85 feet

Dated at Three Lakes, Wis., this 6th day of September, 1989.

Signature Kip W. Soder Title Registered Land Surveyor Registration No. S-1731
 (County Surveyor, Registered Land Surveyor, or other duly authorized official)

Office of Register of Deeds, County of Forest, I hereby certify that the within
 instrument was filed in this office for record on the 8th day of March, 1990
 at 1:00 o'clock P. M.

Paul A. Schenker
 (Register of Deeds)

By _____ Deputy

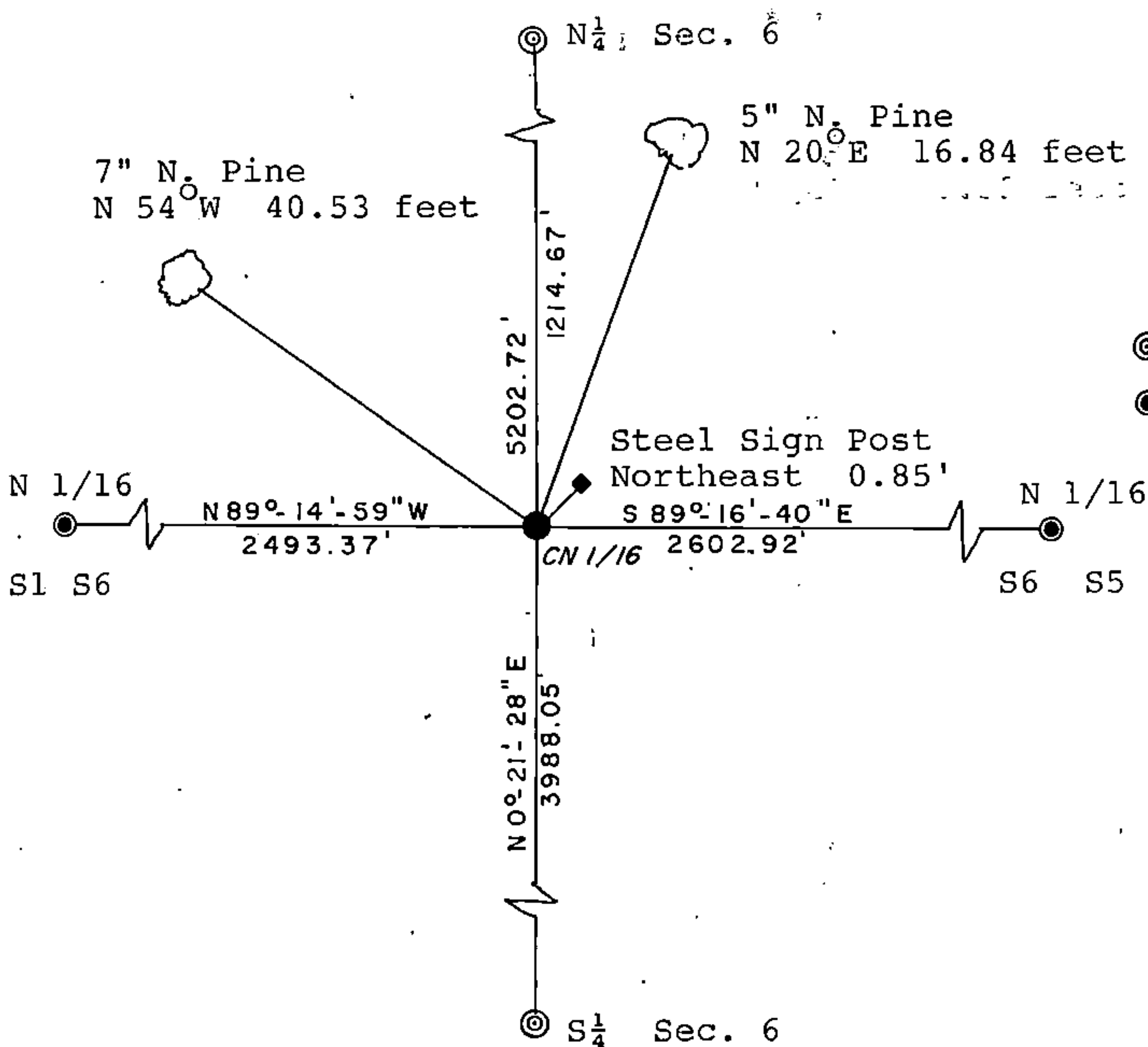
(e) Describe any material discrepancy between the location of the corner as restored or reestablished and the location of that corner as previously restored or reestablished by distance and direction. Show the discrepancy on the plan view drawing under (d), above. Show the distances between the corner as previously restored or reestablished and (1) the corner as restored or reestablished, and (2) to at least 2 of the witness monuments shown on the drawing in (d), above.

See Drawing below.

(f) Was the corner restored through acceptance of (1) an obliterated evidence location, or, (2) a found perpetuated location?

None

(g&h) Was the corner reestablished through lost corner proportionate methods? If so, show the method, including the directions and distances to other public land survey corners used as evidence or used for proportioning in determining the corner location?



⊙ G.L.O. concrete mon.
● 2 1/2" Aluminum mon.



(i) I, Kip W. Soder
(type or print name) certify that the corner location shown on this record was determined by me or under my direction and control and that this U.S. Public Land Survey Monument Record is correct and complete to the best of my knowledge and belief.

Kip W. Soder Sept. 12, 1989
Signature Date

Survey requested by: Sam Yarkin 1/5/90
District Ranger Date