

U.S. PUBLIC LAND SURVEY MONUMENT RECORD

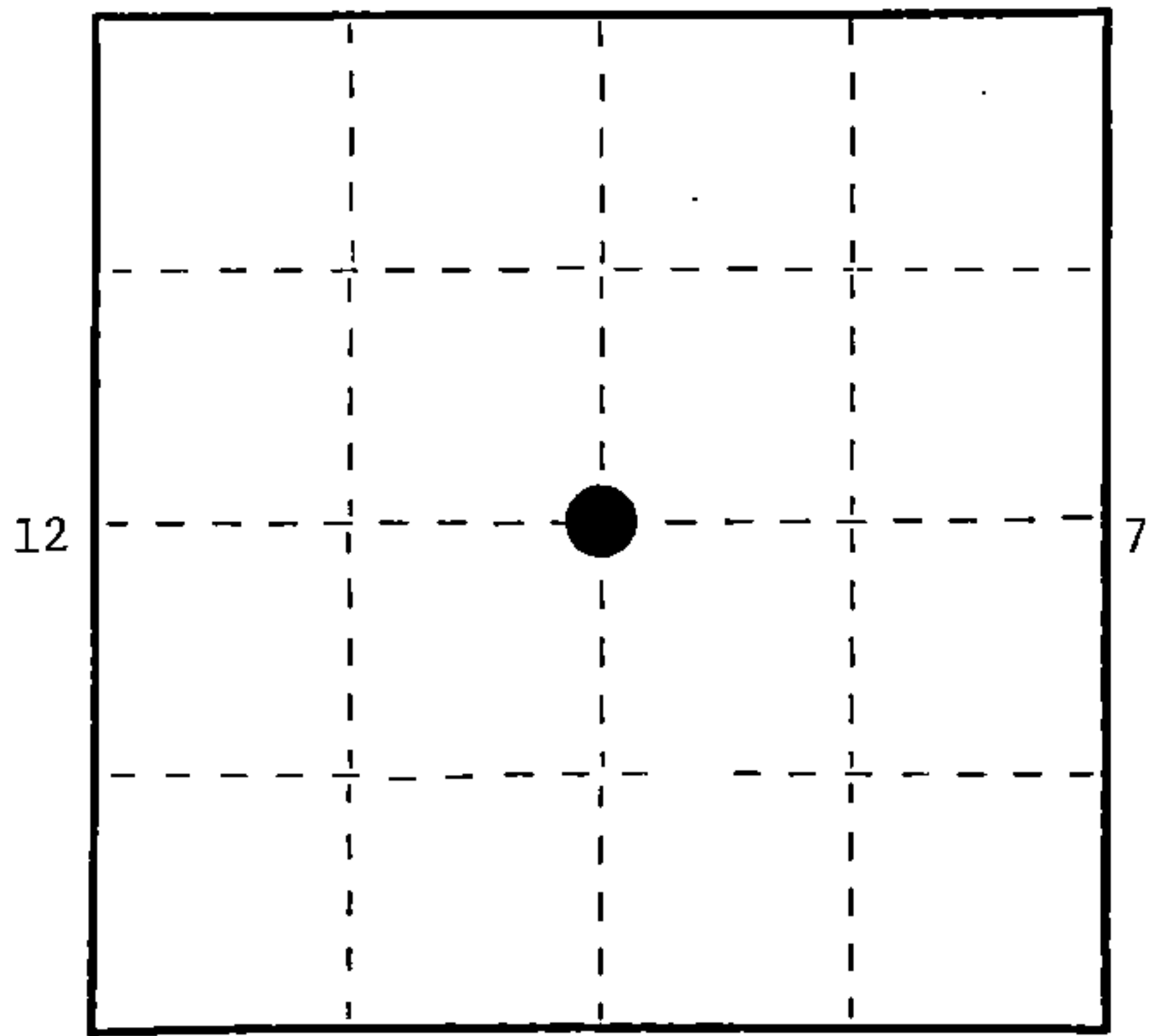
Index No. G,H-1

State of Wisconsin }
County of Forest } ss.

I Milo E. Stefan, do hereby
certify that on the 10th day
of October, 1988, I found
evidence of the Witness Corner Meander
corner of Sections 7 and 12
Township 38, North, Range
11 & 12 East, Fourth Principal Meridian,
as described hereon; and that from this evidence
I established a new monument and accessories
as described hereon to perpetuate the original
location of this corner.

Resident witnesses:

Jeffrey L. Kennedy
Myron L. Smith
Jeanne M. Stefan



○ = Corner monument restored.

History of original corner establishment:

1937 G.L.O. established this Witness Corner to the Meander Corner which now falls .38
chains northerly in Julia Lake.
G.L.O. set a 6" x 24" concrete monument with two BTs:
11" Hemlock, S46 3/4°E, 45 links (29.70')
10" White Pine, S54 1/4°W, 59 links (38.94')

Description of corner evidence found:

Both BTs in good condition. Monument has been moved by activity along the shore.
It is 1.53 feet too far southerly as pulled from the bearing trees.

Description of monument and accessories I established to perpetuate the original location of this corner.

We reset the G.L.O. monument in it's proper location as pulled from the two 1937
bearing trees. We also set a steel sign post and made one new bearing object:
Northwest Corner of Boat House, S52°E, 25.08'
6' Steel Sign Post, West, 2.3'

Monument is 6" below ground level on West edge of area being used as the boat landing.

Dated at CRandon, Wis., this 15th day of November, 1988

Signature: Milo E. Stefan Title: Land Surveyor Registration No. S-1558
(County Surveyor, Registered Land Surveyor, or other duly authorized official)

Office of Register of Deeds, County of Forest, I hereby certify that the within
instrument was filed in this office for record on the 7th day of March, 1989
at 9:55 o'clock A. M.

Paul Aschenbrenner
(Register of Deeds)

By Sandra L. Neddo Deputy

FORM NO. 985-A
H.C. Miller Company
Milwaukee, Wisconsin

Stock No. 26273

DOCUMENT NUMBER
137006

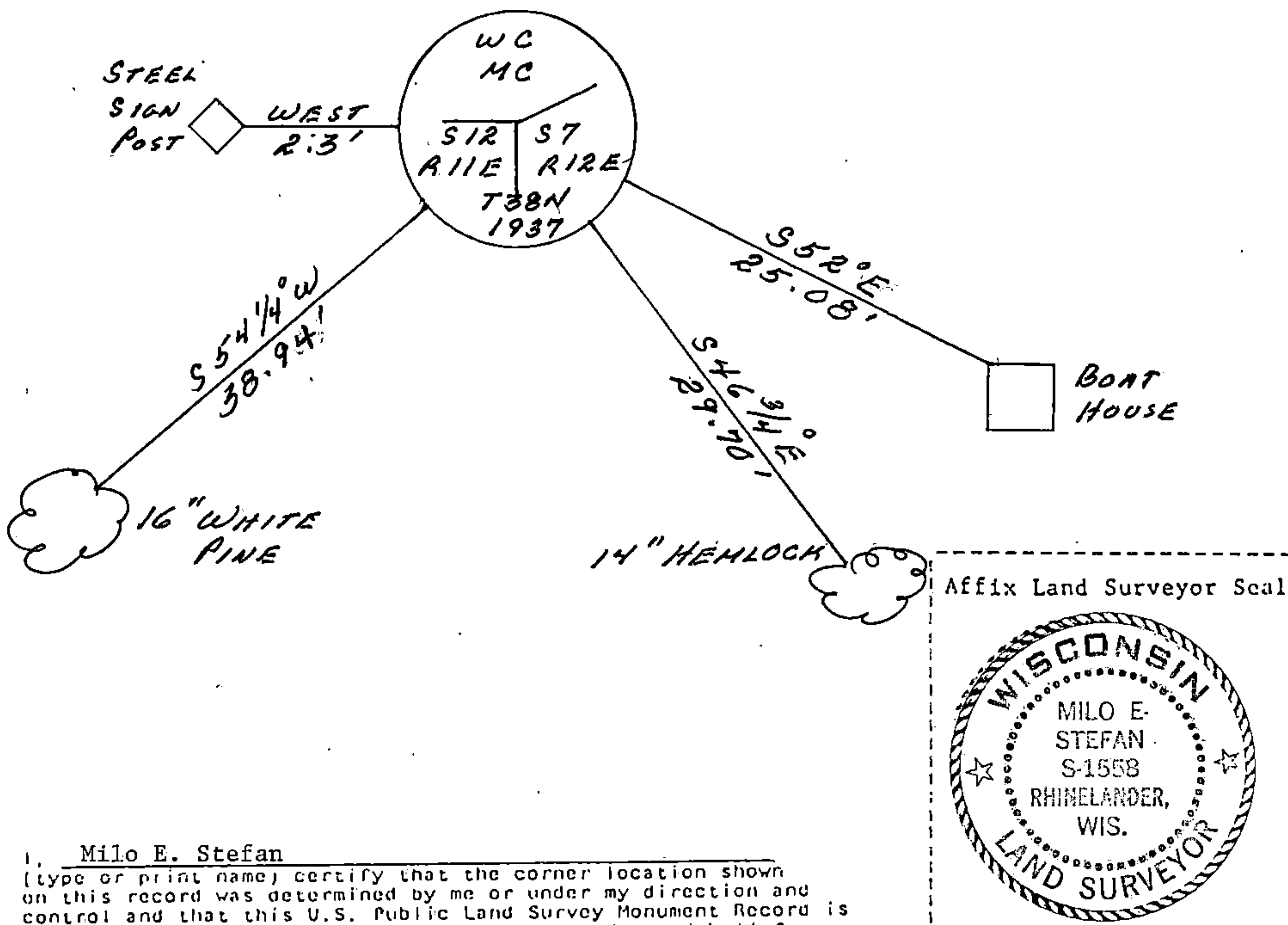
43812122000

(e) Describe any material discrepancy between the location of the corner as restored or reestablished and the location of that corner as previously restored or reestablished by distance and direction. Show the discrepancy on the plan view drawing under (d), above. Show the distances between the corner as previously restored or reestablished and (1) the corner as restored or reestablished, and (2) to at least 2 of the witness monuments shown on the drawing in (d), above.

(f) Was the corner restored through acceptance of (1) an obliterated evidence location, or, (2) a found perpetuated location?

Reset monument from GLO BTs.

(g&h) Was the corner reestablished through lost corner proportionate methods? If so, show the method, including the directions and distances to other public land survey corners used as evidence or used for proportioning in determining the corner location?



(i) I, Milo E. Stefan
(type or print name) certify that the corner location shown on this record was determined by me or under my direction and control and that this U.S. Public Land Survey Monument Record is correct and complete to the best of my knowledge and belief.

Milo E. Stefan
Signature

11/4/88
Date

Certificate ready for filing:

Charles Jordan
District Ranger