

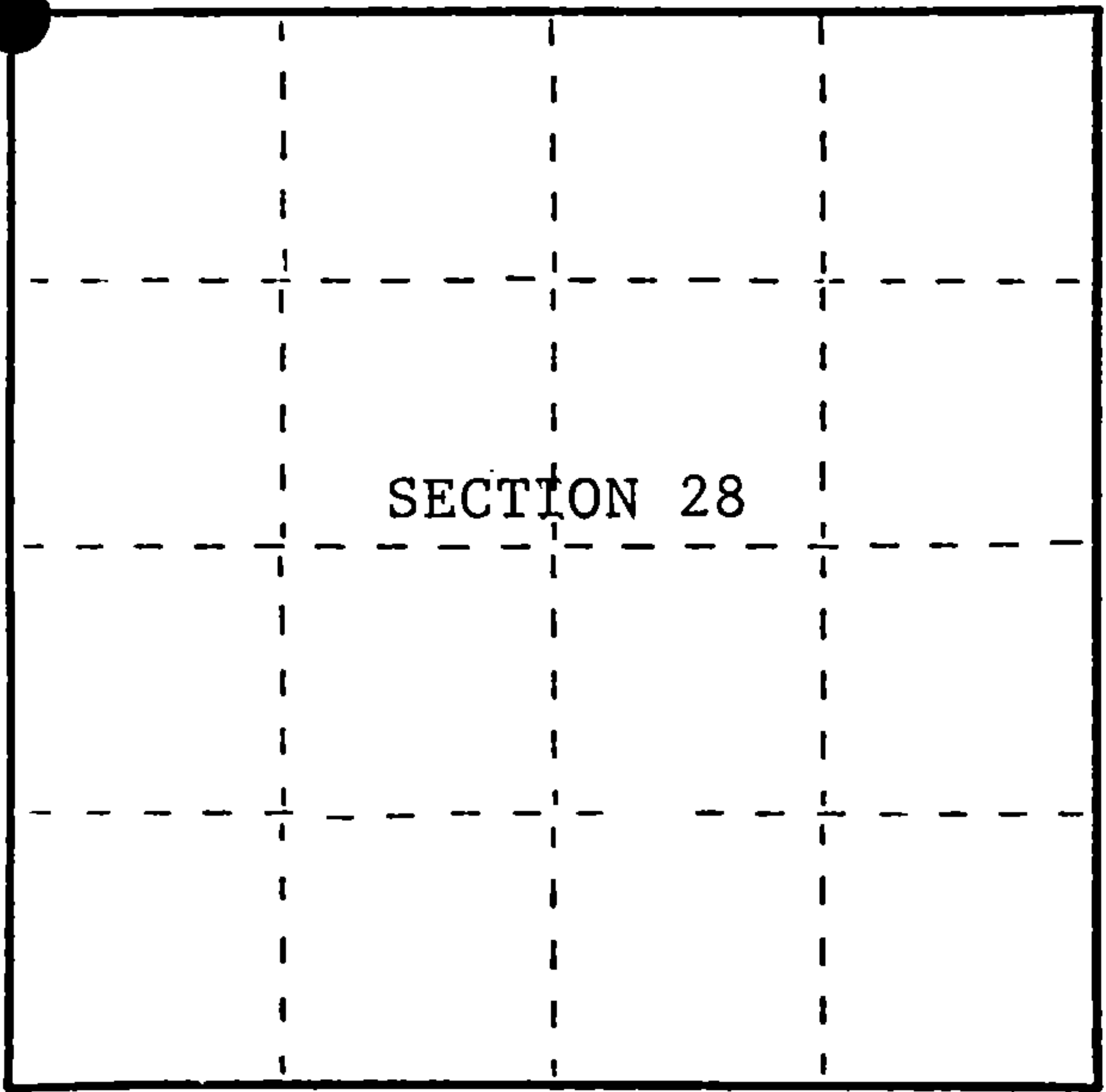
U.S. PUBLIC LAND SURVEY MONUMENT RECORD

Index No. R-9

State of Wisconsin }
County of Forest } ss.

I William B. Cochran, do hereby
certify that on the 15th day
of June, 1990, I found
evidence of the Northwest Section
corner of Section 28
Township 38 North, Range
13 East, Fourth Principal Meridian,
as described hereon; and that from this evidence
I established a new monument and accessories
as described hereon to perpetuate the original
location of this corner.

Resident witnesses:



● = Corner monument restored.

History of original corner establishment:
Original Government Survey in 1865 by H. & J.L. Nowlin. North between Sections
28 and 29, at 80.00 chs., set Section Corner Post to Sections 20, 21, 28 and 29.
From which the following bear;
Fir 12" N12°E 3 links
Birch 20" N14°W 30 links

In 1937, Forest Service Compassman in searching this area referenced the corner position
to an old wagon road running North and South. The corner position was also referenced
to a wood post and tag 20 chains South from this corner position.

Description of corner evidence found:

Found tag and Hemlock stump remains 20 chains South at the North Sixteenth Corner position.

Found depression from a Yellow Birch stump N14°W, 19.8 feet, and also found a
depression from a Fir stump N12°E, 1.98 feet.

I accept the 1937 corner info along with original bearing tree evidence as the best
available evidence for restoring the corner position.

Description of monument and accessories I established to perpetuate the original location of this corner.
At the corner position, set a 2½ inch diameter aluminum pipe monument, 3 feet long,
2½ feet in the ground, with an aluminum cap stamped; T38N, R13E, S20, S21, S28, S29,
1990, S-1107. From which the following new blazed and scribed bearing trees bear;

Ironwood	7"	N50°E	7.86 feet
S. Maple	12"	S72°E	6.83 feet
Set Steel Sign Post		SE	0.50 feet

Dated at Hiles, Wis., this 14th day of February, 1991

Signature William B. Cochran Title Land Surveyor Registration No. S-1107
(County Surveyor, Registered Land Surveyor, or other duly authorized official)

Office of Register of Deeds, County of Forest, I hereby certify that the within
instrument was filed in this office for record on the 3rd day of August, 1992
at 10:15 o'clock A.M.

Paul Aschbacher
(Register of Deeds)

By Deputy

FORM NO. 985-A

H. C. Miller Company

Stock No. 26273
DOCUMENT NUMBER
145342

43813200000

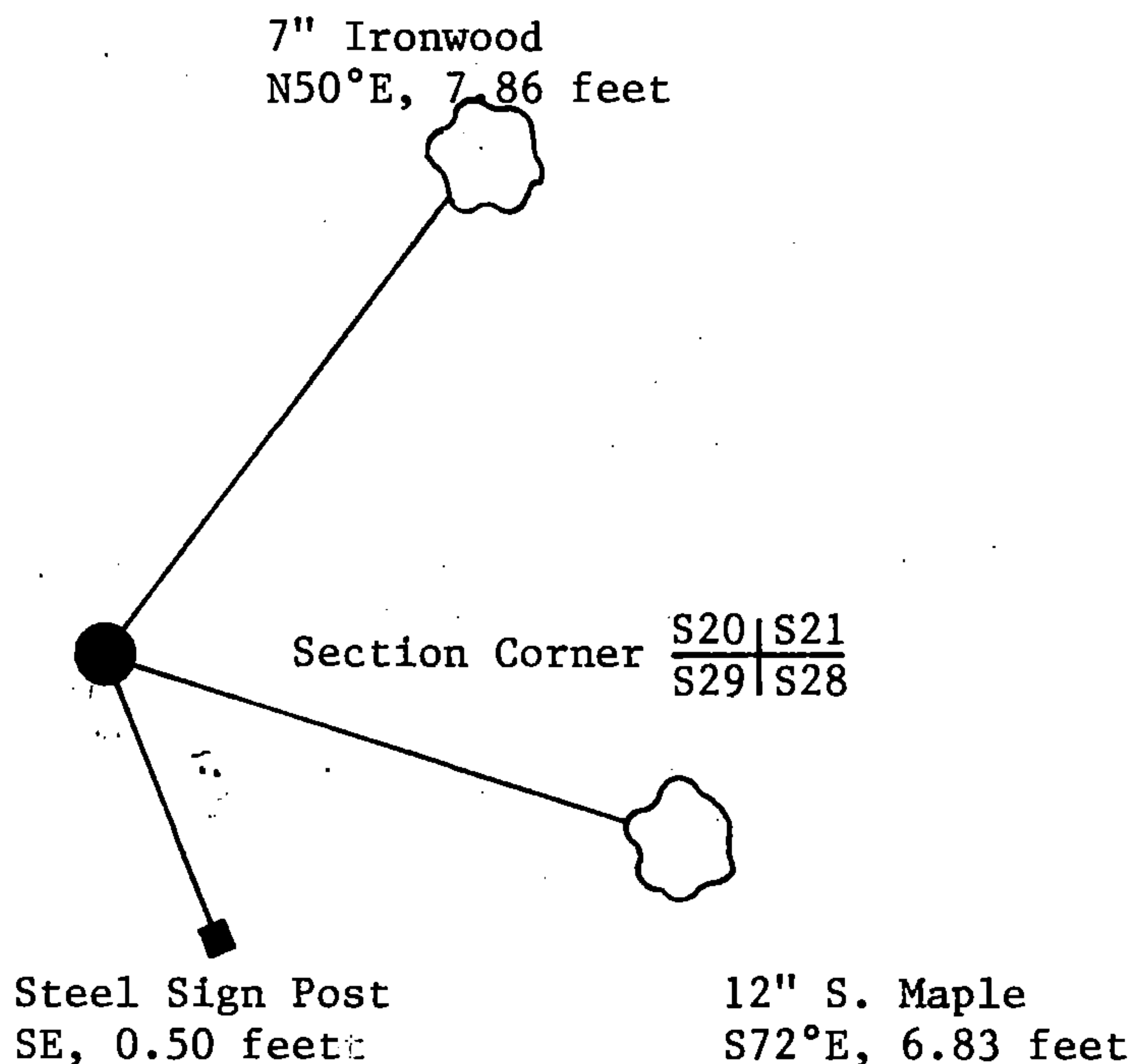
- (e) Describe any material discrepancy between the location of the corner as restored or reestablished and the location of that corner as previously restored or reestablished by distance and direction. Show the discrepancy on the plan view drawing under (d), above. Show the distances between the corner as previously restored or reestablished and (1) the corner as restored or reestablished, and (2) to at least 2 of the witness monuments shown on the drawing in (d), above.

See drawing below.

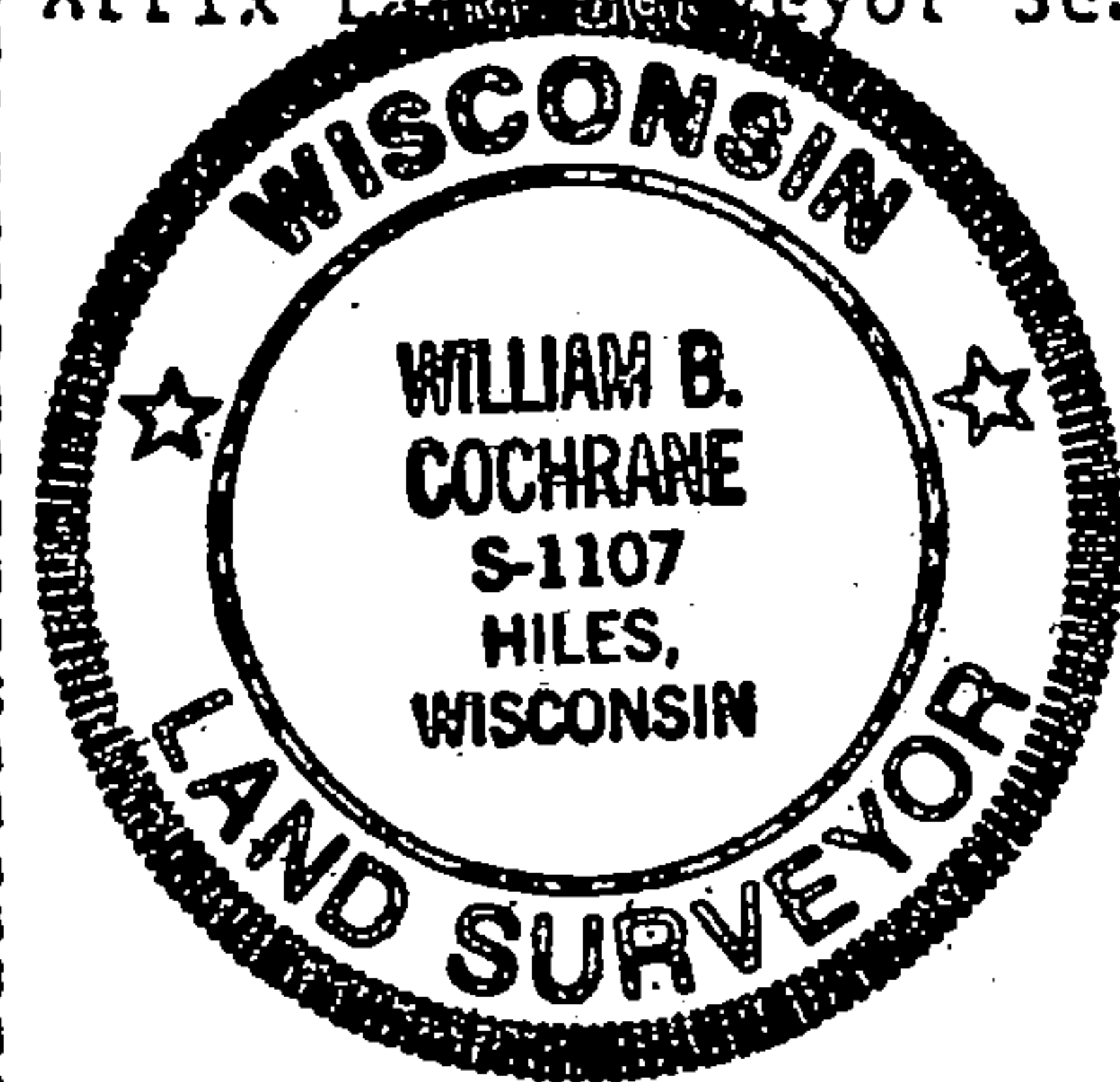
- (f) Was the corner restored through acceptance of (1) an obliterated evidence location, or, (2) a found perpetuated location?

Restored through acceptance of a found perpetuated location.

- (g&h) Was the corner reestablished through lost corner proportionate methods? If so, show the method, including the directions and distances to other public land survey corners used as evidence or used for proportioning in determining the corner location?



Affix Land Surveyor Seal



- (i) 1. William B. Cochrane
(Type or print name) certify that the corner location shown on this record was determined by me or under my direction and control and that this U.S. Public Land Survey Monument Record is correct and complete to the best of my knowledge and belief.

William B. Cochrane 1/21/92
Signature Date

Survey requested by: Janet York 1/22/92
District Ranger Date