

U.S. PUBLIC LAND SURVEY MONUMENT RECORD

Index No. R-19

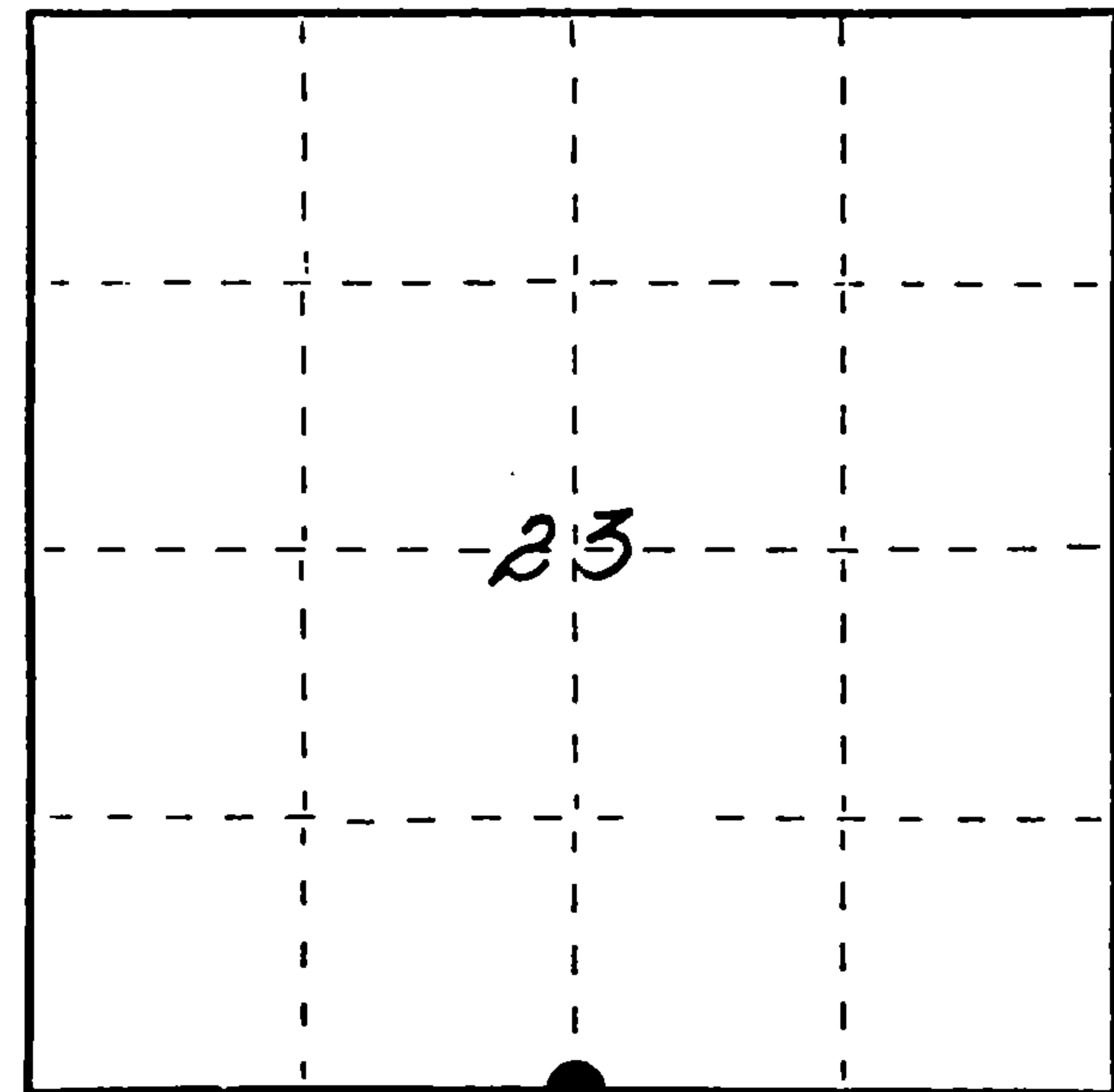
State of Wisconsin }
County of Forest } ss.

I Milo E. Stefan, do hereby
certify that on the 5th day
of July, 1990, I found
evidence of the restored this S. 1/4
corner of Section 23
Township 38 North, Range
13 East, Fourth Principal Meridian,
as described hereon; and that from this evidence
I established a new monument and accessories
as described hereon to perpetuate the original
location of this corner.

Resident witnesses:

Myron Smith

Jeffrey Kennedy



● = Corner monument restored.

History of original corner establishment:

Corner was established by H. & J. L. Nowlin in 1865. He set a wood post and two BTs:
12" Tamarack, N52°E, 9 Links 6" Fir, S62°W, 19 Links

Description of corner evidence found:

No evidence of corner remains. I, therefore, declare the corner as lost and restore
it by Lost Methods, "Single Proportionate Measurement".

Description of monument and accessories I established to perpetuate the original location of this corner.

We placed a 2" x 60" Aluminum Monument in mound of stone, made new BTs and set Steel
Sign Post:

- 8" Cedar, North, 18.23'
- 10" Cedar, N77°E, 15.11'
- 10" Cedar, S45°W, 21.30'
- 10" Cedar, N66°W, 19.52'
- 6" Steel Sign Post, NE, 1.4'

Dated at Rhinelander, Wis., this 9th day of July, 1990

Signature Milo E. Stefan Title Land Surveyor Registration No. 1558
(County Surveyor, Registered Land Surveyor, or other duly authorized official)

Office of Register of Deeds, County of Forest I hereby certify that the within
instrument was filed in this office for record on the 10th day of December, 1991
at 10:15 o'clock A. M.

(Register of Deeds)
By Leah Chitka Deputy

FORM NO. 985-A

H.C. Miller Company

Stock No. 26273
DOCUMENT NUMBER
143394

43813 230020

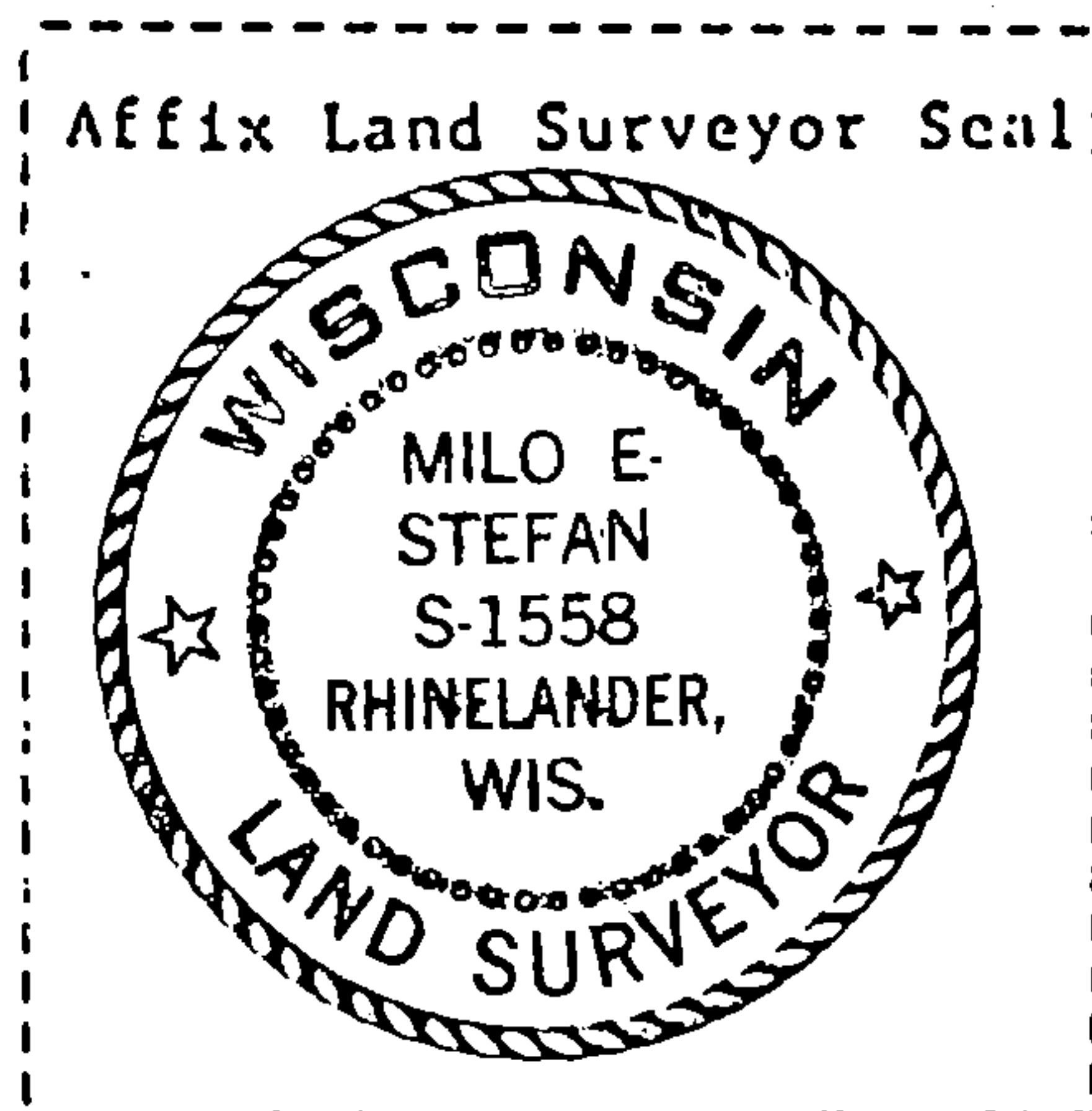
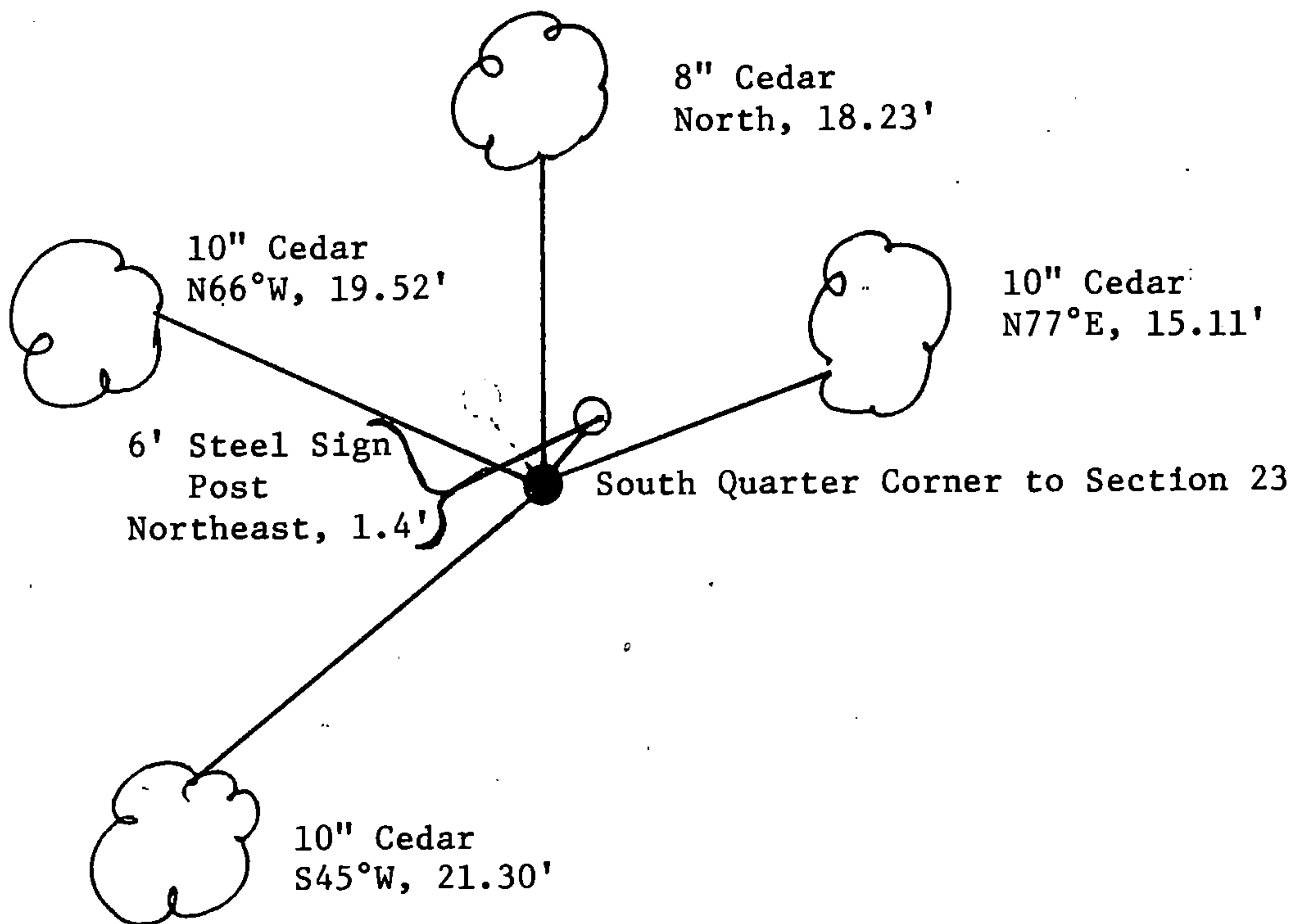
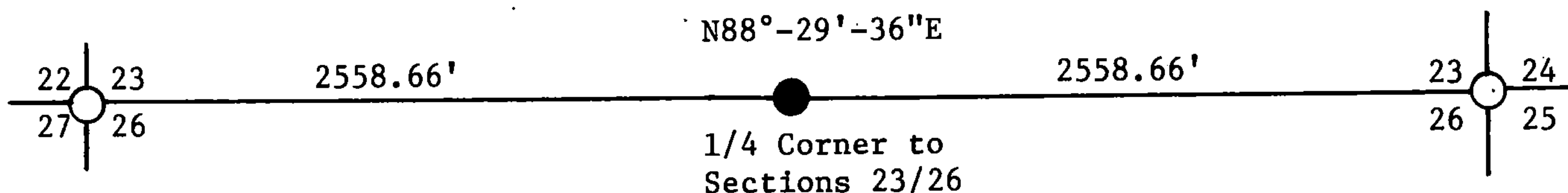
e) Describe any material discrepancy between the location of the corner as restored or reestablished and the location of that corner as previously restored or reestablished by distance and direction. Show the discrepancy on the plan view drawing under (d), above. Show the distances between the corner as previously restored or reestablished and (1) the corner as restored or reestablished, and (2) to at least 2 of the witness monuments shown on the drawing in (d), above.

None

(f) Was the corner restored through acceptance of (1) an obliterated evidence location, or, (2) a found perpetuated location?

N/A

(g&h) Was the corner reestablished through lost corner proportionate methods? If so, show the method, including the directions and distances to other public land survey corners used as evidence or used for proportioning in determining the corner location?



(i) I, Milo E. Stefan
(type or print name) certify that the corner location shown on this record was determined by me or under my direction and control and that this U.S. Public Land Survey Monument Record is correct and complete to the best of my knowledge and belief.

Milo E. Stefan
Signature

7/9/1990
Date

Survey requested by: Dale S. Staege

District Ranger

6/4/91
Date