

U. S. PUBLIC LAND SURVEY MONUMENT RECORD

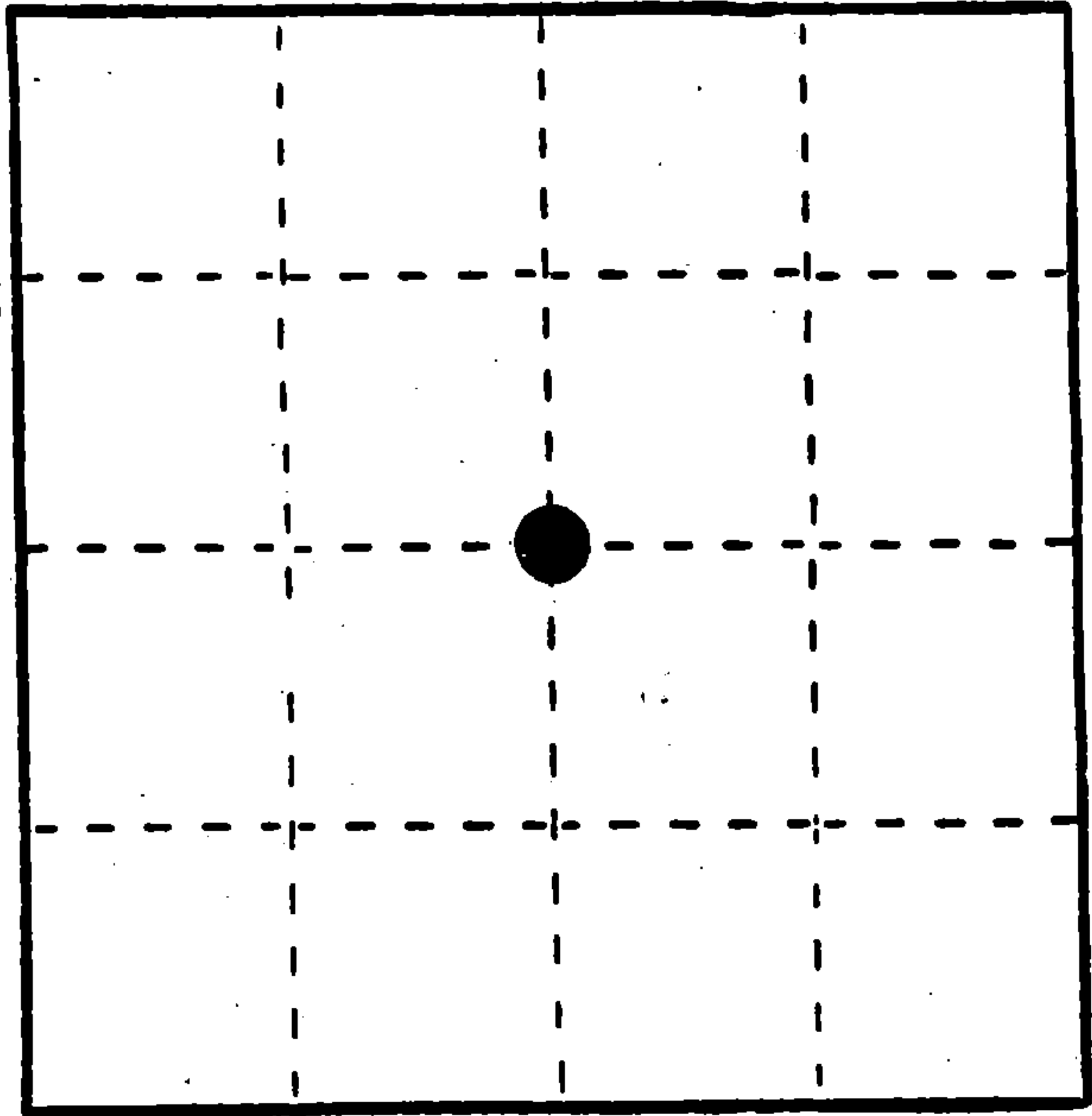
INSTRUCTIONS: This record shall show the location of the corner and shall include all of the following nine elements (a through i).

- (a) Identify the corner by reference to the U.S. public land survey system.
 O = Corner monument restored.

Quarter corner common to Sections 35 & 36
 T.38N., R.13E., Forest County, Wisconsin.

35

36



REGISTER'S OFFICE
 Forest County, Wis.

Received for record this 8th day

of October A.D. 1986 at

1:25 o'clock P.M. and recorded

in Vol. CORNER RESTORATIONS

page X-21

Paul Aschenbrenner
 Register of Deeds

- (b) Describe any record evidence, monument evidence, occupational evidence, testimonial evidence or any other material evidence you considered, and whether the monument was found or placed.

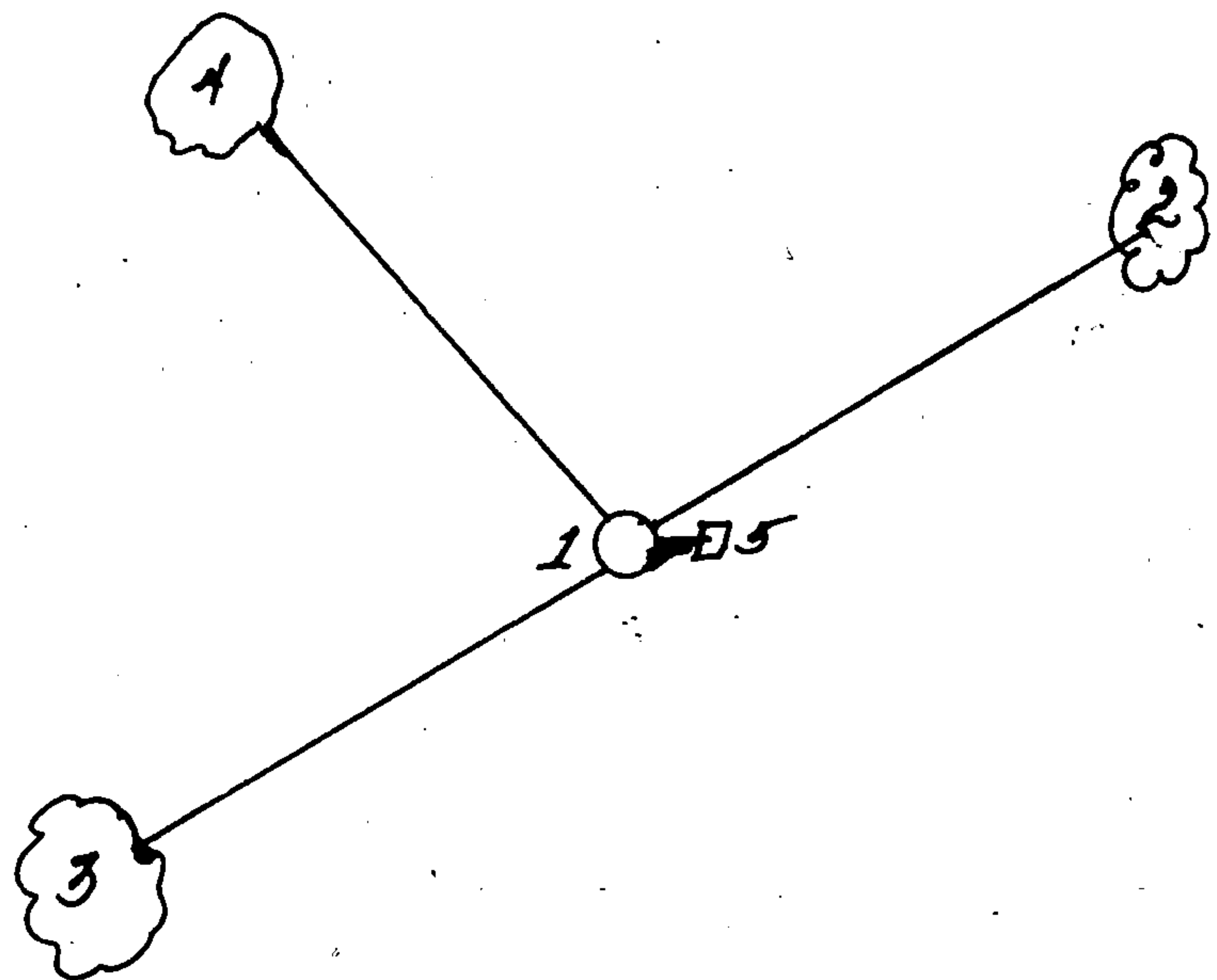
In 1865, H.&J.L. Nowlin set this $\frac{1}{4}$ corner at 40.00 chains north of the section corner. They set a post to mark the corner and placed the following references; 8" Tamarack, N.31E., 30 links; 7" Tamarack, S.53W., 35 links.

In August of 1970 the Forest Service located a post near this corner. We again located this post in 1984, during this survey. We also located similar posts at the 1/16th corners north and south of this corner. No survey of record has been located to support these posts. I therefore restore this corner by lost methods.

- (c) In the plan view drawing below, provide reference ties to at least 4 witness monuments, or, if the location is within a municipality, to at least 2 witness monuments. (Witness monuments shall be made of concrete, natural stone, iron or other equally durable material.)
 Describe witness monuments.

- (d) Show a plan view drawing depicting the relevant monuments and reference ties which is sufficient in detail to enable accurate relocation of the corner monument if the corner monument is disturbed. Indicate north.

1. 2" Aluminum monument 60" long stamped to identify corner.
2. 5" Tamarack, N.53°E., 21.33 feet.
3. 8" Tamarack, S.52°W., 11.38 feet.
4. 5" Black spruce N.51°W., 44.03 feet.
5. Steel sign post, 7', East, 1.0 feet.



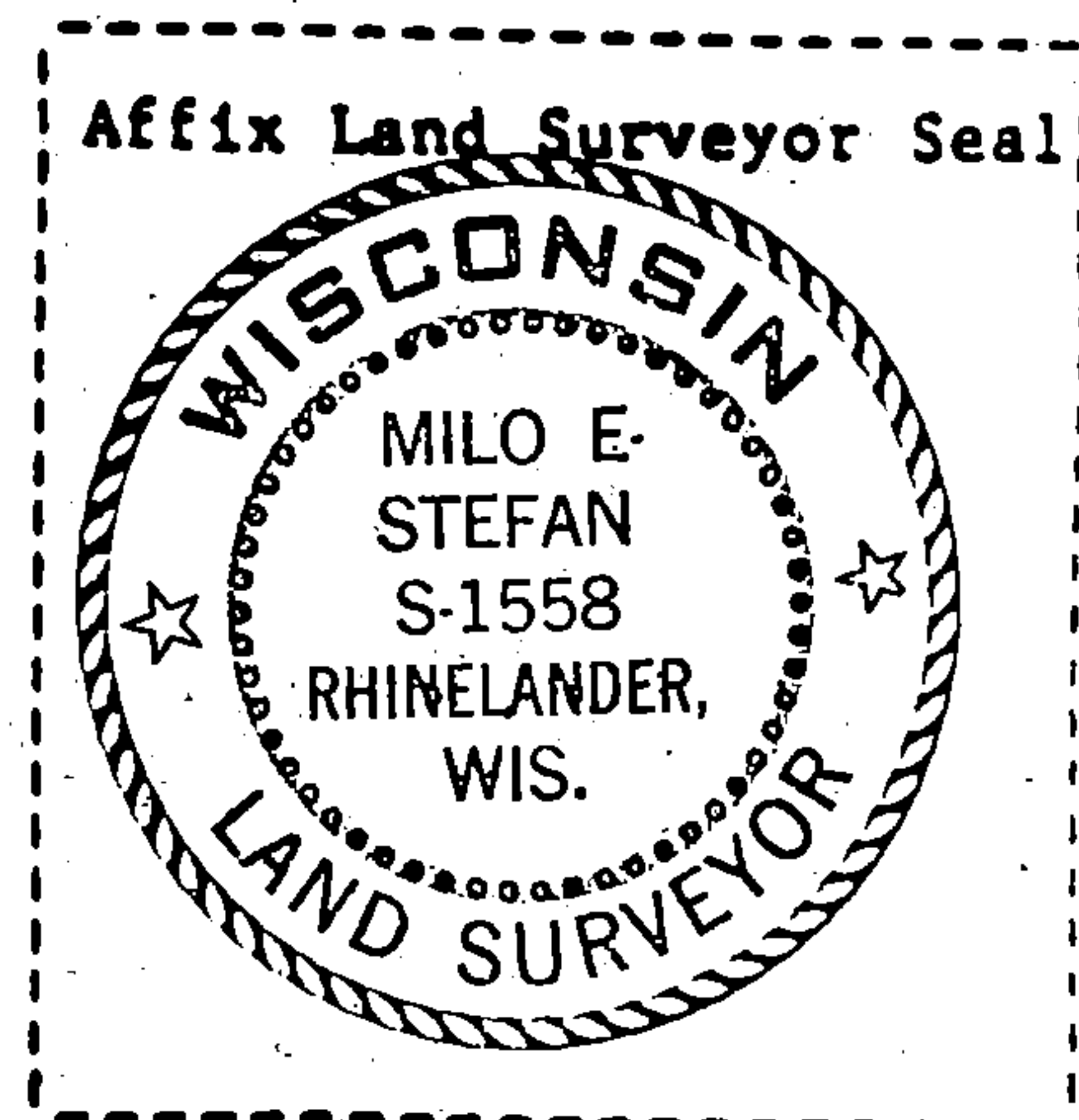
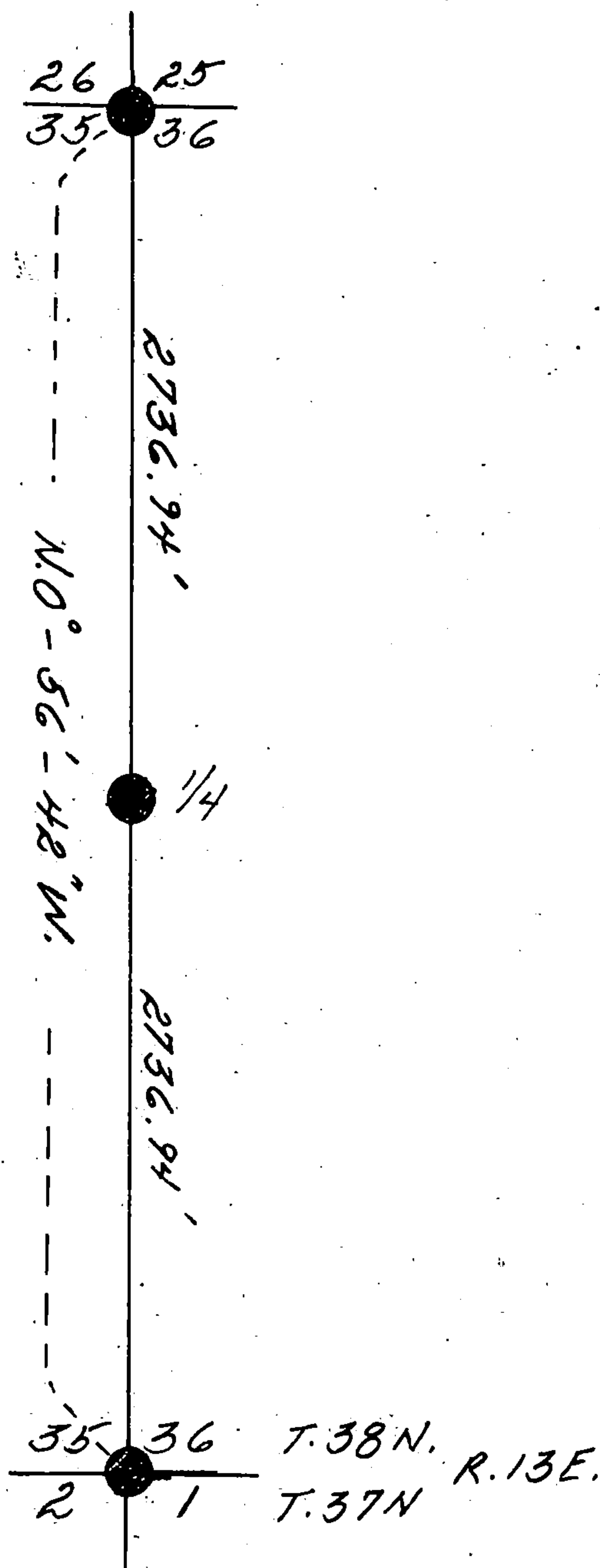
- (e) Describe any material discrepancy between the location of the corner as restored or reestablished and the location of that corner as previously restored or reestablished by distance and direction. Show the discrepancy on the plan view drawing under (d), above. Show the distances between the corner as previously restored or reestablished and (1) the corner as restored or reestablished, and (2) to at least 2 of the witness monuments shown on the drawing in (d), above.

The post in (b.) above bears N^{71°-41'-06"E.}, 30.52 feet.

- (f) Was the corner restored through acceptance of (1) an obliterated evidence location, or, (2) a found perpetuated location?

No.

- (g&h) Was the corner reestablished through lost corner proportionate methods? If so, show the method, including the directions and distances to other public land survey corners used as evidence or used for proportioning in determining the corner location?



- (i) I, Milo E. Stefan (type or print name) certify that the corner location shown on this record was determined by me or under my direction and control and that this U.S. Public Land Survey Monument Record is correct and complete to the best of my knowledge and belief.

Milo E. Stefan
Signature

7/1/85
Date

U. S. PUBLIC LAND SURVEY MONUMENT RECORD

INSTRUCTIONS:

This record shall show the location of the corner and shall include all of the following nine elements (a through i).

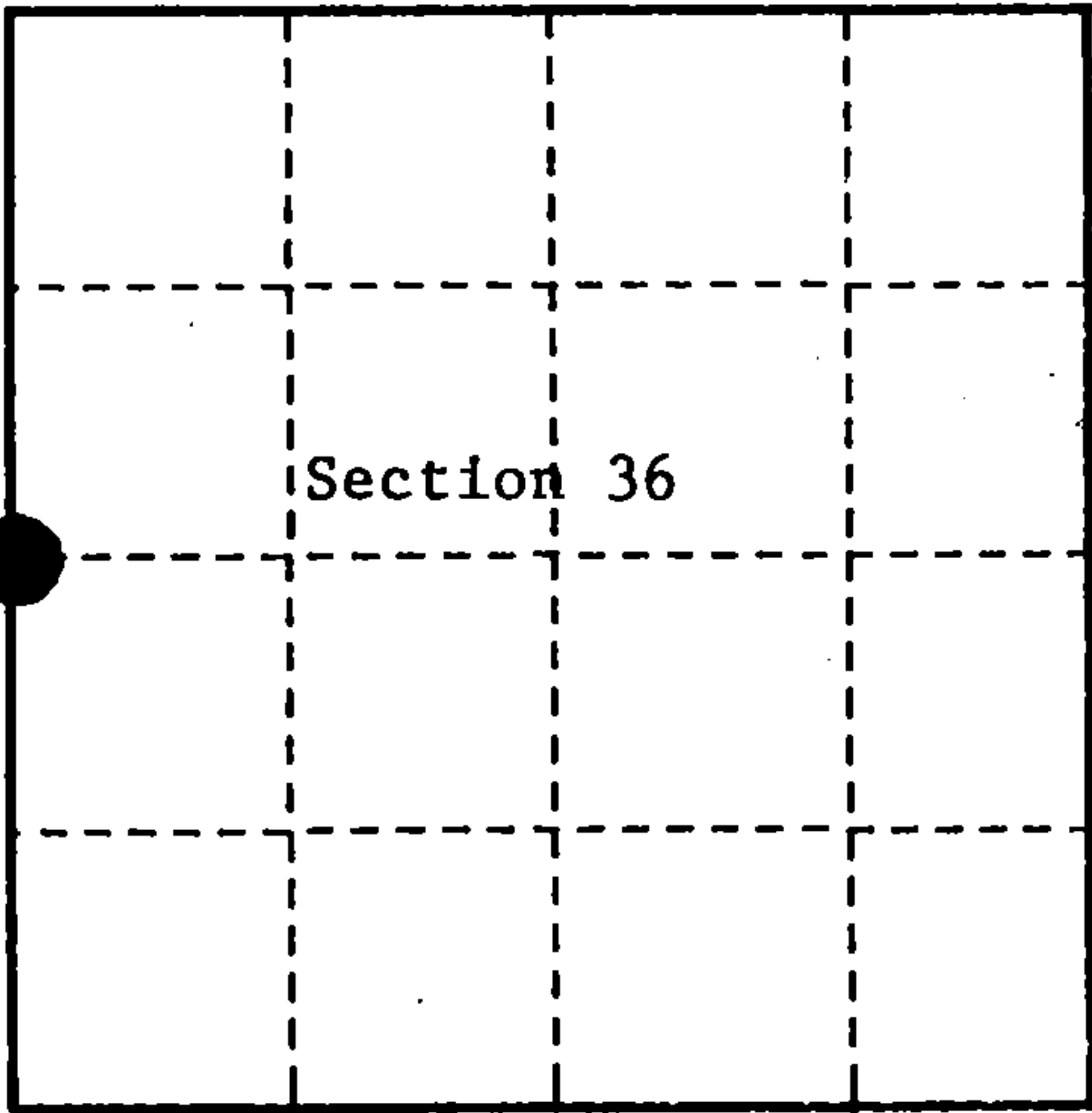
- (a) Identify the corner by reference to the U.S. public land survey system.
O = Corner monument restored.

Quarter Corner to Sections 35 and 36, T.38N., R.13E., Forest County, Wisconsin

State Plane Coordinates:
N - 207859.724
E - 2269588.432

Geographic Coordinates:
N - 45-43-50.062
W - 88-49-15.314

REGISTER'S OFFICE
Forest County, Wis.
Received for record this 21st day
of March A.D., 2001 at
9:30 o'clock A.M. and recorded
in Vol. Corner Restoration
page X-21
Kay Swanson, Deputy
Register of Deeds



- (b) Describe any record evidence, monument evidence, occupational evidence, testimonial evidence or any other material evidence you considered, and whether the monument was found or placed.

Original Government survey in 1865, By H. & J.L. Nowlin. Set wood post and the following bearing trees; Tamarac, 8", N.31°E., 30 links, Tamarac, 7", S.53°W., 35 links.

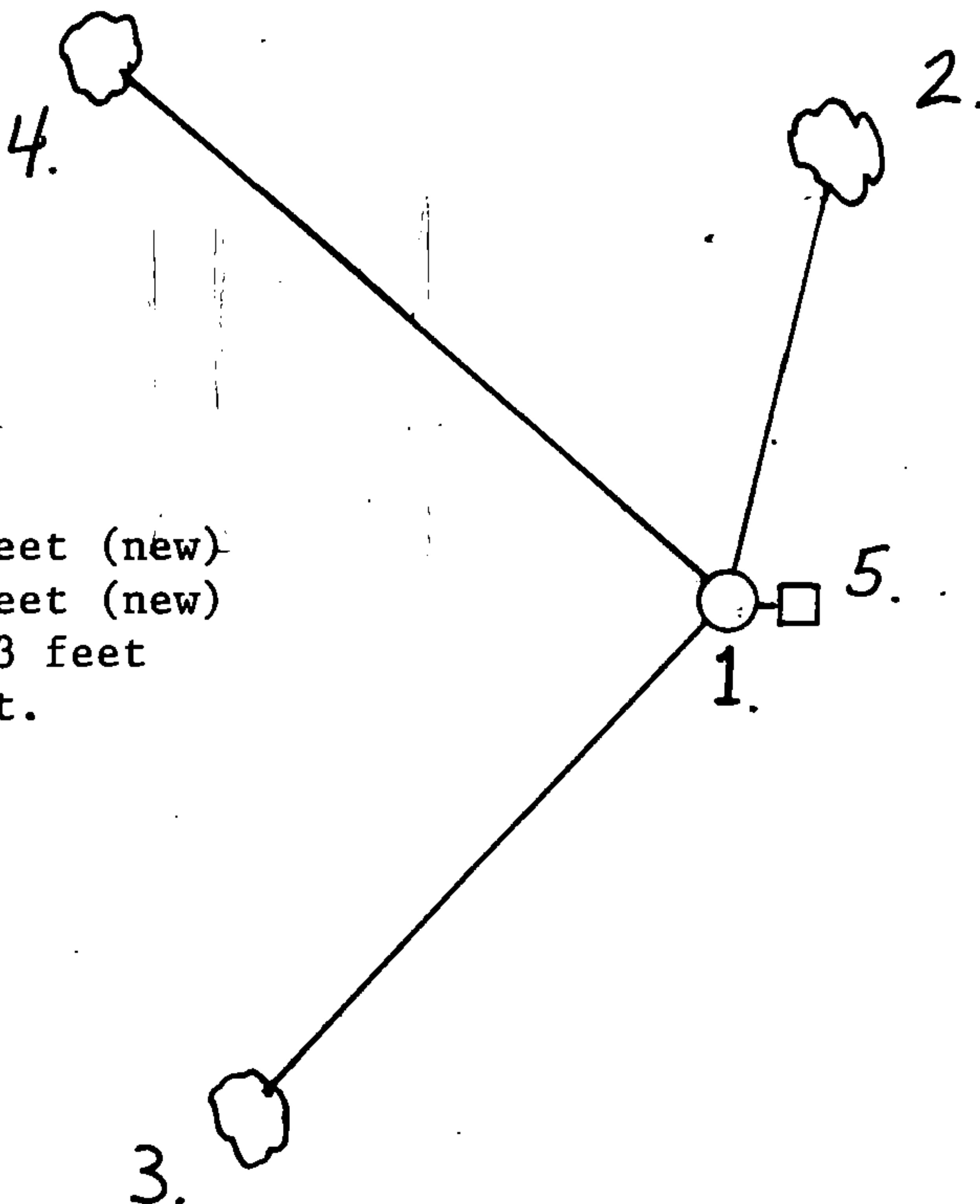
In 1984, Milo Stefan, RLS with the U.S. Forest Service, found a wood post similar to wood posts at the one-sixteenth corners North and South. There is no record of survey for these posts so Stefan reestablishes the corner position by lost corner proportionate methods. At proportionate position set a 2 inch diameter aluminum monument, 5 feet long, with an aluminum cap stamped; T.38N., R.13E., 1/4, S35,S36, 1984, RLS 1558. Blazed and scribed the following; Tamarack, 5", N.53°E., 21.33 ft., Tamarack, 8", S.52°W., 11.38 ft., Black Spruce, 5", N.51°W., 44.03 ft., Steel Sign Post, East, 1.00 ft.

On 10-20-97, Alan Harrison, RLS with the U.S. Forest Service, found monument and accessories as set by Stefan in 1984. Cut down NE and SW bearing trees for GPS observations. Made 2 new bearing trees as noted below.

- (c) In the plan view drawing below, provide reference ties to at least 4 witness monuments, or, if the location is within a municipality, to at least 2 witness monuments. (witness monuments shall be made of concrete, natural stone, iron or other equally durable material.)

- (d) Show a plan view drawing depicting the relevant monuments and reference ties which is sufficient in detail to enable accurate relocation of the corner monument if the corner monument is disturbed. Indicate north.

- 1.) 2" x 60" aluminum monument stamped to identify corner
- 2.) Tamarack, 13", N.10°E., 25.20 feet (new)
- 3.) Tamarack, 11", S.40°W., 39.88 feet (new)
- 4.) Black Spruce, 8", N.51°W., 44.03 feet
- 5.) Steel Sign Post, East, 1.00 feet.



- (e) Describe any material discrepancy between the location of the corner as restored or reestablished and the location of that corner as previously restored or reestablished by distance and direction. Show the discrepancy on the plan view drawing under (d), above. Show the distances between the corner as previously restored or reestablished and (1) the corner as restored or reestablished, and (2) to at least 2 of the witness monuments shown on the drawing in (d), above.

None

- (f) Was the corner restored through acceptance of (1) an obliterated evidence location, or, (2) a found perpetuated location?

2.) Found Perpetuated Location

- (g & h) Was the corner reestablished through lost corner proportionate methods? If so, show the method, including the directions and distances to other public land survey corners used as evidence or used for proportioning in determining the corner location?

No

(1) I, Alan D. Harrison

(type or print name) certify that the corner location shown on this record was determined by me or under my direction and control and that this U.S. Public Land Survey Monument Record is correct and complete to the best of my knowledge and belief.

Signature

Date

CERTIFICATE READY FOR FILING:

District Ranger

