

Stock No. 26273

160521

## U.S. PUBLIC LAND SURVEY MONUMENT RECORD

Index No. G-9.....

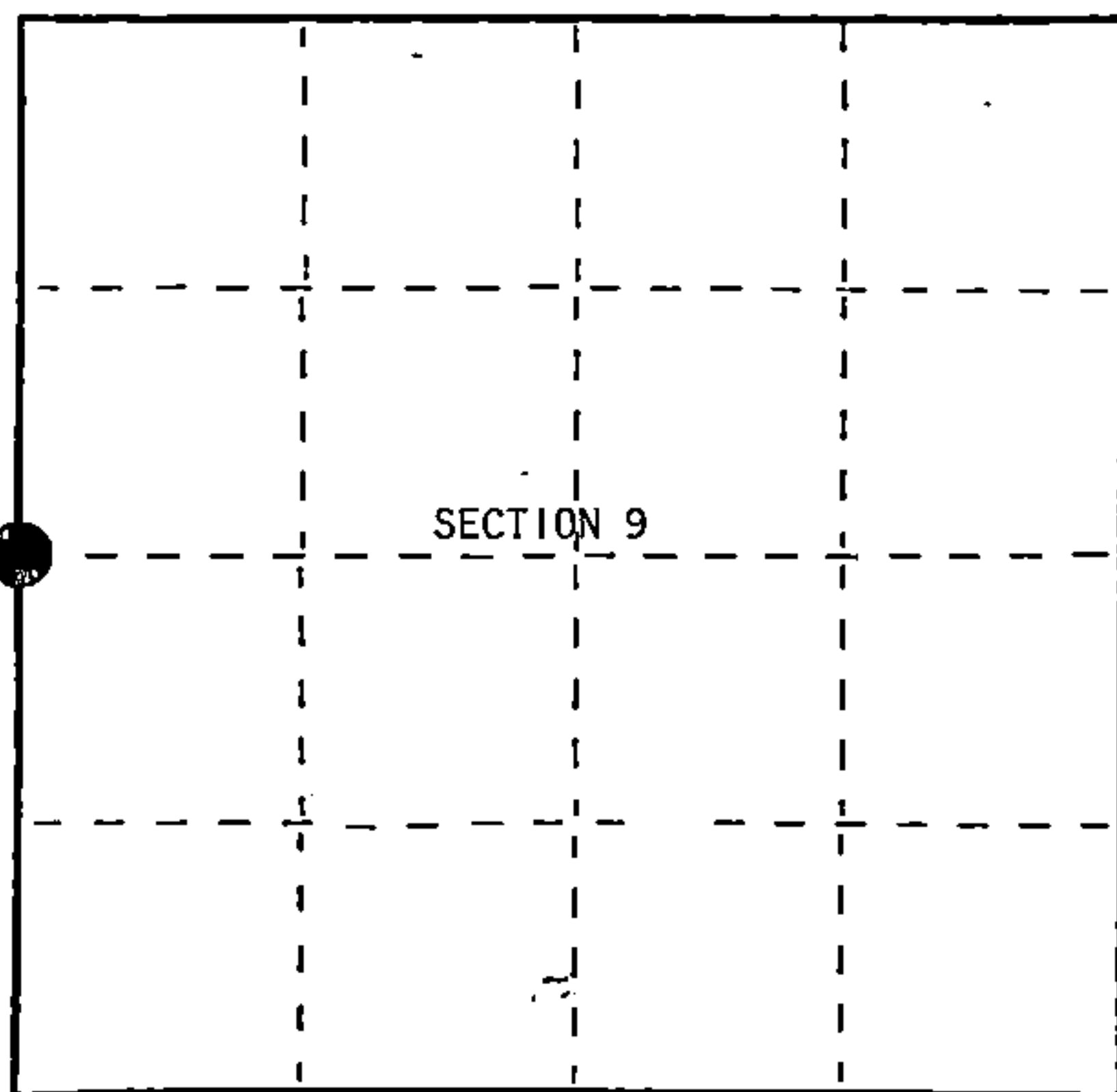
State of Wisconsin

County of Forest

ss.

I, James H. Moore, do hereby  
 certify that on the 12th day  
 of June, 1996, I found  
 evidence of the West Quarter  
 corner of Section 9  
 Township 38, North, Range  
14 East, Fourth Principal Meridian,  
 as described hereon; and that from this evidence  
 I established a new monument and accessories  
 as described hereon to perpetuate the original  
 location of this corner.

Resident witnesses:

Stuart PetersonSteve Applekamp

○ = Corner monument restored.

## History of original corner establishment:

Original government survey in 1865 by James L. Nowlin. North between Section 8 and 9, 40.00 chains,  
 set  $\frac{1}{4}$  post. Original bearing trees:

Sugar	12"	N53°W	27 lks
Sugar	10"	S41°E	13 lks

1913 Melindy - south from northwest corner, Section 9, 39.69 chains, 35.75 lks. east, found 3" x 3"  
 cedar post. Made 1 new bearing tree:

Maple	8"	S3 $\frac{1}{4}$ °W	14 lks
-------	----	---------------------	--------

## Description of corner evidence found:

No original corner evidence found. No subsequent corner evidence found. I re-established the  
 corner position on line between the northwest and southwest corners of Section 9 and at  
 proportionate measure from Melindy's 1913 chainage.

## Description of monument and accessories I established to perpetuate the original location of this corner.

At the corner position, I set a 2 $\frac{1}{2}$ " x 36" aluminum pipe monument with aluminum cap stamped:  
 T38N, R14E,  $\frac{1}{4}$  cor, S8, S9, 1996, S-1641. Blazed and scribed the following bearing trees:

Sugar	11"	S80°E	54.99 feet
Sugar	7"	S01°W	52.26 feet
Sugar	8"	N77°W	8.81 feet
Sugar	9"	N25°W	33.22 feet
Steel Sign Post		NE	1.26 feet

Dated at Hiles, Wis., this 6th day of January, 1997

Signature James H. Moore Title Land Surveyor Registration No. S-1641  
 (County Surveyor, Registered Land Surveyor, or other duly authorized official)

Office of Register of Deeds, County of Forest, I hereby certify that the within  
 instrument was filed in this office for record on the 17th day of December, 1997  
 at 9:27 o'clock A M.

(Register of Deeds)

By Paul T. Tinkering Deputy

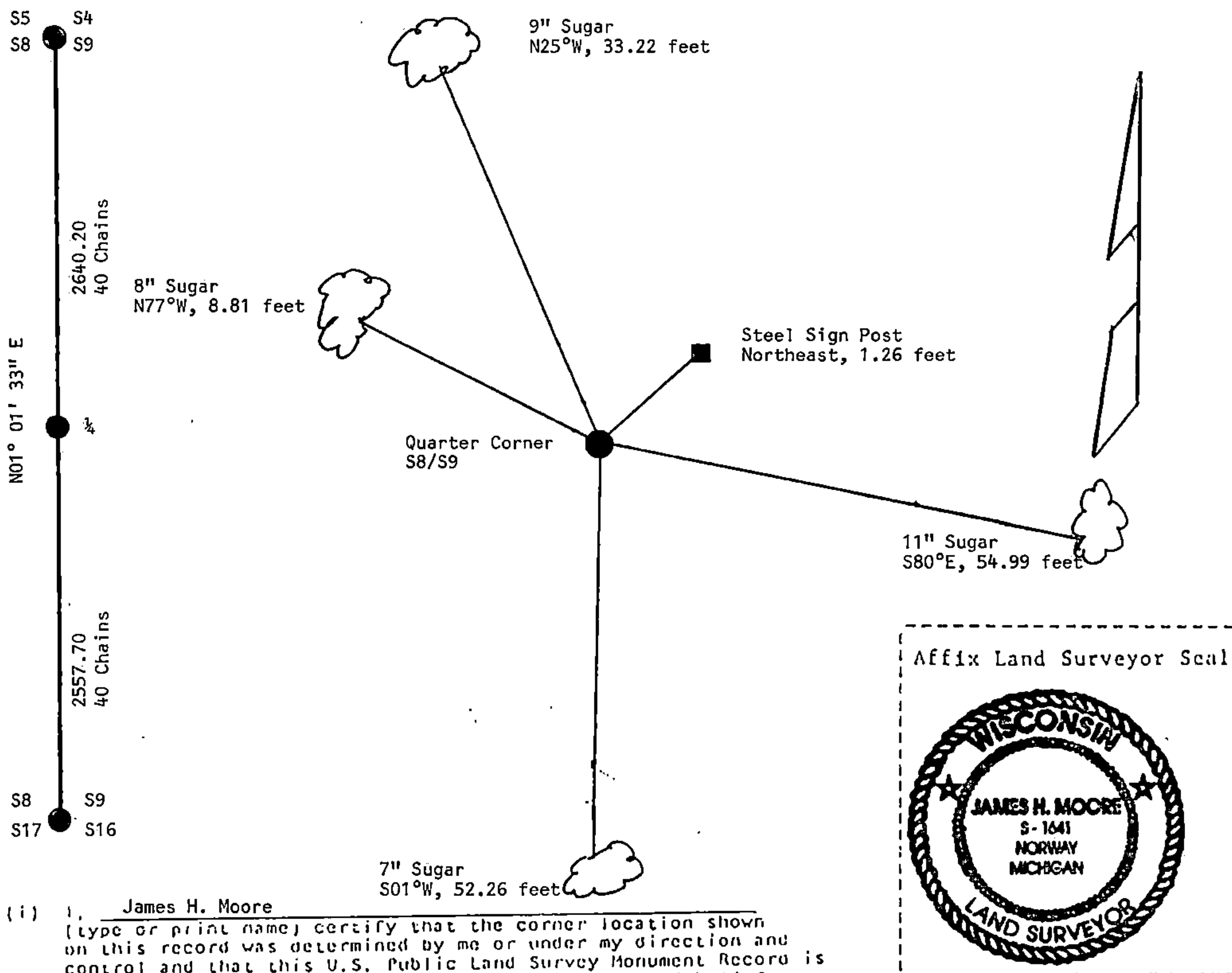
43814082000

(e) Describe any material discrepancy between the location of the corner as restored or reestablished and the location of that corner as previously restored or reestablished by distance and direction. Show the discrepancy on the plan view drawing under (d), above. Show the distances between the corner as previously restored or reestablished and (1) the corner as restored or reestablished, and (2) to at least 2 of the witness monuments shown on the drawing in (d), above.

See sketch below.

(f) Was the corner restored through acceptance of (1) an obliterated evidence location, or, (2) a found perpetuated location?

(g&h) Was the corner reestablished through lost corner proportionate methods? If so, show the method, including the directions and distances to other public land survey corners used as evidence or used for proportioning in determining the corner location?



(i) I, James H. Moore  
(type or print name) certify that the corner location shown  
on this record was determined by me or under my direction and  
control and that this U.S. Public Land Survey Monument Record is  
correct and complete to the best of my knowledge and belief.

Signature

January 6, 1997

Date