

U.S. PUBLIC LAND SURVEY MONUMENT RECORD

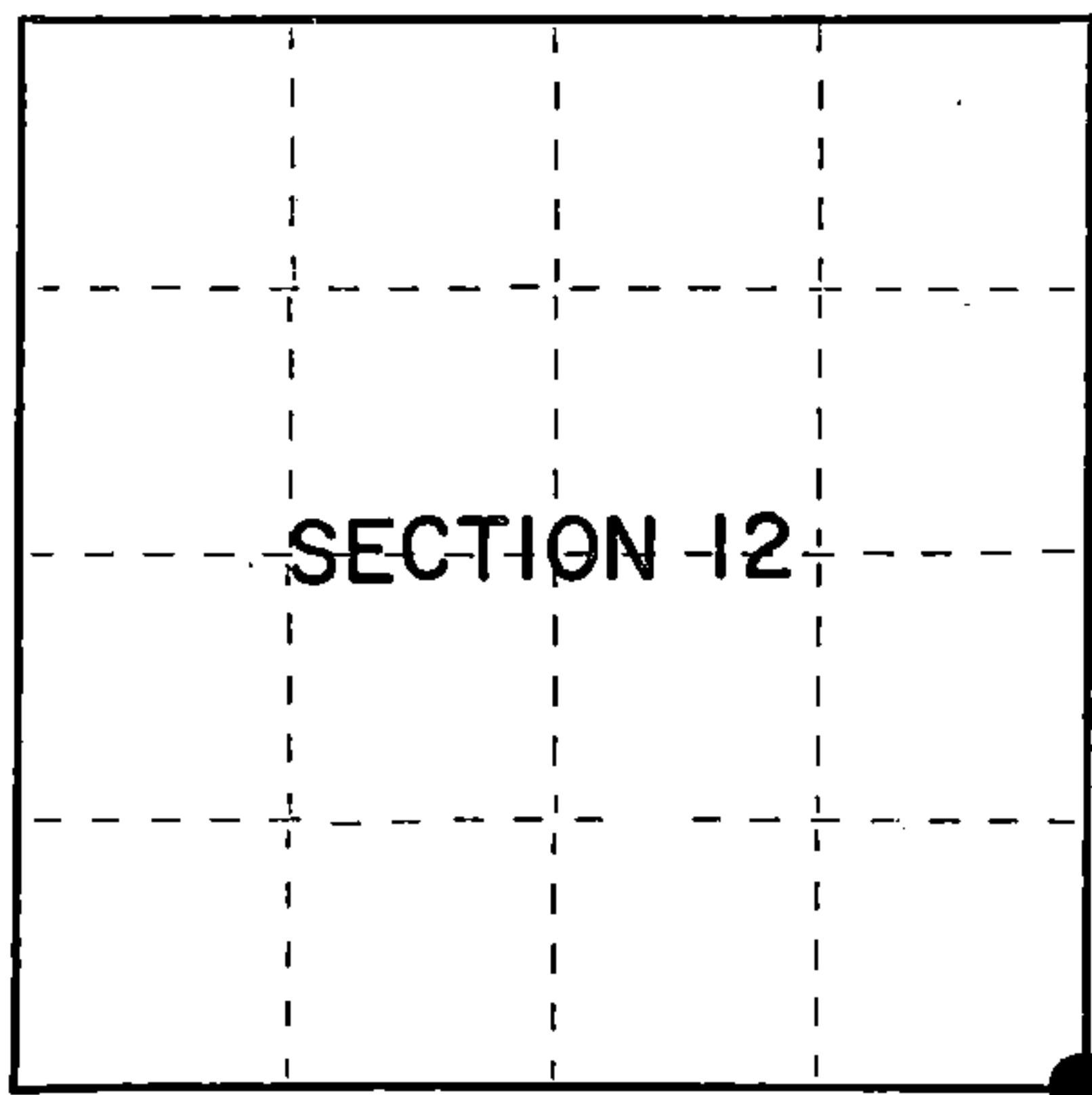
Index No. J-25

State of Wisconsin }  
County of Forest } ss.

I, William B. Cochrane, do hereby  
certify that on the 27th day  
of September, 1983, I found  
evidence of the Southeast Section  
corner of Section 12  
Township 38, North, Range  
14 East, Fourth Principal Meridian,  
as described hereon; and that from this evidence  
I established a new monument and accessories  
as described hereon to perpetuate the original  
location of this corner.

Resident witnesses:

Tony Tillman



○ = Corner monument restored.

History of original corner establishment:

Original Government Survey in 1857 by Artemas Curtis. North between Sections  
13 and 18, 80.00 chains, set Section Corner post to Sections 7, 12, 13, and 18,  
from which the following bear:

Fir	8"	S37°W	33 lks.
Fir	10"	N85°W	26 lks.
Fir	8"	N56°E	40 lks.
Fir	12"	S63°E	45 lks.

Description of corner evidence found:

No original corner evidence was recovered.

The corner position was restored at proportionate distance and on line between  
the Northeast Section Corner of Section 12, and the Southeast Section Corner of  
Section 13.

Description of monument and accessories I established to perpetuate the original location of this corner.

At the restored corner position, set a 2½" diameter aluminum pipe monument, 3 feet  
long, 30 inches in the ground, with an aluminum cap stamped: T38N, R14E, R15E,  
S7, S12, S13, S18, 1983, S-1107. From which the following new blazed and scribed  
bearing trees bear:

Aspen	13"	N72°E	22.23 feet
Spruce	13"	S14°E	57.95 feet
Birch	8"	N77°W	23.00 feet
Steel Sign Post		SW	0.50 feet

Dated at Hiles, Wis., this 3rd day of April, 1985

Signature: William B. Cochrane Title: Land Surveyor Registration No. S-1107  
(County Surveyor, Registered Land Surveyor, or other duly authorized official)

Office of Register of Deeds, County of Forest, I hereby certify that the within  
instrument was filed in this office for record on the 24th day of April, 1985  
at 1:00 o'clock P. M.

Paul Aschenbrenner  
(Register of Deeds)

By Deputy

FORM NO. 985-A  
H.C. Miller Company  
MILWAUKEE, WISCONSIN

Stock No. 26273

Document Number 127896

4381412-0000

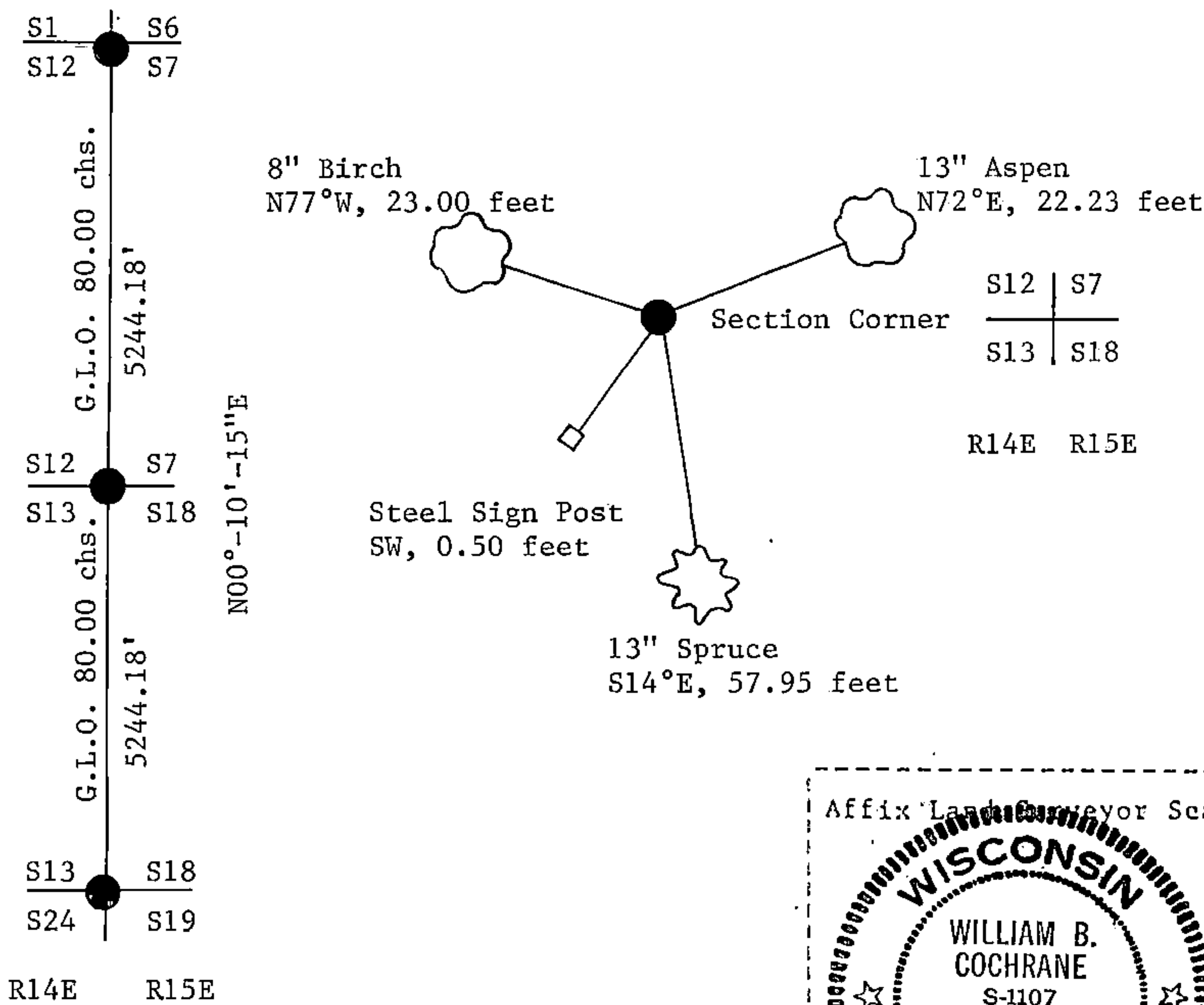
(e) Describe any material discrepancy between the location of the corner as restored or reestablished and the location of that corner as previously restored or reestablished by distance and direction. Show the discrepancy on the plan view drawing under (d), above. Show the distances between the corner as previously restored or reestablished and (1) the corner as restored or reestablished, and (2) to at least 2 of the witness monuments shown on the drawing in (d), above.

See drawing below.

(f) Was the corner restored through acceptance of (1) an obliterated evidence location, or, (2) a found perpetuated location?

Restored through lost corner proportionate methods.

(g&h) Was the corner reestablished through lost corner proportionate methods? If so, show the method, including the directions and distances to other public land survey corners used as evidence or used for proportioning in determining the corner location?



(i) I, William B. Cochrane  
(type or print name) certify that the corner location shown on this record was determined by me or under my direction and control and that this U.S. Public Land Survey Monument Record is correct and complete to the best of my knowledge and belief.

William B. Cochrane      April 3, 1985  
Signature      Date

