

U.S. PUBLIC LAND SURVEY MONUMENT RECORD

Index No. **L-25**

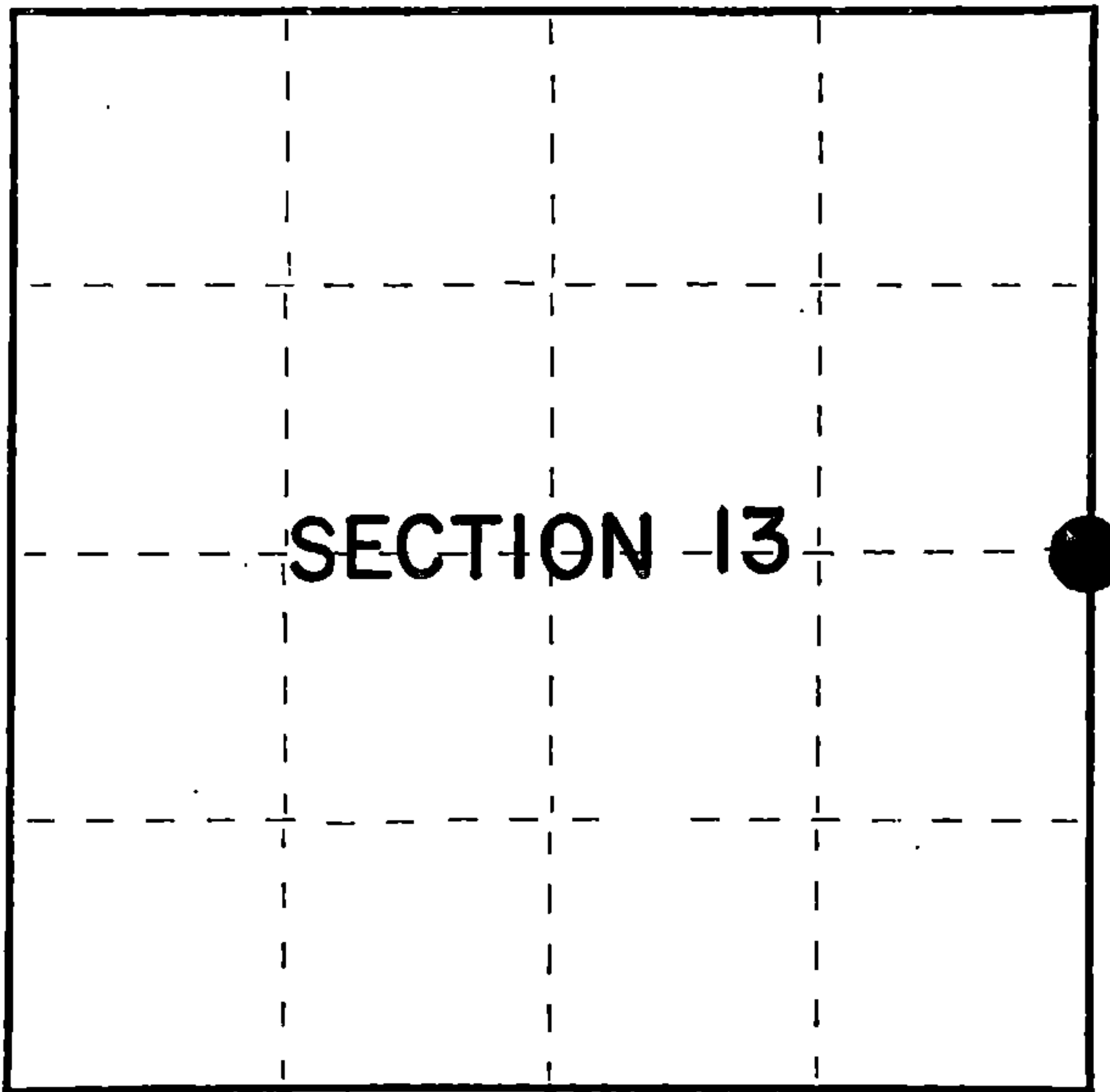
State of Wisconsin }
County of Forest } ss.

I William B. Cochran, do hereby
certify that on the 18th day
of January, 1983, I found
evidence of the East Quarter
corner of Section 13
Township 38, North, Range
14 East, Fourth Principal Meridian,
as described hereon; and that from this evidence
I established a new monument and accessories
as described hereon to perpetuate the original
location of this corner.

Resident witnesses:

David Brownell

Tony Tillman



○ = Corner monument restored.

History of original corner establishment:

Original Government Survey in 1857 by Artemas Curtis. North between Sections 13 and 18,
40.00 chains, set Quarter Corner post to Sections 13 and 18, from which the
following bear:

Y. Birch	14"	S55°W	33 lks.
Y. Birch	16"	N44°E	33 lks.

Description of corner evidence found:

No original Corner evidence was recovered.

The corner position was restored at proportionate distance and on line between the
Northeast and Southeast Section Corners of Section 13.

Description of monument and accessories I established to perpetuate the original location of this corner.
At the restored corner position, set a 2½" diameter aluminum pipe monument, 3 feet long,
30 inches in the ground, with an aluminum cap stamped: T38N, R14E, R15E, 1/4, S13,
S18, 1983, S-1107. From which the following new blazed and scribed bearing trees bear:

Power Pole#N72-3767	N88°E	42.01 feet	
Balsam	4"	S26°E	63.49 feet
R. Pine	12"	S83°W	45.25 feet

Dated at Hiles, Wis., this 2nd day of April, 1985

Signature William B. Cochran Title Land Surveyor Registration No. S-1107
(County Surveyor, Registered Land Surveyor, or other duly authorized official)

Office of Register of Deeds, County of Forest, I hereby certify that the within
instrument was filed in this office for record on the 24th day of April, 1985
at 1:00 o'clock P. M.

Paul Aschenbrenner
(Register of Deeds)

By _____ Deputy

FORM NO. 985-A

H.C. Miller Company
SURVEYING INSTRUMENTS

Stock No. 26273

Document Number 127897

43814132000

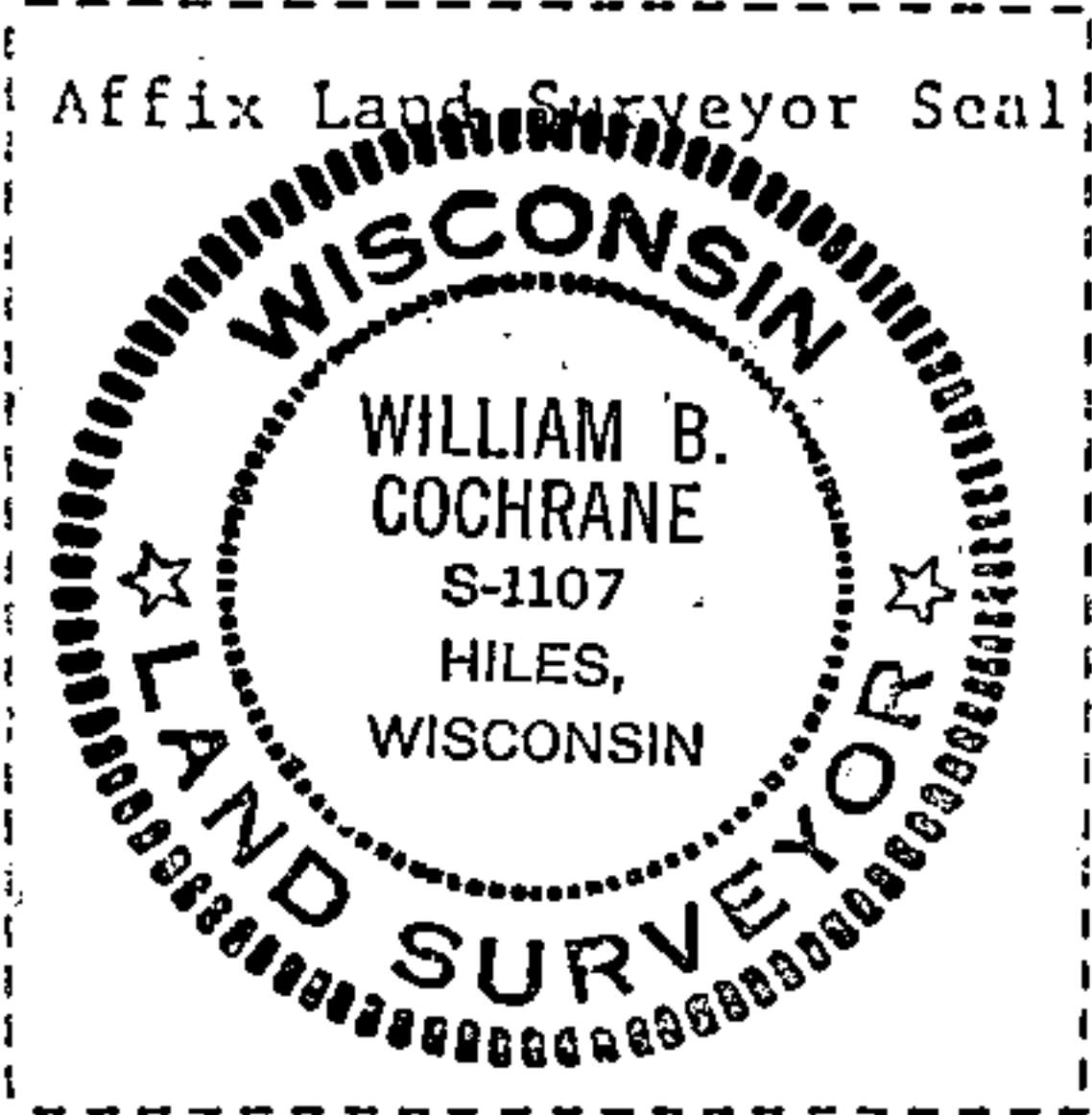
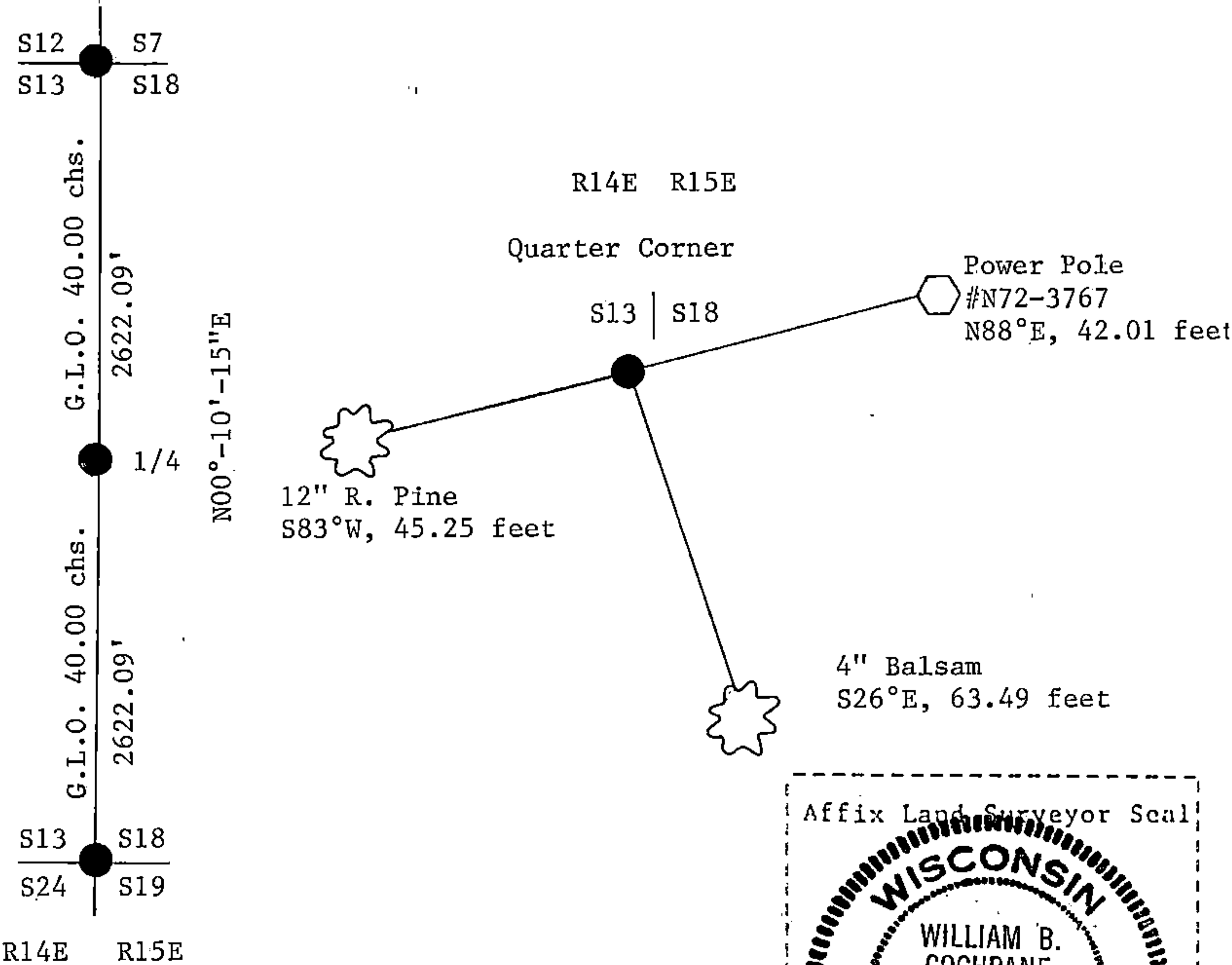
(e) Describe any material discrepancy between the location of the corner as restored or reestablished and the location of that corner as previously restored or reestablished by distance and direction. Show the discrepancy on the plan view drawing under (d), above. Show the distances between the corner as previously restored or reestablished and (1) the corner as restored or reestablished, and (2) to at least 2 of the witness monuments shown on the drawing in (d), above.

See drawing below.

(f) Was the corner restored through acceptance of (1) an obliterated evidence location, or, (2) a found perpetuated location?

Restored through lost corner proportionate methods.

(g&h) Was the corner reestablished through lost corner proportionate methods? If so, show the method, including the directions and distances to other public land survey corners used as evidence or used for proportioning in determining the corner location?



(i) I, William B. Cochrane
(type or print name) certify that the corner location shown on this record was determined by me or under my direction and control and that this U.S. Public Land Survey Monument Record is correct and complete to the best of my knowledge and belief.

William B. Cochrane
Signature

April 2, 1985
Date