

CERTIFIED LAND CORNER RESTORATION

State of Wisconsin

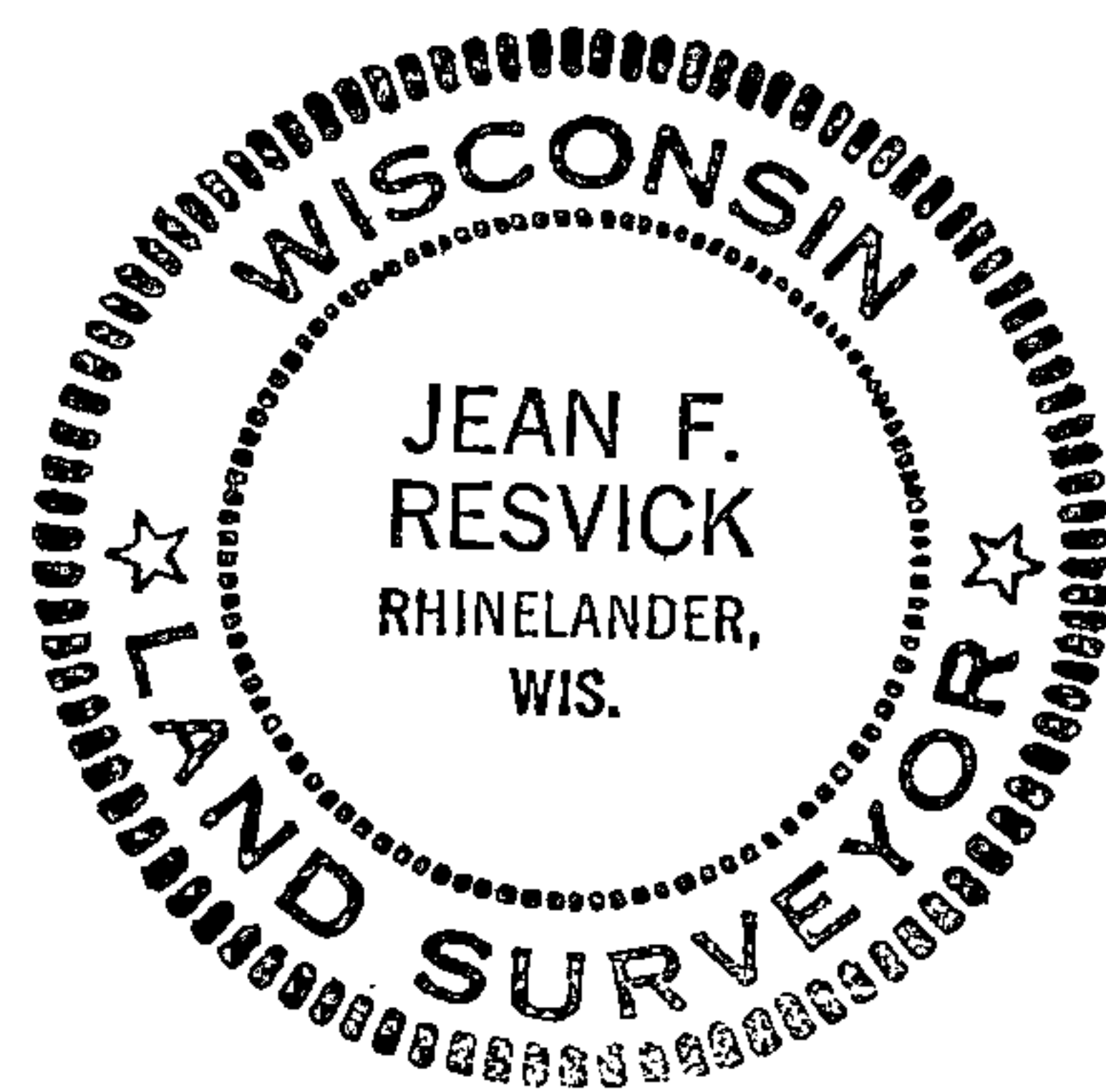
County of Forest

SS.

I, Jean F. Resvick, do hereby certify that on the 26th day of October, 1966, I found evidence of the North Quarter corner of Section 28 Township 38 North, Range 14 East, Fourth Principal Meridian, as described hereon; and that from this evidence I established a new monument and accessories as described hereon to perpetuate the original location of this corner:

Description of original monument and accessories and subsequent restorations:

Surveyed in 1865 by James L. Nowlin.
At 40.30 chains west corrected between Sections 21 and 28.
Set wood post for quarter corner from which
Tamarack 10 inch, N58°W, 14 lks.
Tamarack 8 inch, S72°W, 5 lks.

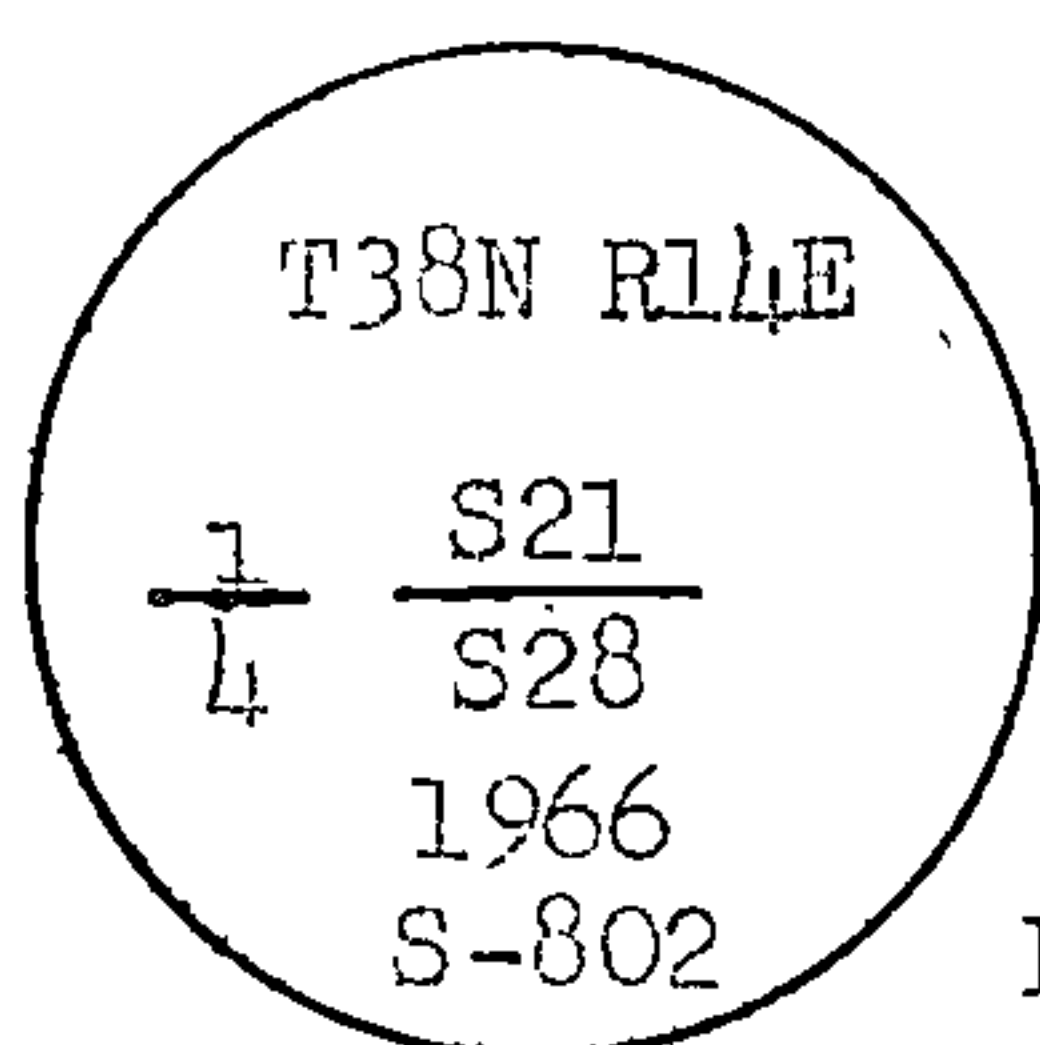


Description of corner evidence found:

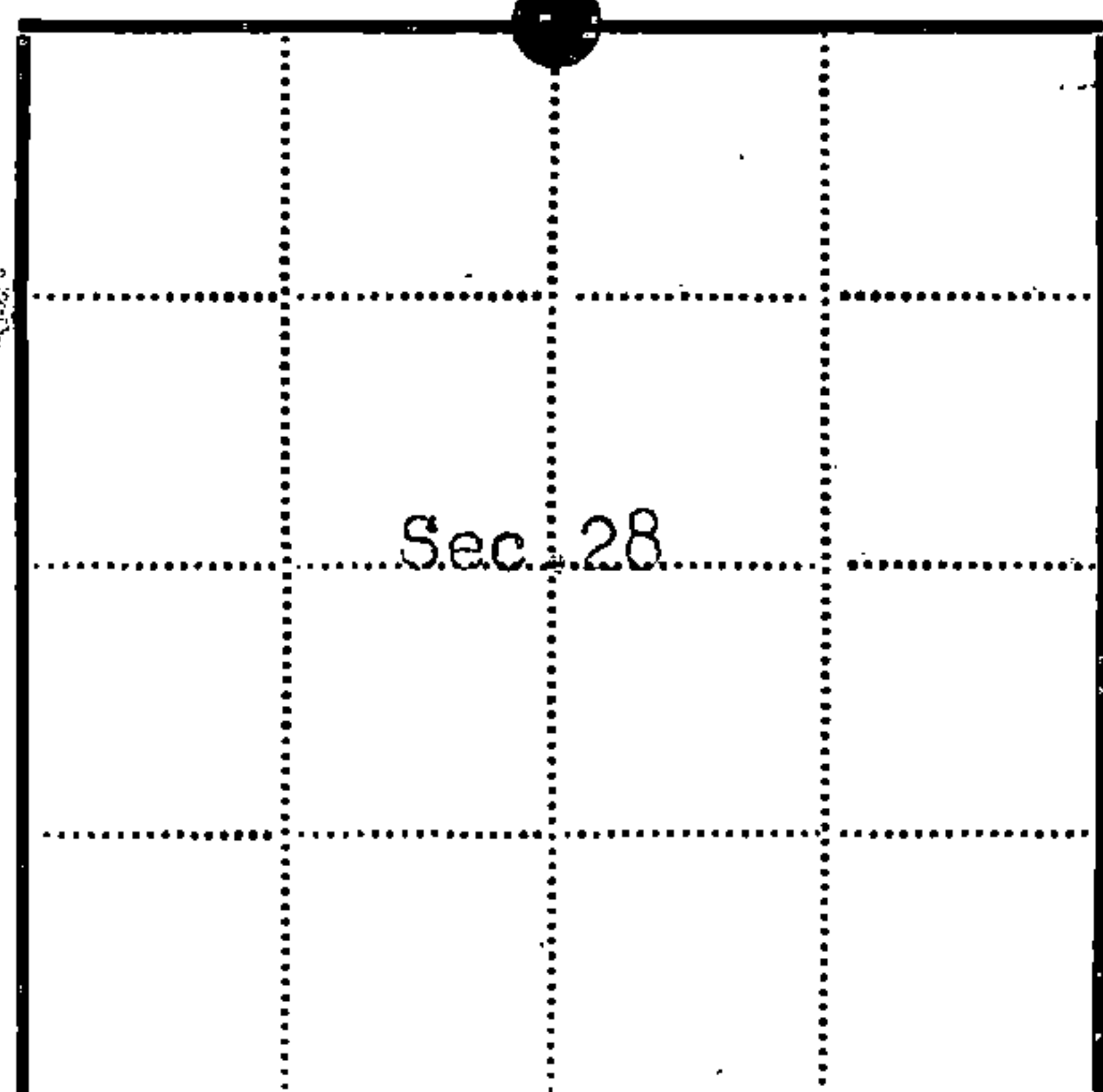
1. Squared cedar post scribed.
2. Forest Service location poster dated 3/25/35 on cedar bears N20°E, 10 ft.
3. S72°W, 3.3 ft. from post tamarack bearing tree stump, scribing readable.

Description of monument and accessories I established to perpetuate the original location of this corner:

Replaced cedar post with a 2 inch inside diameter, galvanized iron pipe, 5 feet long, flanged at bottom, filled with concrete with brass cap marked:



From which the following blazed and scribed new bearing trees bear:
Cedar 8", N62°E, 12.35 ft., 18.71 lks.
Cedar 6", S25°E, 9.27 ft., 14.05 lks.
Cedar 10", S44°W, 5.09 ft., 7.71 lks.
Cedar 5", N39°W, 14.58 ft., 22.09 lks.



● = Corner monument restored

□ =

Resident witnesses.....

Dated at Rhineland Wisconsin, this 6th day of Feb. 19 67.

Signature Jean F. Resvick Title Cadastral Surveyor
(County Surveyor, Registered Land Surveyor, or other duly authorized official)

Surveyors Registration No. S-802DOC. NO. 92682Office of Register of Deeds County of Forest

I hereby certify that the within instrument was filed in this office for record on the 2nd day of March 19 67, and was filed in Book No. 1 Page No. R-11 of County Records.

Signature Eugene Stetson Title Register of Deeds

Township 38 North, Range 14 East, Section 28, Index No. R-11, Page No. 1

43814210020

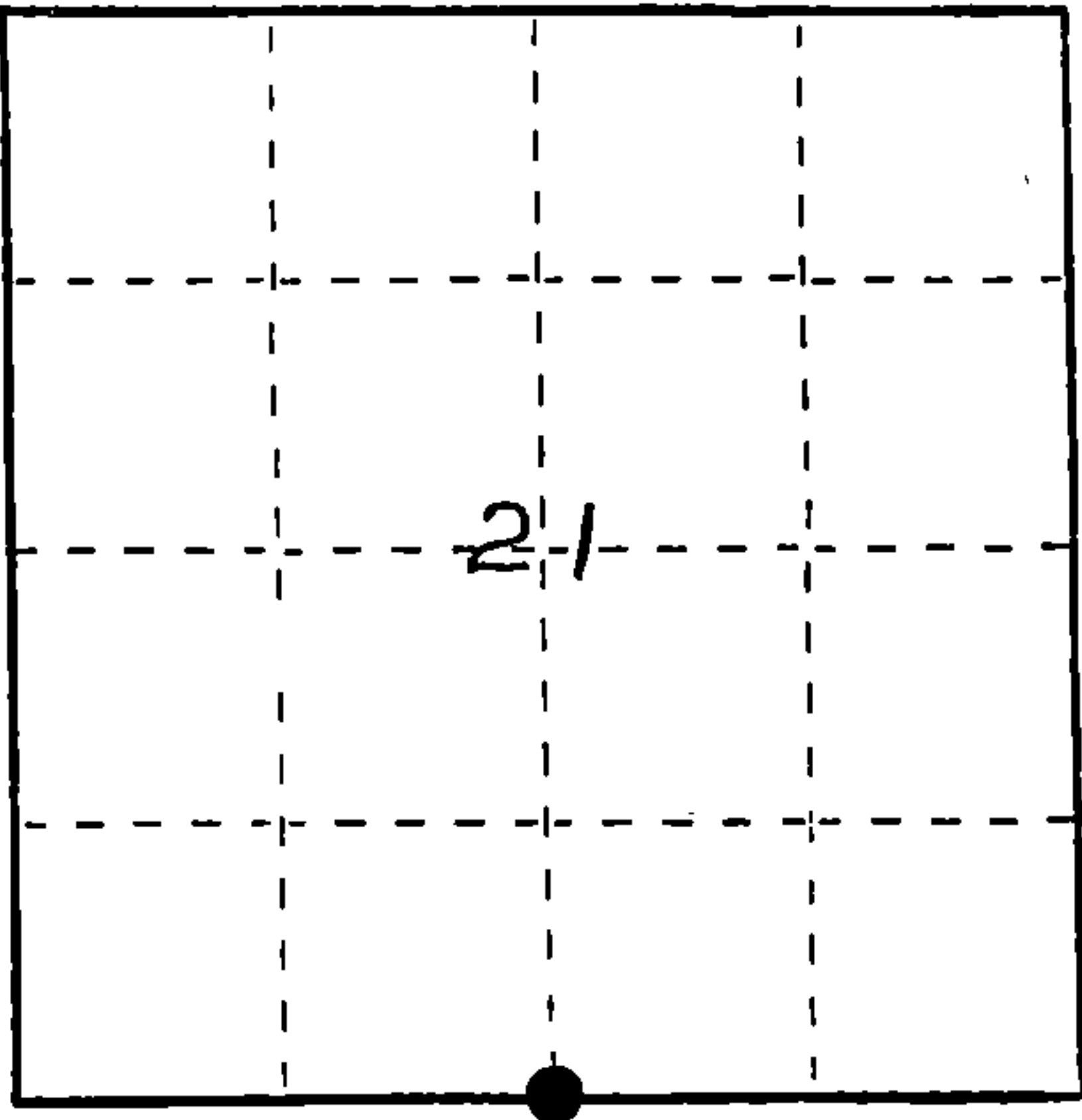
U. S. PUBLIC LAND SURVEY MONUMENT RECORD

INSTRUCTIONS: This record shall show the location of the corner and shall include all of the following nine elements (a through i).

- (a) Identify the corner by reference to the U.S. public land survey system.
O = Corner monument restored.

South One Quarter Corner of
Section 21, T38N, R14E

REGISTER'S OFFICE
Forest County, Wis.
Received for record this 5th day
of November A.D., 1986 at
3:50 o'clock P.M. and recorded
in Vol. CORNER RESTORATIONS
page 11
Paul Archambault
Register of Deeds



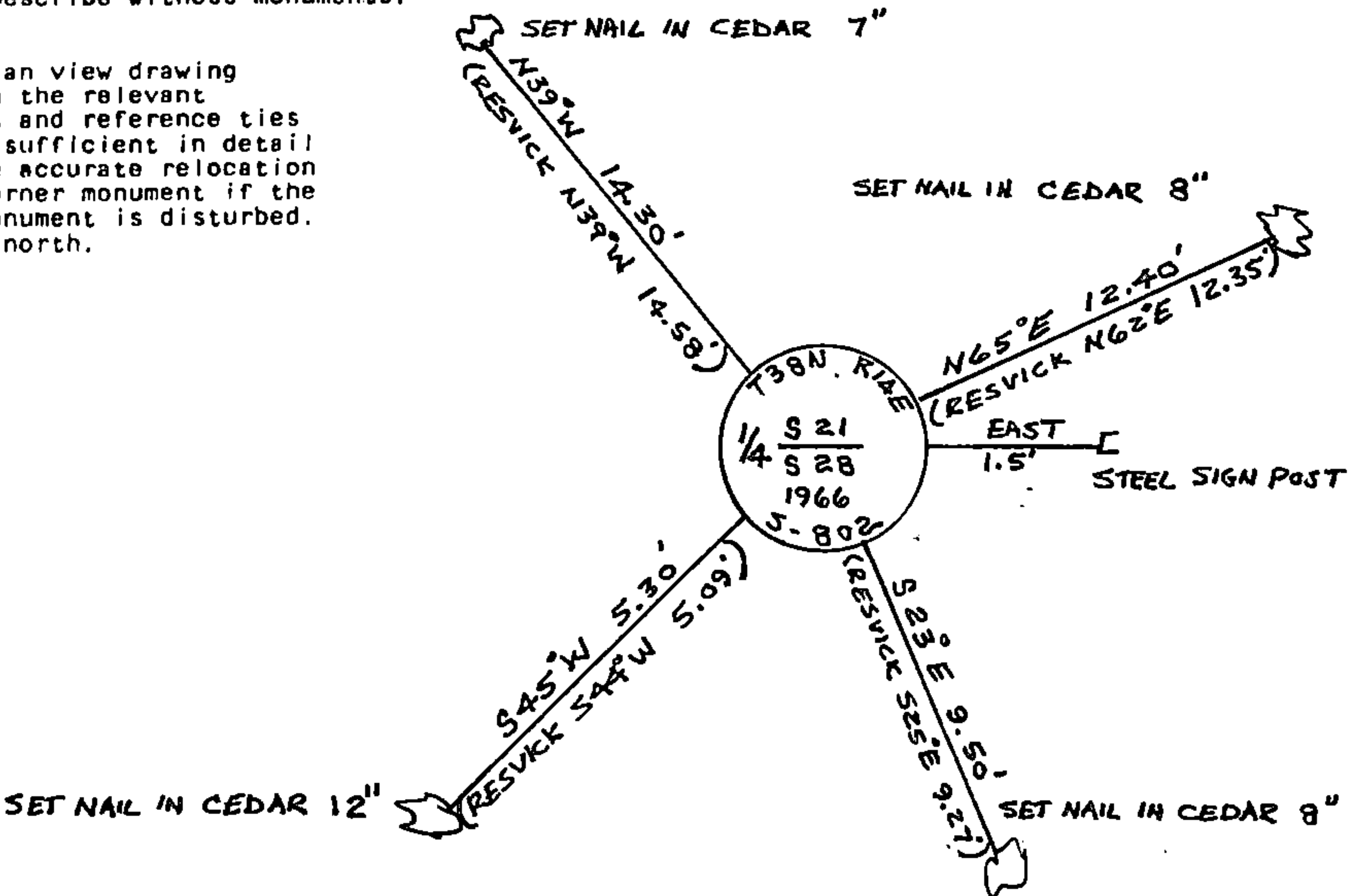
- (b) Describe any record evidence, monument evidence, occupational evidence, testimonial evidence or any other material evidence you considered, and whether the monument was found or placed.
In 1865 James L. Nowlin set wood post with the following BTs: Tamarack, 10", N58°W, 14 links; Tamarack 8", S72°W, 5 links.

Found 2" diameter galvanized iron pipe with 3" diameter brass tablet stamped to identify corner. Corner was restored by Jean V. Resvick in 1967.

Cedar	8"	N62°E	12.35 feet
Cedar	6"	S25°E	9.27 feet
Cedar	10"	S44°W	5.09 feet
Cedar	5"	N39°W	14.58 feet

- (c) In the plan view drawing below, provide reference ties to at least 4 witness monuments, or, if the location is within a municipality, to at least 2 witness monuments. (Witness monuments shall be made of concrete, natural stone, iron or other equally durable material.)
Describe witness monuments.

- (d) Show a plan view drawing depicting the relevant monuments and reference ties which is sufficient in detail to enable accurate relocation of the corner monument if the corner monument is disturbed. Indicate north.



- (e) Describe any material discrepancy between the location of the corner as restored or reestablished and the location of that corner as previously restored or reestablished by distance and direction. Show the discrepancy on the plan view drawing under (d), above. Show the distances between the corner as previously restored or reestablished and (1) the corner as restored or reestablished, and (2) to at least 2 of the witness monuments shown on the drawing in (d), above.

See (D)

- (f) Was the corner restored through acceptance of (1) an obliterated evidence location, or, (2) a found perpetuated location?

Through Acceptance of a found perpetuated location

- (g&h) Was the corner reestablished through lost corner proportionate methods? If so, show the method, including the directions and distances to other public land survey corners used as evidence or used for proportioning in determining the corner location?

NO

- (1) I, John H. Fisher
(type or print name) certify that the corner location shown on this record was determined by me or under my direction and control and that this U.S. Public Land Survey Monument Record is correct and complete to the best of my knowledge and belief.

John H. Fisher
Signature

10/30/86
Date

