

# U.S. PUBLIC LAND SURVEY MONUMENT RECORD

Index No. **V-25**

State of Wisconsin }  
County of Forest } ss.

I William B. Cochrane, do hereby certify that on the 15th day of August, 1983, I found evidence of the Southeast Section corner of Section 25 Township 38, North, Range 14 East, Fourth Principal Meridian, as described hereon; and that from this evidence I established a new monument and accessories as described hereon to perpetuate the original location of this corner.

Resident witnesses:

David Brownell

Tony Tillman

History of original corner establishment:

Original Government Survey in 1857 by Artemas Curtis. North between Sections 31 and 36, 80.00 chains, set Section Corner post to Sections 25, 30, 31, and 36, from which the following bear:

Sugar	14"	S20°W	21 lks.
Sugar	12"	N60°W	30 lks.
Sugar	7"	N41°E	37 lks.
Sugar	8"	S32°E	29 lks.

Description of corner evidence found:

2" diameter iron pipe.

I accept the 2" diameter iron pipe as the best available evidence for restoring the corner position.

No original corner evidence was recovered.

Description of monument and accessories I established to perpetuate the original location of this corner.

In place of 2" diameter iron pipe, set a 2½" diameter aluminum pipe monument, 3 feet long, 30 inches in the ground, with an aluminum cap stamped: T38N, R14E, R15E, S25, S30, S31, S36, 1983, S-1107. From which the following blazed and scribed new bearing trees bear:

Maple	10"	N25°E	21.56 feet
Maple	6"	S74°E	38.52 feet
W. Ash	10"	S59°W	6.70 feet
Steel Sign Post		North	1.00 feet

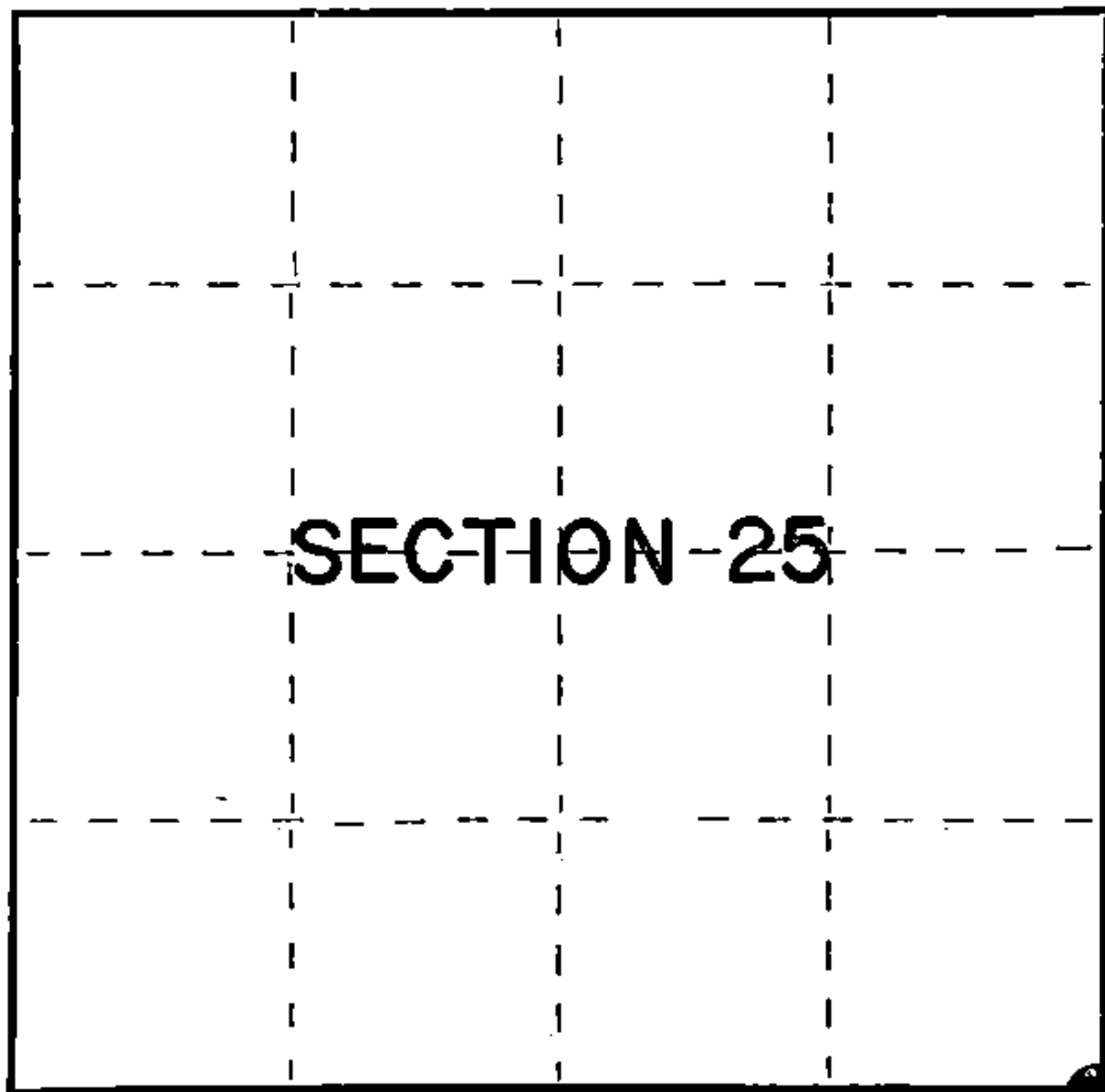
Dated at Hiles, Wis., this 2nd day of April, 1985

Signature William B. Cochrane Title Land Surveyor Registration No. S-1107  
(County Surveyor, Registered Land Surveyor, or other duly authorized official)

Office of Register of Deeds, County of Forest, I hereby certify that the within instrument was filed in this office for record on the 24th day of April, 1985 at 1:00 o'clock P. M.

Paul Aschenbrenner  
(Register of Deeds)

By \_\_\_\_\_ Deputy



○ = Corner monument restored.

FORM NO. 985-A

H.C. Miller Company  
MILWAUKEE, WISCONSIN

Stock No. 26273

Document Number **127909**

43814250000

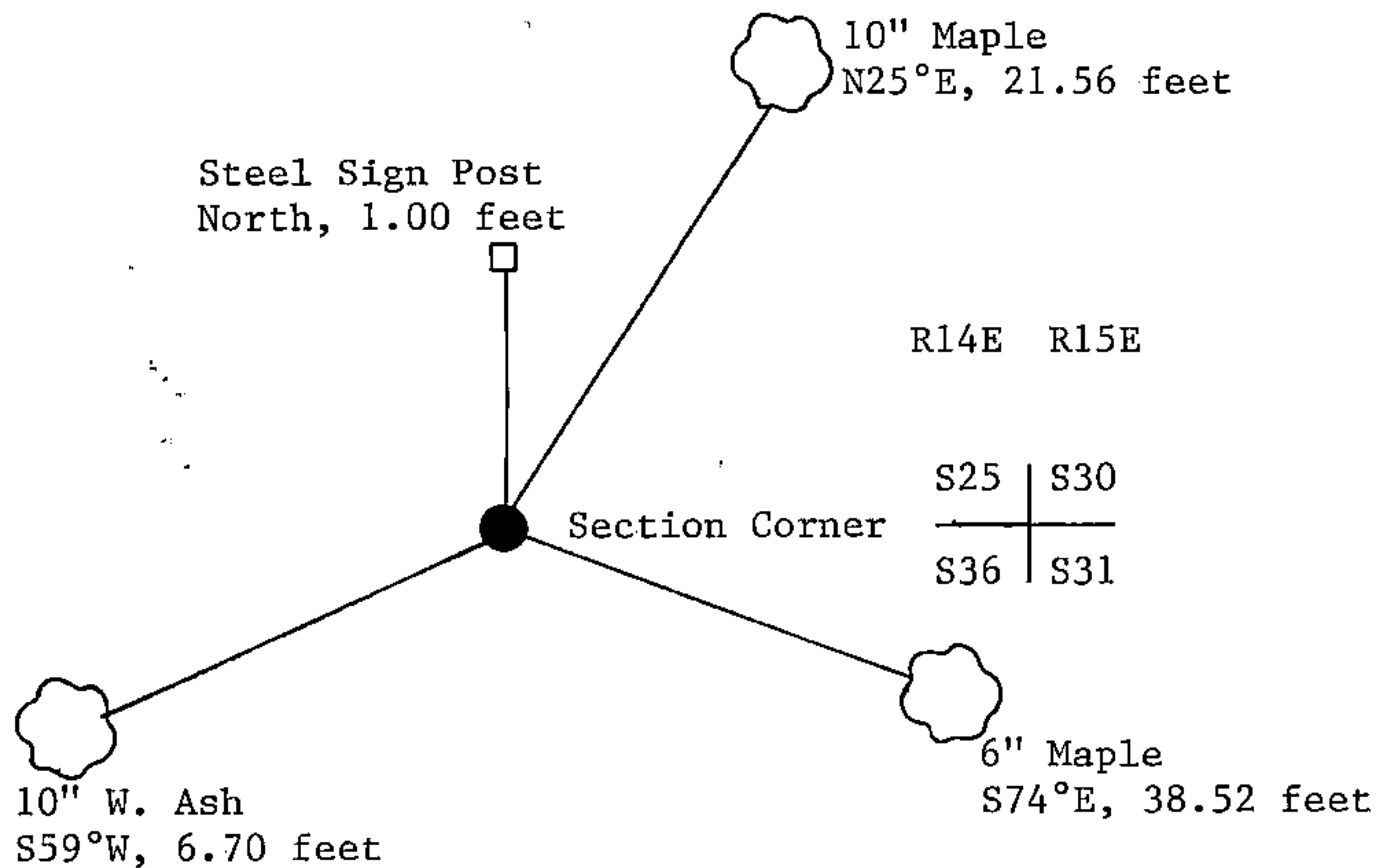
- (e) Describe any material discrepancy between the location of the corner as restored or reestablished and the location of that corner as previously restored or reestablished by distance and direction. Show the discrepancy on the plan view drawing under (d), above. Show the distances between the corner as previously restored or reestablished and (1) the corner as restored or reestablished, and (2) to at least 2 of the witness monuments shown on the drawing in (d), above.

See drawing below.

- (r) Was the corner restored through acceptance of (1) an obliterated evidence location, or, (2) a found perpetuated location?

Restored from accepted evidence.

- (g&h) Was the corner reestablished through lost corner proportionate methods? If so, show the method, including the directions and distances to other public land survey corners used as evidence or used for proportioning in determining the corner location?



William B. Cochrane

- (i) I, William B. Cochrane  
(type or print name) certify that the corner location shown  
on this record was determined by me or under my direction and  
control and that this U.S. Public Land Survey Monument Record is  
correct and complete to the best of my knowledge and belief.

William B. Cochrane  
Signature

April 2, 1985  
Date

