

U.S. PUBLIC LAND SURVEY MONUMENT RECORD

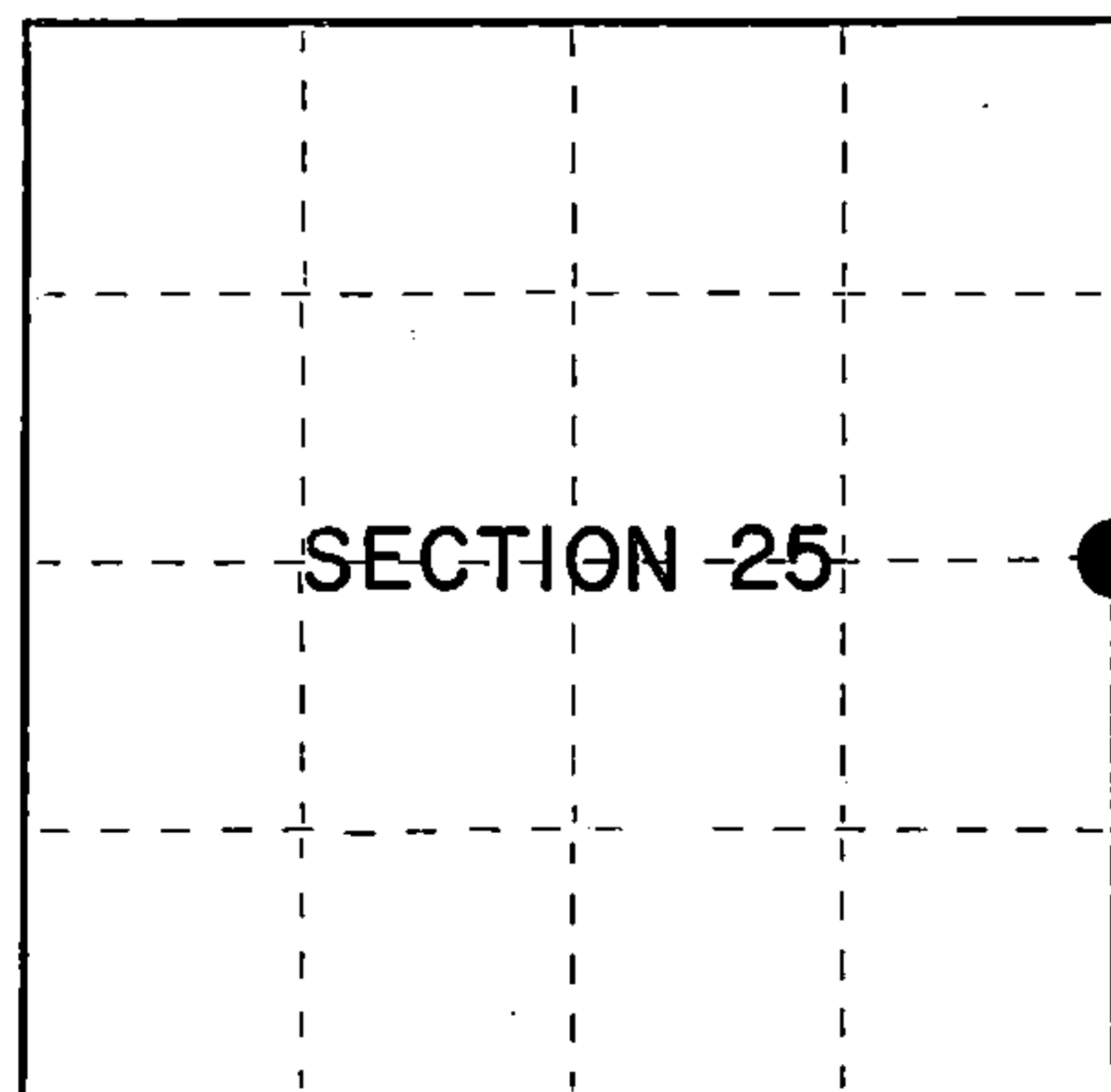
Index No. **T-25**

State of Wisconsin }
County of Forest } ss.

I William B. Cochrane, do hereby
certify that on the 23rd day
of August, 19 83, I found
evidence of the East Quarter
corner of Section 25
Township 38, North, Range
14 East, Fourth Principal Meridian,
as described hereon; and that from this evidence
I established a new monument and accessories
as described hereon to perpetuate the original
location of this corner.

Resident witnesses:

Tony Tillman



○ = Corner monument restored.

History of original corner establishment:

Original Government Survey in 1857 by Artemas Curtis. North between Sections 25 and 30,
40.00 chains, set Quarter Corner post to Sections 25 and 30, from which the following
bear:

Sugar	14"	N40°W	14 lks.
Ironwood	8"	S75°E	20 lks.

Description of corner evidence found:

2" diameter iron pipe, 5 feet long, in a mound of stone.

I accept the iron pipe as the best available evidence for restoring the corner position.

No original corner evidence was recovered.

Description of monument and accessories I established to perpetuate the original location of this corner.
In place of 2" diameter iron pipe, set a 2½" diameter aluminum pipe monument, 3 feet
long, 30 inches in the ground, with an aluminum cap stamped: T38N, R14E, R15E, 1/4,
S25, S30, 1983, S-1107. From which the following new blazed and scribed bearing
trees bear:

Maple	8"	N82°E	7.70 feet
Maple	5"	South	23.88 feet
Steel Sign Post		NE	1.00 feet

Dated at Hiles, Wis., this 27th day of March, 19 85

Signature William B. Cochrane Title Land Surveyor Registration No. S-1107
(County Surveyor, Registered Land Surveyor, or other duly authorized official)

Office of Register of Deeds, County of Forest, I hereby certify that the within
instrument was filed in this office for record on the 24th day of April, 1985
at 1:00 o'clock P. M.

Paul Aschenbrenner
(Register of Deeds)

By _____ Deputy

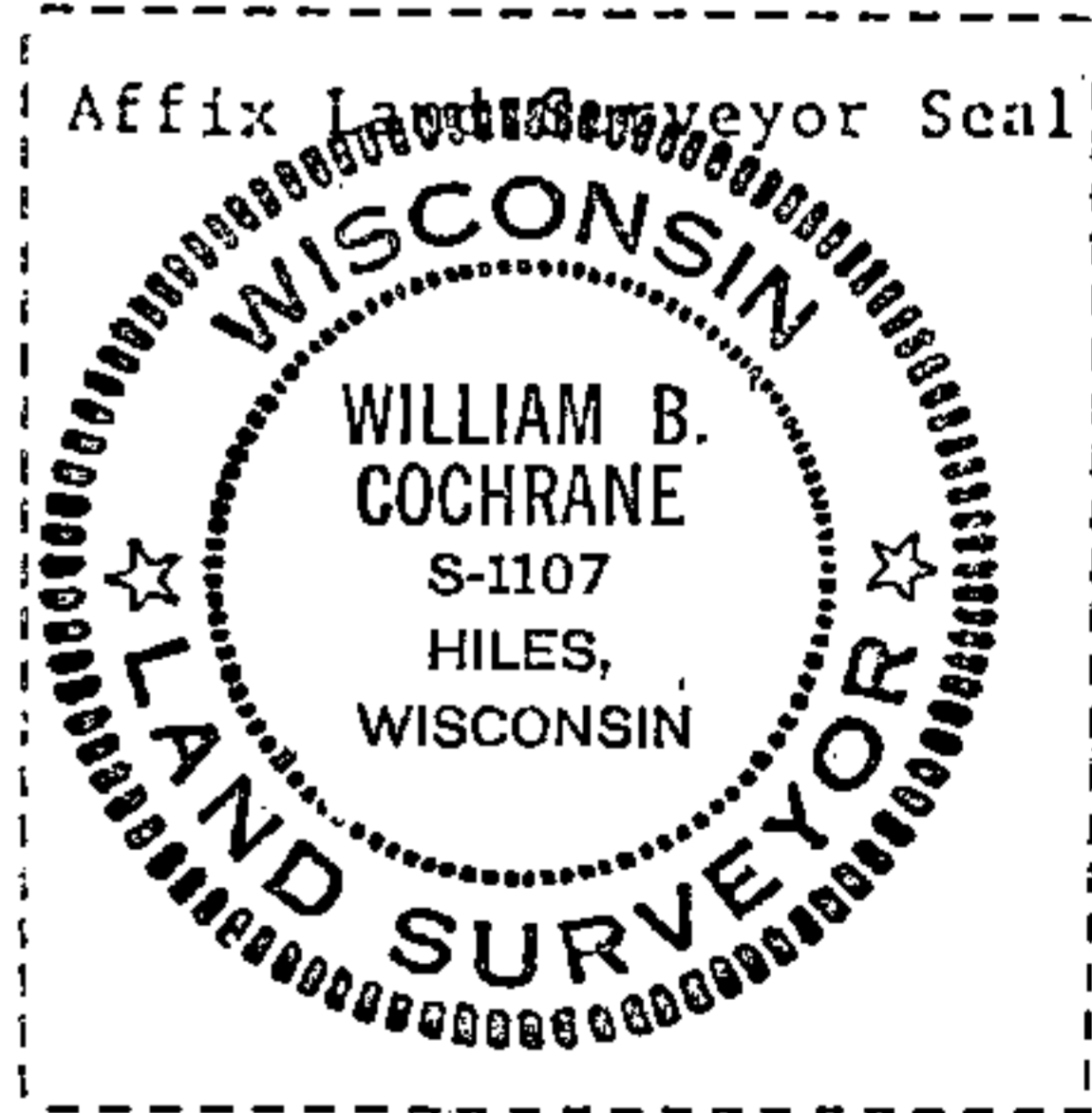
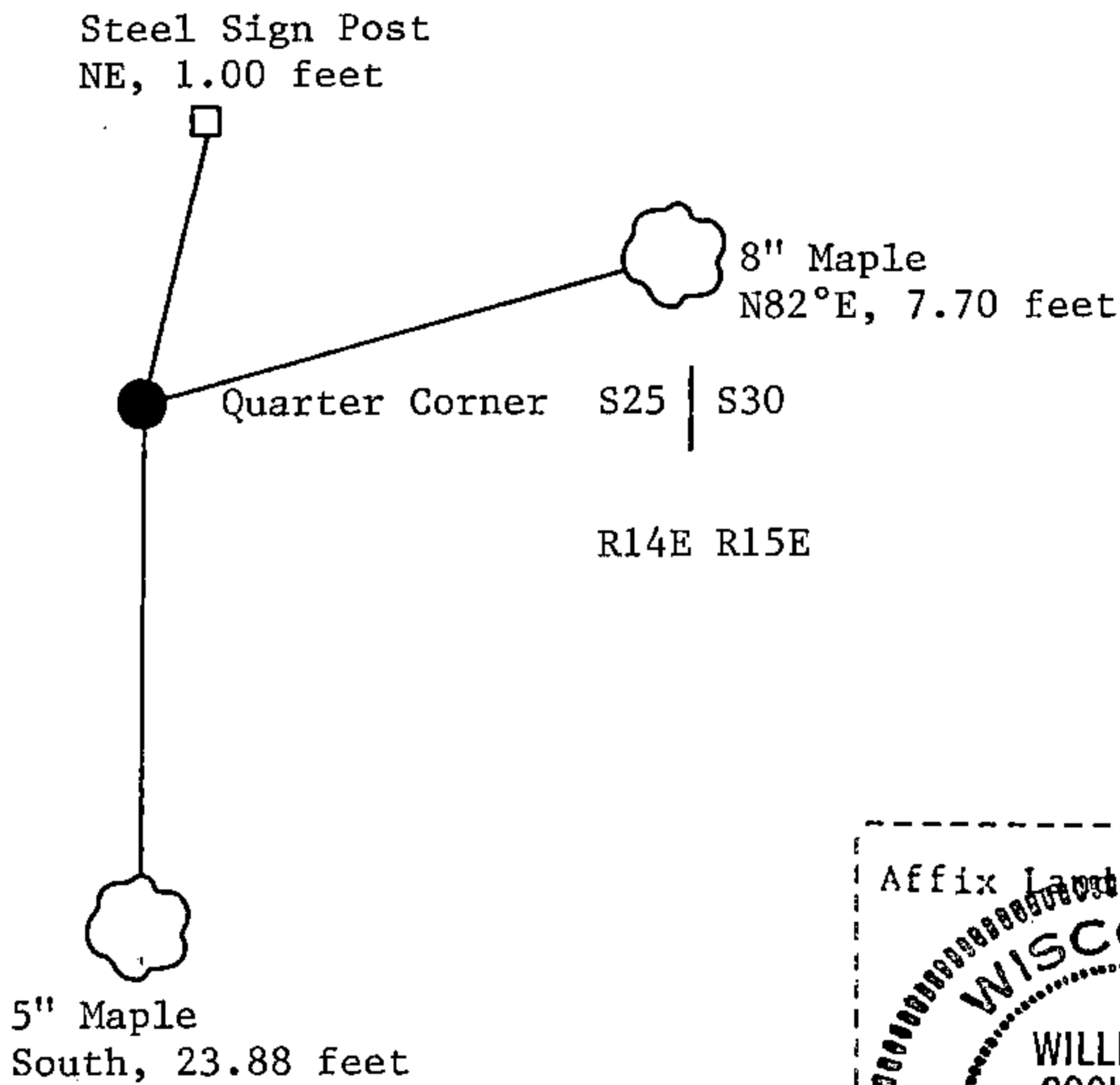
(e) Describe any material discrepancy between the location of the corner as restored or reestablished and the location of that corner as previously restored or reestablished by distance and direction. Show the discrepancy on the plan view drawing under (d), above. Show the distances between the corner as previously restored or reestablished and (1) the corner as restored or reestablished, and (2) to at least 2 of the witness monuments shown on the drawing in (d), above.

See drawing below.

(f) Was the corner restored through acceptance of (1) an obliterated evidence location, or, (2) a found perpetuated location?

Restored from accepted evidence.

(g&h) Was the corner reestablished through lost corner proportionate methods? If so, show the method, including the directions and distances to other public land survey corners used as evidence or used for proportioning in determining the corner location?



(i) I, William B. Cochrane
(type or print name) certify that the corner location shown on this record was determined by me or under my direction and control and that this U.S. Public Land Survey Monument Record is correct and complete to the best of my knowledge and belief.

William B. Cochrane March 27, 1985
Signature Date