

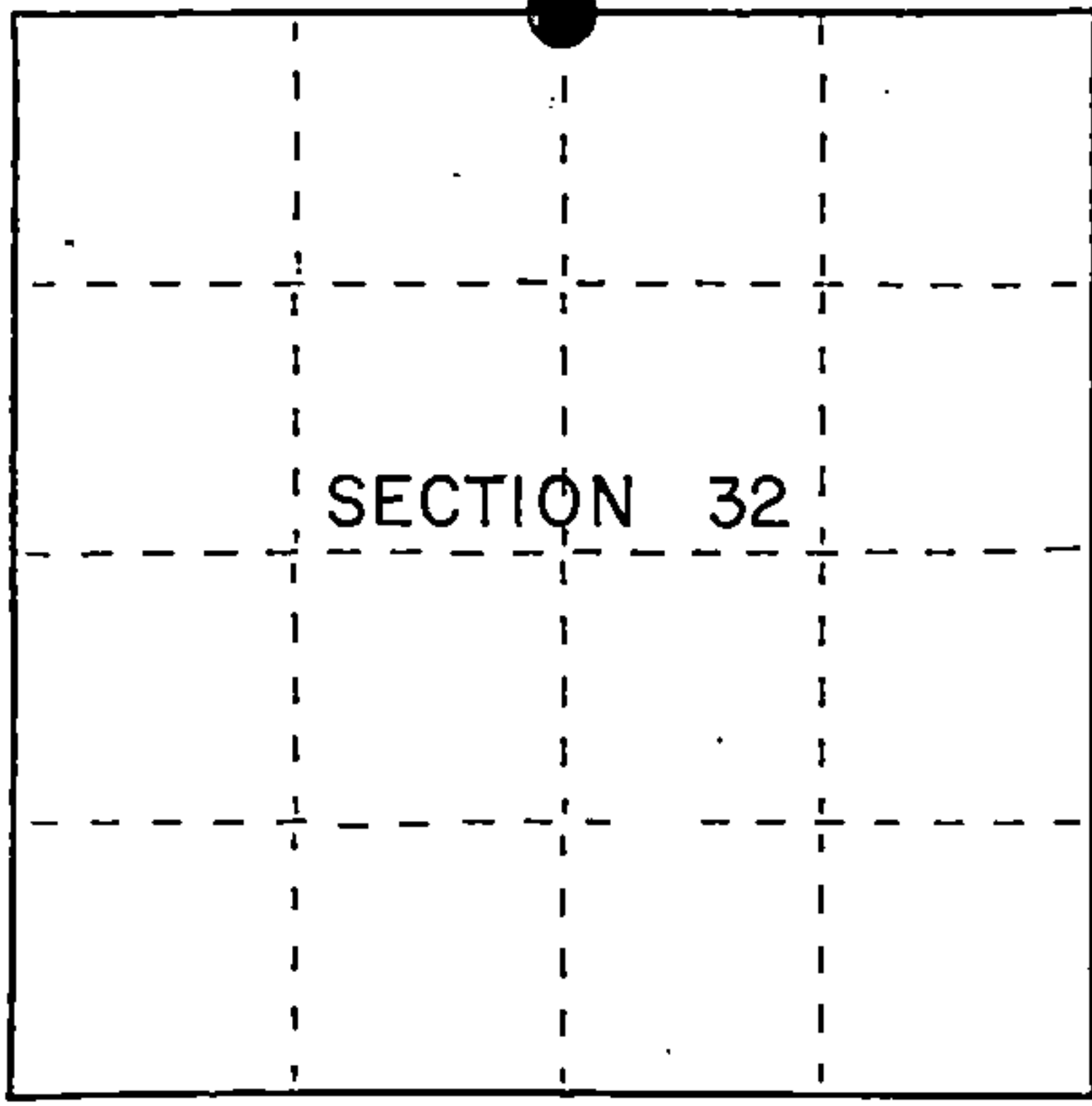
U.S. PUBLIC LAND SURVEY MONUMENT RECORD

Index No. V-7

State of Wisconsin }
County of Forest } ss.

I, Gary L. Pisoni, do hereby
certify that on the 16th day
of January, 1995, I found
evidence of the North Quarter
corner of Section 32
Township 38 North, Range
14 East, Fourth Principal Meridian,
as described hereon; and that from this evidence
I established a new monument and accessories
as described hereon to perpetuate the original
location of this corner.

Resident witnesses:



● = Corner monument restored.

History of original corner establishment:

Original Government Survey in 1865 by James L. Nowlin. West corrected bet. Sections 29 and 32, at 39.50 chs., set Quarter Section Post, from which the following bear; Spruce, 7", N61°W, 45 lks., Tamarack, 6", S12°E, 10 lks.

In 1966, Jean Resvick, RLS, with the Forest Service, found a 4" X 4" squared cedar post with scribe marks in a ring of rock. Replaced cedar post with a 2" diameter galvanized iron pipe with a brass cap stamped to identify the corner. Blazed and scribed the following new bearing trees;

Maple	11"	N02°W	25.88 feet
Y. Birch	6"	S06°E	31.79 feet

Description of corner evidence found:

Found monument and bearing trees as described above;

Sugar Maple	17"	N02°W	25.88 feet
Y. Birch(Dead)		S06°E	31.79 feet

Description of monument and accessories I established to perpetuate the original location of this corner.

Blazed and scribed new bearing trees; (Measurements taken to a nail in side of tree)

Sugar Maple	8"	N65°E	63.04 feet
Sugar Maple	8"	S13°E	93.67 feet
Sugar Maple	9"	S39°W	42.94 feet
Steel Sign Post		S88°E	1.10 feet

Dated at Iron River, MI this 5th day of March, 1995

Signature: Gary L. Pisoni Title: Land Surveyor Registration No. S-1634
(County Surveyor, Registered Land Surveyor, or other duly authorized official)

Office of Register of Deeds, County of Forest, I hereby certify that the within instrument was filed in this office for record on the 20th day of March, 1997 at 1:30 o'clock P. M.

(Register of Deeds)
By: [Signature] Deputy

FORM NO. 985-A

H.C. Miller Company

Stock No. 26273

158147

43814290020

- (e) Describe any material discrepancy between the location of the corner as restored or reestablished and the location of that corner as previously restored or reestablished by distance and direction. Show the discrepancy on the plan view drawing under (d), above. Show the distances between the corner as previously restored or reestablished and (1) the corner as restored or reestablished, and (2) to at least 2 of the witness monuments shown on the drawing in (d), above.

None

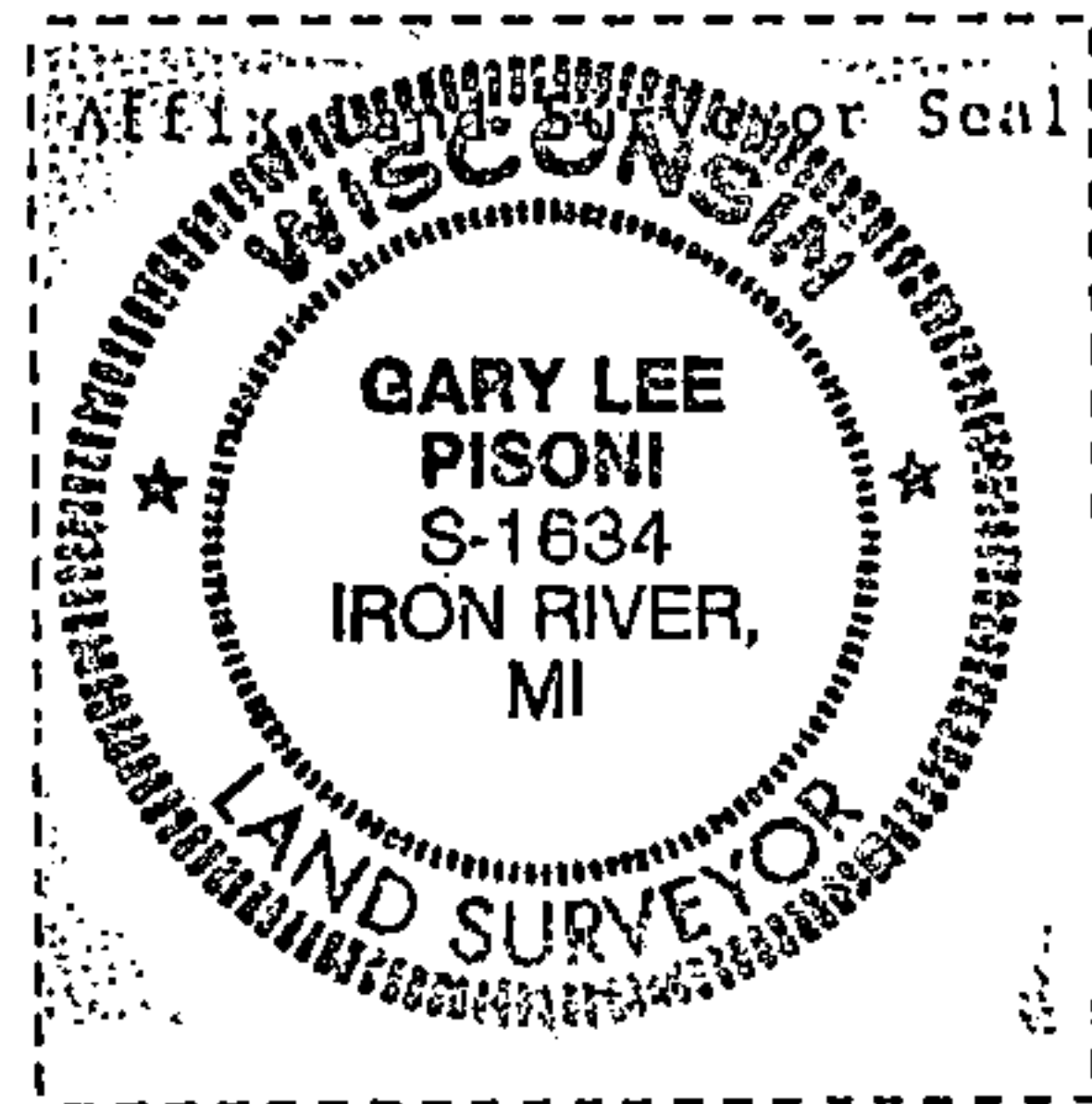
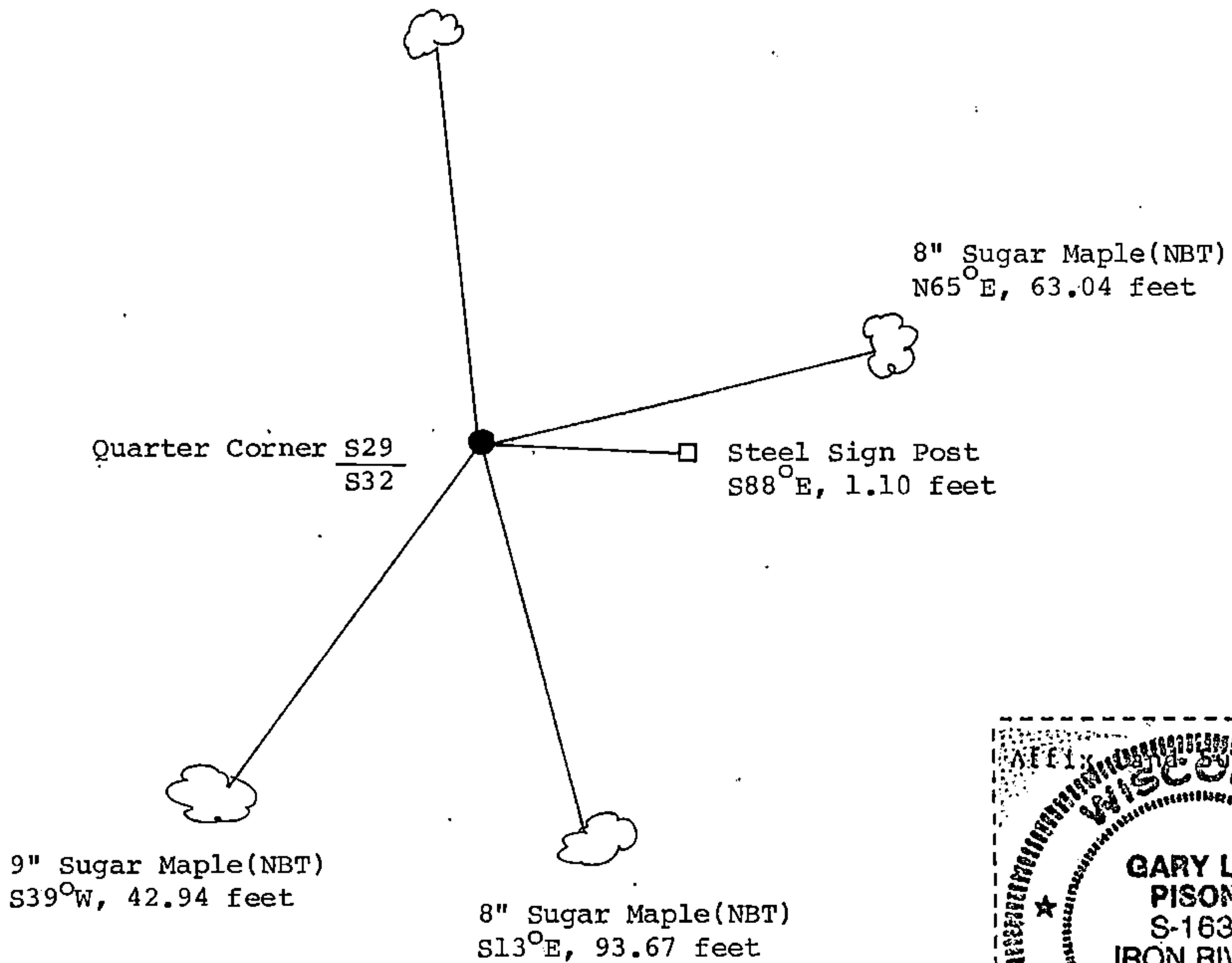
- (f) Was the corner restored through acceptance of (1) an obliterated evidence location, or, (2) a found perpetuated location?

Restored through acceptance of a found perpetuated location.

- (g&h) Was the corner reestablished through lost corner proportionate methods? If so, show the method, including the directions and distances to other public land survey corners used as evidence or used for proportioning in determining the corner location?

No

17" Sugar Maple
N02°W, 25.88 feet



- (i) I, Gary L. Pisoni
(type or print name) certify that the corner location shown on this record was determined by me or under my direction and control and that this U.S. Public Land Survey Monument Record is correct and complete to the best of my knowledge and belief.

Signature

Gary L. Pisoni

Date

4-10-95

CERTIFIED LAND CORNER RESTORATION

State of Wisconsin

County of Forest

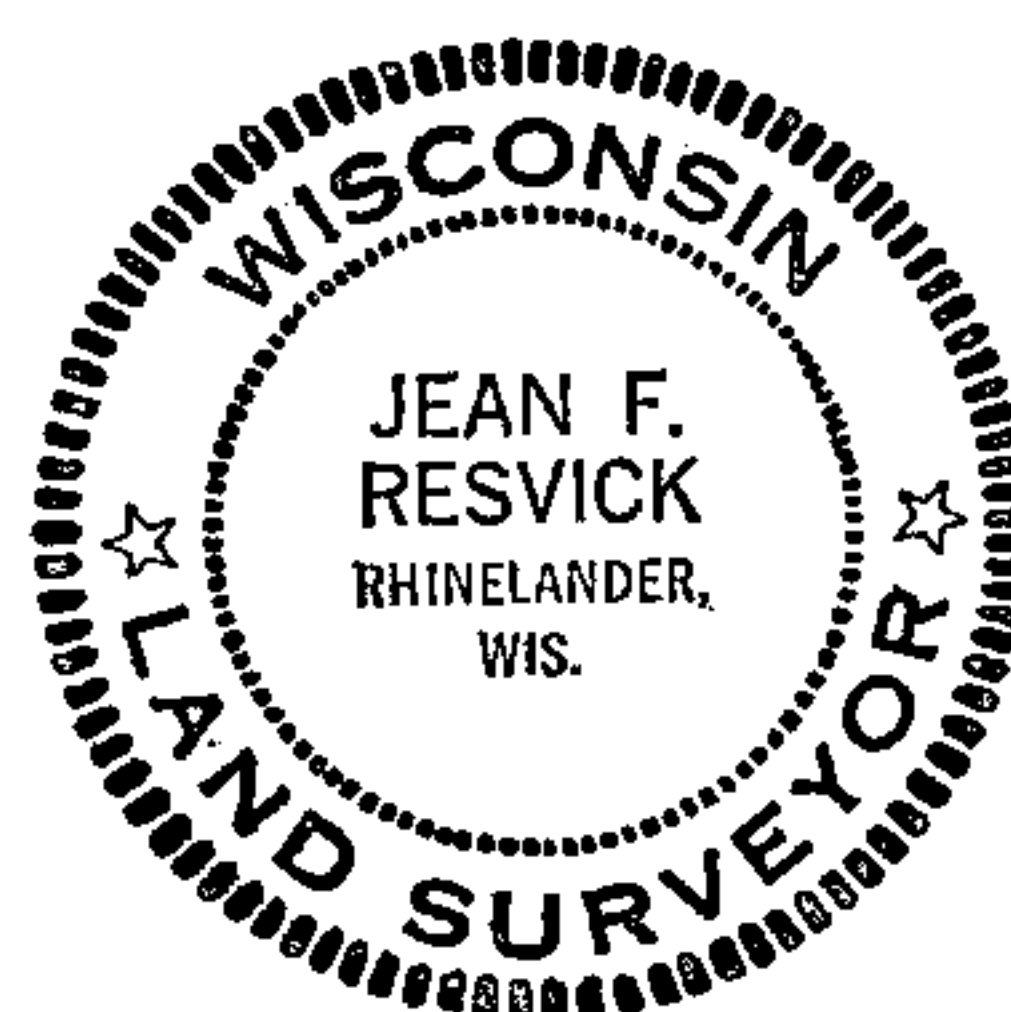
SS.

I, Jean F. Resvick, do hereby certify that on the 16th day of August, 1966, I found evidence of the North quarter corner of Section 32 Township 38 North, Range 14 East, Fourth Principal Meridian, as described hereon; and that from this evidence I established a new monument and accessories as described hereon to perpetuate the original location of this corner:

Description of original monument and accessories and subsequent restorations:

39.50 chains west corrected between sections 29 and 32,
set post for quarter corner.

Spruce 7", N61°W, 45 lks.
Tamarack 6", S12°E, 10 lks.

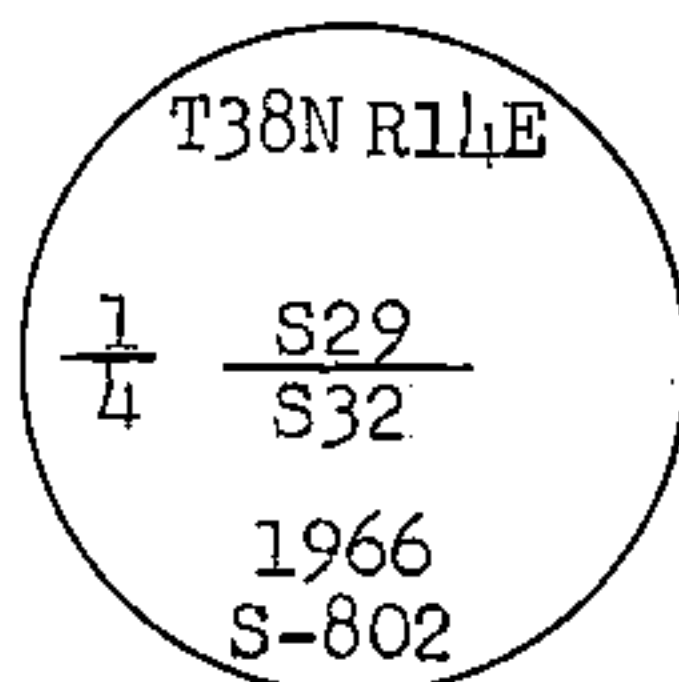


Description of corner evidence found:

Corner marked with 7 inch diameter cedar post top 3 ft. which was squared to 5x5. Post was 5 feet above ground in ring of rock. A 4x4 cedar post, 2½ ft. long, scribed ¼, was wired to west side of large post. This corner found marked and used by others has been in place for over 30 years.

Description of monument and accessories I established to perpetuate the original location of this corner:

Replaced cedar post with 2 inch inside diameter, galvanized iron pipe, 5 feet long, flanged at bottom, filled with concrete with brass tablet marked:



From which the following blazed and scribed new bearing trees bear:

Maple 11", N2°W, 25.88 ft., 39.21 lks.
Yellow birch 6", S6°30'E, 31.79 ft., 48.17 lks.

Resident witnesses

Dated at Rhineland Wisconsin, this 6th day of Feb, 1967.

Signature Jean F. Resvick Title Cadastral Surveyor
(County Surveyor, Registered Land Surveyor, or other duly authorized official)

Surveyors Registration No. S-802DOC. NO. 92685Office of Office Register of Deeds County of Forest

I hereby certify that the within instrument was filed in this office for record on the 2nd day of March, 1967, and was filed in Book No. 1 Page No. V-7 of County Records.

Signature Eugene Stagnier Title Register of Deeds

Township 38 North, Range 14 East, Section 32, Index No. V-7, Page No. 1

43814290020

● = Corner monument restored

□ =