

## CERTIFIED LAND CORNER RESTORATION

State of Wisconsin

County of Forest

ss.

I, Jean F. Resvick, do hereby certify that on the 24th day of July, 1972, I found evidence of the Northwest Section corner of Section 1 Township 37 North, Range 15 East, Fourth Principal Meridian, as described hereon; and that from this evidence I established a new monument and accessories as described hereon to perpetuate the original location of this corner:

## Description of original monument and accessories and subsequent restorations:

Surveyed in 1857 by Artemas Curtis.  
 80.00 chains west between sections 1 & 36, set post.  
 White pine 22, N55W, 38 lks.  
 White Pine 20, N11E, 42 lks.  
 Hemlock 10, S37E, 52 lks.  
 Hemlock 15, S45W, 18 lks.  
 5.50 chains south, stream 12 lks, wide runs west.  
 10.00 chains west, stream 20 lks. wide runs NE.  
 7.00 chains north, creek 6 lks. wide runs NE.

## Description of corner evidence found:

White Pine stump, scribed S35, B.T.  
 From a point S55E, 38 lks. from stump found above a white pine stump  
 South 5.50 chains stream 20 lks. wide  
 North 7.00 chains creek 4 lks. wide  
 West 10.00 chains runs NE

## Description of monument and accessories I established to perpetuate the original location of this corner:

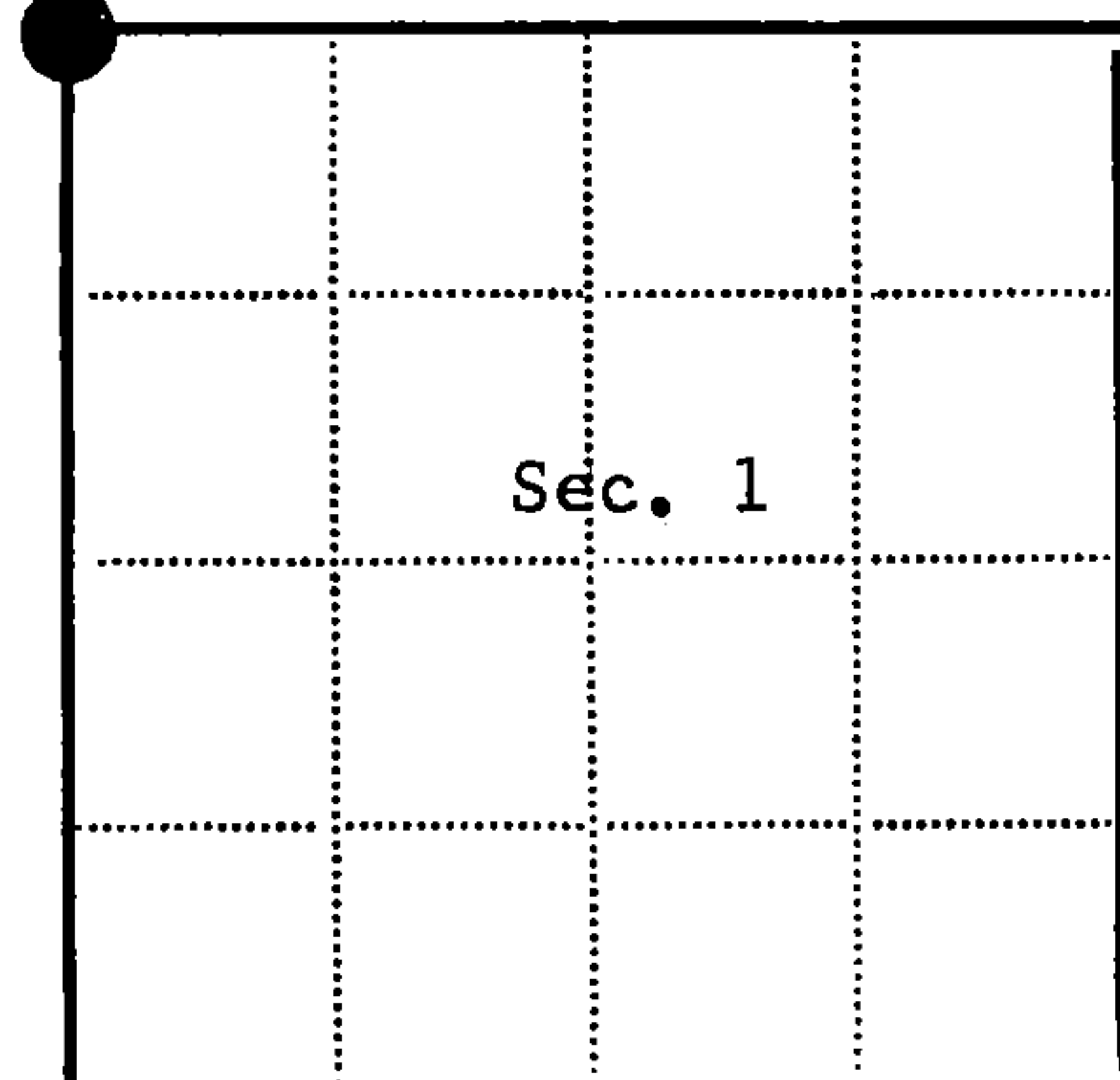
At point S55E, 38 links from white pine stump set 2 inch. inside diameter galvanized wrought iron pipe 5 foot long, filled with concrete with 6 inch square plate on bottom with brass cap stamped:

T38N R15E

S35 | S36  
 S2 | S1  
 T37N  
 1972  
 S - 802

From which the following blazed and scribed new bearing trees bear:

Red Pine 6, N54E, 17.90 ft.  
 Red Pine 9, S52E, 18.29 ft.  
 Spruce 4, S17W, 9.25 ft.



● = Corner monument restored

□ =

Resident witnesses

Dated at Rhineland Wisconsin, this 6th day of April, 1973.

Signature Jean F. Resvick Title Land Surveyor  
 (County Surveyor, Registered Land Surveyor, or other duly authorized official)

Surveyors Registration No. S-802DOCUMENT NO. 103125Office of Register of Deeds County of Forest

I hereby certify that the within instrument was filed in this office for record on the 10th day of April, 1973, and was filed in Book No. A-21 Page No. A-21 of County Records.

Signature Eugene Stutzman Title Register of Deeds

Township 37 North, Range 15E, Section 1 Index No. A-21, Page No. A-21

43815350000

A  
21

U.S. PUBLIC LAND SURVEY MONUMENT RECORD

Index No. **A-21**

State of Wisconsin }  
County of Forest } ss.

I William B. Cochrane, do hereby  
certify that on the 14th day  
of February, 1985, I found  
evidence of the Northwest Section  
corner of Section 1  
Township 37, North, Range  
15 East, Fourth Principal Meridian,  
as described hereon; and that from this evidence  
I established a new monument and accessories  
as described hereon to perpetuate the original  
location of this corner.

Resident witnesses:

David Brownell

Tony Tillman

History of original corner establishment:

Original Government Survey in 1857 by Artemas Curtis. In 1972, Jean Resvick, a Land Surveyor with the U.S. Forest Service, found original B.T. evidence. From evidence, set a 2" diameter galvanized iron pipe, 5 feet long, with a brass cap stamped: T38N R15E, S1, S2, S35, S36, T37N, 1972, S-802. From which the following bear:

R. Pine	6"	N54°E	17.90 feet
R. Pine	9"	S52°E	18.29 feet
Spruce	4"	S17°W	9.25 feet

Description of corner evidence found:

Monument as described and in place, from which the following bear:

R. Pine	8"	N54°E	17.90 feet
R. Pine	9"	S52°E	18.29 feet
Spruce	4"	S17°W	9.25 feet- cut down for Photo Project.

Description of monument and accessories I established to perpetuate the original location of this corner.

Blazed and scribed the following new bearing trees:

R. Pine	6"	S64°W	36.68 feet
Aspen	7"	N70°W	31.20 feet
Steel sign post		South	1.00 feet

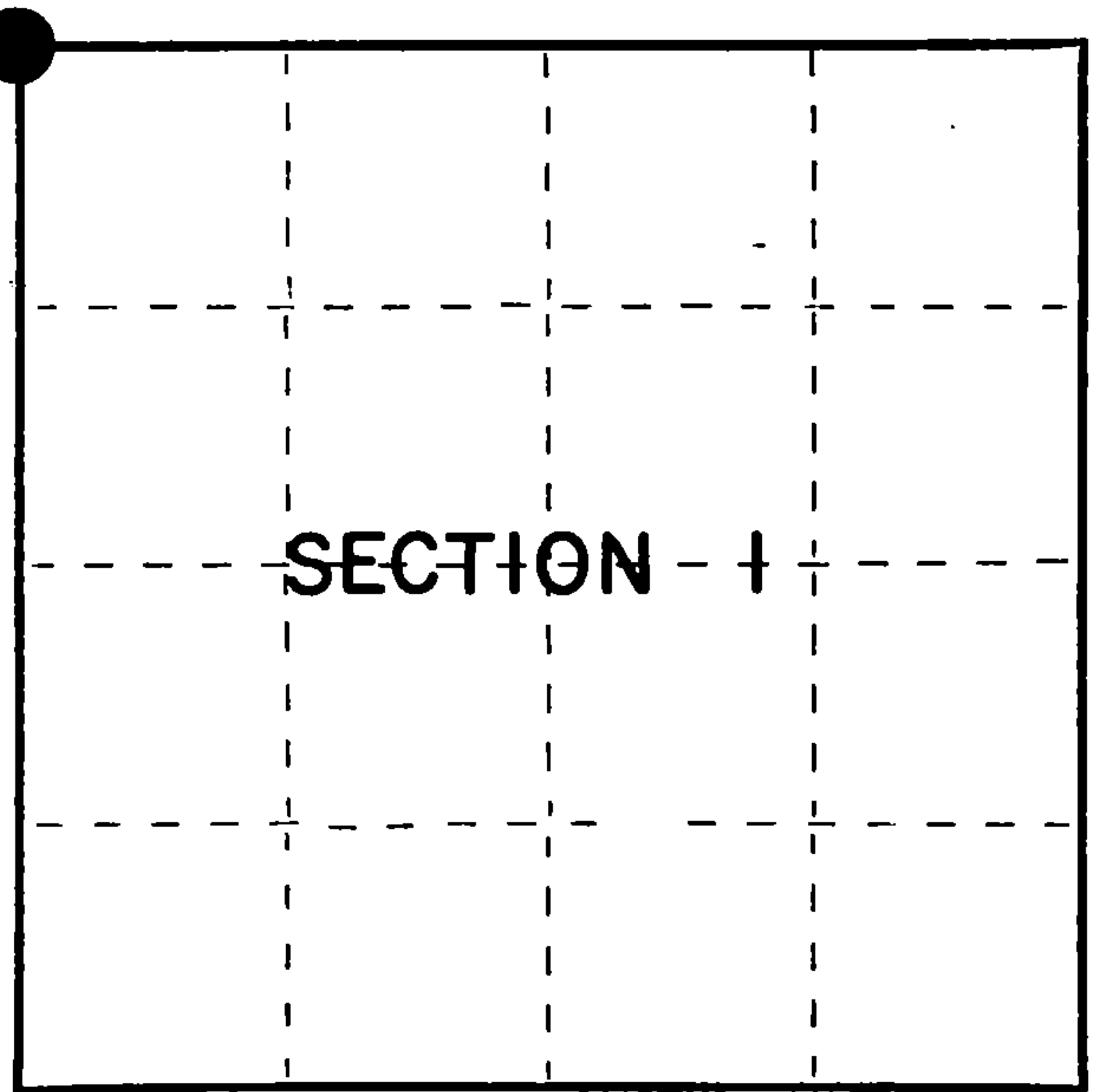
Dated at Hiles Wis., this 8th day of March, 1985

Signature William B. Cochrane Title Land Surveyor Registration No. S-1107  
(County Surveyor, Registered Land Surveyor, or other duly authorized official)

Office of Register of Deeds, County of Forest, I hereby certify that the within  
instrument was filed in this office for record on the 24th day of April, 1985  
at 1:00 o'clock P. M.

Paul Aschenbrenner  
(Register of Deeds)

By \_\_\_\_\_ Deputy



○ = Corner monument restored.



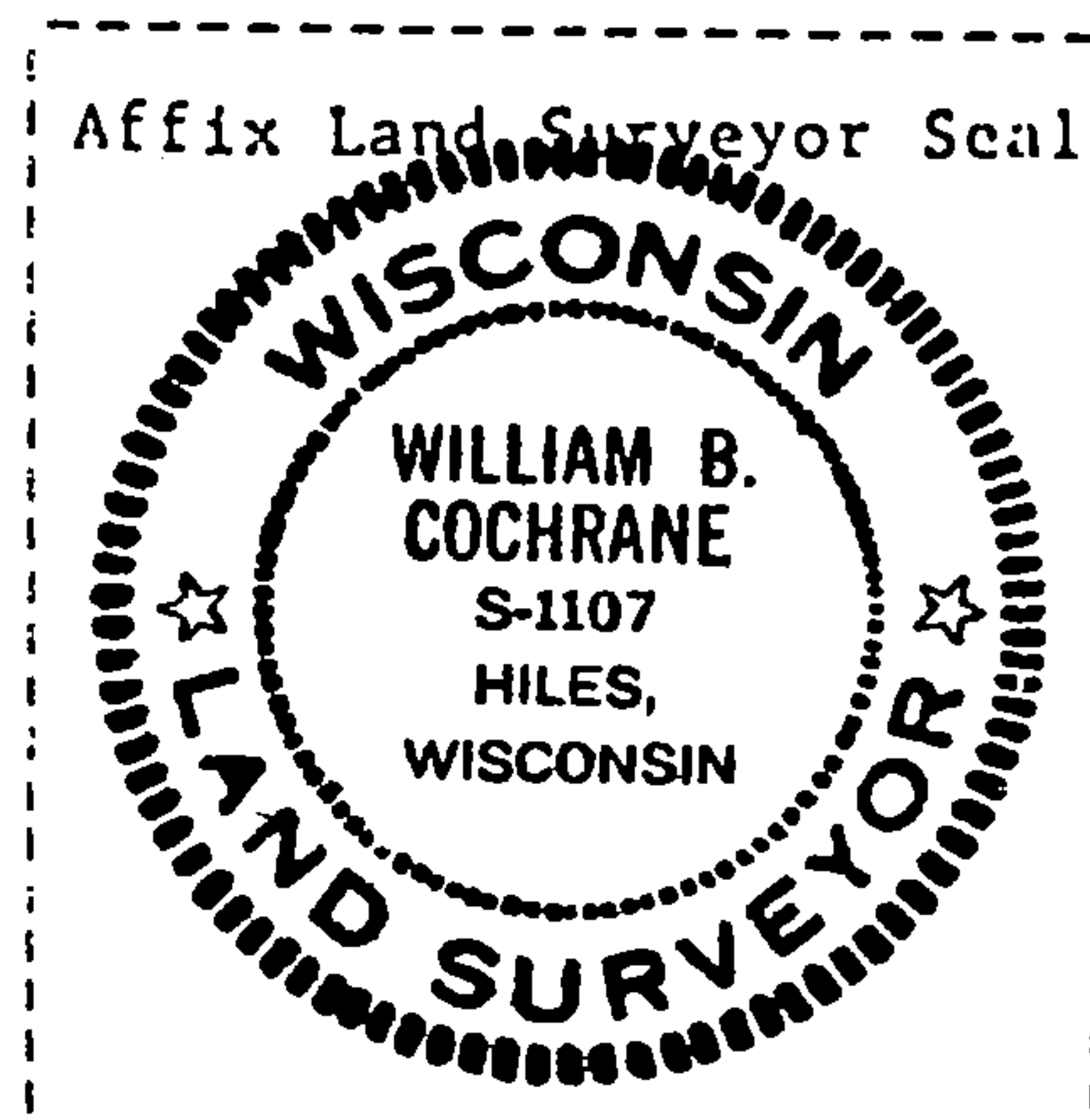
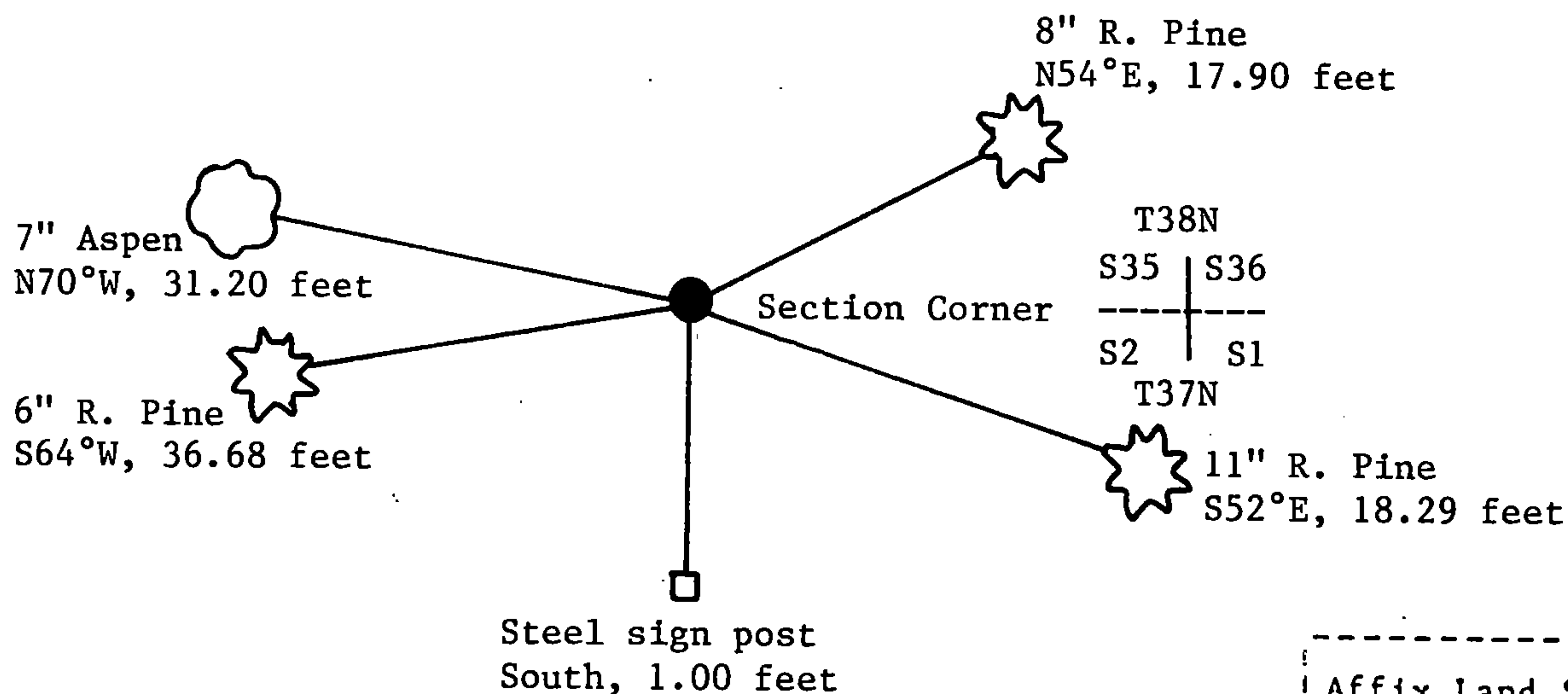
- (e) Describe any material discrepancy between the location of the corner as restored or reestablished and the location of that corner as previously restored or reestablished by distance and direction. Show the discrepancy on the plan view drawing under (d), above. Show the distances between the corner as previously restored or reestablished and (1) the corner as restored or reestablished, and (2) to at least 2 of the witness monuments shown on the drawing in (d), above.

See drawing below.

- (f) Was the corner restored through acceptance of (1) an obliterated evidence location, or, (2) a found perpetuated location?

Restored through acceptance of a found perpetuated location.

- (g&h) Was the corner reestablished through lost corner proportionate methods? If so, show the method, including the directions and distances to other public land survey corners used as evidence or used for proportioning in determining the corner location?



- (i) I, William B. Cochran  
(type or print name) certify that the corner location shown  
on this record was determined by me or under my direction and  
control and that this U.S. Public Land Survey Monument Record is  
correct and complete to the best of my knowledge and belief.

William B. Cochrane March 8, 1985  
Signature Date