

U.S. PUBLIC LAND SURVEY MONUMENT RECORD

Index No. **A-1**

State of Wisconsin }  
County of Forest } ss.

I, William B. Cochrane, do hereby  
certify that on the 6th day  
of April, 19 82, I found  
evidence of the Northwest Section  
corner of Section 6  
Township 37, North, Range  
16 East, Fourth Principal Meridian,  
as described hereon; and that from this evidence  
I established a new monument and accessories  
as described hereon to perpetuate the original  
location of this corner.

Resident witnesses:

David Brownell  
\_\_\_\_\_  
\_\_\_\_\_  
\_\_\_\_\_

History of original corner establishment:

Original Government Survey in 1857 by Artemas Curtis. In 1972, Jean Resvick, a Land Surveyor with the U.S. Forest Service, found a 6"x6" scribed cedar post in concurrence with original B.T. evidence. In place of post set a 2" diameter galvanized iron pipe, with a brass cap stamped: T38N, R15E, R16E, T37N, S1, S6, S31, S36, 1972, S-802. From which the following bear:

Cedar	5"	N55°E	22.79 feet	
Cedar	14"	S65°E	17.77 feet	
Cedar	12"	S73°E	7.56 feet	
Cedar	9"	N14°W	18.83 feet	Steel sign post, SW, 1.00 feet

Description of corner evidence found:

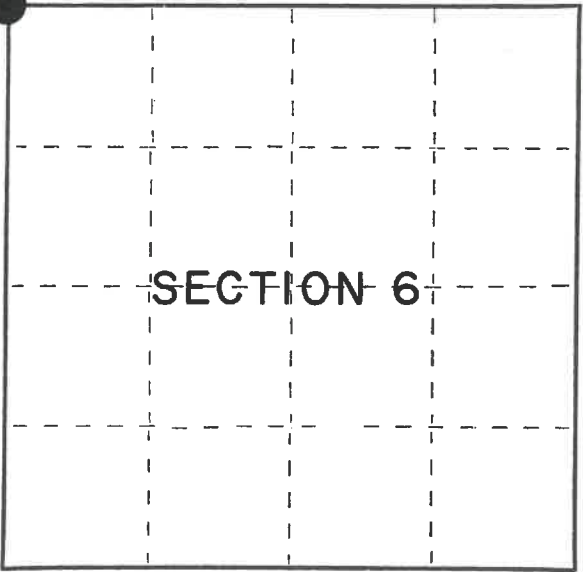
Monument as described and in place, from which the following bear:  
Steel sign post SW 1.00 feet

All of the above bearing trees were cut down for the Photo Project.

Description of monument and accessories I established to perpetuate the original location of this corner.

Blazed and scribed the following new bearing trees:

Cedar	8"	N 7°E	40.65 feet
Cedar	12"	S 4°E	55.26 feet
Cedar	11"	S57°W	46.25 feet
Spruce	6"	N72°W	56.77 feet



○ = Corner monument restored.

Dated at Hiles, Wis., this 8th day of March, 19 85.

Signature William B. Cochrane Title Land Surveyor Registration No. S-1107  
(County Surveyor, Registered Land Surveyor, or other duly authorized official)

Office of Register of Deeds, County of Forest, I hereby certify that the within  
instrument was filed in this office for record on the 24th day of April, 19 85  
at 1:00 o'clock P. M.

Paul Aschenbrenner  
(Register of Deeds)

By \_\_\_\_\_ Deputy

43815360000

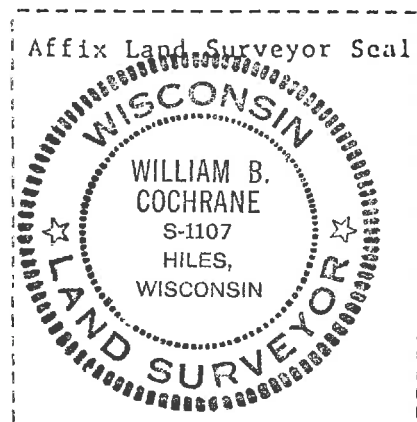
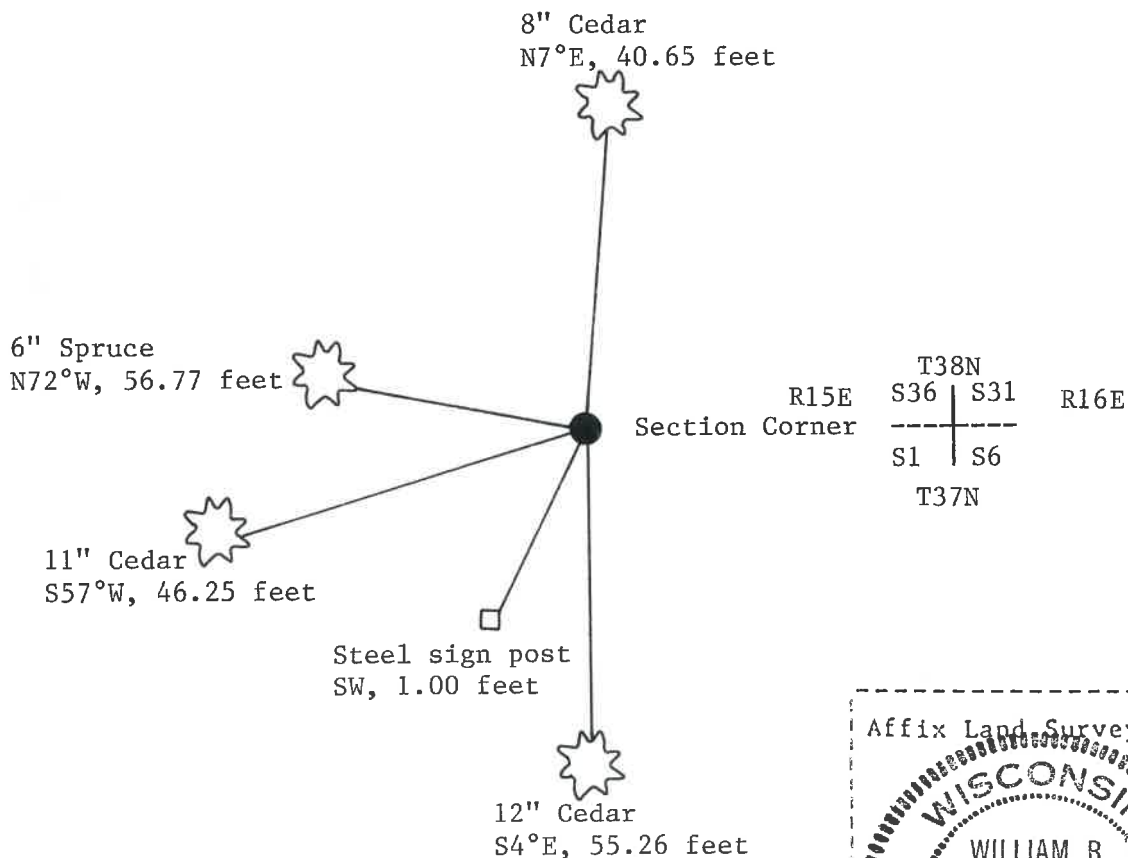
(e) Describe any material discrepancy between the location of the corner as restored or reestablished and the location of that corner as previously restored or reestablished by distance and direction. Show the discrepancy on the plan view drawing under (d), above. Show the distances between the corner as previously restored or reestablished and (1) the corner as restored or reestablished, and (2) to at least 2 of the witness monuments shown on the drawing in (d), above.

See drawing below.

(f) Was the corner restored through acceptance of (1) an obliterated evidence location, or, (2) a found perpetuated location?

Restored through acceptance of a found perpetuated location.

(g&h) Was the corner reestablished through lost corner proportionate methods? If so, show the method, including the directions and distances to other public land survey corners used as evidence or used for proportioning in determining the corner location?



(i) I, William B. Cochrane  
(type or print name) certify that the corner location shown on this record was determined by me or under my direction and control and that this U.S. Public Land Survey Monument Record is correct and complete to the best of my knowledge and belief.

William B. Cochrane March 8, 1985  
Signature Date