



Stock No. 26273

156563

State of Wisconsin  
County of Forest } ss.

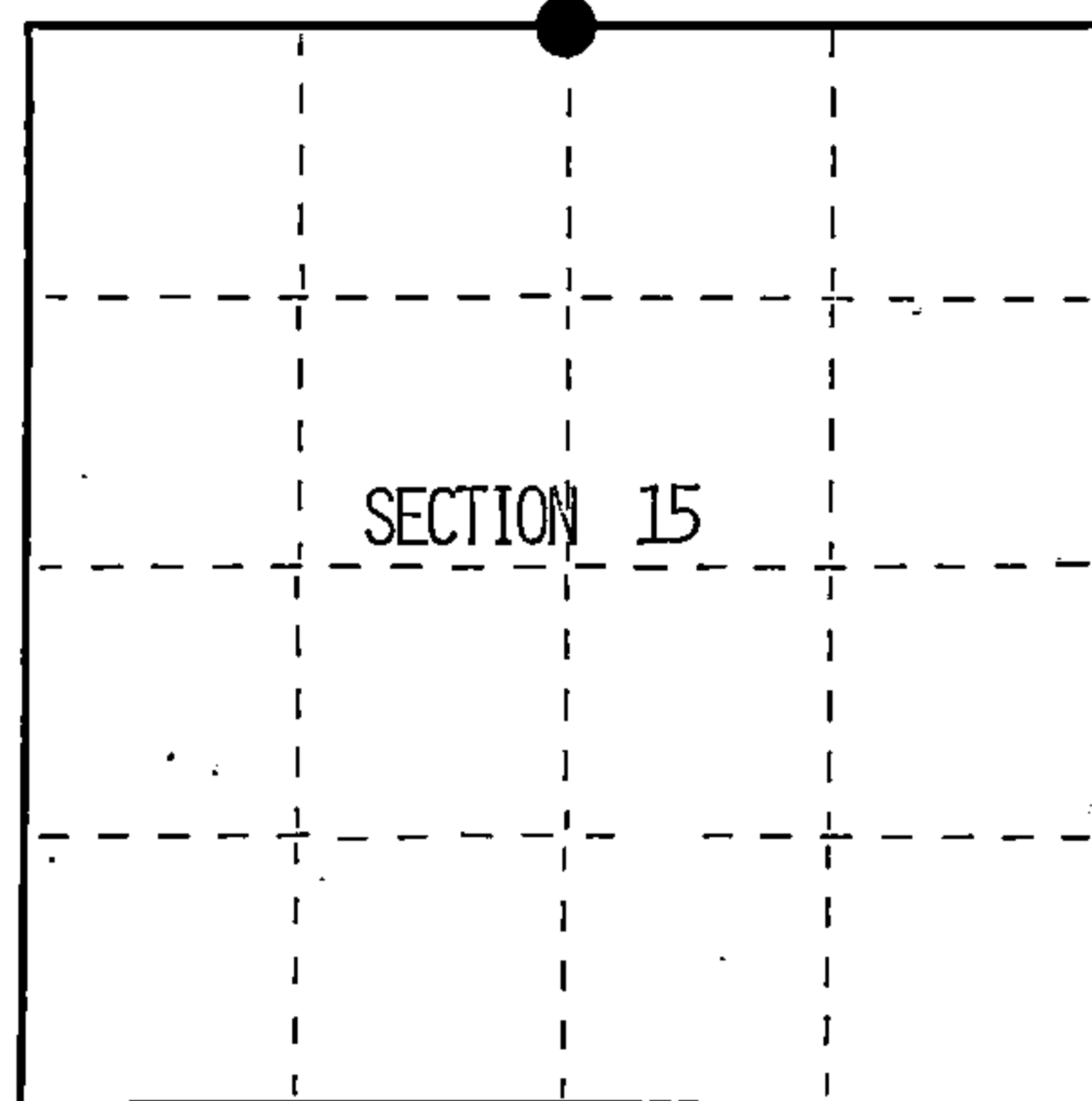
I William B. Cochrane, do hereby  
certify that on the 28th day  
of March, 19 94, I found  
evidence of the North Quarter  
corner of 15  
Township 39, North, Range  
13 East, Fourth Principal Meridian,  
as described hereon; and that from this evidence  
I established a new monument and accessories  
as described hereon to perpetuate the original  
location of this corner.

Resident witnesses:

\_\_\_\_\_

\_\_\_\_\_

\_\_\_\_\_



● = Corner monument restored.

## CERTIFIED LAND CORNER RESTORATION

Index No. J-15

History of original corner establishment:

Original survey in 1865 by William E. Daugherty.  
West corrected between sections 10 and 15, set quarter Section post.  
from which:

Sugar	16"	N10°E	281ks
Sugar	14"	S15°W	20 lks

Description of corner evidence found:

No corner evidence found.

I re-establish the corner position at proportionate measurement and on line  
between the Northeast and Northwest Section corners.

Description of monument and accessories I established to perpetuate the original location of this corner.

At the corner position I set a 2½"X36" aluminum pipe monument 2½ feet in the  
ground with an aluminum cap stamped: T39N, R13E, 1/4, S10, S15, 1994, S-1107.

From which:

Maple	9"	N10°E	23.56 feet
Maple	12"	S68°W	25.48 feet
Steel sign post		East	.75 feet

Dated at Hiles, Wis., this 7th day of December, 19 94

Signature William B. Cochrane Title Land Surveyor Registration No. 1107  
(County Surveyor, Registered Land Surveyor, or other duly authorized official)

Office of Register of Deeds, County of Forest, I hereby certify that the within  
instrument was filed in this office for record on the 23rd day of August, 19 96  
at 2:30 o'clock P. M.

(Register of Deeds)

By Paul J. Ludwig Deputy

42913100020

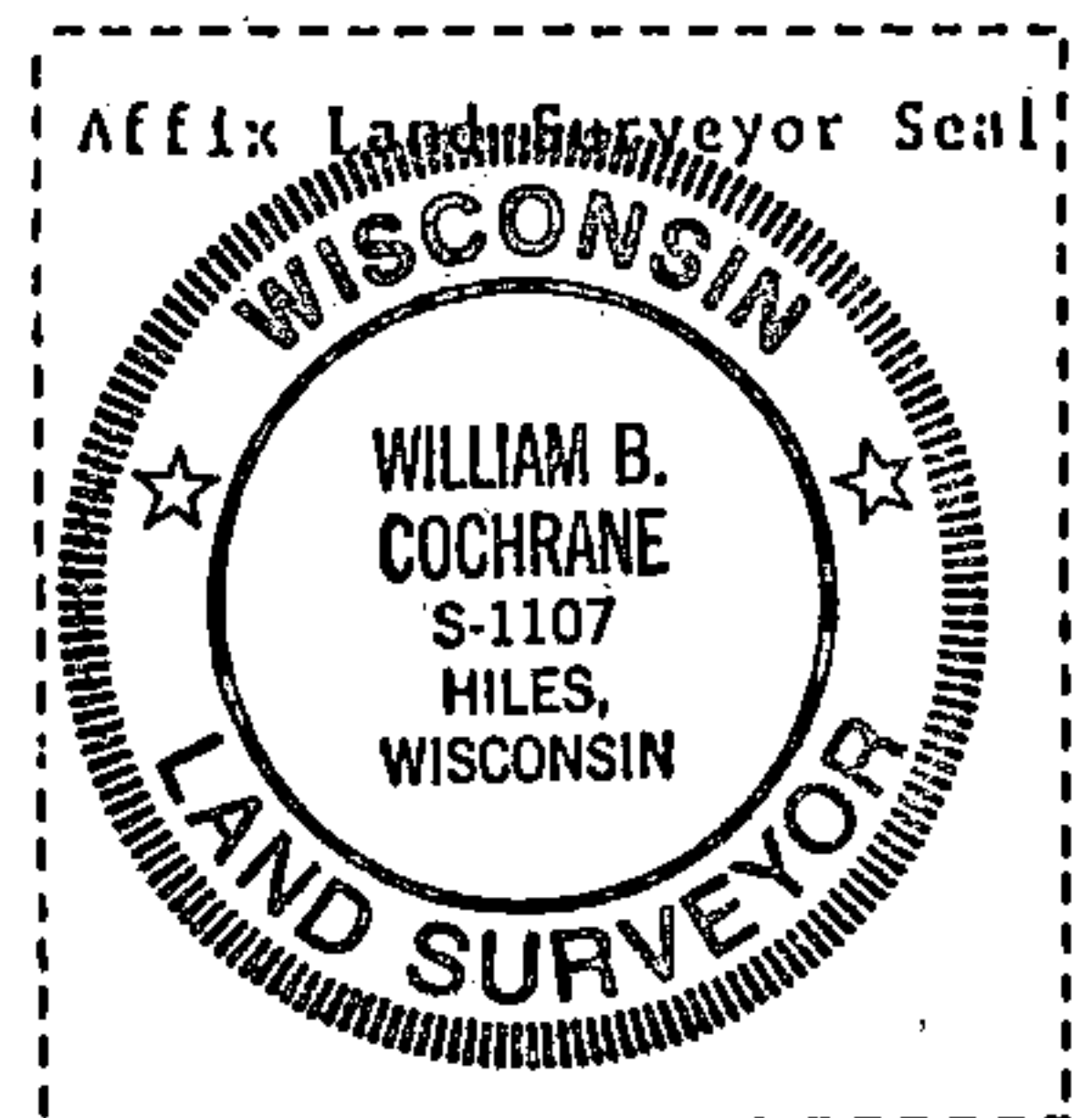
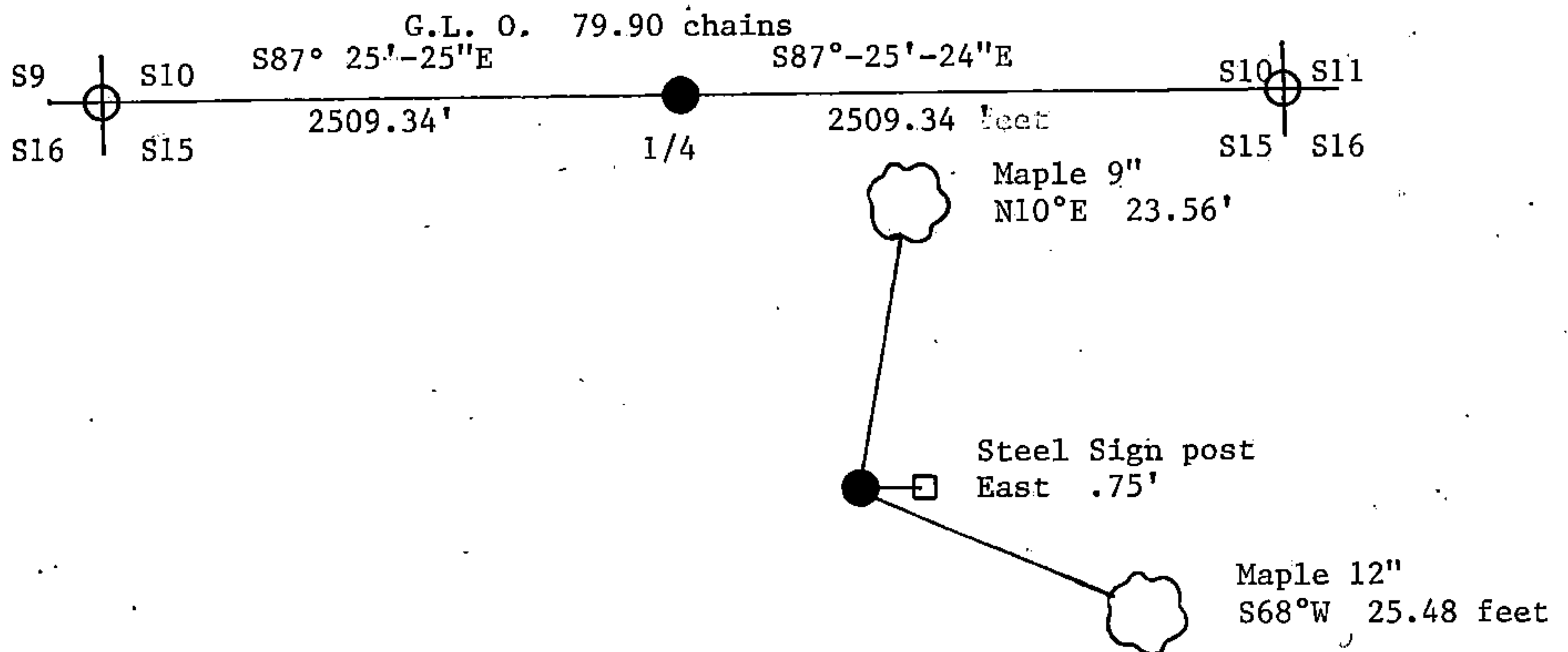
(d) Describe any material discrepancy between the location of the corner as restored or reestablished and the location of that corner as previously restored or reestablished by distance and direction. Show the discrepancy on the plan view drawing under (d), above. Show the distances between the corner as previously restored or reestablished and (1) the corner as restored or reestablished, and (2) to at least 2 of the witness monuments shown on the drawing in (d), above.

See darwing below.

(f) Was the corner restored through acceptance of (1) an obliterated evidence location, or, (2) a found perpetuated location?

Re-established through lost corner proportionate methods.

(g&h) Was the corner reestablished through lost corner proportionate methods? If so, show the method, including the directions and distances to other public land survey corners used as evidence or used for proportioning in determining the corner location?



(i) 1. William B. Cochrane  
(Type or print name) certify that the corner location shown on this record was determined by me or under my direction and control and that this U.S. Public Land Survey Monument Record is correct and complete to the best of my knowledge and belief.

William B. Cochrane 12/7/94  
Signature Date

Survey requested by: \_\_\_\_\_  
District Ranger Date

J-15