

Stock No. 26273

156567

State of Wisconsin }
County of Forest } ss.

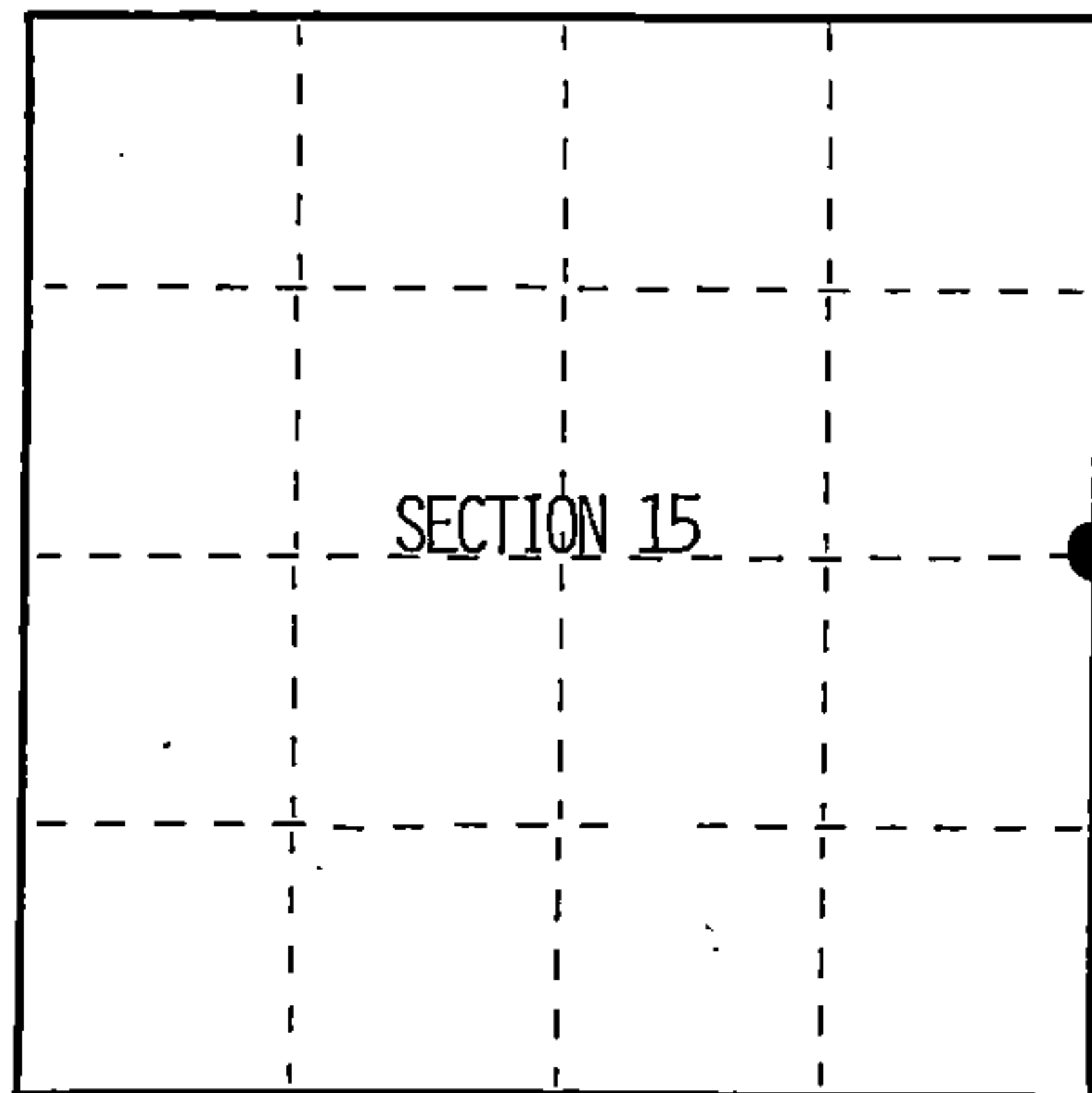
William B. Cochran, do hereby
certify that on the 29th day
of March, 1994, I found
evidence of the East Quarter
corner of Section 15
Township 39, North, Range
13 East, Fourth Principal Meridian,
as described hereon; and that from this evidence
I established a new monument and accessories
as described hereon to perpetuate the original
location of this corner.

Resident witnesses:

.....

.....

.....



● = Corner monument restored.

CERTIFIED LAND CORNER RESTORATION

Index No. L-17

History of original corner establishment:

Original Government Survey by William E. Daugherty in 1865.
At 40 chains north between sections 14 and 15 set corner post.
From which:

Birch	7"	S36°W	26 lks
Cedar	7"	N86°W	15 lks

At 3.35 chains South creek 101ks runs SW

Description of corner evidence found:

No original corner evidence found.

Description of monument and accessories I established to perpetuate the original location of this corner.

At proportionate distance and on line between the Northeast and Southeast section
Corners I set a temporary Point. (The actual proportionate point falls in creek.)

I set a reference monument 2½X60" aluminum pipe 5½ feet in the ground with an
aluminum cap stamped: Reference Monument, T39N, R13E, 1/4, S14, S15, 1994, S-1107,
S20°E, 6.00 feet. From which:

Cedar	17"	N83°E	27.86 feet.	Steel sign post Southeast .50 feet
Cedar	14"	N14°W	37.09 feet.	

Dated at Hiles, Wis., this 12 day of December, 1994

Signature William B. Cochran Title Land Surveyor Registration No. S-1107
(County Surveyor, Registered Land Surveyor, or other duly authorized official)

Office of Register of Deeds, County of Forest, I hereby certify that the within
instrument was filed in this office for record on the 23rd day of August, 1996
at 2:30 o'clock P M.

(Register of Deeds)

By Paul Tomlin Deputy

43913152000

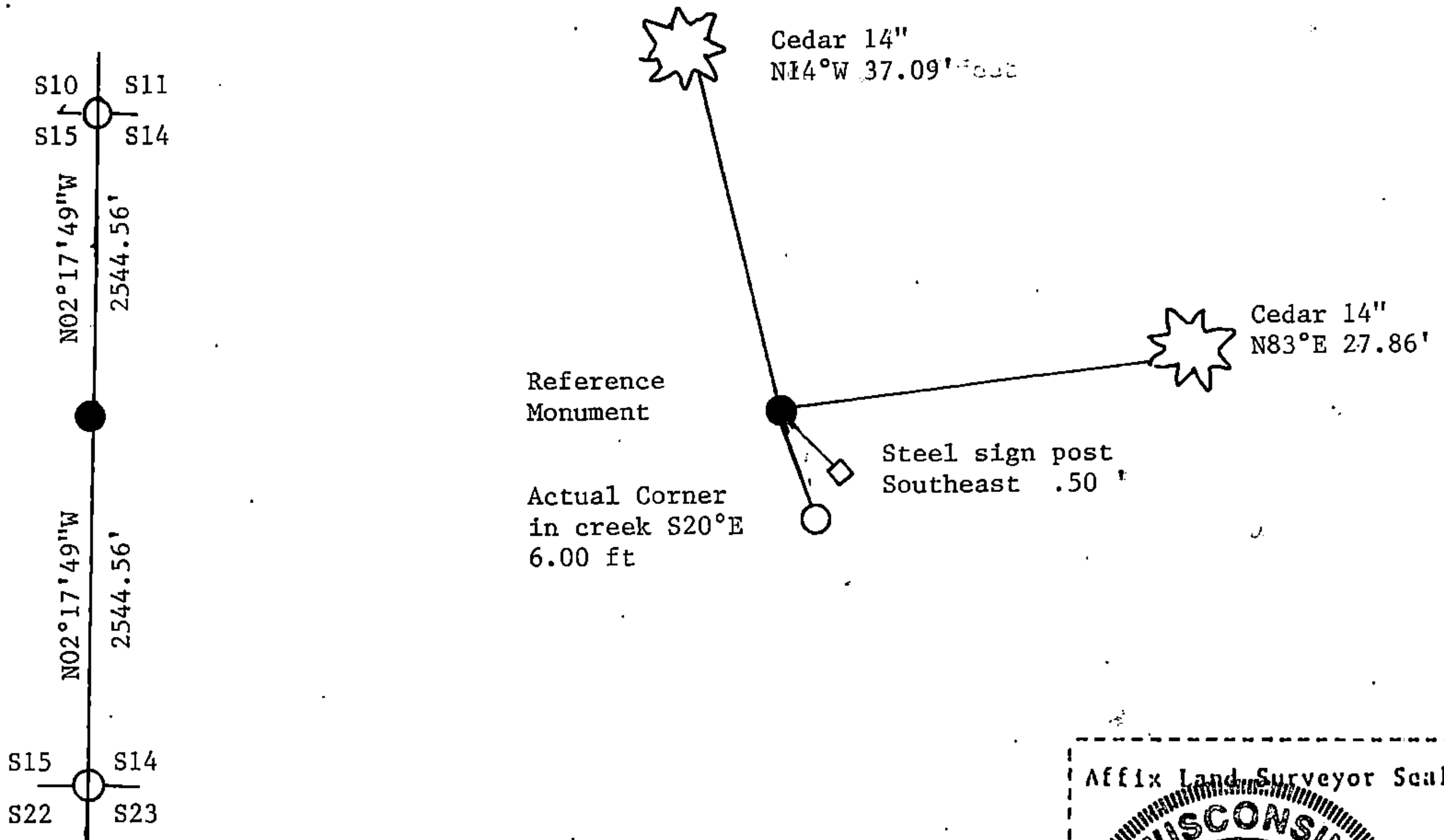
(e) Describe any material discrepancy between the location of the corner as restored or reestablished and the location of that corner as previously restored or reestablished by distance and direction. Show the discrepancy on the plan view drawing under (d), above. Show the distances between the corner as previously restored or reestablished and (1) the corner as restored or reestablished, and (2) to at least 2 of the witness monuments shown on the drawing in (d), above.

see drawing below.

(f) Was the corner restored through acceptance of (1) an obliterated evidence location, or, (2) a found perpetuated location?

Re-established through lost corner proportionate methods.

(g&h) Was the corner reestablished through lost corner proportionate methods? If so, show the method, including the directions and distances to other public land survey corners used as evidence or used for proportioning in determining the corner location?



(i) I, William B. Cochrane.
(Type or print name) certify that the corner location shown on this record was determined by me or under my direction and control and that this U.S. Public Land Survey Monument Record is correct and complete to the best of my knowledge and belief.

William B. Cochrane 12/12/94
Signature Date

Survey requested by: _____
District Ranger Date

