

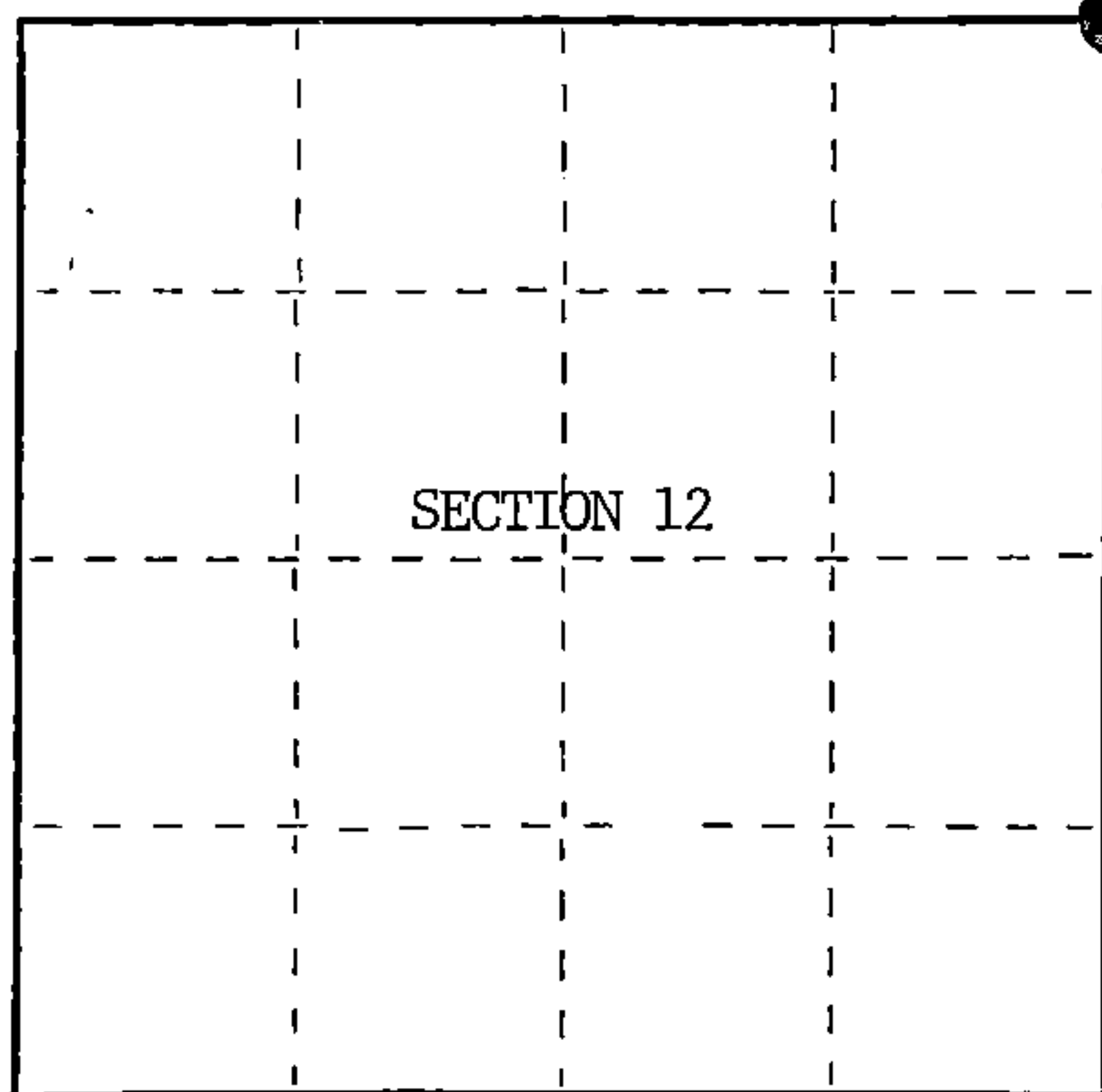
## U.S. PUBLIC LAND SURVEY MONUMENT RECORD

Index No. E-25

State of Wisconsin }  
County of Forest } ss.

I, William B. Cochran, do hereby  
certify that on the 21st day  
of August, 1985, I found  
evidence of the Northeast Section  
corner of Section 12  
Township 39, North, Range  
14 East, Fourth Principal Meridian,  
as described hereon; and that from this evidence  
I established a new monument and accessories  
as described hereon to perpetuate the original  
location of this corner.

Resident witnesses:

Tony TillmanState Plane Co-ordinates  
N- 263,703.7355  
E-2,337,323.3970

○ = Corner monument restored.

## History of original corner establishment:

Original Government Survey in 1858 by Artemas Curtis. North between Sections 7 and 12, 80.00 chs., set Section Corner Post to Sections 1, 6, 7 and 12, from which the following bear; Sugar, 14", S35°W, 28 lks., Spruce, 15", N50°W, 94 lks., Sugar, 10", N27°E, 14 lks., Lynn, 10", S20°E, 21 lks. In 1970, Thomas Arnott, a Local Surveyor, sub-divided Section 12. Found original bearing tree evidence. From evidence, set a 2 inch diameter iron pipe, from which the following bear;

Sugar	12"	S49°E	25.87 feet
Hemlock	24"	S45°W	13.65 feet
Elm	14"	N61°W	37.84 feet

## Description of corner evidence found:

Found iron pipe as described and in place, from which the following bear;

Sugar	13"	S49°E	25.87 feet
Hemlock	25"	S45°W	13.65 feet
Elm	15"	N61°W	37.84 feet

All of the above bearing trees were cut down for the Aerial Photo Project.

I accept the location of the iron pipe, in concurrence with bearing tree evidence, as the best available evidence for restoring the corner position.

No original corner evidence was recovered.

Description of monument and accessories I established to perpetuate the original location of this corner.

In place of iron pipe, set a 2½ inch diameter aluminum pipe monument, 3 feet long, 2½ feet in the ground, with an aluminum cap stamped; T39N, R14E, R15E, S1, S6, S7, S12, 1985, S-1107. From which the following new blazed and scribed bearing trees bear;

Maple	8"	N10°E	27.50 feet
Ironwood	10"	S38°E	13.77 feet
Hemlock	26"	S45°W	13.65 feet
Ironwood	12"	N64°W	39.70 feet
Steel Sign Post		NW	1.00 feet

Dated at Hiles, Wis., this 18th day of March, 1986Signature William B. Cochran Title Land Surveyor Registration No. S-1107  
(County Surveyor, Registered Land Surveyor, or other duly authorized official)

Office of Register of Deeds, County of Forest, I hereby certify that the within  
instrument was filed in this office for record on the 11th day of March, 1987.  
at 3:30 clock P. M.

Paul Aschenbrenner  
(Register of Deeds)

By \_\_\_\_\_ Deputy

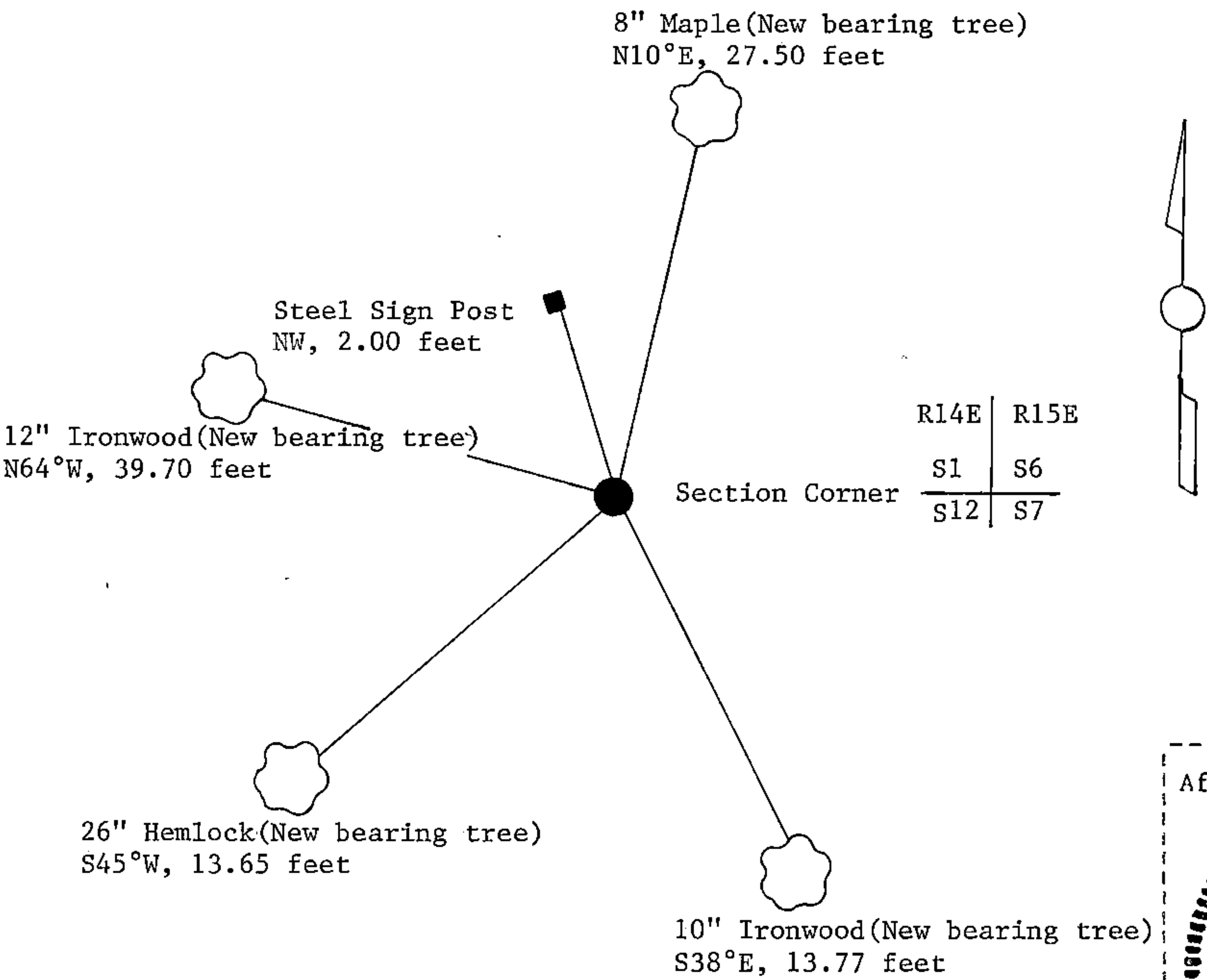
(e) Describe any material discrepancy between the location of the corner as restored or reestablished and the location of that corner as previously restored or reestablished by distance and direction. Show the discrepancy on the plan view drawing under (d), above. Show the distances between the corner as previously restored or reestablished and (1) the corner as restored or reestablished, and (2) to at least 2 of the witness monuments shown on the drawing in (d), above.

See drawing below.

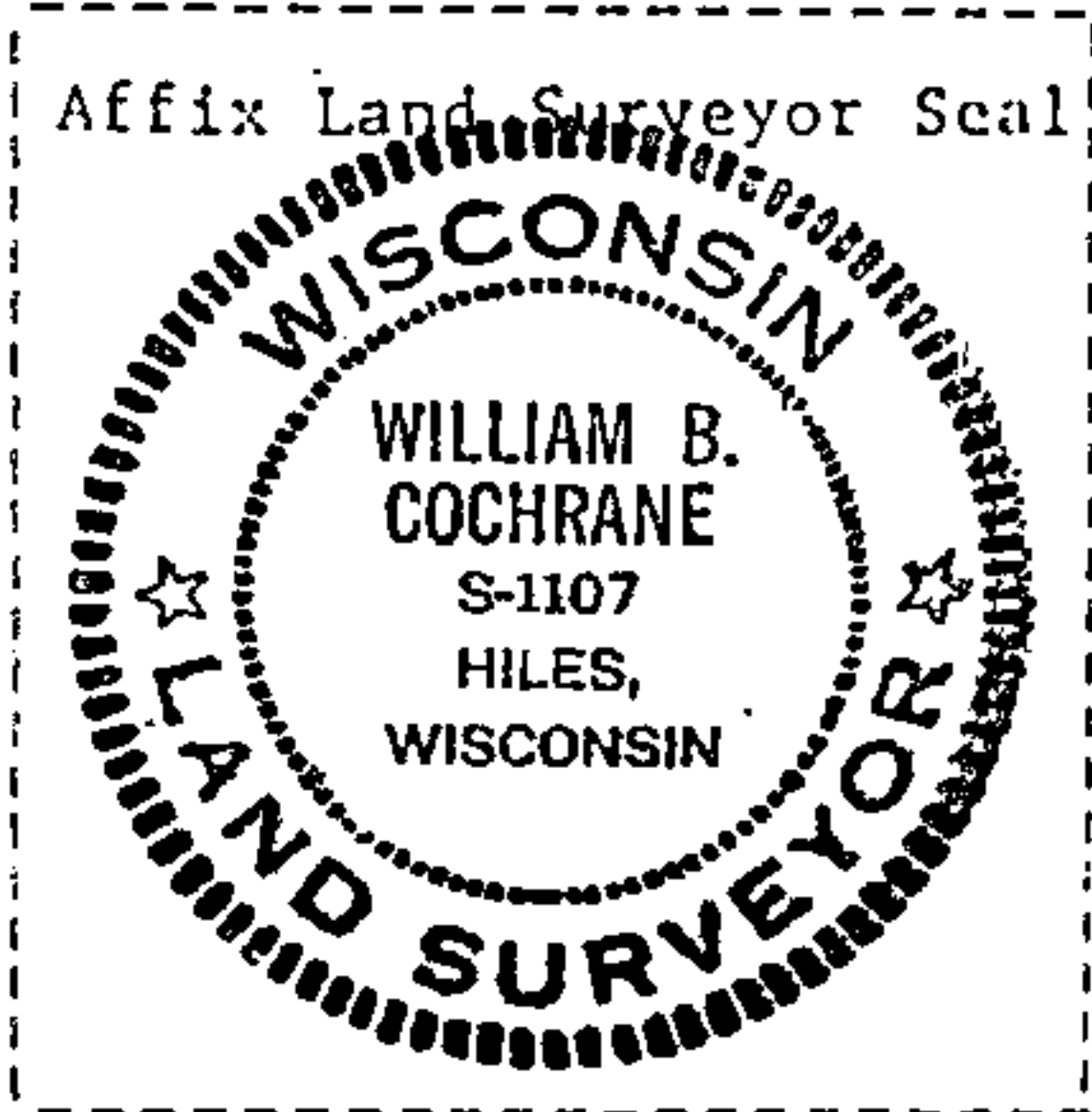
(f) Was the corner restored through acceptance of (1) an obliterated evidence location, or, (2) a found perpetuated location?

Restored from accepted evidence.

(g&h) Was the corner reestablished through lost corner proportionate methods? If so, show the method, including the directions and distances to other public land survey corners used as evidence or used for proportioning in determining the corner location?



R14E	R15E
S1	S6
S12	S7



(i) I, William B. Cochrane  
(type or print name) certify that the corner location shown on this record was determined by me or under my direction and control and that this U.S. Public Land Survey Monument Record is correct and complete to the best of my knowledge and belief.

William B. Cochrane October 7, 1986  
Signature Date

Survey requested by; Edward [Signature] 3-9-87  
District Ranger Date