

U.S. PUBLIC LAND SURVEY MONUMENT RECORD

Index No. E-13

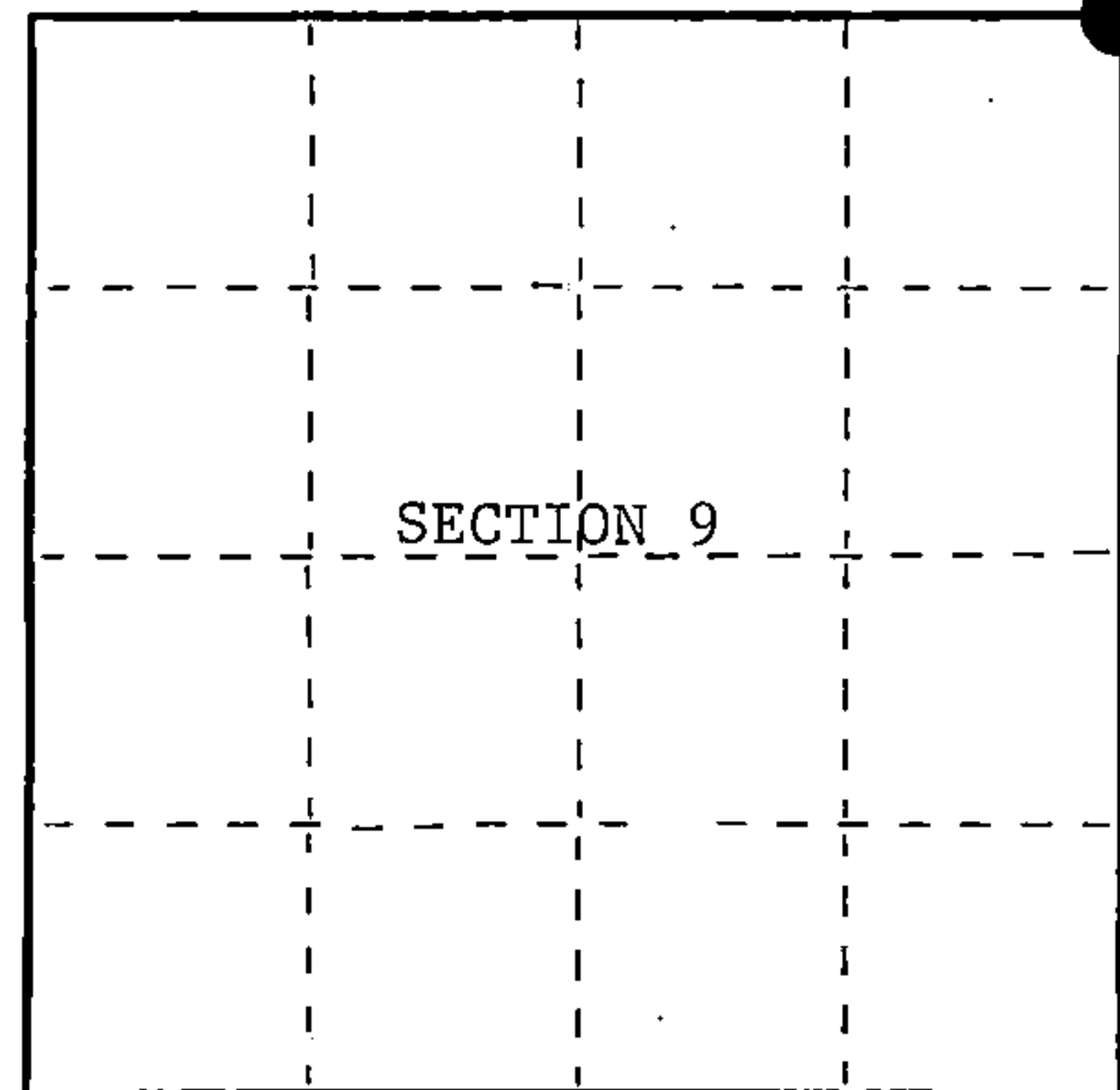
State of Wisconsin }
County of Forest } ss.

I, William B. Cochran, do hereby certify that on the 8th day of August, 1985, I found evidence of the Northeast Section corner of Section 9, Township 39 North, Range 14 East, Fourth Principal Meridian, as described hereon; and that from this evidence I established a new monument and accessories as described hereon to perpetuate the original location of this corner.

Resident witnesses:

Tony Tillman

State Plane Co-ordinates
N- 263,358.8040
E-2,321,471.3160



○ = Corner monument restored.

History of original corner establishment:

Original Government Survey in 1865 by William E. Daugherty and Alex McDill. North between Sections 9 and 10, at 80.00 chains, set Section Corner Post to Sections 3, 4, 9, and 10, from which the following bear;

Birch	8"	S60°W	22 lks.
Tamarack	15"	N69°E	26 lks.

Description of corner evidence found:

Found large Tamarack stump with overgrowth.
Found 14" Y. Birch with overgrowth.

I accept these bearing tree evidence as original.

The corner position is restored at a point which is N60°W, 22 lks. from the Birch, and S69°W, 26 lks. from the Tamarack stump.

Description of monument and accessories I established to perpetuate the original location of this corner.

From original bearing tree evidence, set a 2½ inch diameter aluminum pipe monument, 3 feet long, 2½ feet in the ground, with an aluminum cap stamped; T39N, R14E, S3, S4, S9, S10, 1986, S-1107. From which the following new blazed and scribed bearing trees bear;

Maple	12"	N44°E	60.63 feet
Spruce	18"	N18°W	69.93 feet
Steel Sign Post		South	0.50 feet

Dated at Hiles, Wis., this 11th day of February, 1987.

Signature William B. Cochran Title Land Surveyor Registration No. S-1107
(County Surveyor, Registered Land Surveyor, or other duly authorized official)

Office of Register of Deeds, County of Forest, I hereby certify that the within instrument was filed in this office for record on the 11th day of March, 1987 at 3:30 o'clock P. M.

Paul Aschendorfer
(Register of Deeds)

By Deputy

4-39 1404 0000

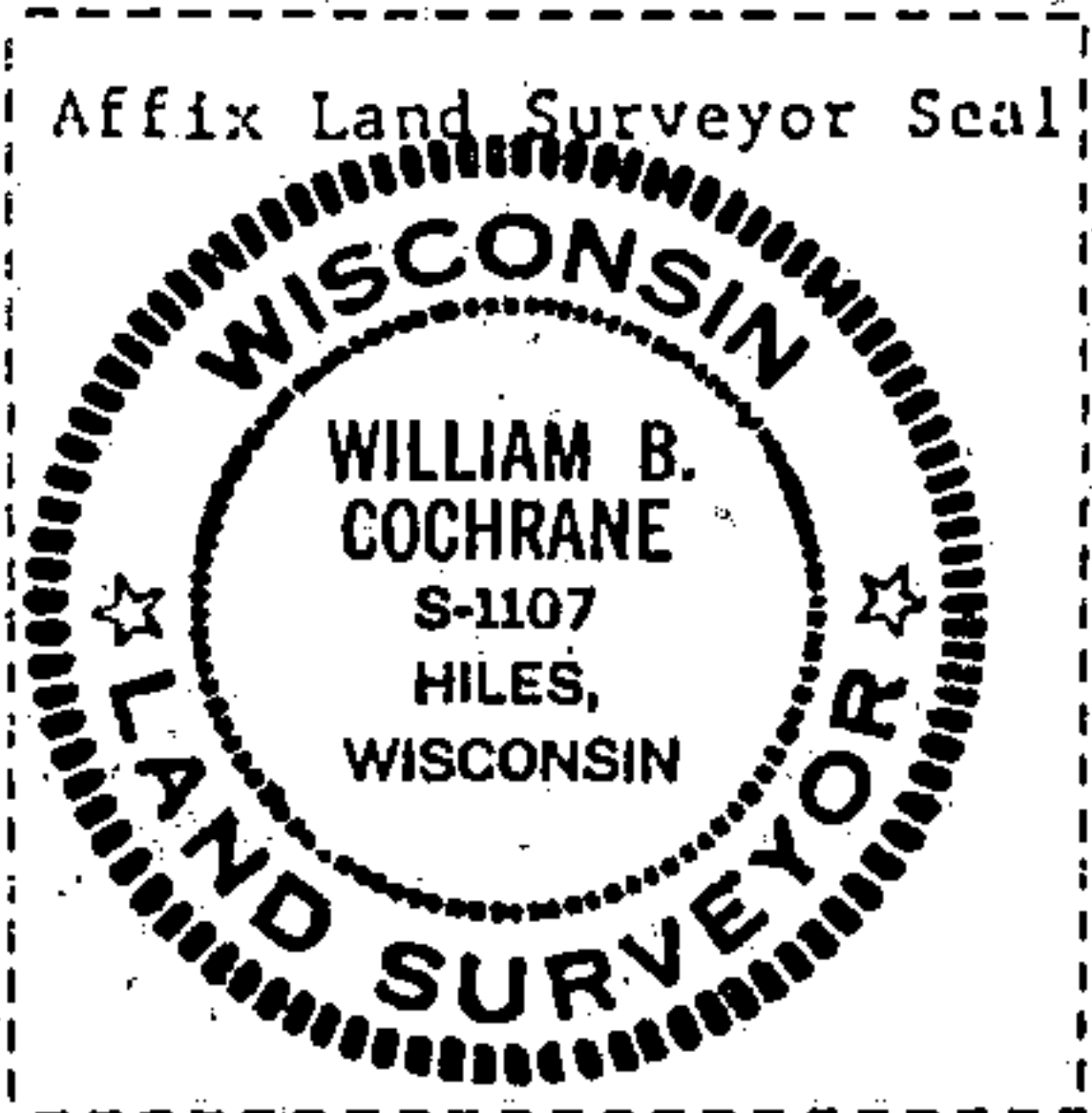
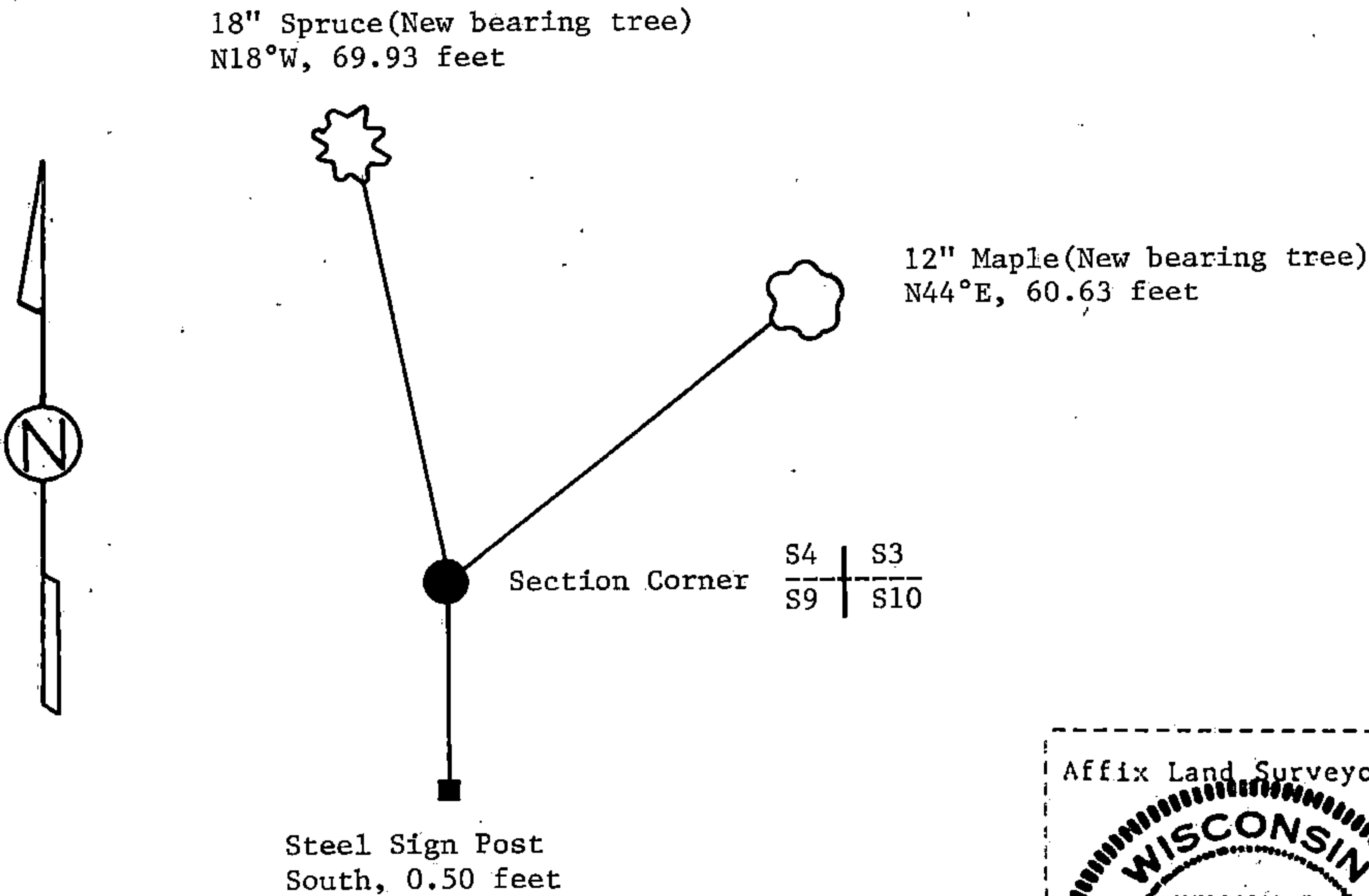
(e) Describe any material discrepancy between the location of the corner as restored or reestablished and the location of that corner as previously restored or reestablished by distance and direction. Show the discrepancy on the plan view drawing under (d), above. Show the distances between the corner as previously restored or reestablished and (1) the corner as restored or reestablished, and (2) to at least 2 of the witness monuments shown on the drawing in (d), above.

See drawing below

(f) Was the corner restored through acceptance of (1) an obliterated evidence location, or, (2) a found perpetuated location?

Restored from original evidence.

(g&h) Was the corner reestablished through lost corner proportionate methods? If so, show the method, including the directions and distances to other public land survey corners used as evidence or used for proportioning in determining the corner location?



(i) I, William B. Cochrane
(type or print name) certify that the corner location shown on this record was determined by me or under my direction and control and that this U.S. Public Land Survey Monument Record is correct and complete to the best of my knowledge and belief.

William B. Cochrane February 11, 1987
Signature Date

Survey requested by; [Signature] 3-9-87
District Ranger Date