

# U.S. PUBLIC LAND SURVEY MONUMENT RECORD

Index No. E-11

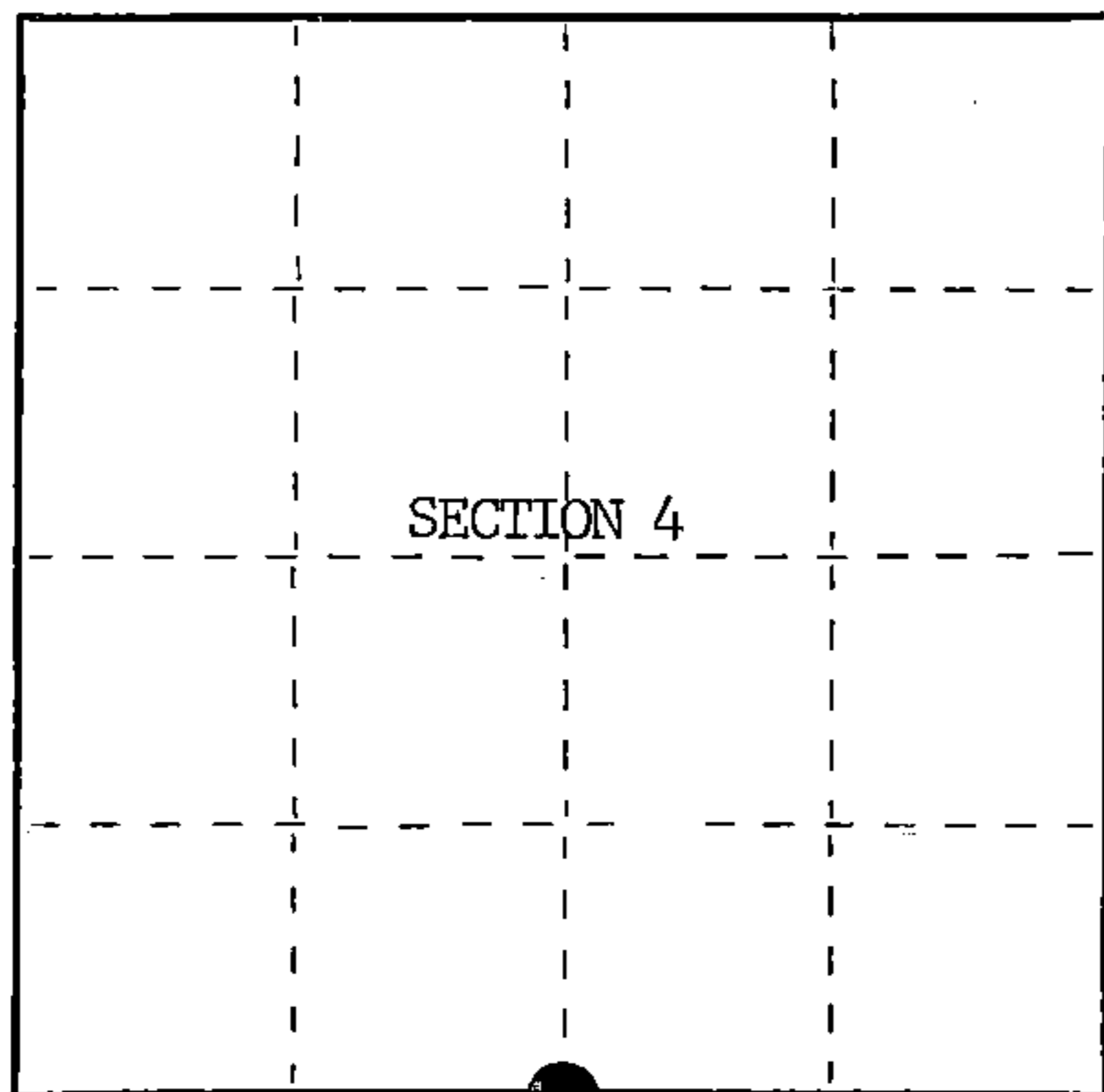
State of Wisconsin }  
County of Forest } ss.

I, William B. Cochrane, do hereby certify that on the 8th day of August, 1985, I found evidence of the South Quarter corner of Section 4 Township 39 North, Range 14 East, Fourth Principal Meridian, as described hereon; and that from this evidence I established a new monument and accessories as described hereon to perpetuate the original location of this corner.

Resident witnesses:

Tony Tillman

State Plane Co-ordinates  
N- 263,353.5410  
E-2,319,048.3190



○ = Corner monument restored.

History of original corner establishment:

Original Government Survey in 1865 by William E. Daugherty and Alex McDill. West corrected between Sections 4 and 9, 40.05 chains, set Quarter Section Post to Sections 4 and 9, from which the following bear;

|        |     |       |         |
|--------|-----|-------|---------|
| Spruce | 12" | N70°E | 27 lks. |
| Cedar  | 10" | S57°E | 16 lks. |

Description of corner evidence found:

Found 6"x6" wood post, from which a 16" Cedar bears N 2°W, 9 lks.

I accept the wood post and bearing tree evidence as the best available evidence for restoring the corner position.

No original corner evidence was recovered.

Description of monument and accessories I established to perpetuate the original location of this corner.

In place of wood post, set a 2½ inch diameter aluminum pipe monument, 5 feet long, 4 feet in the ground, with an aluminum cap stamped; T39N, R14E, 1/4, S4, S9, 1985, S-1107. From which the following new blazed and scribed bearing trees bear;

|                 |     |       |            |
|-----------------|-----|-------|------------|
| W. Birch        | 9"  | S38°W | 47.16 feet |
| Cedar           | 12" | N49°W | 67.60 feet |
| Steel Sign Post |     | NW    | 2.00 feet  |

Dated at Hiles, Wis., this 17th day of March, 1986.

Signature William B. Cochrane Title Land Surveyor Registration No. S-1107  
(County Surveyor, Registered Land Surveyor, or other duly authorized official)

Office of Register of Deeds, County of Forest, I hereby certify that the within instrument was filed in this office for record on the 11th day of March, 1987 at 3:30 o'clock P. M.

Paul Achenbrenner  
(Register of Deeds)

By Deputy

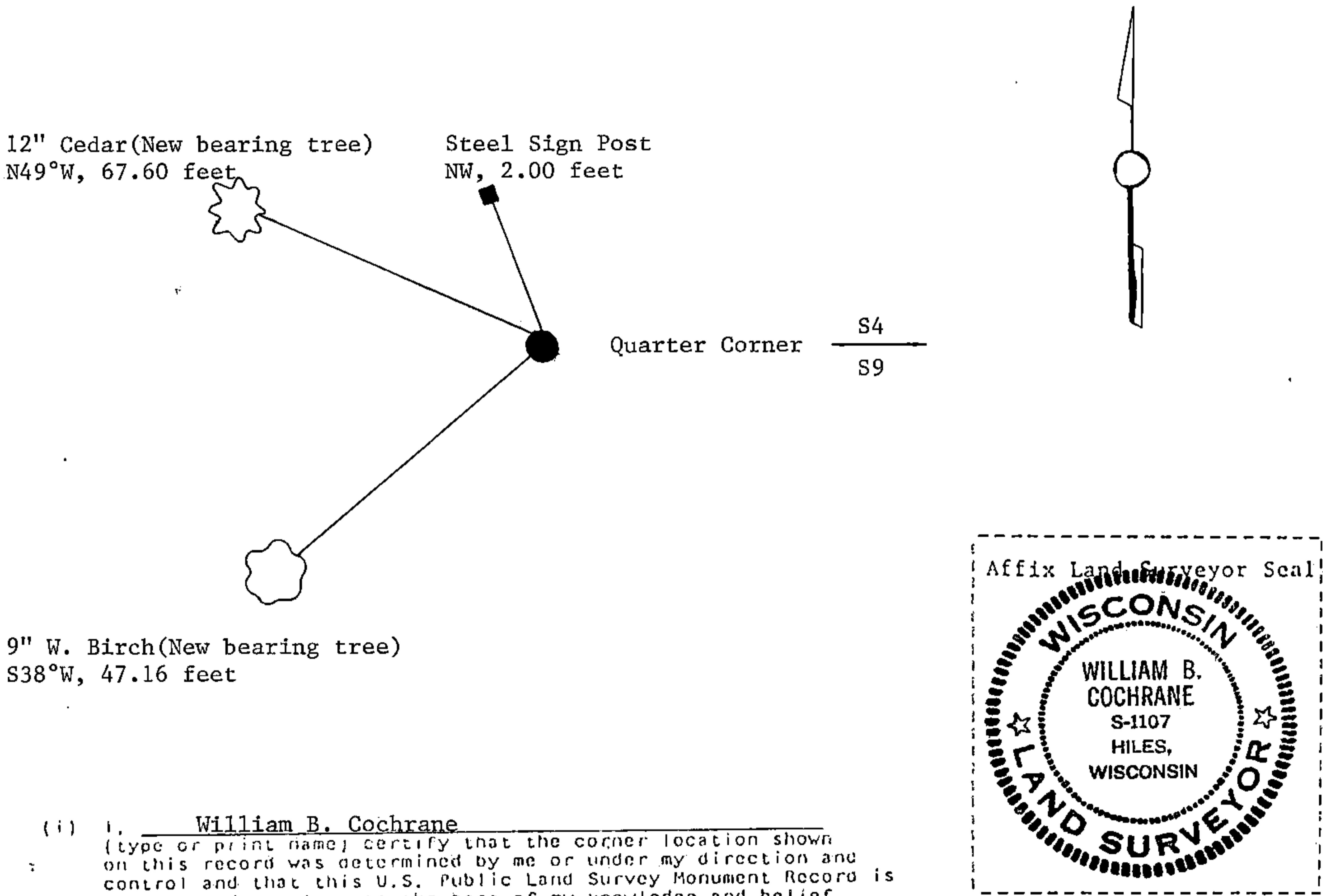
(e) Describe any material discrepancy between the location of the corner as restored or reestablished and the location of that corner as previously restored or reestablished by distance and direction. Show the discrepancy on the plan view drawing under (d), above. Show the distances between the corner as previously restored or reestablished and (1) the corner as restored or reestablished, and (2) to at least 2 of the witness monuments shown on the drawing in (d), above.

See drawing below.

(f) Was the corner restored through acceptance of (1) an obliterated evidence location, or, (2) a found perpetuated location?

Restored from accepted evidence.

(g&h) Was the corner reestablished through lost corner proportionate methods? If so, show the method, including the directions and distances to other public land survey corners used as evidence or used for proportioning in determining the corner location?



(i) I, William B. Cochrane  
(type or print name) certify that the corner location shown  
on this record was determined by me or under my direction and  
control and that this U.S. Public Land Survey Monument Record is  
correct and complete to the best of my knowledge and belief.

William B. Cochrane October 7, 1986  
Signature Date

Survey requested by: Edward LaSalle 3-9-87  
District Ranger Date