

CERTIFIED LAND CORNER RESTORATION

State of Wisconsin

County of Forest

ss.

I William B. Cochrane, do hereby certify that on the 11 day of May, 1977, I found evidence of the Northeast Section corner of Section 8 Township 39 North, Range 14 East, Fourth Principal Meridian, as described hereon; and that from this evidence I established a new monument and accessories as described hereon to perpetuate the original location of this corner:

Description of original monument and accessories and subsequent restorations:

Surveyed in 1865 by William E. Daugherty
80.00 chains North between Sections 8 and 9, set post
Spruce 7, N50W, 9 lks.
Birch 7, S60E, 13 lks.

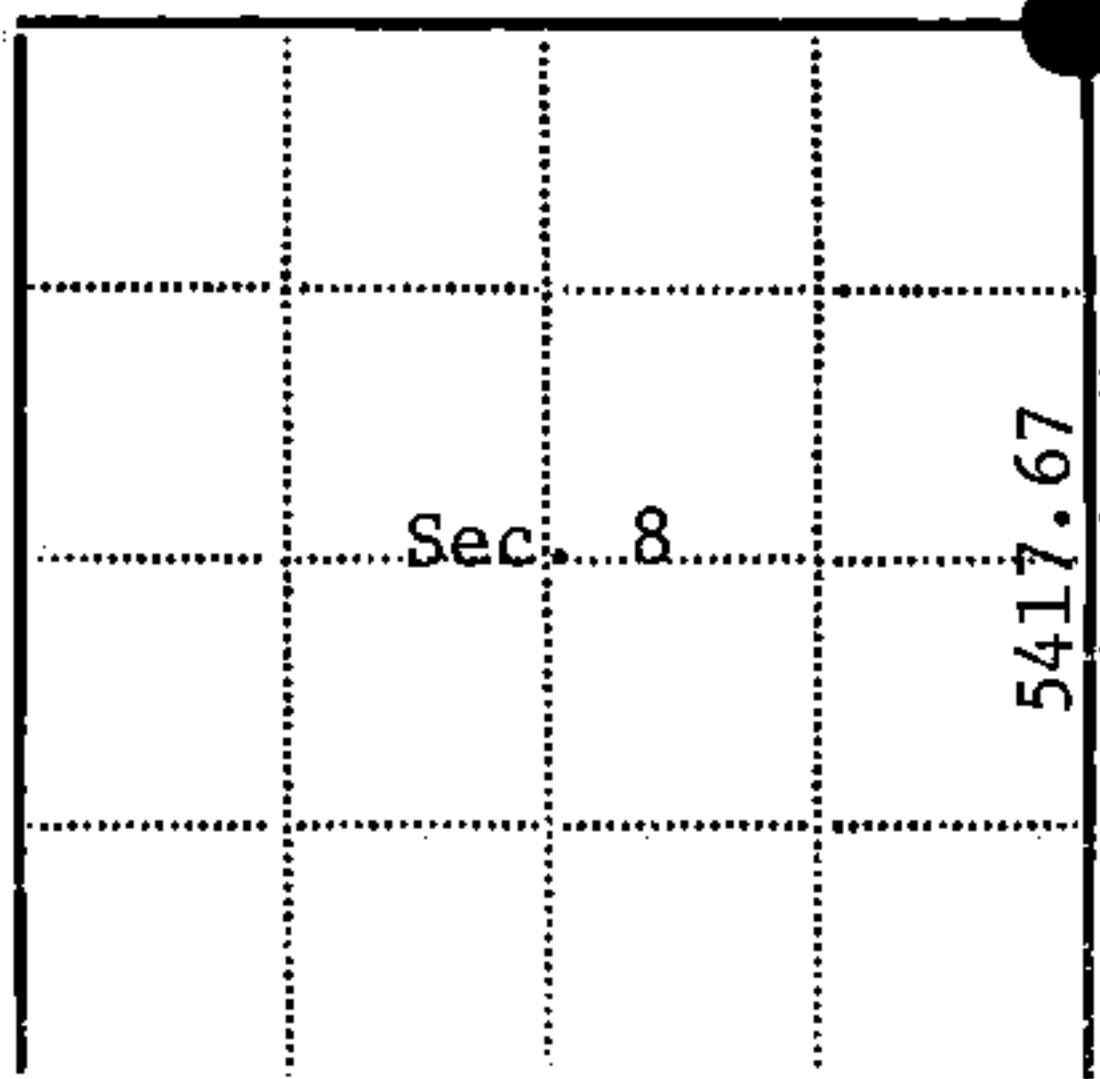
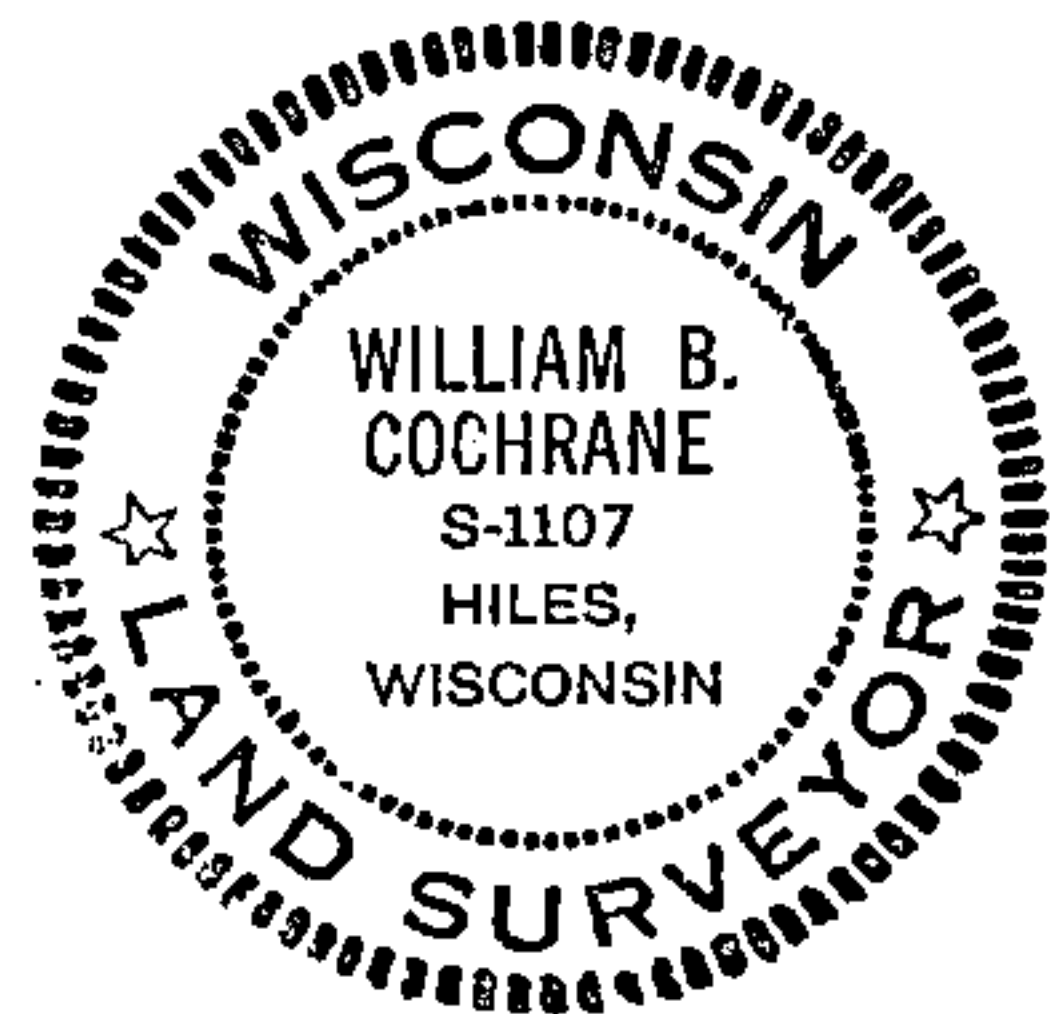
Description of corner evidence found:

5x5 scribed cedar post
Rotted stump N50W, 9 lks.
Tamarack 5, Dead and fallen, N60W, 8 lks.
Chained west 40 chains found quarter corner
Distance North and South to section corners check.
Post has been in place 40 to 50 years and is accepted as being the true point for corner.

Description of monument and accessories I established to perpetuate the location of this corner:

Replaced post with a 2 inch inside diameter, galvanized iron pipe,
3 feet long, filled with concrete, with brass cap stamped:
T39N, R14E, S5, S4, S8, S9, 1977, S-1107

Blazed and scribed the following new bearing trees
Spruce 16, N87E, 16.99 ft.
Tamarack 7, S21E, 9.29 ft.
Spruce 8, S49W, 46.55 ft.
Spruce 9, N79W, 20.36 ft.



● - Corner monument restored
□ -

Resident witnesses

Dated at Laona Wisconsin, this 21 day of July 1977.

Signature William B. Cochrane Title Survey Technician
(County Surveyor, Registered Land Surveyor, or other duly authorized official)

Surveyors Registration No. S-1107 DOCUMENT NUMBER 113307

Office of Register of Deeds County of Forest

I hereby certify that the within instrument was filed in this office for record on the 13th day of February 1978, and was filed in Book No. Page No. of County Records.

Signature Eugene Stutzman Title Register of Deeds

Township 39 North, Range 14 East, Section 8, Index No. E-9, Page No.

43914050000

6