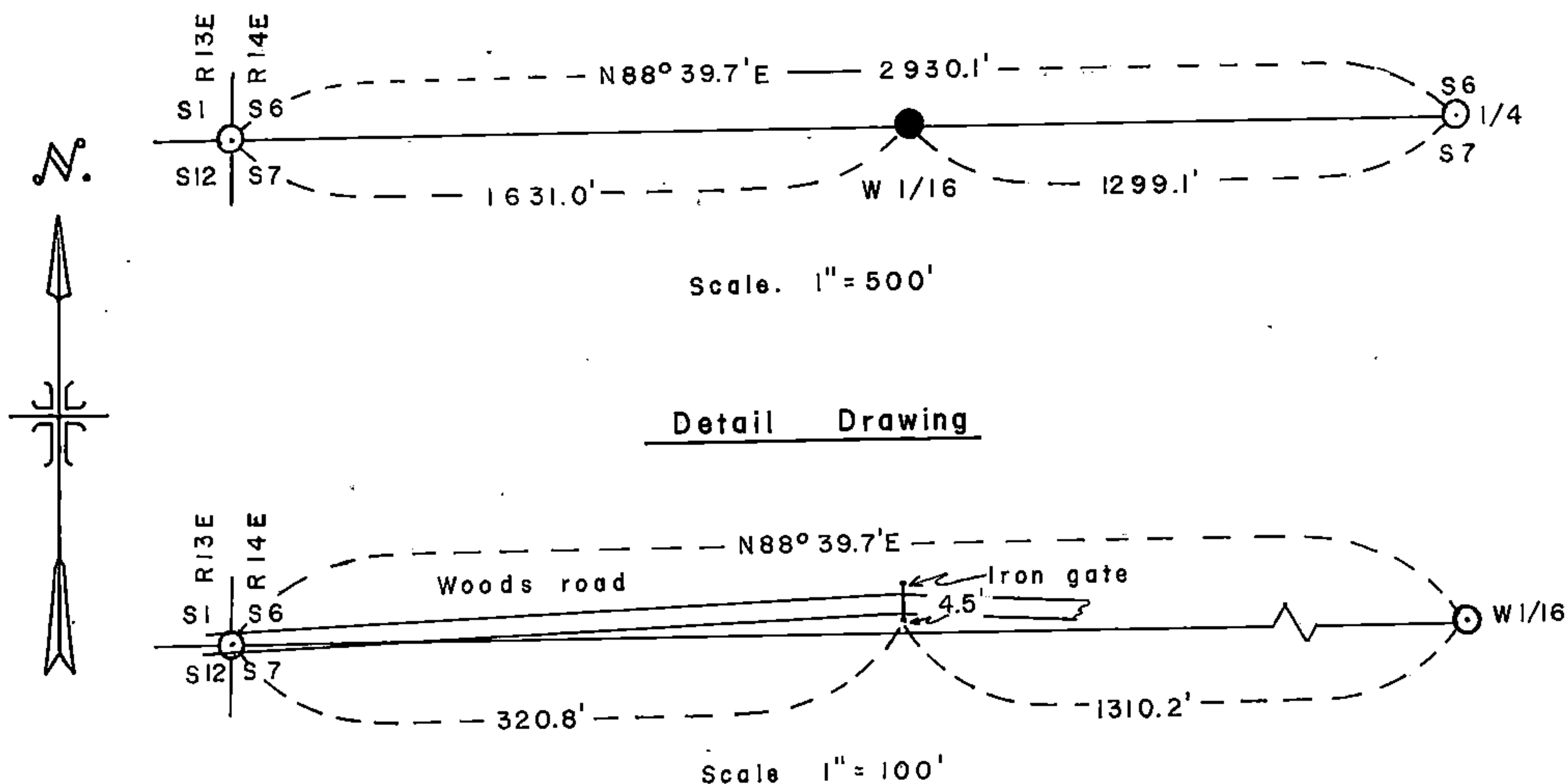


Stock No. 26273

Sheet 1 of 2 (E-2)

CERTIFIED LAND CORNER RESTORATION CERTIFICATE

BEING THE WEST SIXTEENTH CORNER BETWEEN THE
SOUTH QUARTER CORNER AND THE SOUTHWEST SECTION CORNER
OF SECTION 6, TOWNSHIP 39 NORTH, RANGE 14 EAST,
FOURTH PRINCIPAL MERIDIAN, COUNTY OF FOREST,
STATE OF WISCONSIN

LEGEND

● - 2 1/2 inch diameter aluminum pipe monument, 30 inches long with an aluminum cap stamped to identify the corner.

○ - Corners monumented and recorded.

SURVEY NOTES

This survey of the line between the south quarter corner and the southwest section corner of Section 6, T39N, R14E, Fourth Principal Meridian was made by the U.S. Department of Agriculture, Forest Service. All bearings are true bearings referenced to solar observations.

CORNER ESTABLISHED1. West Sixteenth between Sections 6 and 7.

Established the west sixteenth corner by single proportion on line between the south quarter corner and the southwest section corner of Section 6.

Corner References:

Maple	8"	N26°E	27.08 ft.
Maple	7"	S45°E	2.15 ft.
1 1/4 inch diameter Iron Pipe		S76°47.4'W	15.17 ft.
Steel Sign Post		North	0.70 ft.

DOCUMENT NO.
119751

REGISTER'S OFFICE }
Forest County, Wis. } 12th
Received for record this 12 day
of May A.D. 1981 at
2:30 o'clock P.M. and recorded
in Vol. of CORNER
page E-2 RESTORATION

Eugene J. Stetson
Register of Deeds

4.39.14060030

Stock No. 26273

Sheet 2 of 2 (E-2)

CORNERS RESTORED

1. South Quarter Corner Between Sections 6 and 7.

Previously Recorded

2. Section Corner Common to Sections 1,6,7 and 12, Ranges 13 and 14 East.

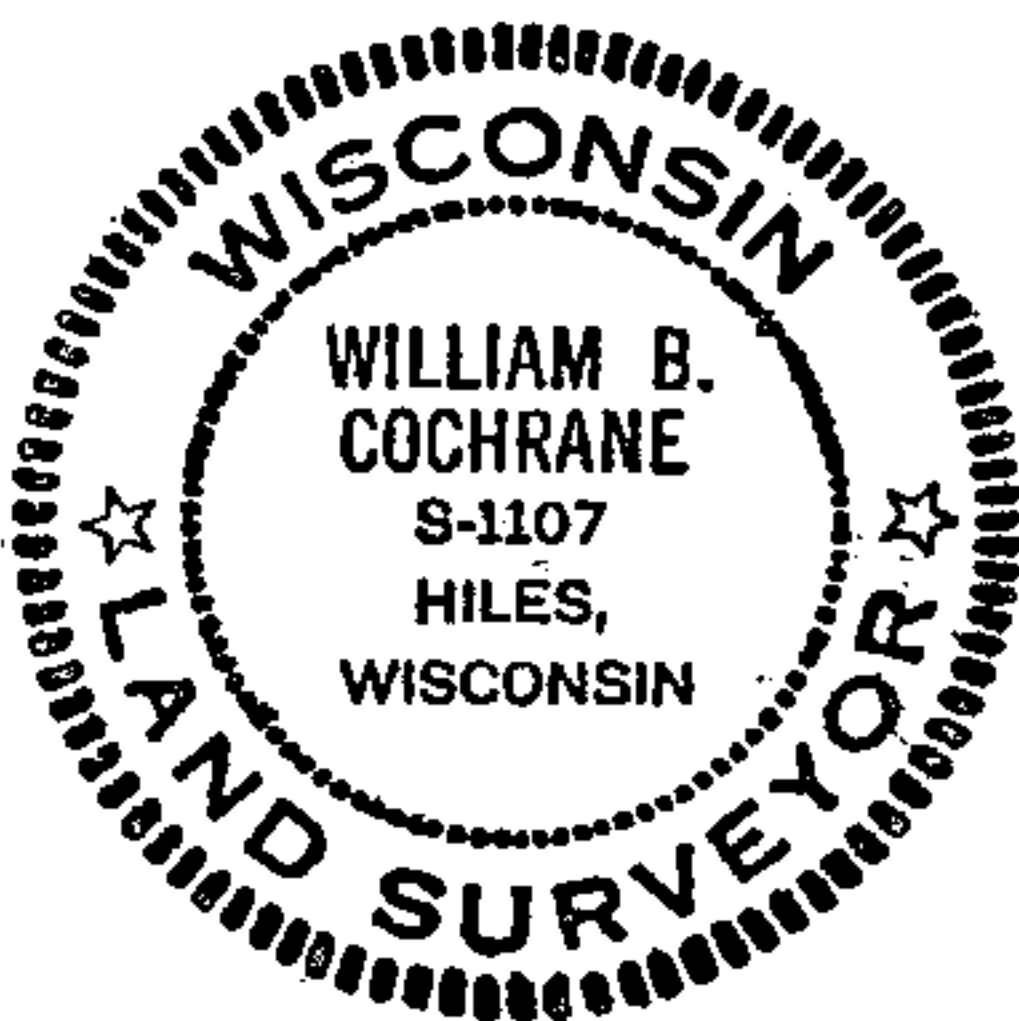
Previously Recorded

SURVEYOR'S AFFIDAVIT

State of Wisconsin)
County of Forest) ss

I, William B. Cochrane, Land Surveyor, U.S. Forest Service and a Registered Land Surveyor in the State of Wisconsin hereby certify that I have surveyed the line between the south quarter corner and the southwest section corner of Section 6, Township 39 North, Range 14 East, Fourth Principal Meridian, State of Wisconsin.

The plat map and the survey notes are a correct representation of the corners recovered, restored and established.



William B. Cochrane
Land Surveyor, U.S. Forest Service
R.L.S. State of Wisconsin
Certificate S-1107

Date of Survey: 1981