

## U.S. PUBLIC LAND SURVEY MONUMENT RECORD

Index No. J-11

State of Wisconsin }  
County of Forest } ss.

I William B. Cochran, do hereby  
certify that on the 6th day  
of August, 1985, I found  
evidence of the North Quarter  
corner of Section 16  
Township 39, North, Range  
14 East, Fourth Principal Meridian,  
as described hereon; and that from this evidence  
I established a new monument and accessories  
as described hereon to perpetuate the original  
location of this corner.

Resident witnesses:

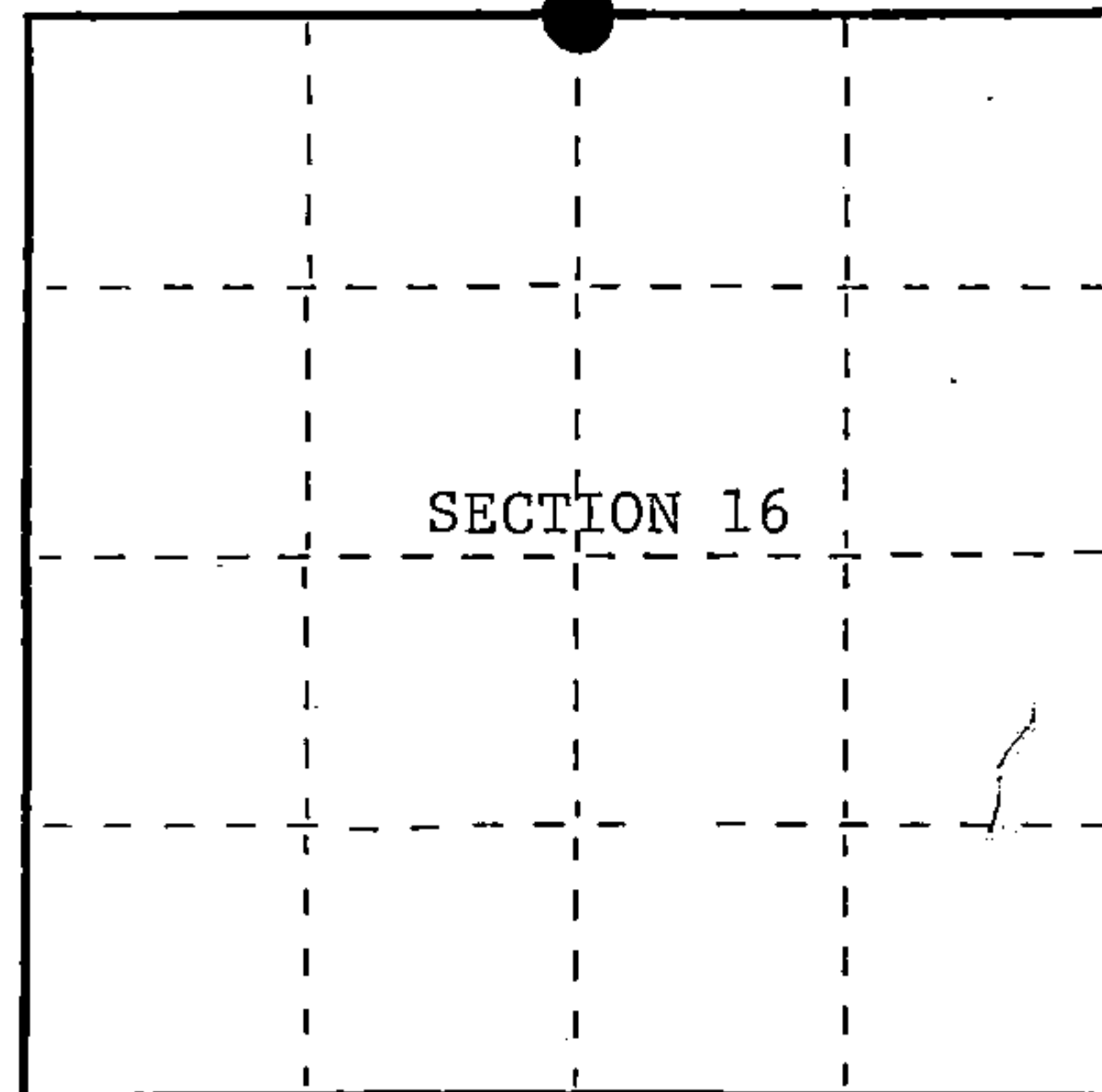
Tony Tillman

David Brownell

State Plane Co-ordinates

N- 257,992.9469

E-2,319,040.5940



○ = Corner monument restored.

History of original corner establishment:

Original Government Survey in 1865 by William E. Daugherty and Alex McDill.  
West corrected between Sections 9 and 16, at 40.18 chains, set Quarter Section  
Post to Sections 9 and 16, from which the following bear;

Birch	10"	N60°W	38 lks.
Maple	7"	South	10 lks.

Description of corner evidence found:

No corner evidence was recovered.

The corner position is re-established at proportionate distance and on line  
between the Northeast and Northwest Section Corners of Section 16.

Description of monument and accessories I established to perpetuate the original location of this corner.

At the corner position, set a 2½ inch diameter aluminum pipe monument, 5 feet long,  
3½ feet in the ground, with an aluminum cap stamped; T39N, R14E, 1/4, S9, S16,  
1986, S-1107. From which the following bear;

River Bank	East	40.00 feet
High Point on NE corner of rock	N10°E	267.62 feet
Steel Sign Post	South	1.00 feet

Dated at Hiles, Wis., this 11th day of February, 1987Signature William B. Cochran Title Land Surveyor Registration No. S-1107  
(County Surveyor, Registered Land Surveyor, or other duly authorized official)

Office of Register of Deeds, County of Forest, I hereby certify that the within  
instrument was filed in this office for record on the 11th day of March, 1987  
at 3:30 o'clock P. M.

Paul Aschenbrenner  
(Register of Deeds)

By \_\_\_\_\_ Deputy

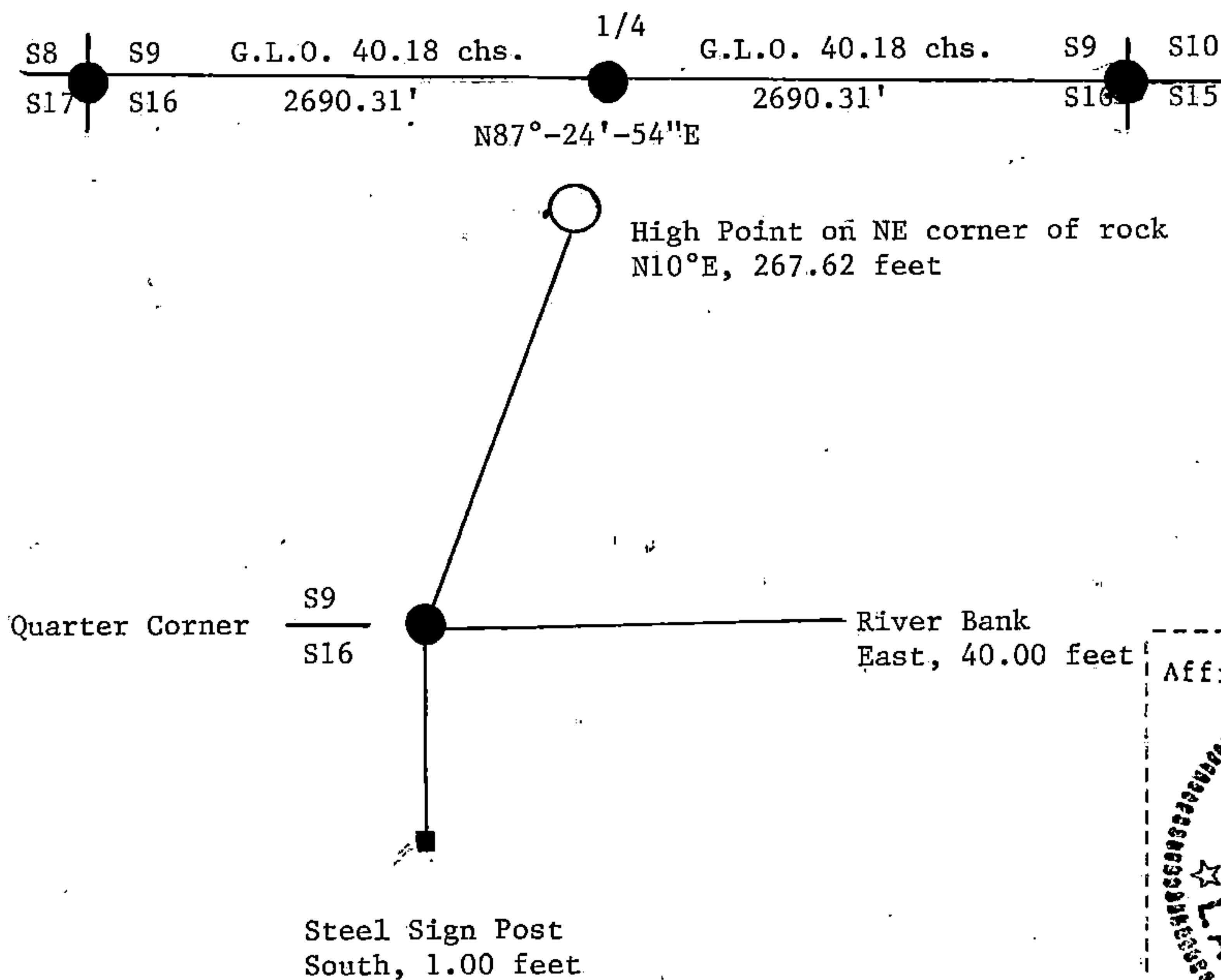
- (e) Describe any material discrepancy between the location of the corner as restored or reestablished and the location of that corner as previously restored or reestablished by distance and direction. Show the discrepancy on the plan view drawing under (d), above. Show the distances between the corner as previously restored or reestablished and (1) the corner as restored or reestablished, and (2) to at least 2 of the witness monuments shown on the drawing in (d), above.

See drawing below.

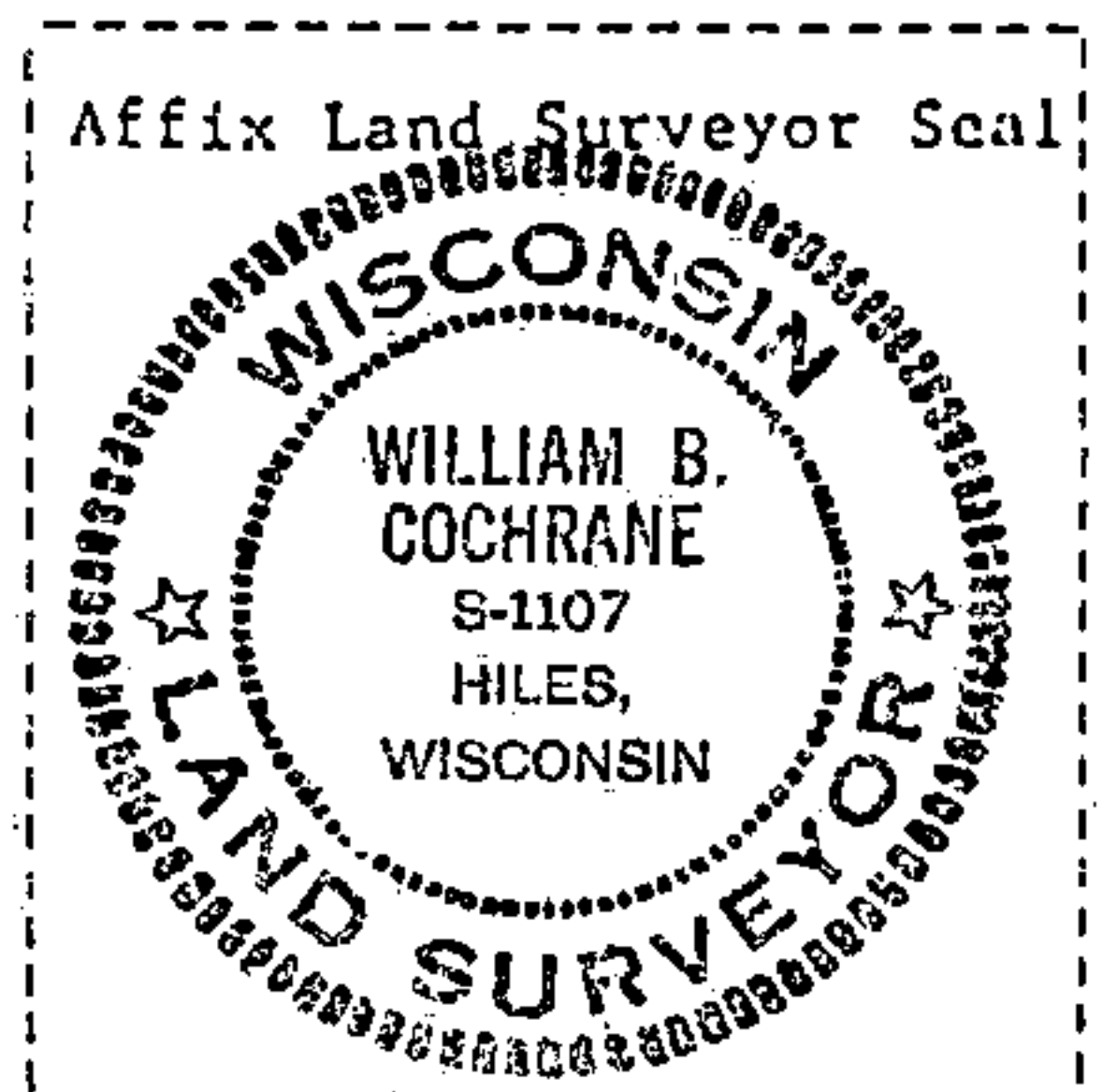
- (f) Was the corner restored through acceptance of (1) an obliterated evidence location, or, (2) a found perpetuated location?

- (g&h) Was the corner reestablished through lost corner proportionate methods? If so, show the method, including the directions and distances to other public land survey corners used as evidence or used for proportioning in determining the corner location?

This corner position was re-established using State Plane Co-ordinates computed from Aerial Photography and a Global Positioning Satellite Survey. The computed corner position was located in the field using a North Seeking Gyro, an Electronic Distance Meter, and/or a steel tape.



- (i) I, William B. Cochrane  
(type or print name) certify that the corner location shown on this record was determined by me or under my direction and control and that this U.S. Public Land Survey Monument Record is correct and complete to the best of my knowledge and belief.



William B. Cochrane February 14, 1987  
Signature Date

Survey requested by: Edward [Signature] 3-9-87  
District Ranger Date