

## U.S. PUBLIC LAND SURVEY MONUMENT RECORD

Index No. N-7

State of Wisconsin }  
 County of Forest } ss.

I William B. Cochrane, do hereby  
 certify that on the 29th day  
 of October, 1986, I found  
 evidence of the North Quarter  
 corner of Section 20  
 Township 39, North, Range  
14 East, Fourth Principal Meridian,  
 as described hereon; and that from this evidence  
 I established a new monument and accessories  
 as described hereon to perpetuate the original  
 location of this corner.

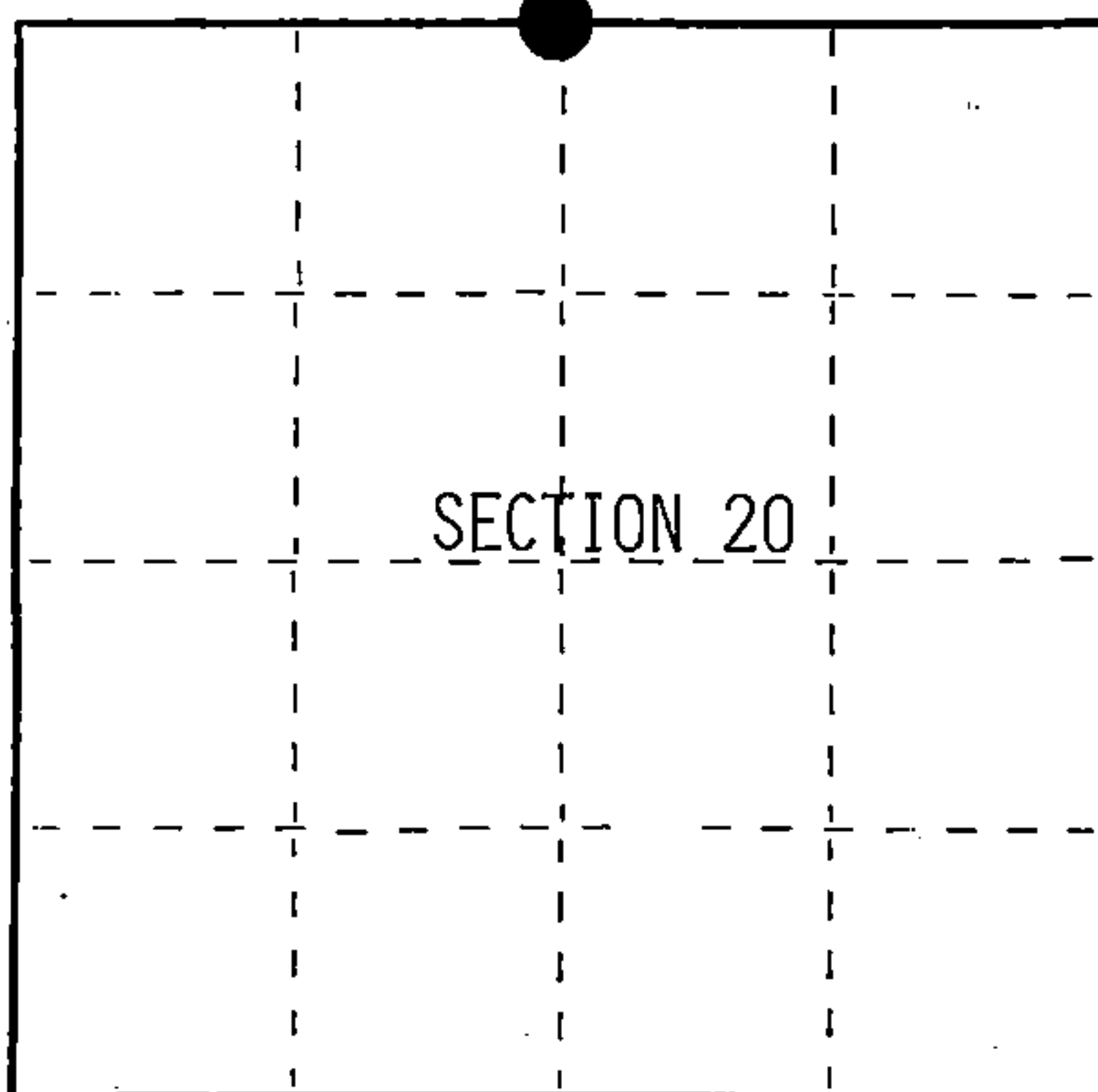
Resident witnesses:

Tony Tillman

State Plane Co-ordinates

N- 252,455.1628

E-2,313,886.4710



○ = Corner monument restored.

## History of original corner establishment:

Original Government Survey in 1865 by William E. Daugherty and Alex McDill.  
 West corrected between Sections 17 and 20, at 40.12 chains, set Quarter Section  
 Post to Sections 17 and 20, from which the following bear;

|       |     |       |         |
|-------|-----|-------|---------|
| Sugar | 12" | N27°E | 18 lks. |
| Sugar | 18" | S29°W | 31 lks. |

## Description of corner evidence found:

No corner evidence was recovered.

The corner position is re-established at proportionate distance between the Northeast  
 and Northwest Section Corners of Section 20, and in the Center-Line of F.R. #2168.

## Description of monument and accessories I established to perpetuate the original location of this corner.

Corner position is not monumented.

At a point N2°W, 41.96', set a 2½ inch diameter aluminum pipe monument, 3 feet long,  
 2½ feet in the ground, with an aluminum cap stamped; T39N, R14E, Reference Monument,  
 1/4, S17, S20, 41.96', 1986, S-1107. From which a Steel Sign Post bears North, 0.50 feet.

From the corner position, the following new blazed and scribed bearing trees bear;

|                 |    |       |            |
|-----------------|----|-------|------------|
| Maple           | 8" | S48°E | 59.97 feet |
| Maple           | 7" | S30°W | 58.15 feet |
| Steel Sign Post |    | N 2°W | 42.46 feet |

Dated at Hiles, Wis., this 25th day of May, 1987

Signature William B. Cochrane Title Land Surveyor Registration No. S-1107  
 (County Surveyor, Registered Land Surveyor, or other duly authorized official)

Office of Register of Deeds, County of Forest, I hereby certify that the within  
 instrument was filed in this office for record on the 18th day of March, 1988  
 at 12:50 o'clock P. M.

Paul Achenbrenner  
 (Register of Deeds)

By \_\_\_\_\_ Deputy

FORM NO. 985-A

H.C. Miller Company  
 MILWAUKEE, WISCONSIN

Stock No. 26273

DOCUMENT NUMBER 134836

43914170020

- (e) Describe any material discrepancy between the location of the corner as restored or reestablished and the location of that corner as previously restored or reestablished by distance and direction. Show the discrepancy on the plan view drawing under (d), above. Show the distances between the corner as previously restored or reestablished and (1) the corner as restored or reestablished, and (2) to at least 2 of the witness monuments shown on the drawing in (d), above.

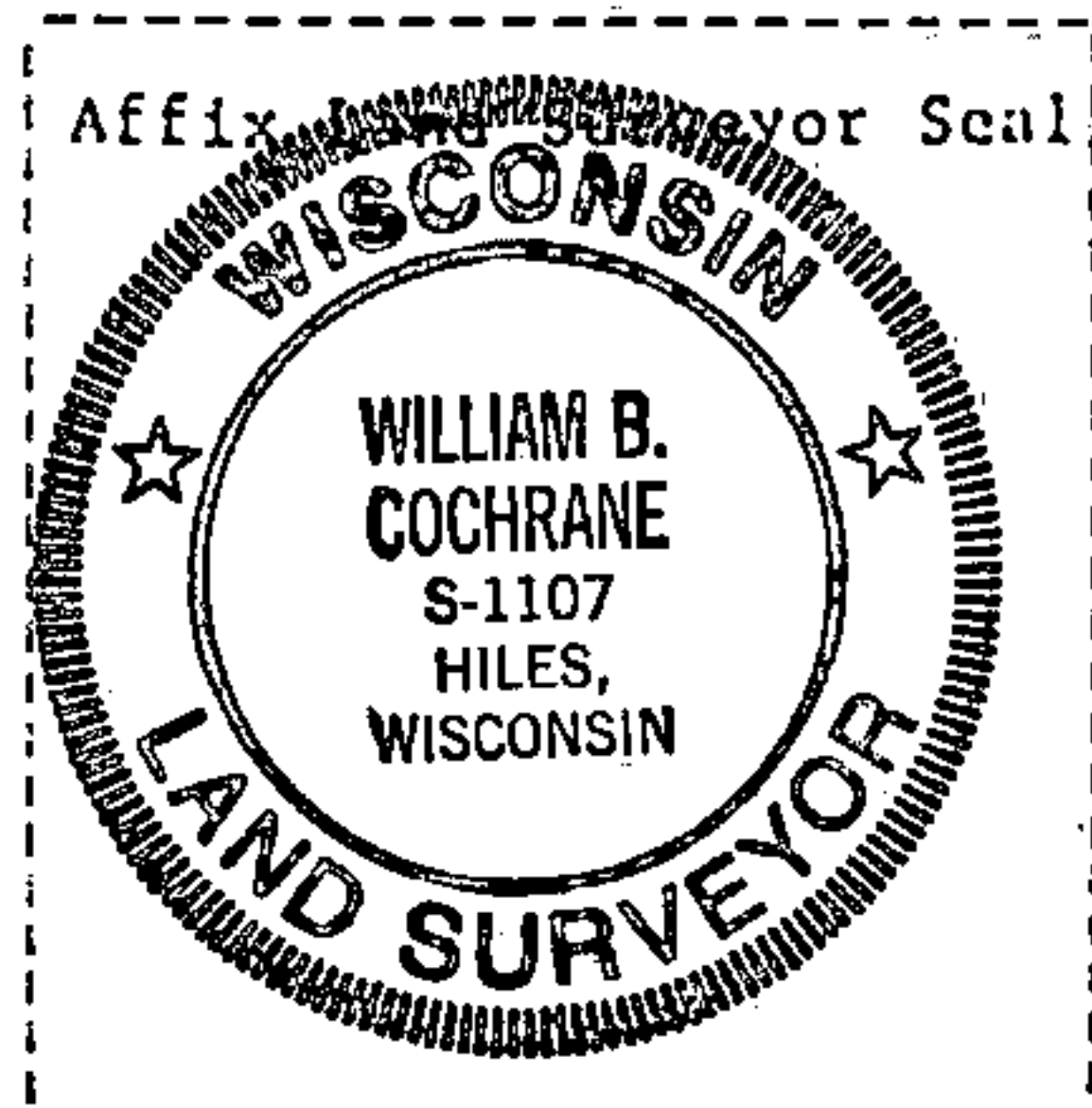
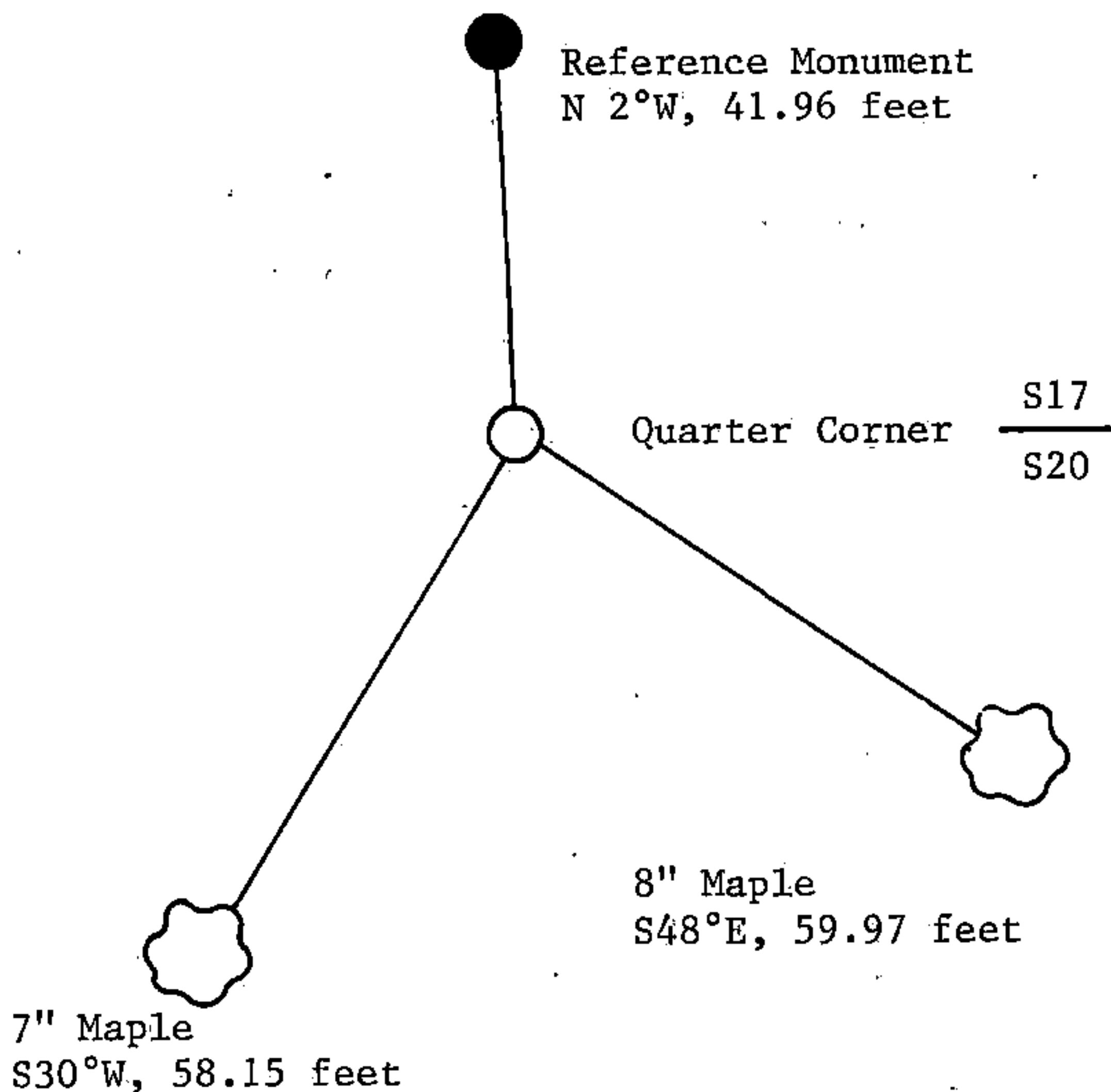
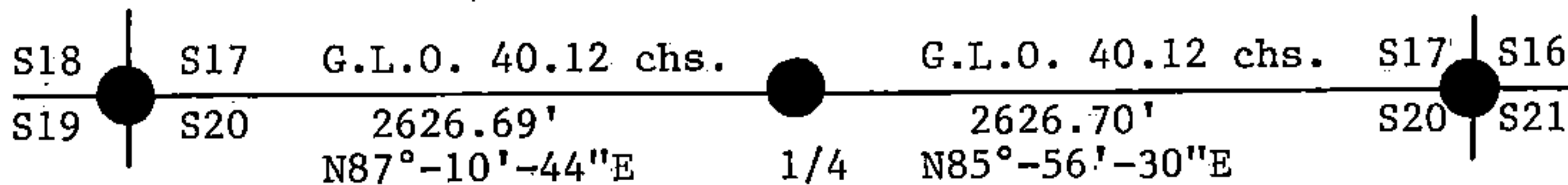
See drawing below.

- (f) Was the corner restored through acceptance of (1) an obliterated evidence location, or, (2) a found perpetuated location?

Re-established through lost corner proportionate methods and Center-Line of Road

This corner position was re-established using State Plane Co-ordinates computed from Aerial Photography and a Global Positioning Satellite Survey. The computed corner position was located in the field using a North Seeking Gyro, an Electronic Distance Meter, and/or a steel tape.

- (g&h) Was the corner reestablished through lost corner proportionate methods? If so, show the method, including the directions and distances to other public land survey corners used as evidence or used for proportioning in determining the corner location?



- (i) I, William B. Cochrane  
(type or print name) certify that the corner location shown on this record was determined by me or under my direction and control and that this U.S. Public Land Survey Monument Record is correct and complete to the best of my knowledge and belief.

William B. Cochrane May 25, 1987  
Signature Date

Survey requested by: Edward Geiger 3-8-88  
District Ranger Date