

CERTIFIED LAND CORNER RESTORATION

State of Wisconsin

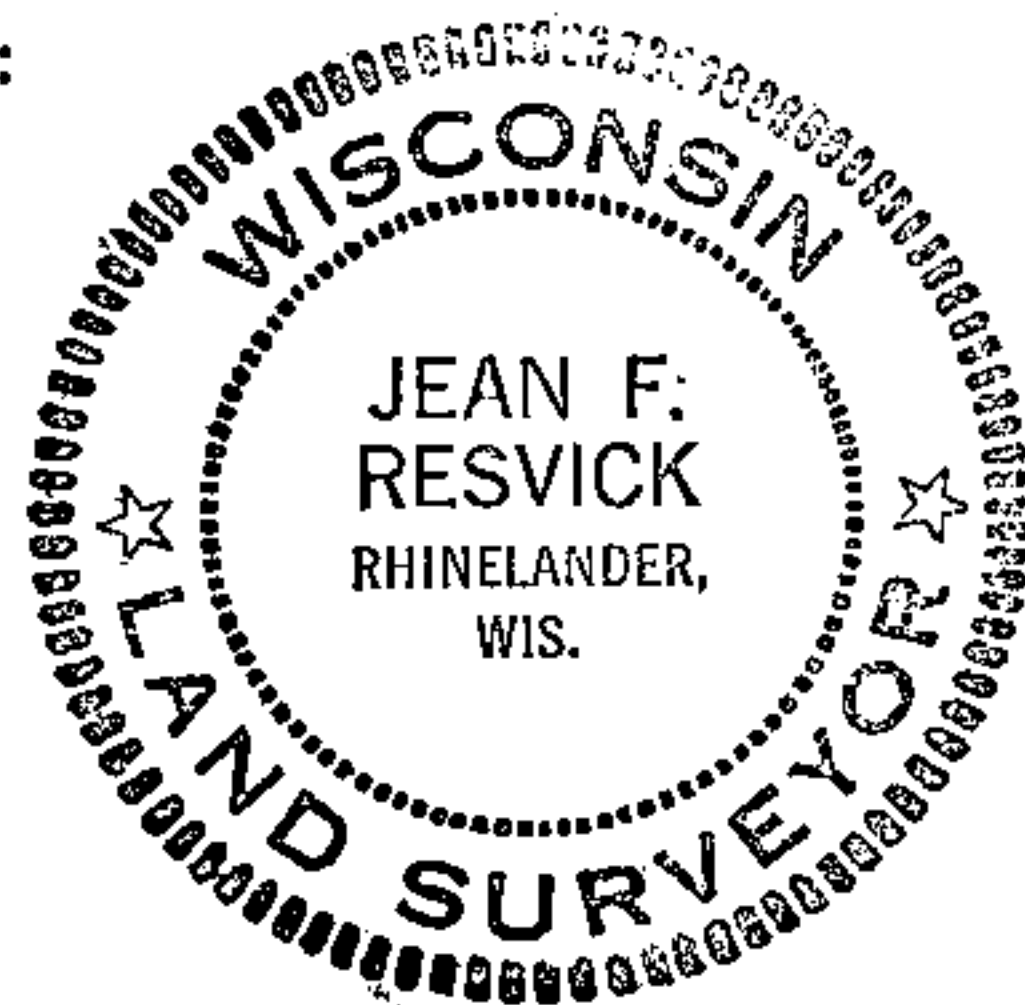
County of Forest

ss.

I Jean F. Resvick, do hereby certify that on the 25th day of April, 1967, I found evidence of the Northeast corner of Section 30 Township 39 North, Range 14 East, Fourth Principal Meridian, as described hereon; and that from this evidence I established a new monument and accessories as described hereon to perpetuate the original location of this corner:

Description of original monument and accessories and subsequent restorations:

Original survey by Alfred Millard in 1857.
 North 80.0 chains between Sections 29 and 30.
 Set wood post between Sections 19, 20, 29 and 30.
 Sugar 12 inches, bears N46°W, 29 links.
 Sugar 16 inches, bears S28°E, 17 links.



Description of corner evidence found:

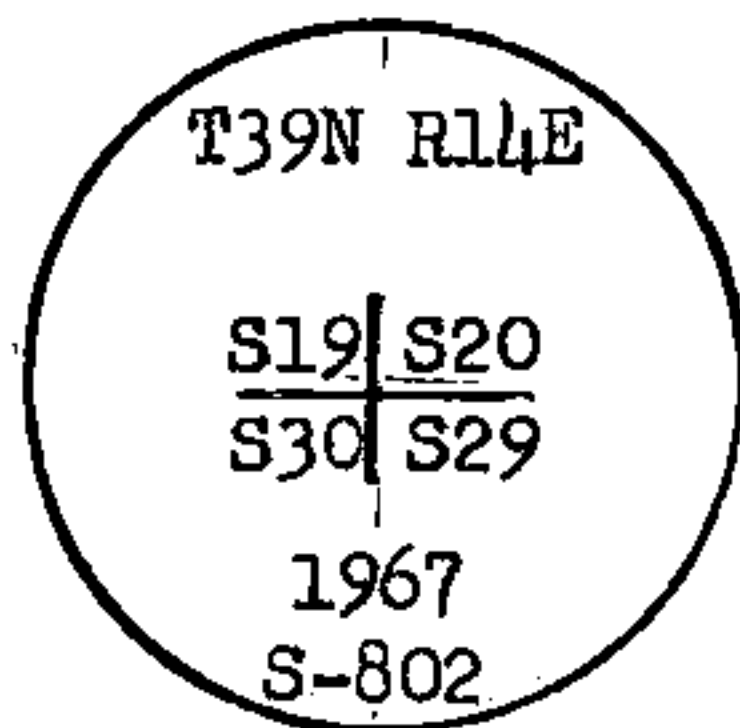
Robert Kolby, registered surveyor for Connor Lumber Company, found original sugar bearing tree stump with scribing visible. Three posts were found, none of which check with bearing tree.

The following men assisted with the finding and setting of this corner:

Robert Mentz, Crandon, Wisconsin
 Earl Mullins, Crandon, Wisconsin
 Ken Mullins, Crandon, Wisconsin
 Wayne Falk, Florence, Wisconsin

Description of monument and accessories I established to perpetuate the original location of this corner:

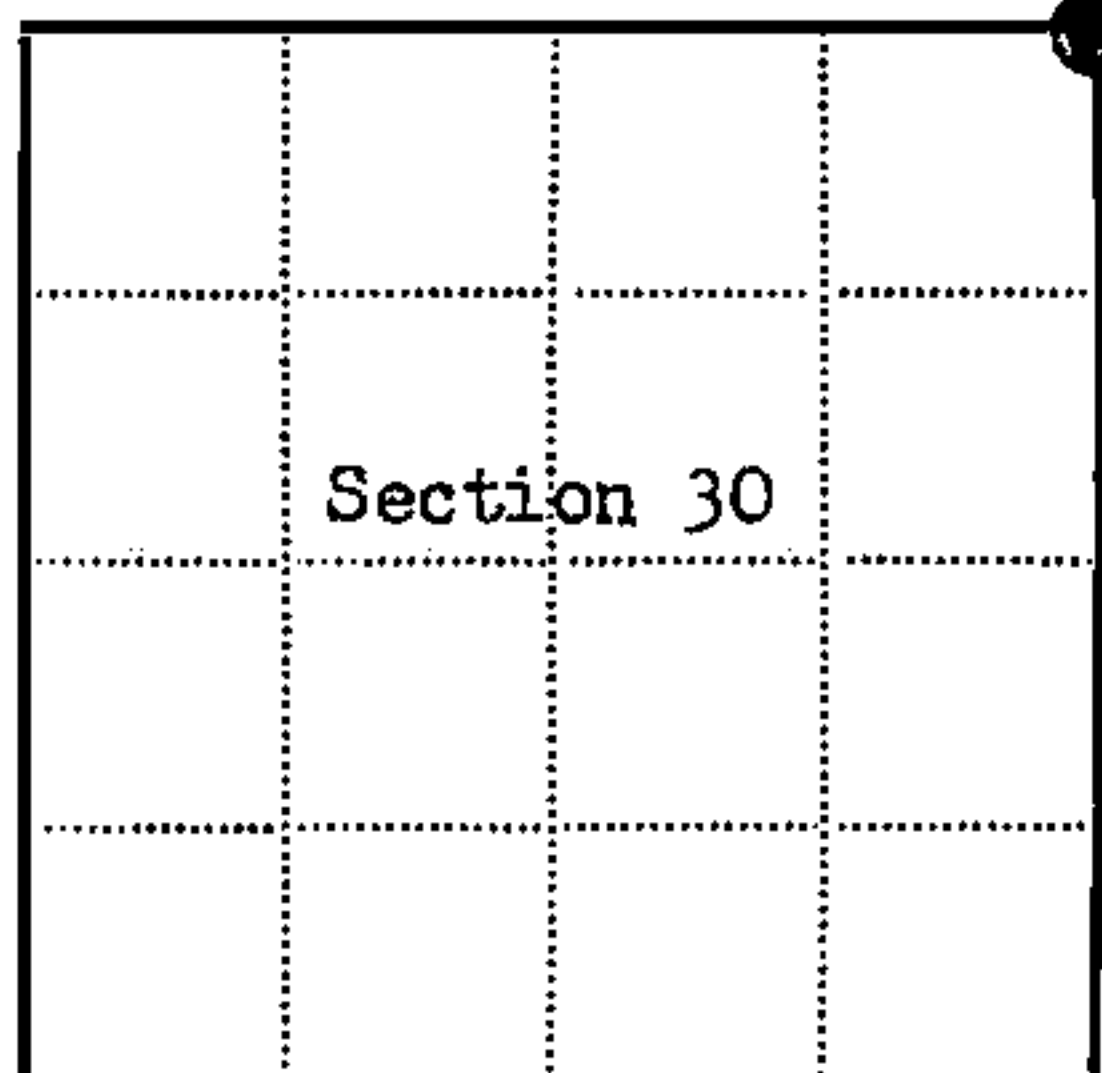
At the point S46°E, 19.14 feet from sugar bearing tree
 set 2 inch inside diameter, galvanized wrought iron pipe, 5 feet long, filled with concrete, flanged at bottom with brass cap marked:



from which the following new blazed and scribed bearing trees bear:

Sugar 12 inches, N36°E, 32.39 ft. or 49.076 lks.
 Sugar 6 inches, S12°E, 11.55 ft. or 17.500 lks.
 Sugar 7 inches, S71°W, 23.04 ft. or 34.909 lks.
 Sugar 10 inches, N20°W, 31.00 ft. or 46.970 lks.

43914190000



⊙ = Corner monument restored

□ =

Resident witnesses.....

Dated at Rhinelander, Wisconsin, this 27th day of July, 1967.

Signature Jean F. Resvick Title Cadastral Surveyor
 (County Surveyor, Registered Land Surveyor, or other duly authorized official)

Surveyors Registration No. S-802 DOC. NO. 94234

Office of Register of Deeds County of Forest,
 I hereby certify that the within instrument was filed in this office for record on the 27th day of February, 1968, and was filed in Book No. I Page No. of County Records.

Signature Eugene Stetson Title Register of Deeds

Township 39 North, Range 14 East, Section 30, Index No. R-5, Page No.

U.S. PUBLIC LAND SURVEY MONUMENT RECORD

Index No. R-5

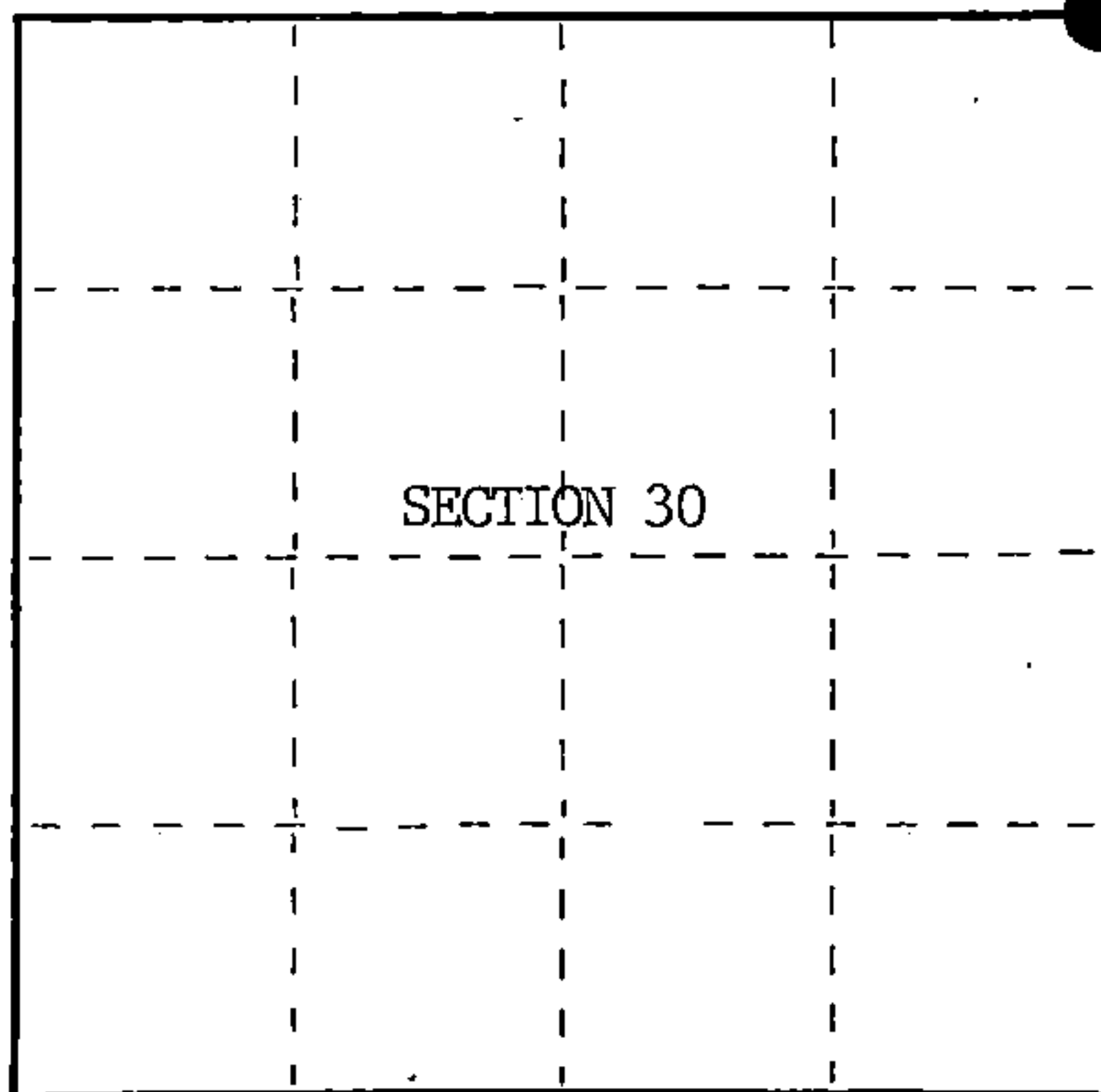
State of Wisconsin }
County of Forest } ss.

I, William B. Cochrane, do hereby certify that on the 12th day of August, 1985, I found evidence of the Northeast Section corner of Section 30 Township 39 North, Range 14 East, Fourth Principal Meridian, as described hereon; and that from this evidence I established a new monument and accessories as described hereon to perpetuate the original location of this corner.

Resident witnesses:

David Brownell

State Plane Co-ordinates
N- 247,203.1212
E-2,311,592.9770



○ = Corner monument restored.

History of original corner establishment:

Original Government Survey in 1857 by Alfred Millard.

Corner restoration on April 25, 1967, by Jean Resvick, a Registered Land Surveyor with the U.S. Forest Service.

See Certified Land Corner Restoration Certificate #94234, filed in the Registrar of Deeds Office, in the Forest County Courthouse.

Description of corner evidence found:

Sugar	16"	N36°E	32.39 feet
Sugar	8"	S12°E	11.55 feet
Sugar	8"	S71°W	23.04 feet
Sugar (snag)		N20°W	31.00 feet
Steel Sign Post		South	2.00 feet

Description of monument and accessories I established to perpetuate the original location of this corner.

Blazed and scribed a new bearing tree;

Maple	13"	N 2°W	23.57 feet
-------	-----	-------	------------

Dated at Hiles, Wis., this 15th day of January, 1986

Signature William B. Cochrane Title Land Surveyor Registration No. S-1107
(County Surveyor, Registered Land Surveyor, or other duly authorized official)

Office of Register of Deeds, County of Forest
I hereby certify that the within instrument was filed in this office for record on the 11th day of March, 1987 at 3:30 P. M.

Paul Achenbrenner
(Register of Deeds)

By _____ Deputy

FORM NO. 985-A

H.C. Miller Company
MILWAUKEE, WISCONSIN

Stock No. 26273

DOCUMENT NUMBER 132376

43914190000

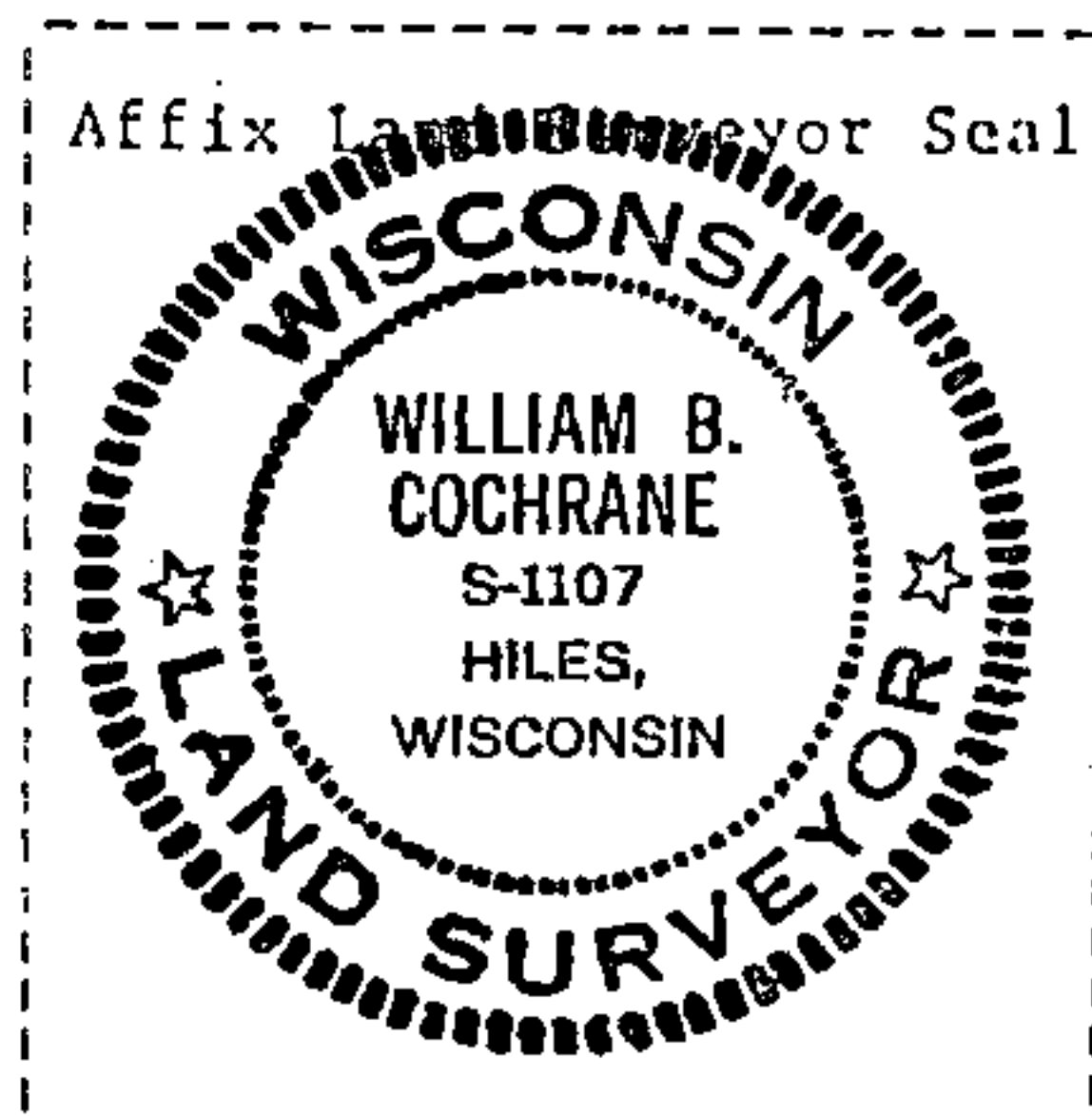
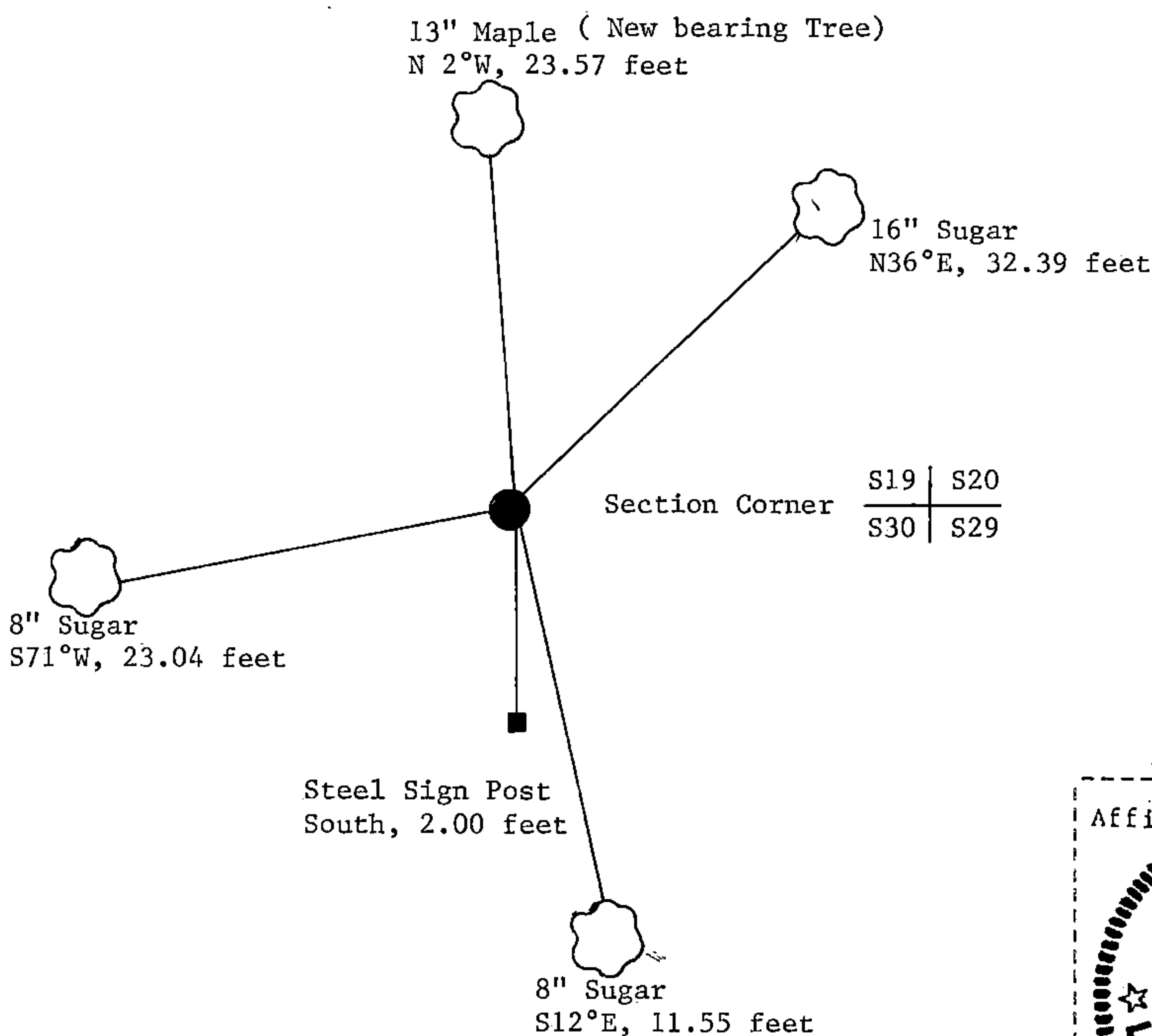
- (e) Describe any material discrepancy between the location of the corner as restored or reestablished and the location of that corner as previously restored or reestablished by distance and direction. Show the discrepancy on the plan view drawing under (d), above. Show the distances between the corner as previously restored or reestablished and (1) the corner as restored or reestablished, and (2) to at least 2 of the witness monuments shown on the drawing in (d), above.

See drawing below.

- (f) Was the corner restored through acceptance of (1) an obliterated evidence location, or, (2) a found perpetuated location?

Restored through acceptance of a found perpetuated location.

- (g&h) Was the corner reestablished through lost corner proportionate methods? If so, show the method, including the directions and distances to other public land survey corners used as evidence or used for proportioning in determining the corner location?



- (i) I, William B. Cochrane
(type or print name) certify that the corner location shown
on this record was determined by me or under my direction and
control and that this U.S. Public Land Survey Monument Record is
correct and complete to the best of my knowledge and belief.

William B. Cochrane October 7, 1986
Signature Date

Survey requested by; Edward C. Geyer 3-9-87

District Ranger Date