

U.S. PUBLIC LAND SURVEY MONUMENT RECORD

Index No. O,P-25

State of Wisconsin }  
County of Forest } ss.

History of original corner establishment:

Original Government Survey in 1858 by Artemas Curtis.

Corner restoration on May 9, 1975, by Jean Resvick, a Registered Land Surveyor with the U.S. Forest Service.

I, William B. Cochrane, do hereby certify that on the 17th day of September, 1985, I found evidence of the Meander corner of ~~x~~ on East side of Sec. 24, North Shore Township 39, North, Range 14 East, Fourth Principal Meridian, as described hereon; and that from this evidence I established a new monument and accessories as described hereon to perpetuate the original location of this corner.

See Certified Land Corner Restoration Certificate #111739, filed in the Registrar of Deeds Office, in the Forest County Courthouse.

Description of corner evidence found:

Monument as described and in place, from which the following bear;

White Pine	30"	S83°E	19.06 feet
White Pine(stump)		N29°W	3.10 feet
Steel Sign Post		NE	0.50 feet

Resident witnesses:

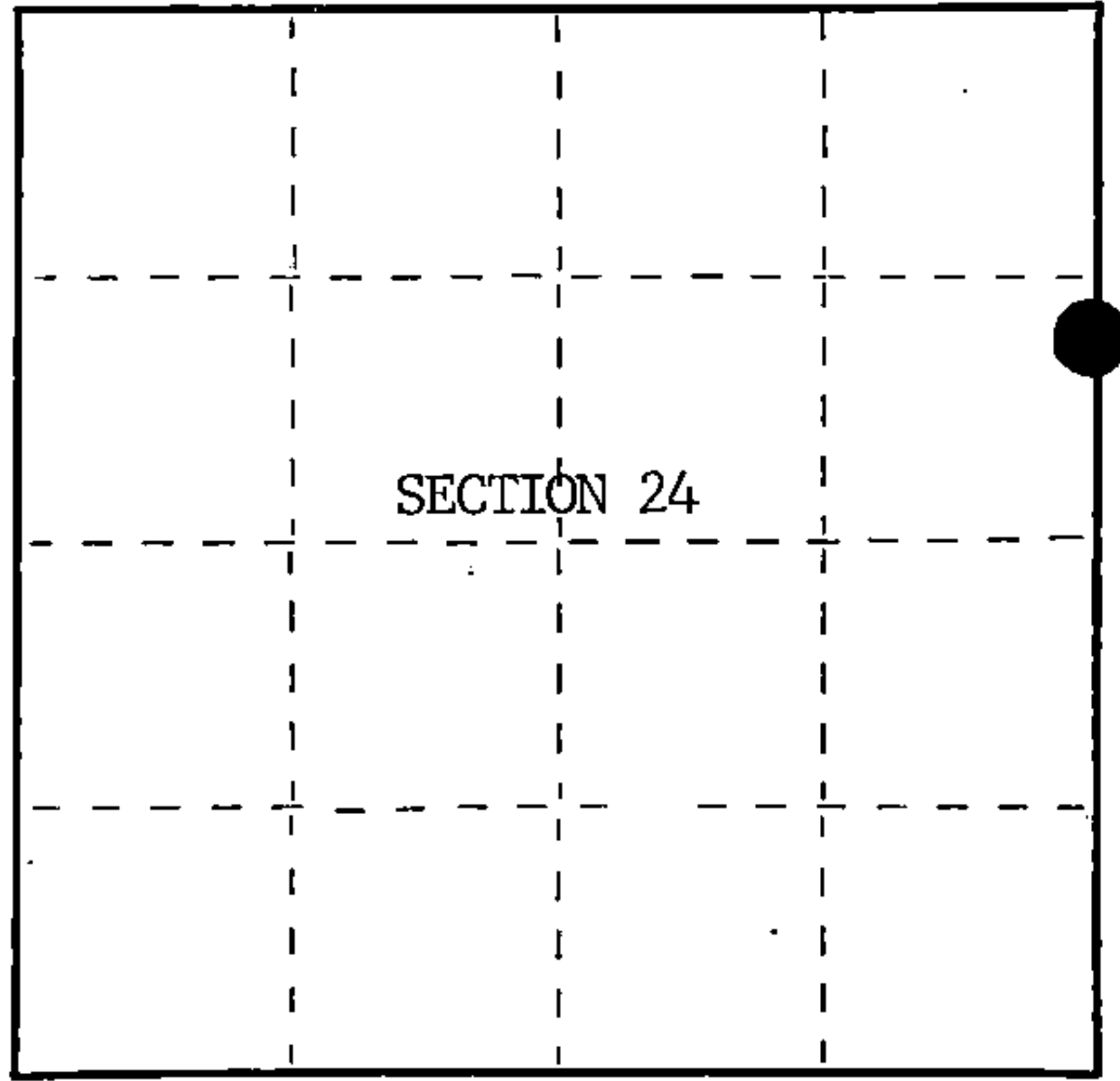
David Brownell  
\_\_\_\_\_  
\_\_\_\_\_  
\_\_\_\_\_

Description of monument and accessories I established to perpetuate the original location of this corner.

Blazed and scribed a new bearing tree;

White Birch	9"	N48°W	15.86 feet
Re-set Steel Sign Post		SE	4.00 feet

State Plane Co-ordinates  
N- 251,655.4229  
E-2,337,494.2700



○ = Corner monument restored.

Dated at Hiles, Wis., this 15th day of January, 1986

Signature William B. Cochrane Title Land Surveyor Registration No. S-1107  
(County Surveyor, Registered Land Surveyor, or other duly authorized official)

Office of Register of Deeds, County of Forest, I hereby certify that the within instrument was filed in this office for record on the 11th day of March, 1987 at 3:30 o'clock P. M.

Faul Aschentranner  
(Register of Deeds)

By \_\_\_\_\_ Deputy

FORM NO. 985-A  
H.C. Miller Company  
MILWAUKEE, WISCONSIN

Stock No. 26273

DOCUMENT NUMBER 132369

43914 24 2900

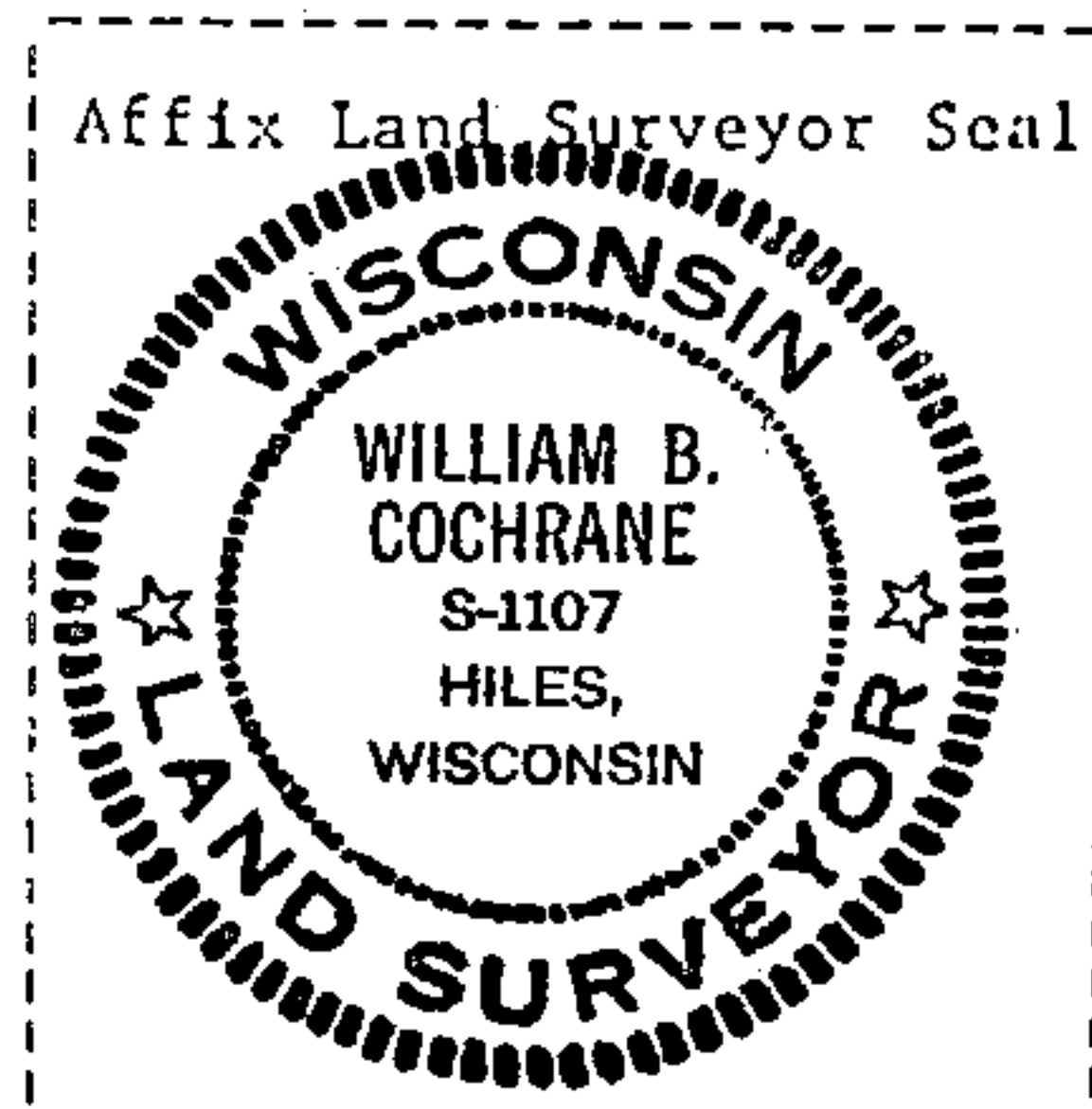
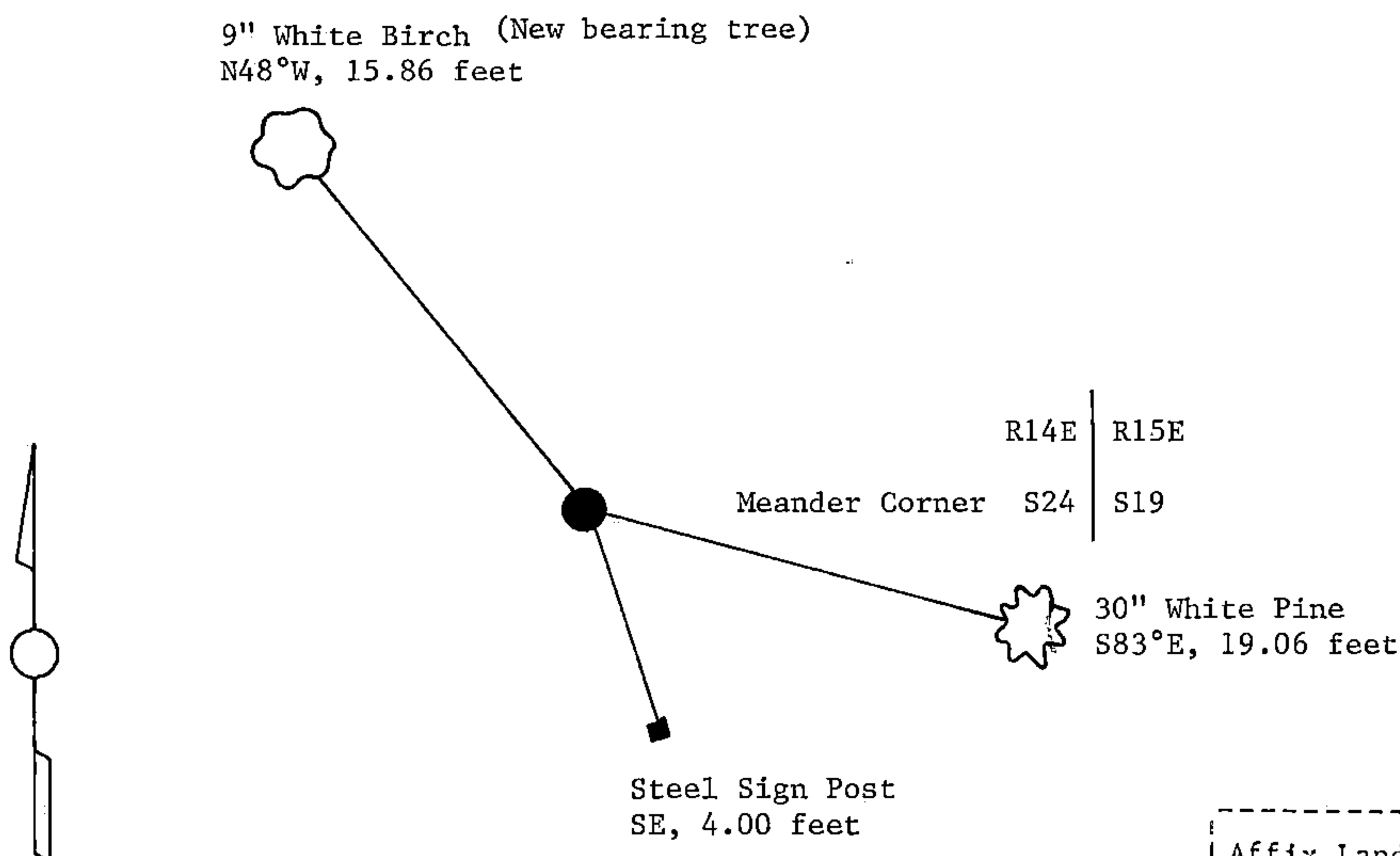
- (e) Describe any material discrepancy between the location of the corner as restored or reestablished and the location of that corner as previously restored or reestablished by distance and direction. Show the discrepancy on the plan view drawing under (d), above. Show the distances between the corner as previously restored or reestablished and (1) the corner as restored or reestablished, and (2) to at least 2 of the witness monuments shown on the drawing in (d), above.

See drawing below.

- (f) Was the corner restored through acceptance of (1) an obliterated evidence location, or, (2) a found perpetuated location?

Restored through acceptance of a found perpetuated location.

- (g&h) Was the corner reestablished through lost corner proportionate methods? If so, show the method, including the directions and distances to other public land survey corners used as evidence or used for proportioning in determining the corner location?



- (i) I, William B. Cochran  
(type or print name) certify that the corner location shown  
on this record was determined by me or under my direction and  
control and that this U.S. Public Land Survey Monument Record is  
correct and complete to the best of my knowledge and belief.

William B. Cochrane      October 7, 1986  
Signature      Date

Survey requested by: Edward Lachey 3-9-87  
District Ranger Date

District Ranger

Date \_\_\_\_\_

# CERTIFIED LAND CORNER RESTORATION

State of Wisconsin

County of Forest

ss.

I Jean F. Resvick, do hereby certify that on the 9 day of May, 19 75, I found evidence of the Meander corner of on East side section 24 North Shore Township 39 North, Range 14 East, Fourth Principal Meridian, as described hereon; and that from this evidence I established a new monument and accessories as described hereon to perpetuate the original location of this corner:

Description of original monument and accessories and subsequent restorations:

Surveyed in 1858 by Artemas Curtis  
56.52 ch. North between Sections 19 & 24  
over lake and set post  
Spruce 12, S84W, 41 lks.  
Yellow pine 14, S80E, 38 lks.  
6.48 ch. North leave swamp bears SW & SE  
23.20 ch. South over lake  
23.38 ch. North to section corner

Description of corner evidence found:

Iron pipe on shore of lake  
North 6.5 ch. leave swamp  
South 23.32 ch. across lake  
South to meander corner on South shore, S0°06'27"E, 1539.04 feet  
North to Section corner equals N0°06'27"W, 1549.68 feet

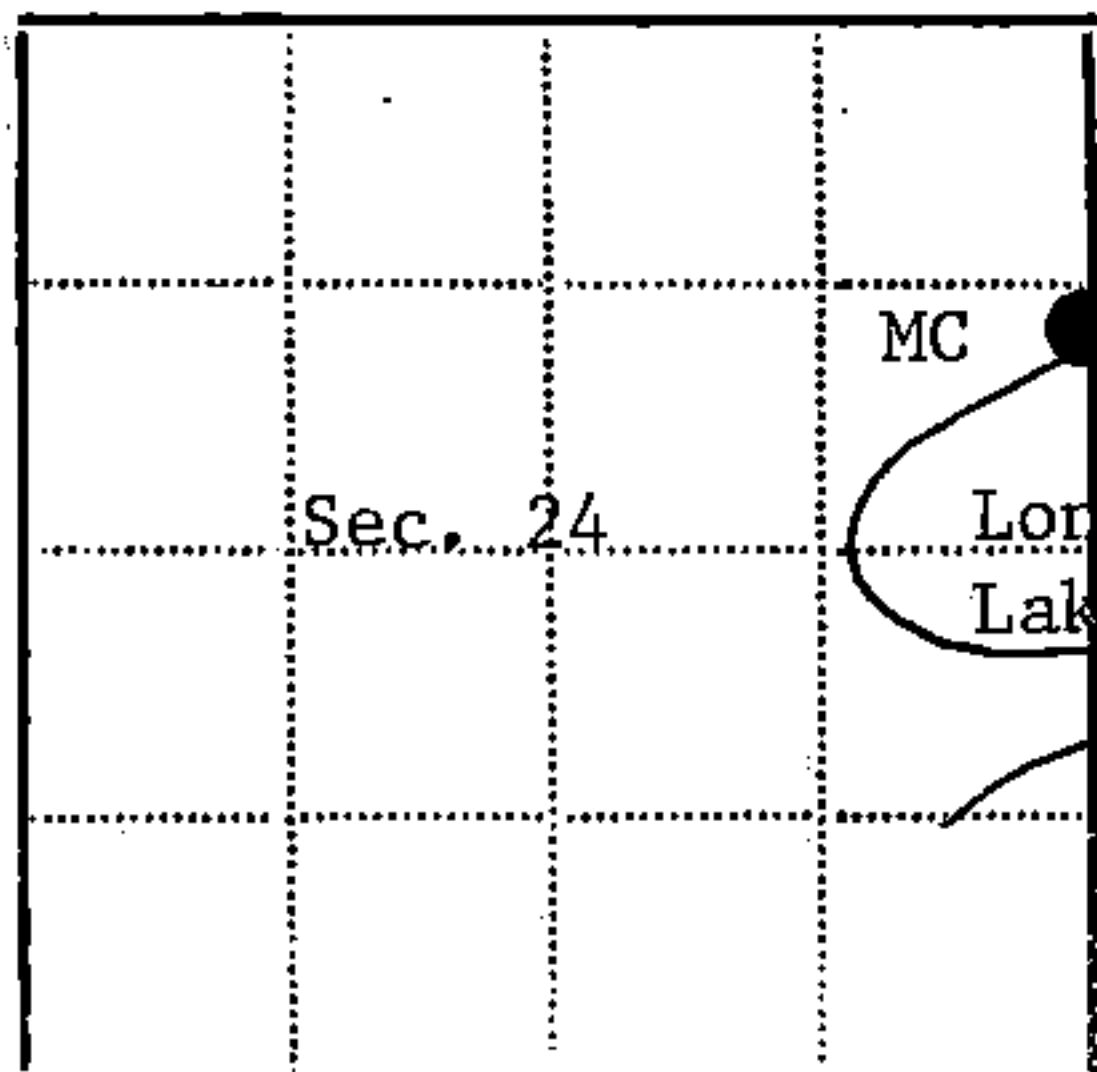
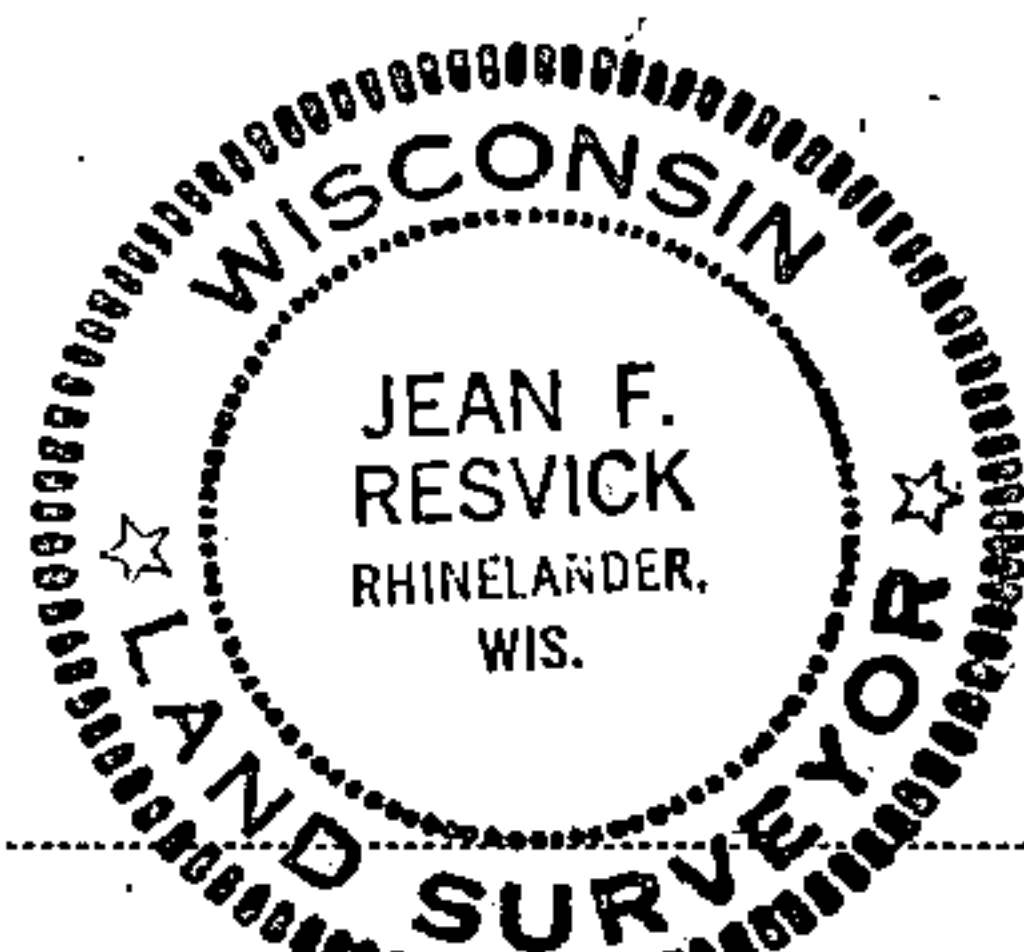
Description of monument and accessories I established to perpetuate the location of this corner:

Replaced iron pipe with a 2 inch inside diameter, galvanized iron pipe, 3 feet long, filled with concrete, with brass cap stamped: Meander Corner, T39N, R14E, R15E, S24, S19, 1976, S-802

From which the following bears:

White pine 30, S83E, 19.06 ft. (not blazed or scribed)  
White pine 7, N29W, 3.10 ft. (blazed and scribed)  
Set steel sign post 0.30 ft. south of monument

4391424 2900



● - Corner monument restored  
□ -

Resident witnesses

Dated at Rhinelander Wisconsin, this 19 day of May 19 77.

Signature Jean F. Resvick Title Land Surveyor  
(County Surveyor, Registered Land Surveyor, or other duly authorized official)

Surveyors Registration No. S-802

DOCUMENT NUMBER 111739

Office of Register of Deeds County of Forest

I hereby certify that the within instrument was filed in this office for record on the 27th day of June 19 77, and was filed in Book No. Page No. of County Records.

Signature Eugene Stetson Title Register of Deeds

Township 39 North, Range 14 East, Section 24, Index No. 0, P-25, Page No.

025