

ESTABLISHED
CERTIFIED LAND CORNER ~~RESTORATION~~

State of Wisconsin

County of Forest

ss.

I Jean F. Resvick, do hereby certify that on the 5th day of November, 1975,
I ~~found evidence of the~~ established the South Sixteenth corner ~~of~~ between Sections 25 and 26
Township 39 North, Range 14 East, Fourth Principal Meridian, as described
hereon; and that ~~from this evidence~~ I established a new monument and accessories as described hereon to per-
petuate the ~~original~~ location of this corner:

Description of original monument and accessories and subsequent restorations:

Township surveyed in 1865 by William E. Daugherty
One sixteenth corners were not located by this original survey.

Description of corner evidence found:

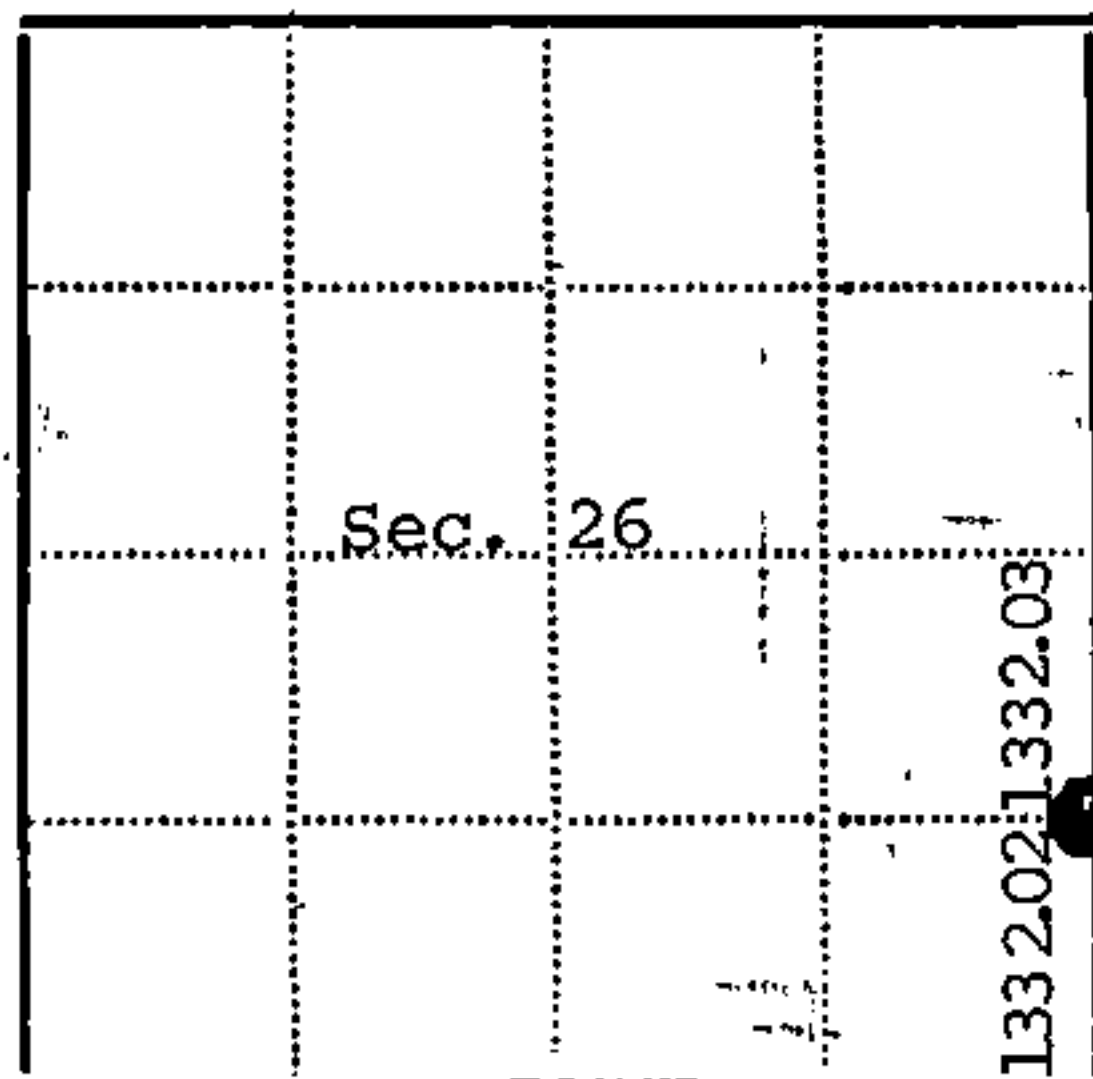
No evidence or record of this corner having been established was found.
Fence west appears to have been built for convenience rather than on line
and straight.

I established the location of this corner at the mid-point and on line
between the southeast section corner of Section 26 and the east quarter
corner of Section 26. This one sixteenth corner thus being located
N0°27'53"W, 1332.02 feet from the southeast corner of Section 26 and
S0°27'53"E, 1332.03 feet from the east quarter corner of Section 26.

Description of monument and accessories I established to perpetuate the location of this corner:

At the location established above, I set a 2 inch inside diameter galvanized
iron pipe, 3 feet long, filled with concrete, set 0.50 feet below the surface of
the road, with brass cap stamped: T39N, R14E, S 1/16, S26, S25, 1975, S-802
Reference to the following blazed and scribed new bearing trees.
Maple 6, S59W, 33.77 feet
Red pine 4, N45W, 38.18 feet
Fence west, south, 22.0 feet

43914261000



Resident witnesses

Dated at Rhineland Wisconsin, this 15 day of June
1976.

Signature Jean F. Resvick Title Land Surveyor
(County Surveyor, Registered Land Surveyor, or other duly authorized official)

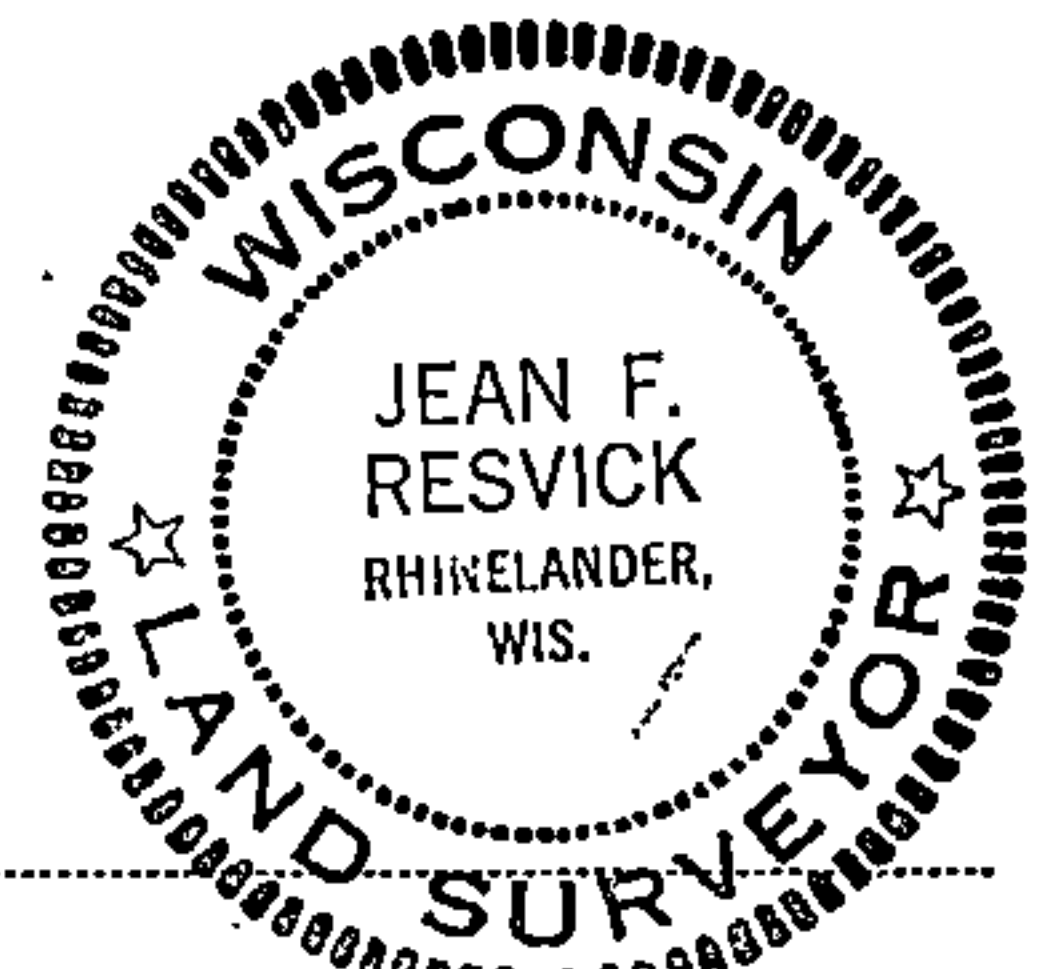
Surveyors Registration No. S-802

Office of Register of Deeds County of Forest

I hereby certify that the within instrument was filed in this office for record
on the 2nd day of July, 1976, and was filed in Book
No. U-21 Page No. U-21 of County Records.

Signature Eugene Stutzman Title Register of Deeds

Township 39 North, Range 14 East, Section 26, Index No. U-21, Page No. U-21



DOCUMENT NUMBER
109608

U21

U.S. PUBLIC LAND SURVEY MONUMENT RECORD

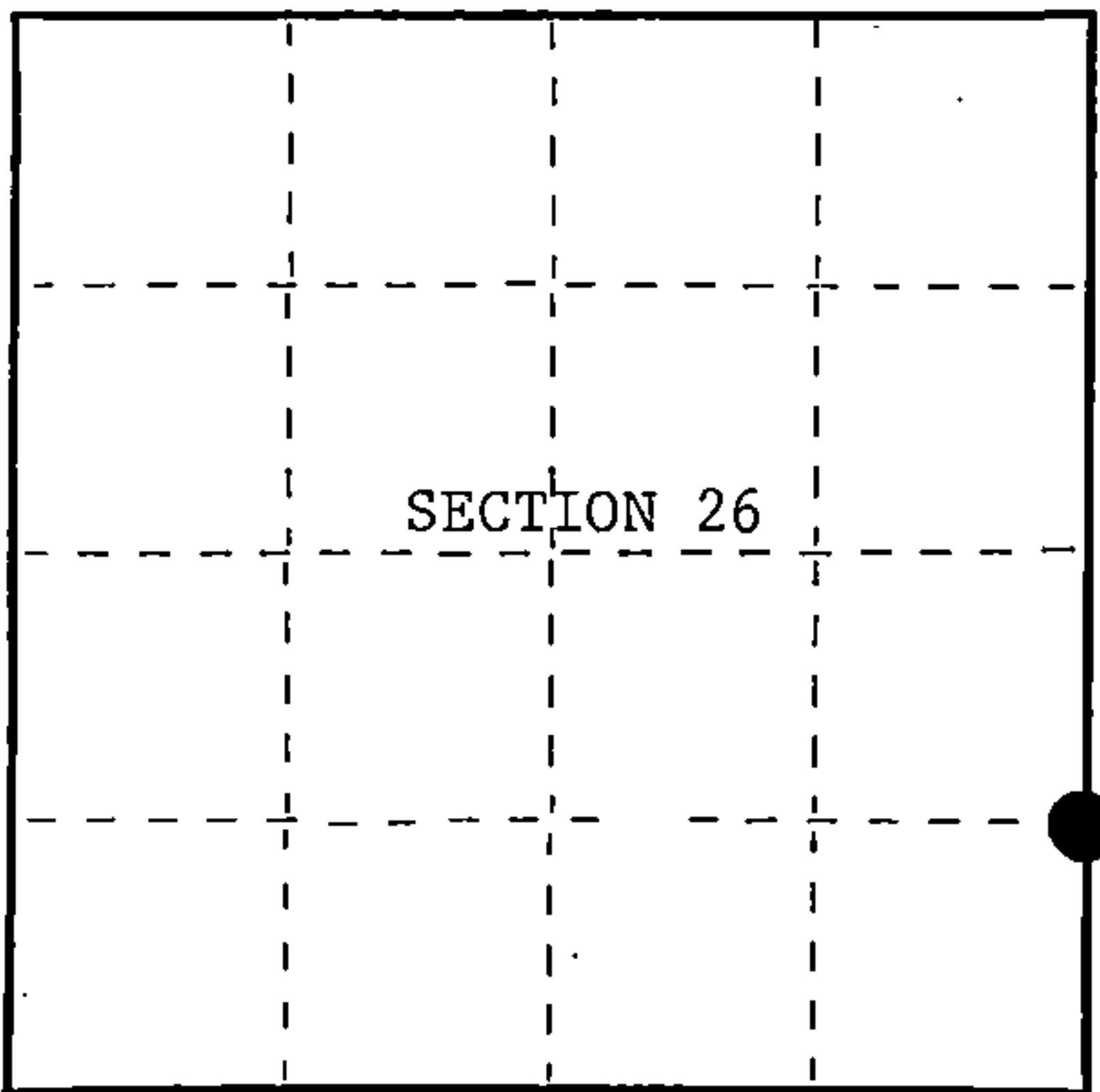
Index No. U-21

State of Wisconsin }
County of Forest } ss.

I, William B. Cochrane, do hereby
certify that on the 14th day
of August, 1985, I found
evidence of the South Sixteenth
corner of between Sections 25 and 26
Township 39, North, Range
14 East, Fourth Principal Meridian,
as described hereon; and that from this evidence
I established a new monument and accessories
as described hereon to perpetuate the original
location of this corner.

Resident witnesses:

State Plane Co-ordinates
N- 243,953.6940
E- 2,332,411.3110



○ = Corner monument restored.

History of original corner establishment:

None

Corner position was established on November 5th, 1975, by Jean Resvick, a Registered
Land Surveyor with the U.S. Forest Service. See Certified Land Corner Restoration
Certificate filed in the Registrar of Deeds Office in the Forest County Courthouse.

Description of corner evidence found:

Found monument as described and in place, from which the following bear;

R. Pine	8"	N45°W	38.18 feet
Fence (West)		South	22.00 feet

Note; The SW BT was destroyed by road building.

Description of monument and accessories I established to perpetuate the original location of this corner.

Blazed and scribed a new bearing tree;

Maple	8"	S40°W	64.60 feet
-------	----	-------	------------

Dated at Hiles, Wis., this 14th day of February, 1989

Signature William B. Cochrane Title Land Surveyor Registration No. S-1107
(County Surveyor, Registered Land Surveyor, or other duly authorized official)

Office of Register of Deeds, County of Forest, I hereby certify that the within
instrument was filed in this office for record on the 12th day of April, 1989
at 9:10 o'clock A. M.

Paul Aschenbrenner
(Register of Deeds)

By _____ Deputy

FORM NO. 985-A

H.C. Miller Company
Printer, Madison

Stock No. 26273

DOCUMENT NUMBER

137189

43914 261000

(e) Describe any material discrepancy between the location of the corner as restored or reestablished and the location of that corner as previously restored or reestablished by distance and direction. Show the discrepancy on the plan view drawing under (d), above. Show the distances between the corner as previously restored or reestablished and (1) the corner as restored or reestablished, and (2) to at least 2 of the witness monuments shown on the drawing in (d), above.

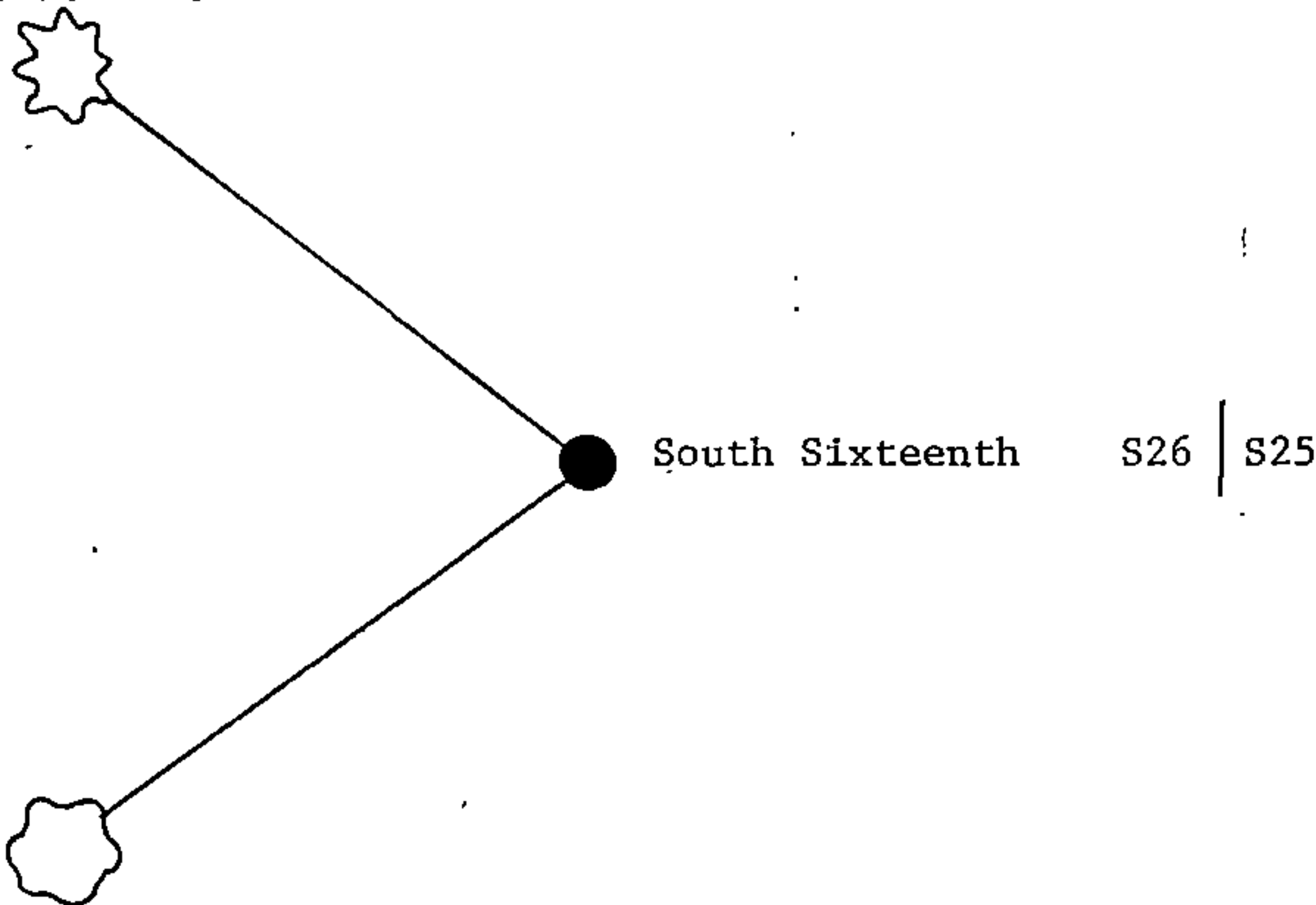
See drawing below.

(f) Was the corner restored through acceptance of (1) an obliterated evidence location, or, (2) a found perpetuated location?

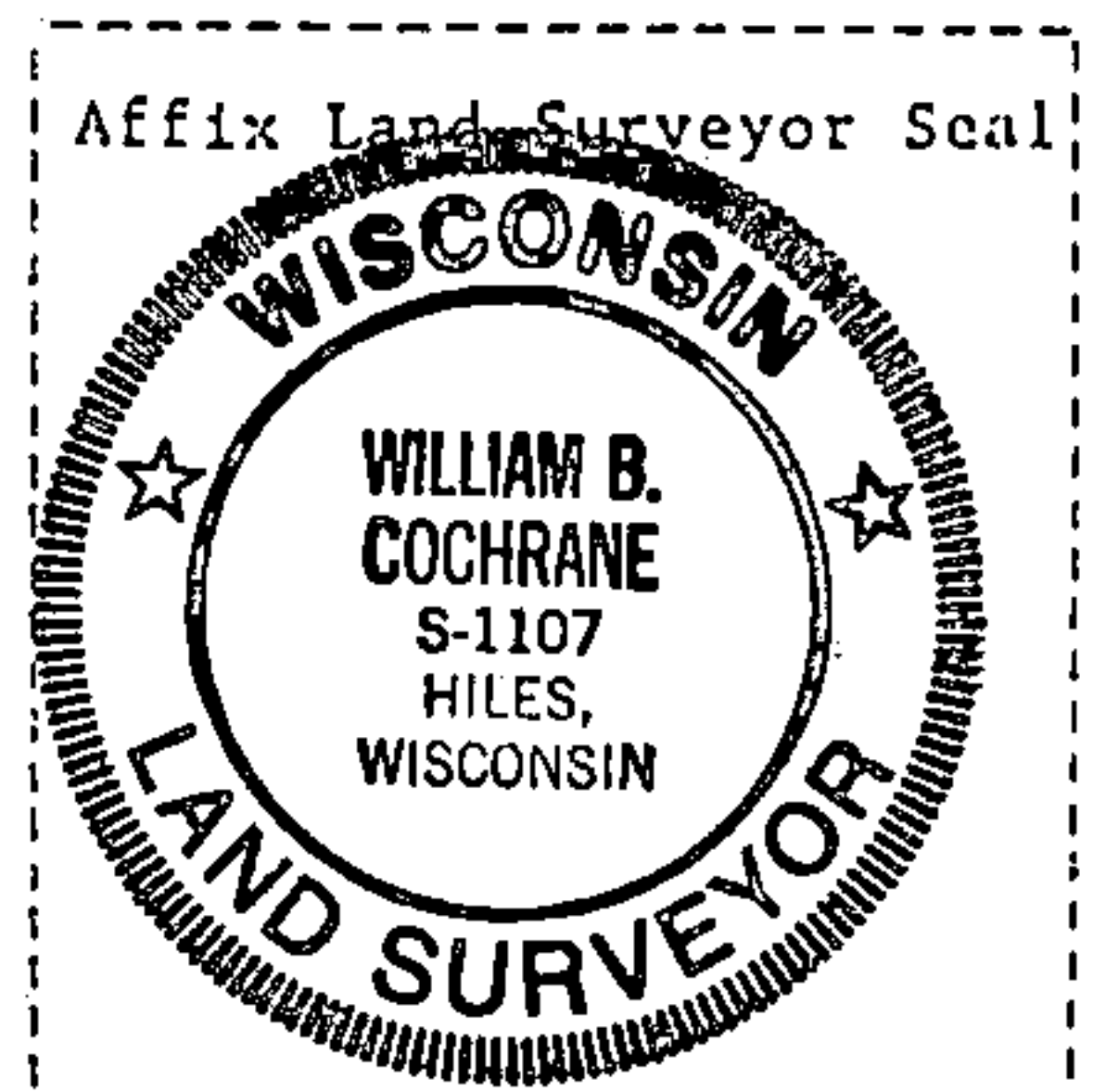
Restored through acceptance of a found perpetuated location.

(g&h) Was the corner reestablished through lost corner proportionate methods? If so, show the method, including the directions and distances to other public land survey corners used as evidence or used for proportioning in determining the corner location?

8" R. Pine
N45°W, 38.18 feet



8" Maple(New bearing tree)
S40°W, 64.60 feet



(i) I, William B. Cochrane
(type or print name) certify that the corner location shown on this record was determined by me or under my direction and control and that this U.S. Public Land Survey Monument Record is correct and complete to the best of my knowledge and belief.

William B. Cochrane February 14, 1989
Signature Date

Survey requested by: [Signature] 3-22-89
District Ranger Date