

U.S. PUBLIC LAND SURVEY MONUMENT RECORD

Index No. V-15

State of Wisconsin }
 County of Forest } ss.

I, William B. Cochrane, do hereby
 certify that on the 20th day
 of October, 1986, I found
 evidence of the North Quarter
 corner of Section 34
 Township 39, North, Range
14 East, Fourth Principal Meridian,
 as described hereon; and that from this evidence
 I established a new monument and accessories
 as described hereon to perpetuate the original
 location of this corner.

Resident witnesses:

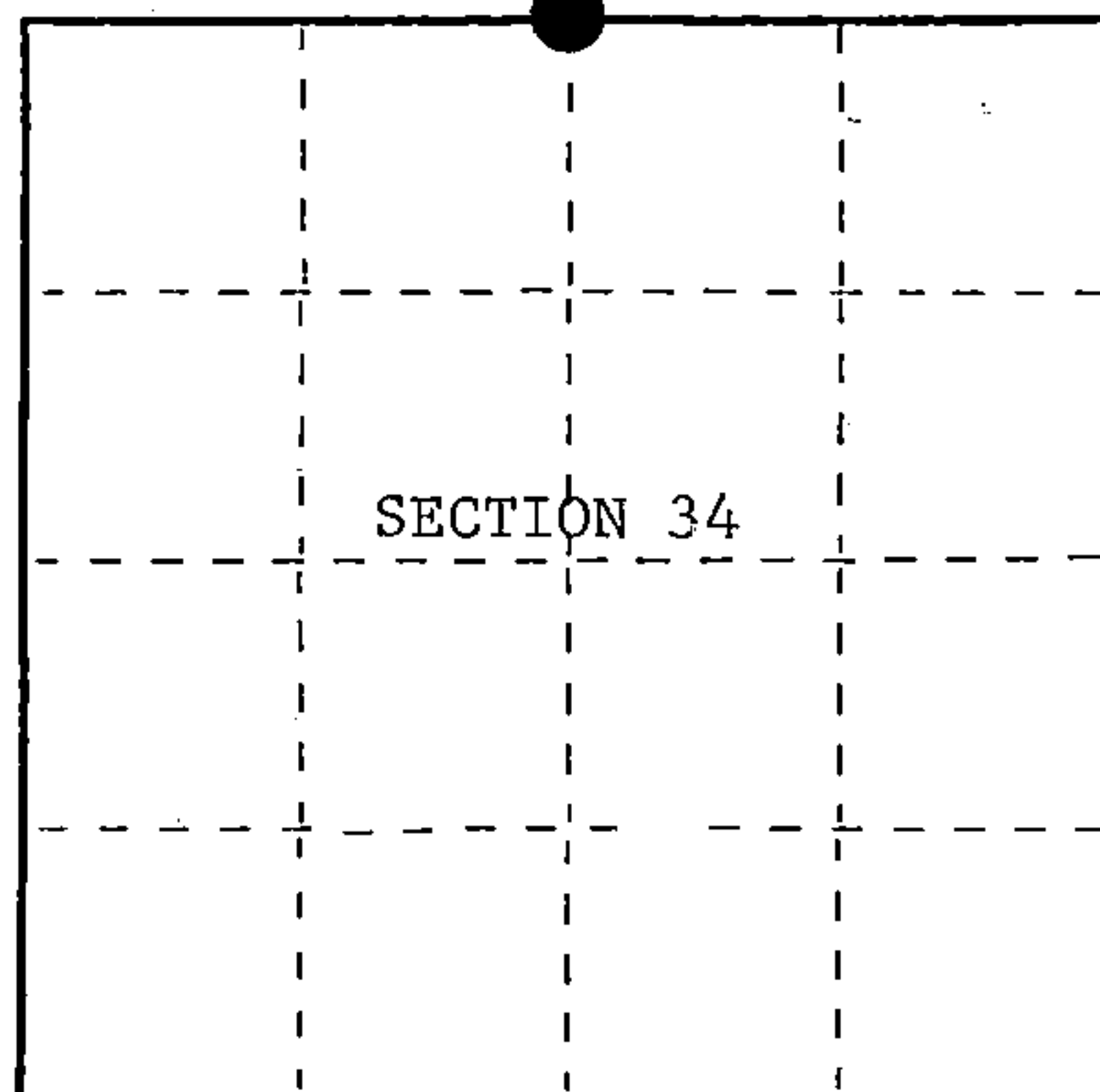
David Brownell

Tony Tillman

State Plane Co-ordinates

N- 242,430.4333

E-2,324,512.8950



○ = Corner monument restored.

History of original corner establishment:

Original Government Survey in 1865 by William E. Daugherty and Alex McDill.
 West corrected between Sections 27 and 34, at 40.20 chains, set Quarter Section
 Post to Sections 27 and 34, from which the following bear;

Cedar	10"	N15°E	7 lks.
Cedar	12"	S43°W	21 lks.

Description of corner evidence found:

No corner evidence was recovered.

The corner position was re-established at proportionate distance and on line
 between the Northeast and Northwest Section Corners of Section 34.

Description of monument and accessories I established to perpetuate the original location of this corner.

At the corner position, set a 2½ inch diameter aluminum pipe monument, 3 feet long,
 2½ feet in the ground, with an aluminum cap stamped; T39N, R14E, 1/4, S27, S34,
 1986, S-1107. From which the following new blazed and scribed bearing trees bear;

Maple	10"	N37°E	33.95 feet
Maple	12"	S63°E	19.17 feet
Steel Sign Post		NE	1.00 feet

Dated at Hiles, Wis., this 2nd day of February, 1987

Signature William B. Cochrane Title Land Surveyor Registration No. S-1107
 (County Surveyor, Registered Land Surveyor, or other duly authorized official)

Office of Register of Deeds, County of Forest, I hereby certify that the within
 instrument was filed in this office for record on the 11th day of March, 1987
 at 3:30 o'clock P. M.

Paul Hochstetler
 (Register of Deeds)

By _____ Deputy

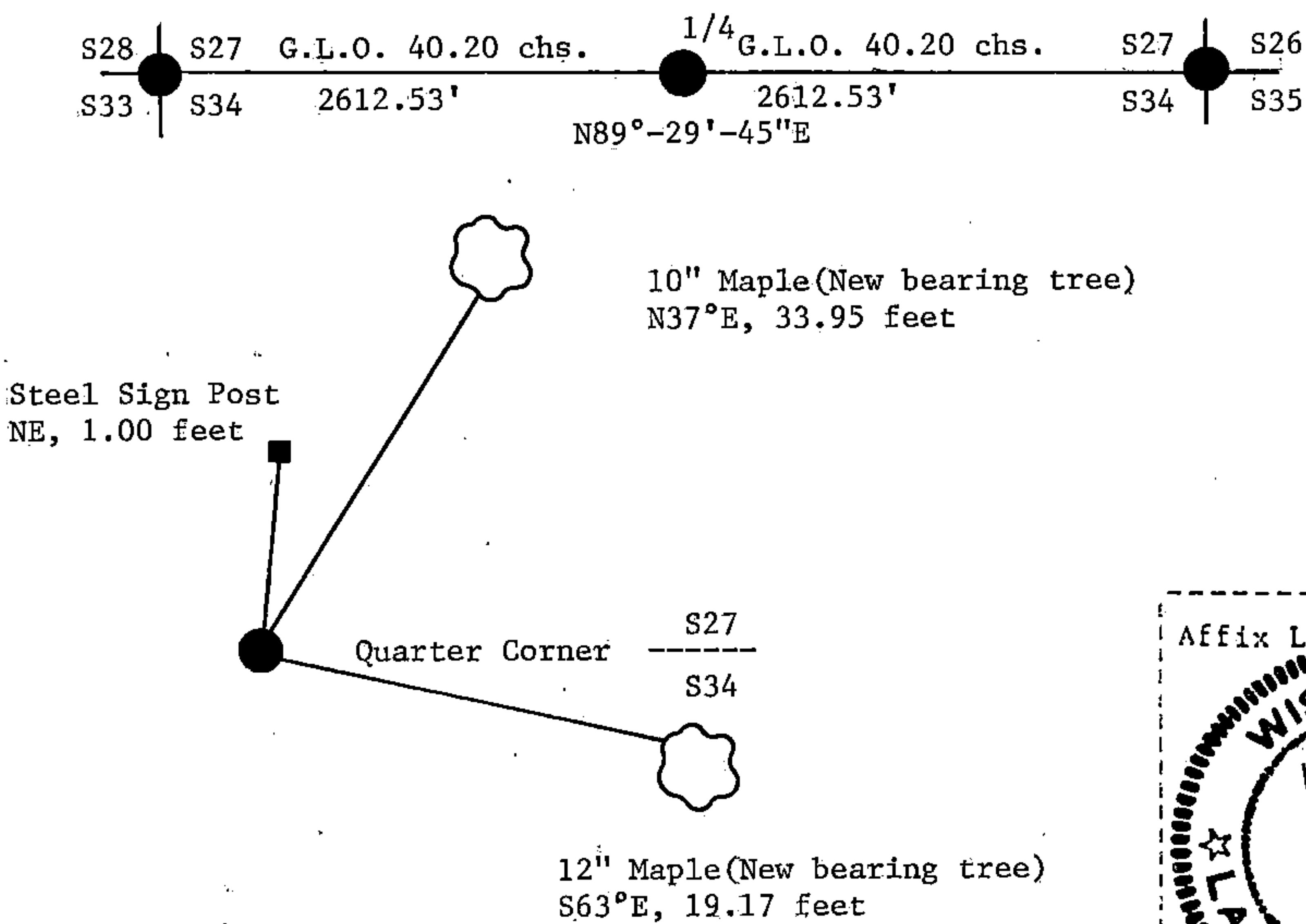
- (e) Describe any material discrepancy between the location of the corner as restored or reestablished and the location of that corner as previously restored or reestablished by distance and direction. Show the discrepancy on the plan view drawing under (d), above. Show the distances between the corner as previously restored or reestablished and (1) the corner as restored or reestablished, and (2) to at least 2 of the witness monuments shown on the drawing in (d), above.

See drawing below.

- (f) Was the corner restored through acceptance of (1) an obliterated evidence location, or, (2) a found perpetuated location?

- (g&h) Was the corner reestablished through lost corner proportionate methods? If so, show the method, including the directions and distances to other public land survey corners used as evidence or used for proportioning in determining the corner location?

This corner was re-established using State Plane Co-ordinates computed from Aerial Photography and a Global Positioning Satellite Survey. The computed corner position was located in the field using a North Seeking Gyro, an Electronic Distance Meter, and/or a steel tape.



- (i) I, William B. Cochrane
(type or print name) certify that the corner location shown on this record was determined by me or under my direction and control and that this U.S. Public Land Survey Monument Record is correct and complete to the best of my knowledge and belief.

William B. Cochrane February 2, 1987
Signature Date

Survey requested by: Edward [Signature] 3-9-87
District Ranger Date

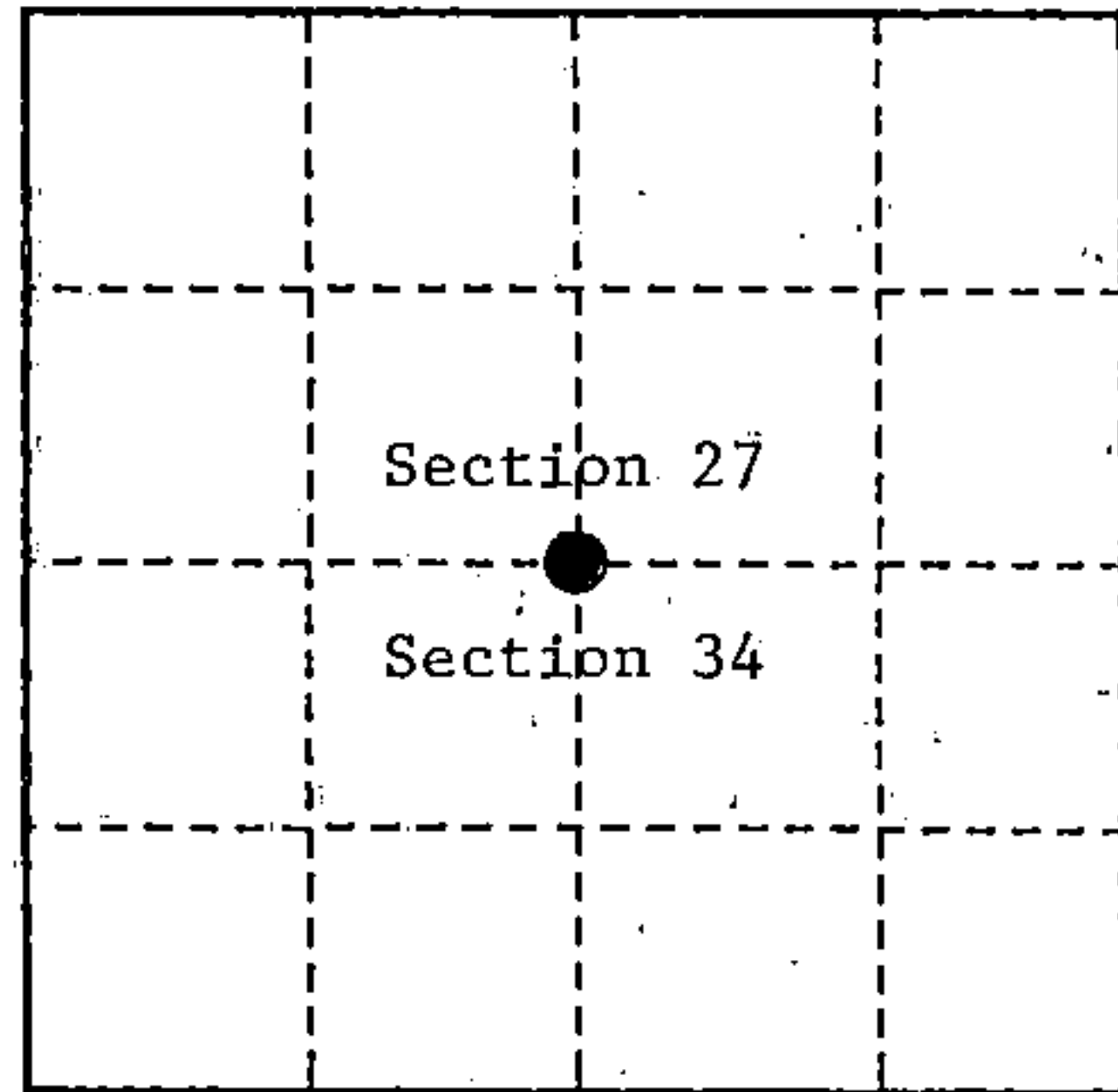
U. S. PUBLIC LAND SURVEY MONUMENT RECORD

INSTRUCTIONS:

This record shall show the location of the corner and shall include all of the following nine elements (a through i).

- (a) Identify the corner by reference to the U.S. public land survey system.
 O = Corner monument restored.

Quarter Corner common to Sections 27 and 34
 T39N, R14E, Forest County, Wisconsin



- (b) Describe any record evidence, monument evidence, occupational evidence, testimonial evidence or any other material evidence you considered, and whether the monument was found or placed.

Original Government Survey in 1865 by William E. Daugherty and Alex McDill.

In 1986, William B. Cochrane, a Land Surveyor with the U.S. Forest Service, restored the corner position at proportionate distance and on line between the NE and NW Section corners of Section 34. He set a 2½" diameter aluminum pipe monument, 3 feet long, with an aluminum cap stamped as follows: T39N, R14E, 1/4, S27, S34, 1986, S-1107 from which the following bear:

Maple	10"	N 37°E	33.95 feet
Maple	12"	S 63°E	19.17 feet
Steel sign post		Northeast	1.0 feet

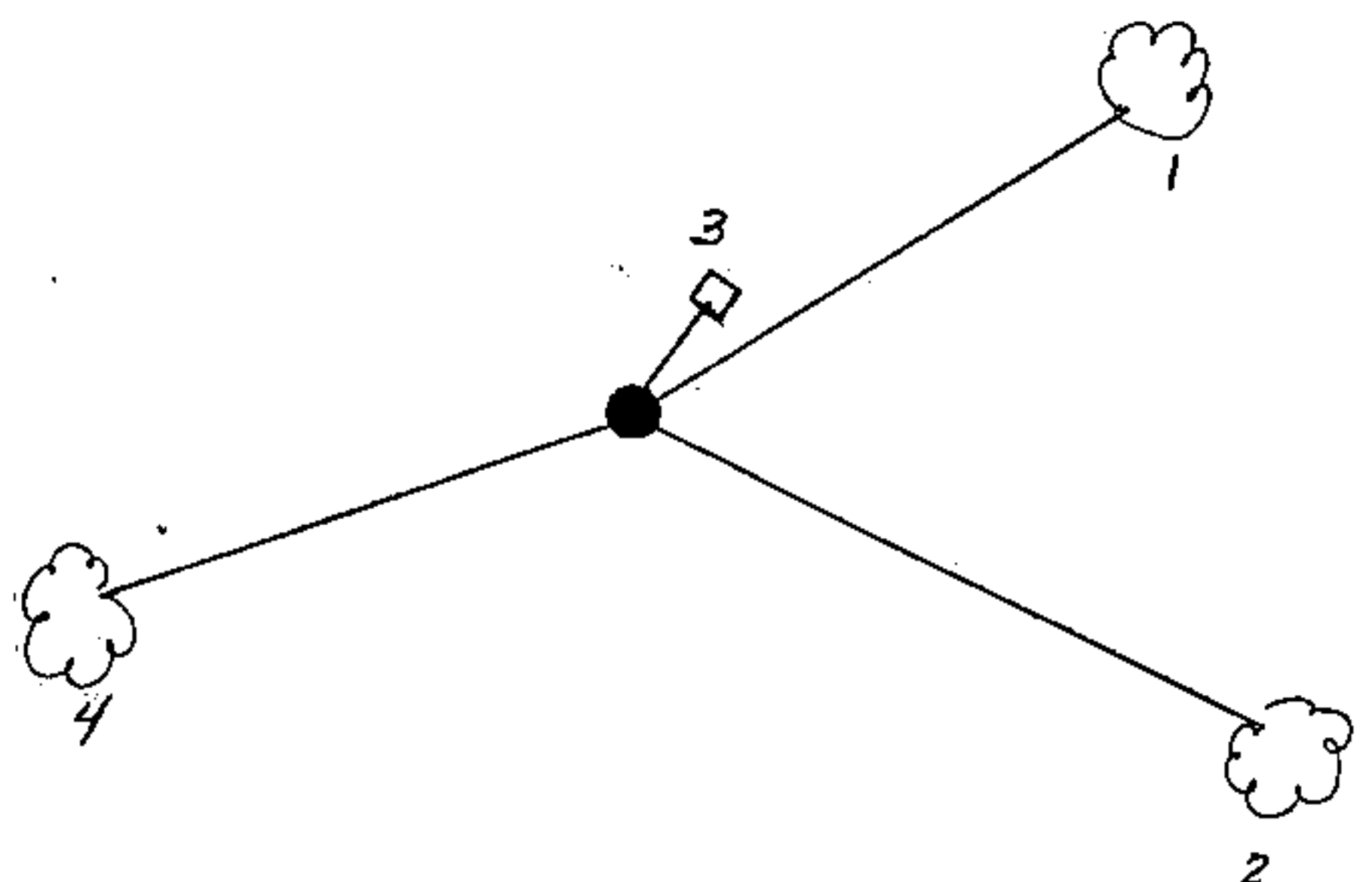
On 9/27/99, Gary L. Pisoni RLS found above monument and assessories as described below.

See previous Land Corner Certificate dated March 11, 1987, Document Number 132392.

- (c) In the plan view drawing below, provide reference ties to at least 4 witness monuments, or, if the location is within a municipality, to at least 2 witness monuments. (Witness monuments shall be made of concrete, natural stone, iron or other equally durable material.)

- (d) Show a plan view drawing depicting the relevant monuments and reference ties which is sufficient in detail to enable accurate relocation of the corner monument if the corner monument is disturbed. Indicate north.

1. Maple, 14", N 45°E, 33.95 feet
2. Maple, 14", S 63°E, 19.17 feet
3. Steel sign post, NE, 1.0 feet
4. Maple, 7", S68°W, 16.56 feet (NBT)



REGISTER'S OFFICE
 Forest County, Wis.
 Received for record this 27th day
 of October A.D., 1999 at
10:05 o'clock A.M. and recorded
 in Vol. Corner Restoration
 page Y-15

Kay Swanson, Deputy
 Register of Deeds

43914270020

(e) Describe any material discrepancy between the location of the corner as restored or reestablished and the location of that corner as previously restored or reestablished by distance and direction. Show the discrepancy on the plan view drawing under (d). above. Show the distances between the corner as previously restored or reestablished and (1) the corner as restored or reestablished, and (2) to at least 2 of the witness monuments shown on the drawing in (d), above.

None

(f) Was the corner restored through acceptance of (1) an obliterated evidence location, or, (2) a found perpetuated location ?

(g & h) Was the corner reestablished through lost corner proportionate methods? If so, show the method, including the directions and distances to other public land survey corners used as evidence or used for proportioning in determining the corner location?

(1) I, GARY L. PISONI

(type or print name) certify that the corner location shown on this record was determined by me or under my direction and control and that this U.S. Public Land Survey Monument Record is correct and complete to the best of my knowledge and belief.

Signature

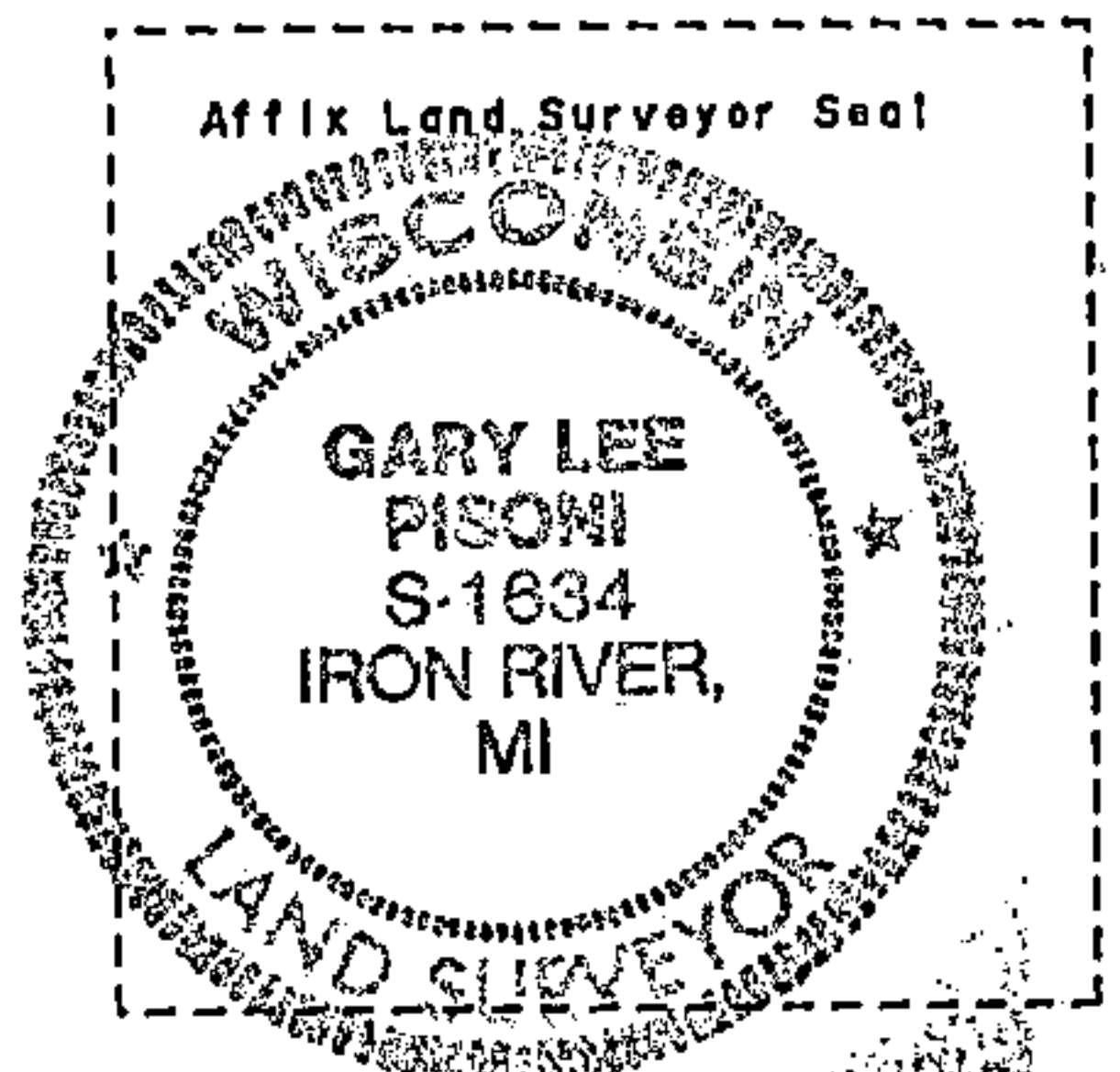
CERTIFICATE READY FOR FILING:

Gary L. Pisoni

10-1-99

Date

C. B. [Signature]
District Ranger



Stock No. 26273



FORM NO. 985-A