

# U.S. PUBLIC LAND SURVEY MONUMENT RECORD

Index No. T-5

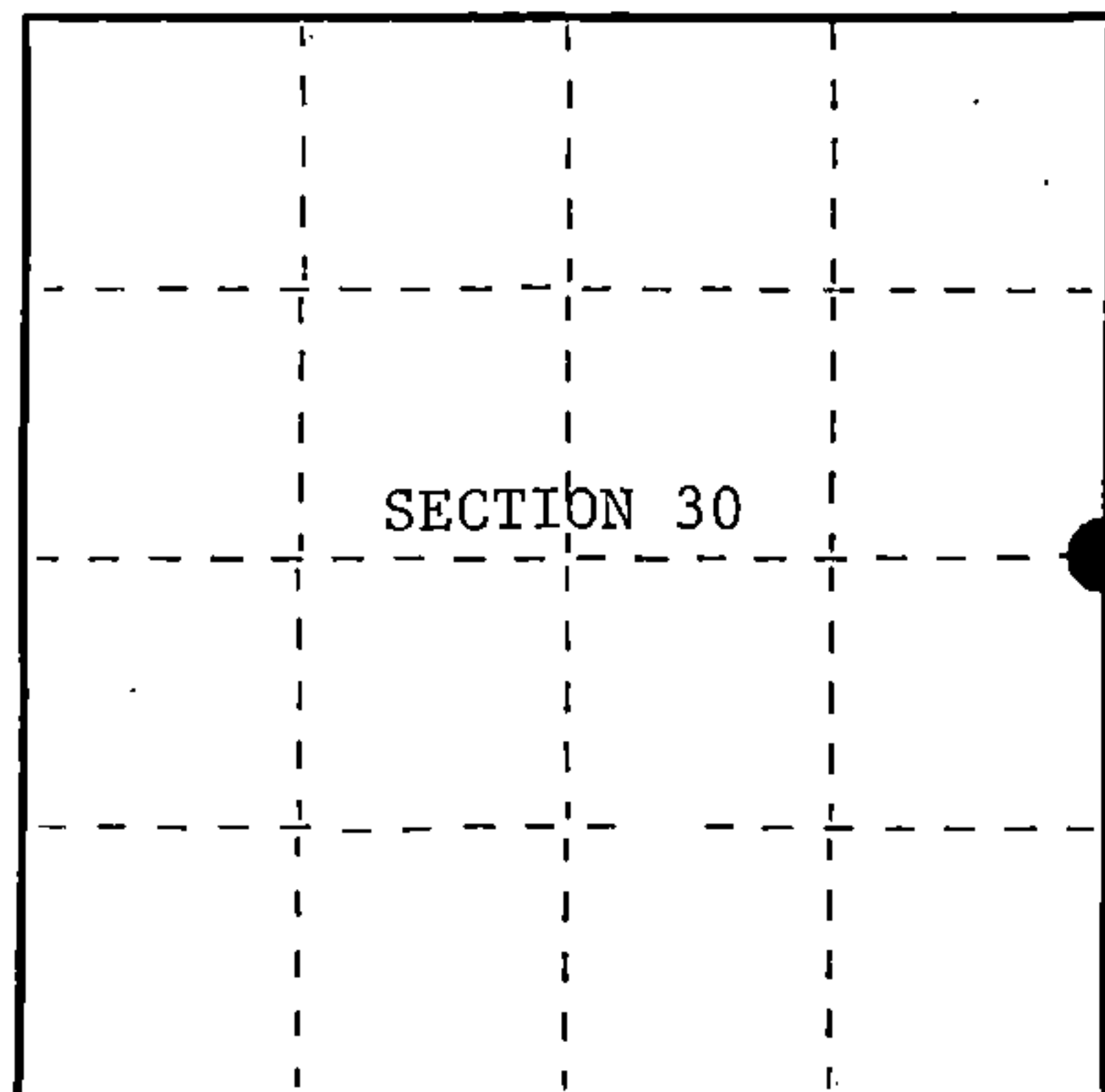
State of Wisconsin }  
County of Forest } ss.

I, William B. Cochrane, do hereby certify that on the 9th day of June, 1986, I found evidence of the East Quarter corner of Section 30 Township 39 North, Range 14 East, Fourth Principal Meridian, as described hereon; and that from this evidence I established a new monument and accessories as described hereon to perpetuate the original location of this corner.

Resident witnesses:

David Brownell

State Plane Co-ordinates  
N- 244,566.1440  
E-2,311,784.6890



○ = Corner monument restored.

History of original corner establishment:

Original Government Survey in 1865 by William E. Daugherty and Alex McDill. North between Sections 29 and 30, at 40.00 chs. set Quarter Section Post to Sections 29 and 30, from which the following bear;

Birch	14"	N59°W	88 lks.
Hemlock	10"	S78°E	31 lks.

Description of corner evidence found:

Found a 1½" x 42" iron pipe in a mound of rock, from which the following blazed and scribed bearing trees bear;

Elm (Dead)	15"	N 1°E	34.32 feet
Elm (Dead)	5"	S31°W	6.60 feet

The above bearing trees were made by unknown..They were also cut down for an aerial photo project.

I accept the iron pipe as the best available evidence for restoring the corner position.

Description of monument and accessories I established to perpetuate the original location of this corner.

In place of iron pipe, set a 2½" diameter aluminum pipe monument, 3 feet long, 2½ feet in the ground, with an aluminum cap stamped; T39N, R14E, 1/4, S29, S30, 1986, S-1107. From which the following new blazed and scribed bearing trees bear;

Maple	7"	S58°W	53.36 feet
Basswood	7"	N15°W	64.95 feet
Steel Sign Post		NW	1.00 feet

Monument is surrounded by stone.

Dated at Hiles, Wis., this 26th day of January, 1987

Signature William B. Cochrane Title Land Surveyor Registration No. S-1107  
(County Surveyor, Registered Land Surveyor, or other duly authorized official)

Office of Register of Deeds, County of Forest  
I hereby certify that the within instrument was filed in this office for record on the 11 th day of March, 1987  
at 3:30 o'clock P. M.

Paul Aschenbrenner  
(Register of Deeds)

By \_\_\_\_\_ Deputy

FORM NO. 985-A

H.C. Miller Company

Stock No. 26273

DOCUMENT NUMBER 132385

43914302000

(e) Describe any material discrepancy between the location of the corner as restored or reestablished and the location of that corner as previously restored or reestablished by distance and direction. Show the discrepancy on the plan view drawing under (d), above. Show the distances between the corner as previously restored or reestablished and (1) the corner as restored or reestablished, and (2) to at least 2 of the witness monuments shown on the drawing in (d), above.

See drawing below.

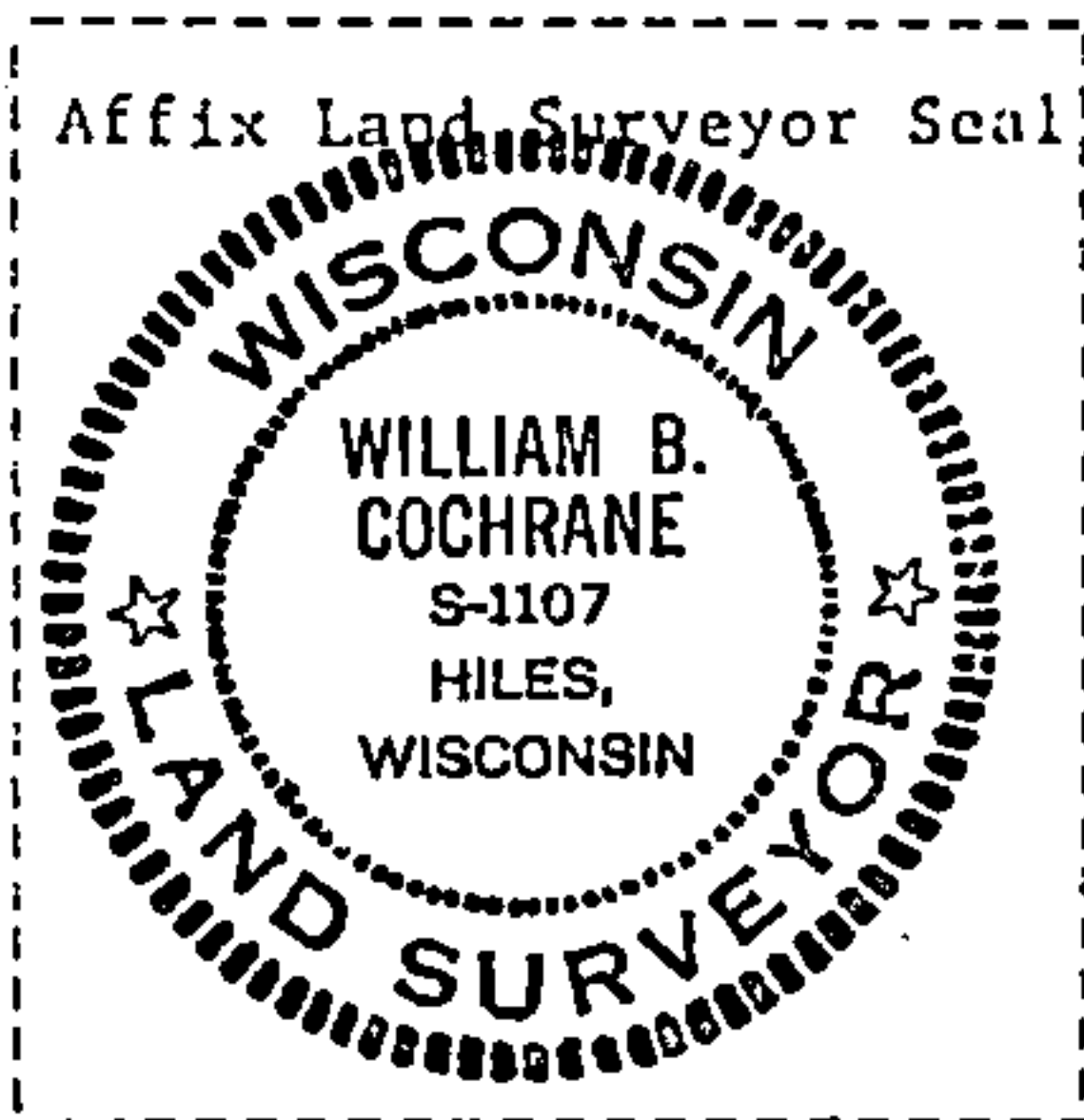
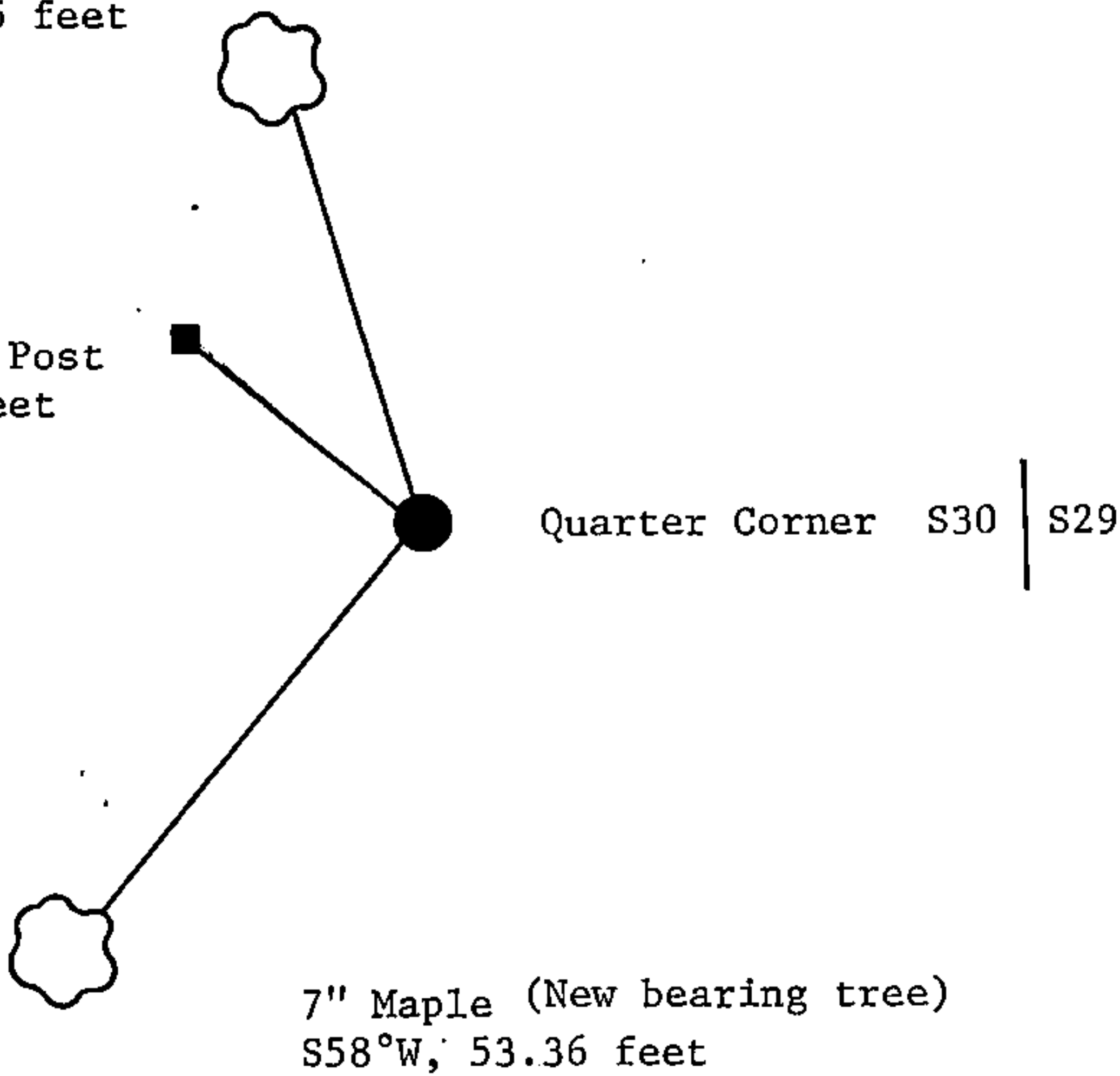
(f) Was the corner restored through acceptance of (1) an obliterated evidence location, or, (2) a found perpetuated location?

Restored from accepted evidence.

(g&h) Was the corner reestablished through lost corner proportionate methods? If so, show the method, including the directions and distances to other public land survey corners used as evidence or used for proportioning in determining the corner location?

7" Basswood (New bearing tree)  
N15°W, 64.95 feet

Steel Sign Post  
NW, 1.00 feet



(i) I, William B. Cochrane  
(type or print name) certify that the corner location shown on this record was determined by me or under my direction and control and that this U.S. Public Land Survey Monument Record is correct and complete to the best of my knowledge and belief.

William B. Cochrane January 26, 1987  
Signature Date

Survey requested by; Edward Wenger 3-9-87  
District Ranger Date

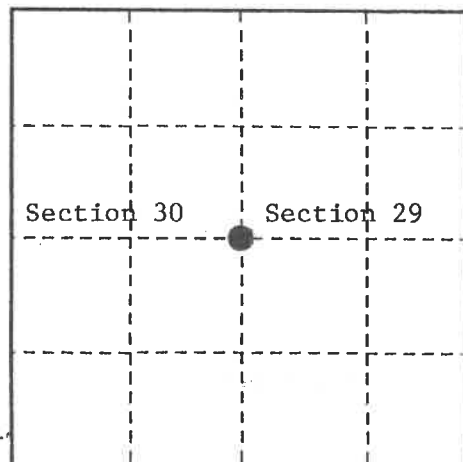
# U. S. PUBLIC LAND SURVEY MONUMENT RECORD

## INSTRUCTIONS:

This record shall show the location of the corner and shall include all of the following nine elements (a through i).

- (a) Identify the corner by reference to the U.S. public land survey system.  
 O = Corner monument restored.

Quarter Corner common to Sections 29 and 30,  
 T39N, R14E, Forest County, Wisconsin



- (b) Describe any record evidence, monument evidence, occupational evidence, testimonial evidence or any other material evidence you considered, and whether the monument was found or placed.  
 Original Government Survey in 1865 by William E. Daugherty and Alex McDill.

In 1986, William B. Cochrane, Land Surveyor with the Forest Service, found a 1½" x 42" iron pipe in a mound of rock. In place of pipe, set a 2½" diameter aluminum pipe monument, 3 feet long, 2½ feet in the ground with an aluminum cap stamped; T39N, R14E, 1/4, S29, S30, 1986, S-1107. Blazed and scribed the following bearing trees;

Maple	7"	S58°W	53.36 feet
Basswood	7"	N15°W	64.95 feet
Steel Sign Post		Northwest	1.00 feet

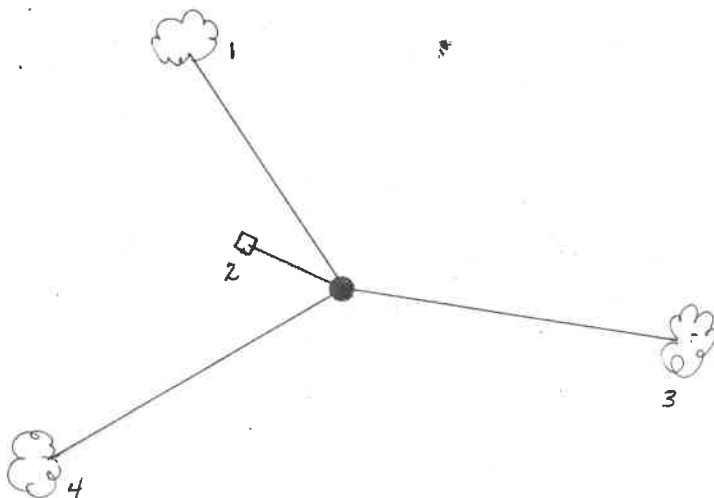
On 6-26-99, Gary L. Pisoni, RLS, found the monument as described above, the bearing trees as described below, and made new bearing trees as described below.

See previously recorded Land Corner Certificate, Document # 132385.

- (c) In the plan view drawing below, provide reference ties to at least 4 witness monuments, or, if the location is within a municipality, to at least 2 witness monuments. (witness monuments shall be made of concrete, natural stone, iron or other equally durable material.)

- (d) Show a plan view drawing depicting the relevant monuments and reference ties which is sufficient in detail to enable accurate relocation of the corner monument if the corner monument is disturbed. Indicate north.

1. Basswood, 10", N15°W, 64.95 feet
2. Steel Sign Post, N31°W, 0.95 feet
3. Popple, 6", S74°E, 19.06 feet(NBT)
4. Popple, 4", S40°W, 12.71 feet(NBT)



REGISTER'S OFFICE  
 Forest County, Wis.  
 Received for record this 27th day  
 of October A.D., 1999 at  
10:05 o'clock A.M. and recorded  
 in Vol. Corner Restoration  
 page T-5

Kay Swanson, Deputy  
 Register of Deeds

43914 302000

T-5

(e) Describe any material discrepancy between the location of the corner as restored or reestablished and the location of that corner as previously restored or reestablished by distance and direction. Show the discrepancy on the plan view drawing under (d). above. Show the distances between the corner as previously restored or reestablished and (1) the corner as restored or reestablished, and (2) to at least 2 of the witness monuments shown on the drawing in (d), above.

None

(f) Was the corner restored through acceptance of (1) an obliterated evidence location, or, (2) a found perpetuated location ?

Found perpetuated location.

(g & h) Was the corner reestablished through lost corner proportionate methods? If so, show the method, including the directions and distances to other public land survey corners used as evidence or used for proportioning in determining the corner location?

(1) I, Gary L. Pisoni

(type or print name) certify that the corner location shown on this record was determined by me or under my direction and control and that this U.S. Public Land Survey Monument Record is correct and complete to the best of my knowledge and belief.

Gary L. Pisoni

Signature

10-2-99

Date

CERTIFICATE READY FOR FILING:

C. B. Tipton  
District Ranger

