

## CERTIFIED LAND CORNER RESTORATION

State of Wisconsin

County of Forest

ss.

I, Jean F. Resvick, do hereby certify that on the 8th day of March, 1967, I found evidence of the Northeast section corner of Section 16 Township 40 North, Range 12 East, Fourth Principal Meridian, as described hereon; and that from this evidence I established a new monument and accessories as described hereon to perpetuate the original location of this corner:

## Description of original monument and accessories and subsequent restorations:

Original survey in 1859. Dependent resurvey in 1941 by Guy R. Veal. Set concrete monument, 2 ft. long, 6 ins. diam., 18 ins. in ground with an iron post, 22 ins. long, 1 in. diam. encased therein with brass cap marked:

T40N R12E

S9	S10
S16	S15

1941

from which: Maple 10", N59° 30'E, 44 lks.  
Maple 7", S63° 15'E, 52 lks.  
Maple 7", S33°W, 52 lks.  
Yellow birch 5", N44° 30'W, 30½ lks.

## Description of corner evidence found:

Monument as described above:

Maple 15", N59° 30'E, 15.3 ft. or 23 lks. (distance recorded as 44 lks.)

Maple 13", S63° 15'E, 34.3 ft.

Maple 10", S33°W, 34.3 ft.

Yellow birch 6", N44° 30'W, 20.13 ft.

Fence corner on west side of monument.

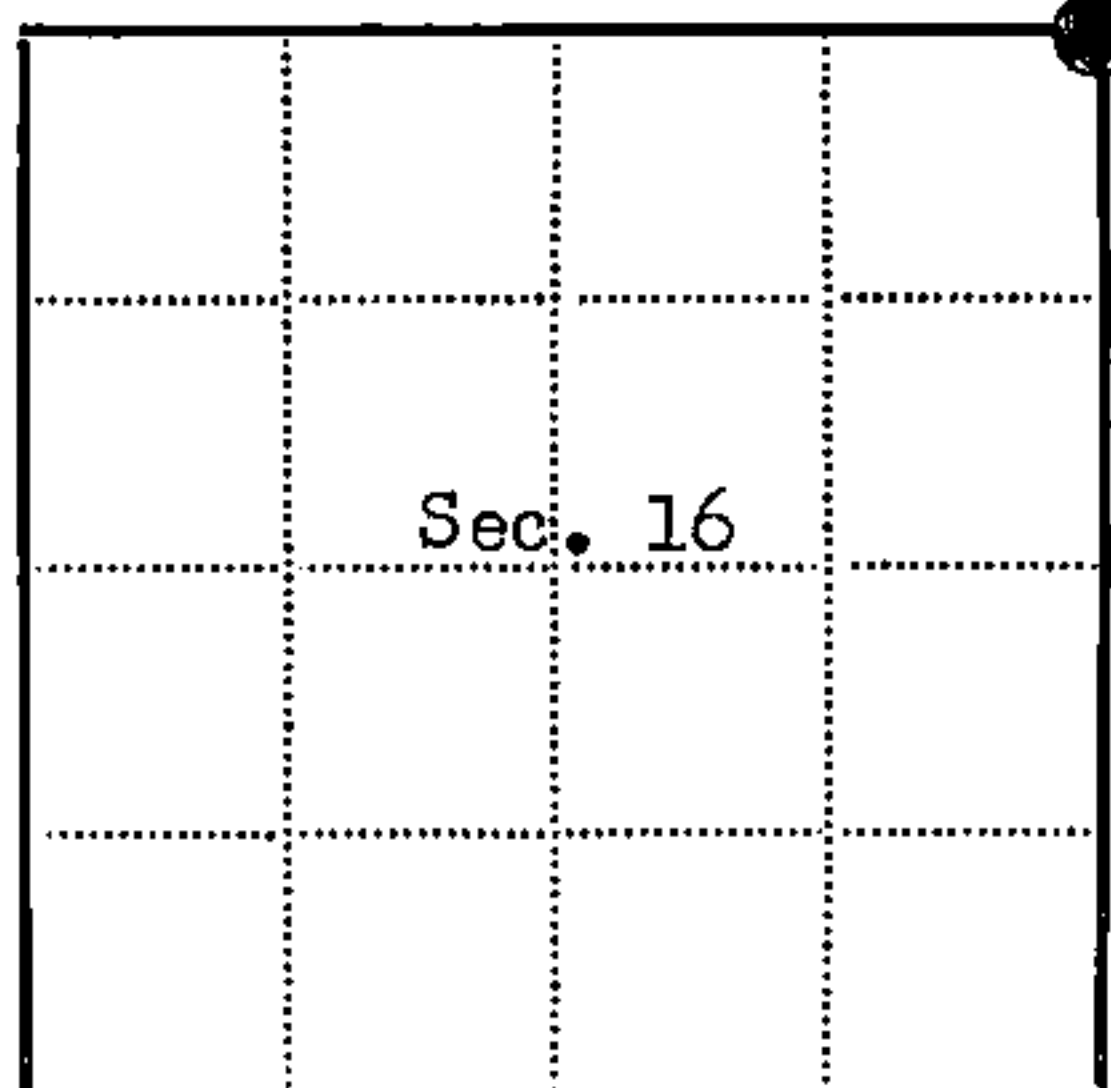
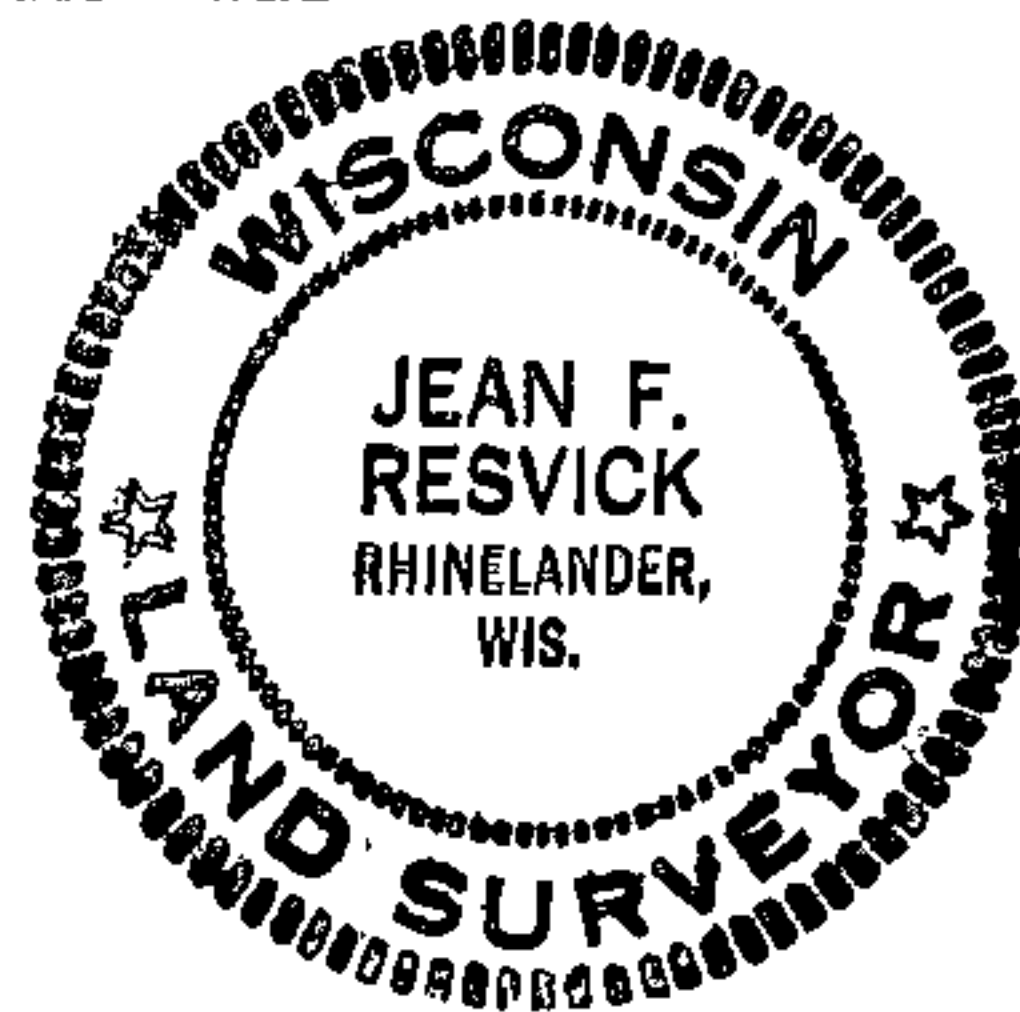
Description of ~~monument~~ and accessories I established to perpetuate the original location of this corner:

No new accessories added.

U. S. Forest Service bearing tree shields were placed on each bearing tree.

I opened blaze on 15 inch maple to find scribing to prove distance was recorded in error.

44012090000



● = Corner monument restored

□ =

Resident witnesses

Dated at Rhineland, Wisconsin, this 21st day of March, 1967.Signature Jean F. Resvick Title Cadastral Surveyor  
(County Surveyor, Registered Land Surveyor, or other duly authorized official)Surveyors Registration No. S-802 DOC. NO. 94215Office of Register of Deeds County of ForestI hereby certify that the within instrument was filed in this office for record on the 27th day of February, 1968, and was filed in Book No. I Page No.  of County Records.Signature Eugene Stetson Title Register Of DeedsTownship 40 North, Range 12 East, Section 16, Index No. J-13, Page No. 

13

U.S. PUBLIC LAND SURVEY MONUMENT RECORD

Index No. J-13

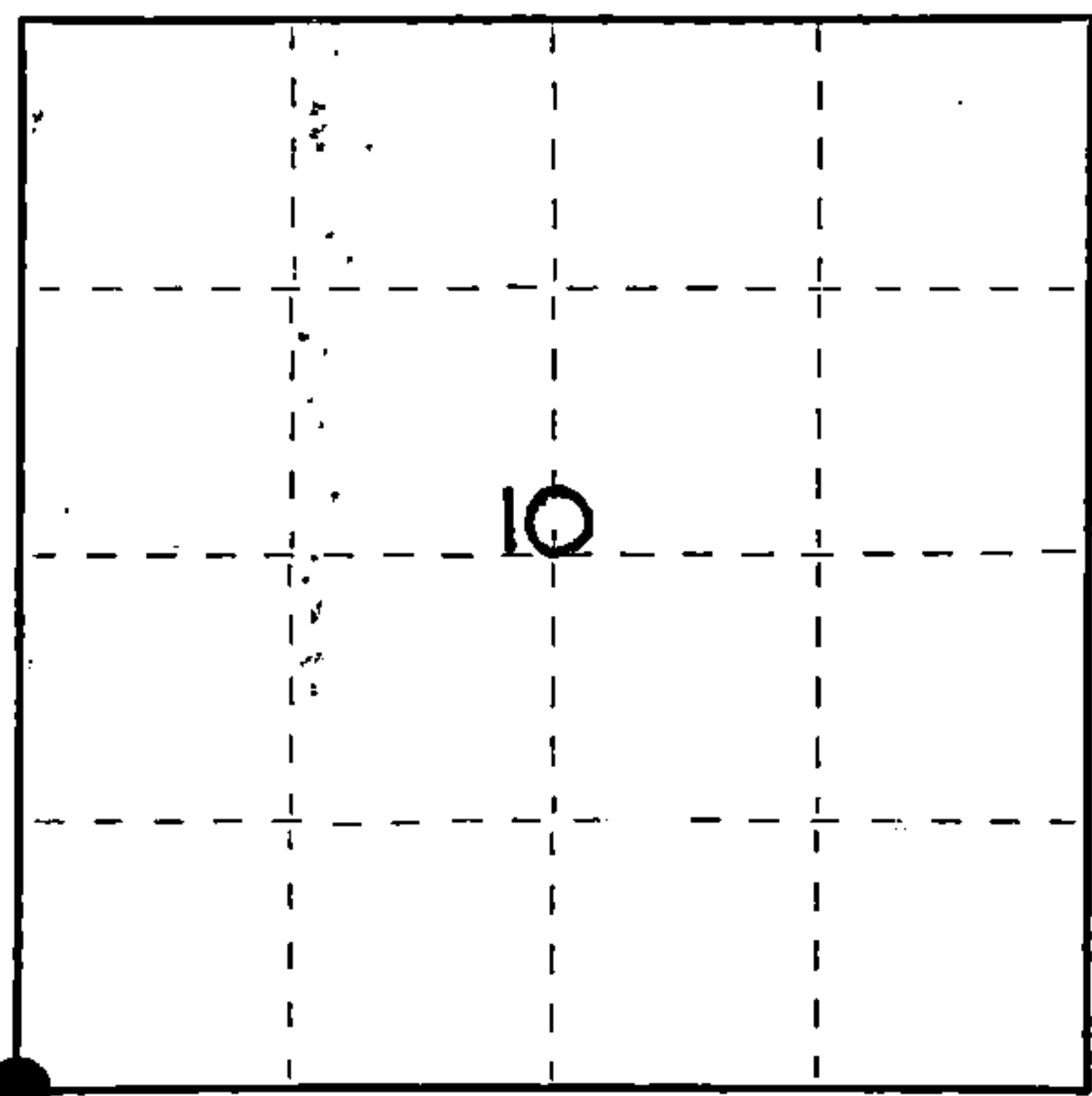
State of Wisconsin }  
County of Forest } ss.

I Robert H. Winat, do hereby  
certify that on the 8th day  
of November, 1985, I found  
evidence of the Section  
corner of 9, 10, 15, 16  
Township 40, North, Range  
12 East, Fourth Principal Meridian,  
as described hereon; and that from this evidence  
I established a new monument and accessories  
as described hereon to perpetuate the original  
location of this corner.

Resident witnesses:

Mike Stevens

Mike Lukasko



● = Corner monument restored.

History of original corner establishment:

Wm. Daugherty established in 1859 and set a wood post.

G.L.O. resurvey by Guy Veal in 1941 set a concrete w/brass cap  
and these BT's: Maple 10", N59½°E, 44 Lks.

Maple 7", S63½°E, 52 Lks.

Maple 7", S33°W, 52 Lks.

Y. Birch 5", N44½°W, 30½ Lks.

In 1967 Jean Resvick recovered the G.L.O. monument and BT's.

Description of corner evidence found:

In 1985 found the G.L.O. Brass cap and the following BT's:

Maple 10" S33°W 34.41'

Maple 19" N60°E 15.40'

Maple 15" S63½°E 33.94'

Sign Post N71°E 1.40'

Description of monument and accessories I established to perpetuate the original location of this corner.

Set the following new BT:

Maple 10" N46°W 22.55'

Dated at Rhineland, Wis., this 12 day of June, 1985.

Signature Robert H. Winat Title Land Surveyor Registration No. 1090  
(County Surveyor, Registered Land Surveyor, or other duly authorized official)

Office of Register of Deeds, County of Forest. I hereby certify that the within  
instrument was filed in this office for record on the 24th day of July, 1985  
at 1:10 o'clock P. M.

Paul Aschenbrenner  
(Register of Deeds)

By \_\_\_\_\_ Deputy

FORM NO. 985-A

H.C. Miller Company  
ST. LOUIS, MO.

Stock No. 26273

DOCUMENT NUMBER **128478**

44612090000

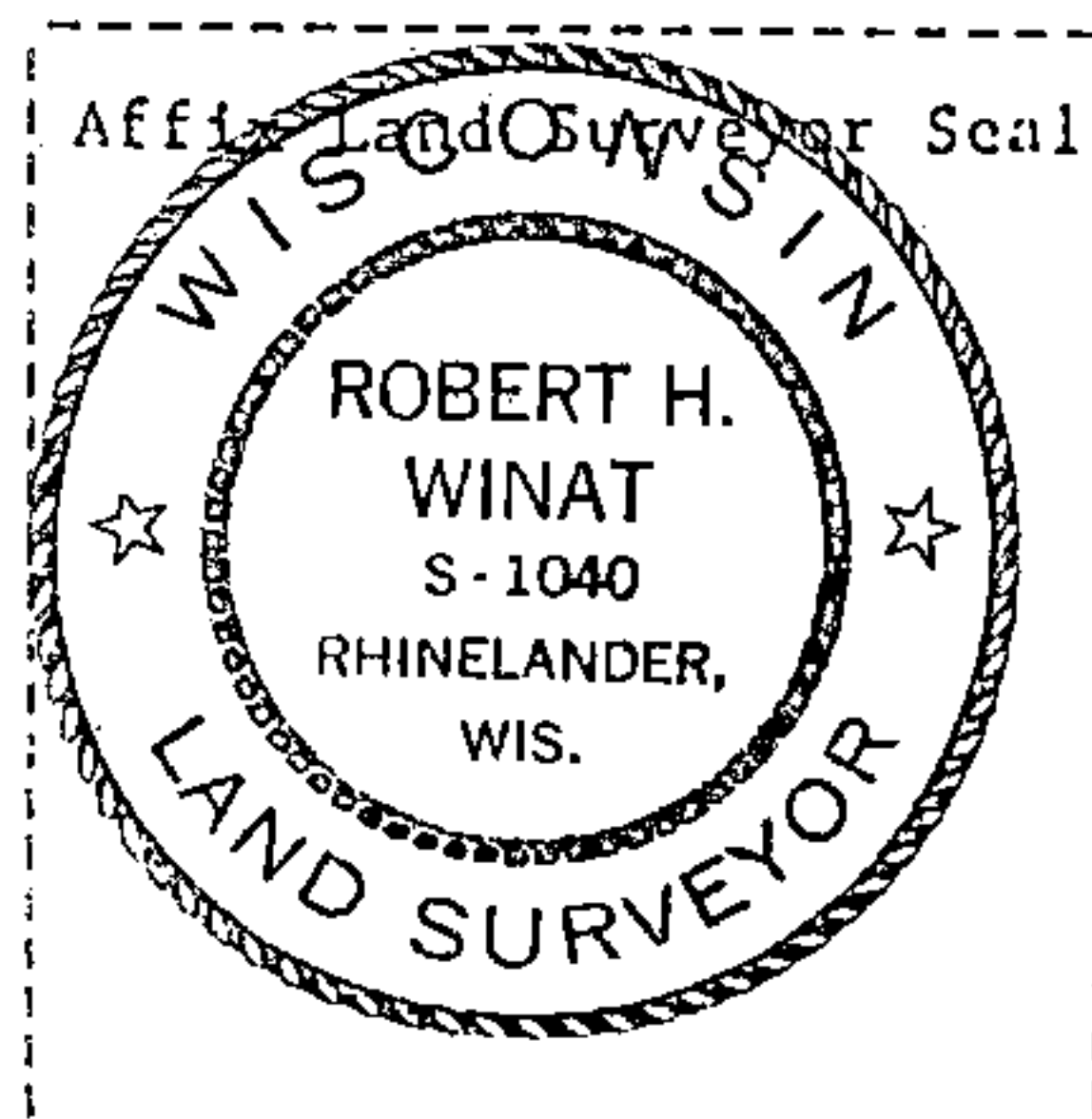
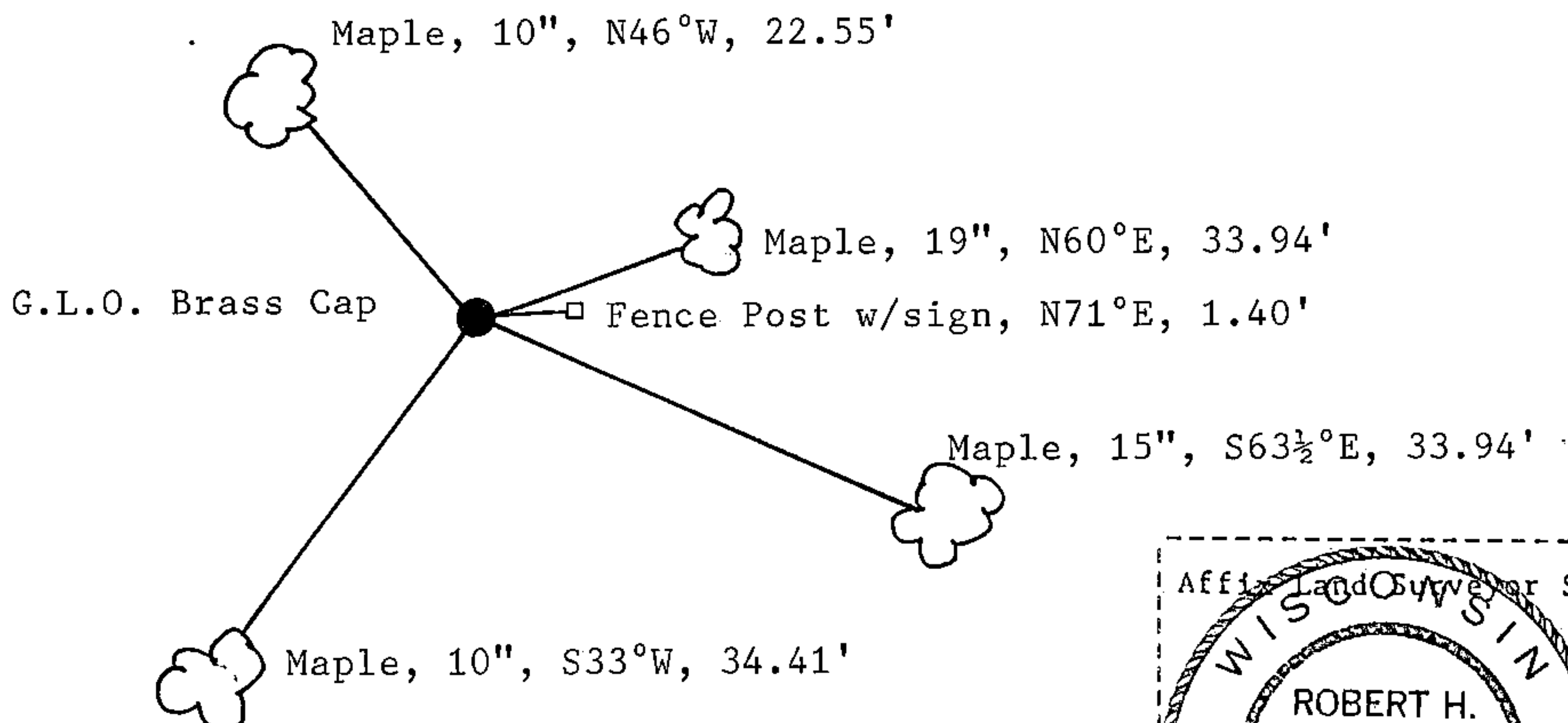
(e) Describe any material discrepancy between the location of the corner as restored or reestablished and the location of that corner as previously restored or reestablished by distance and direction. Show the discrepancy on the plan view drawing under (d), above. Show the distances between the corner as previously restored or reestablished and (1) the corner as restored or reestablished, and (2) to at least 2 of the witness monuments shown on the drawing in (d), above.

N/A

(f) Was the corner restored through acceptance of (1) an obliterated evidence location, or, (2) a found perpetuated location?

Found perpetuated location.

(g&h) Was the corner reestablished through lost corner proportionate methods? If so, show the method, including the directions and distances to other public land survey corners used as evidence or used for proportioning in determining the corner location?



(i) 1. Robert H. Winat  
[type or print name] certify that the corner location shown on this record was determined by me or under my direction and control and that this U.S. Public Land Survey Monument Record is correct and complete to the best of my knowledge and belief.

Signature Robert H. Winat Date 12 June 1985