

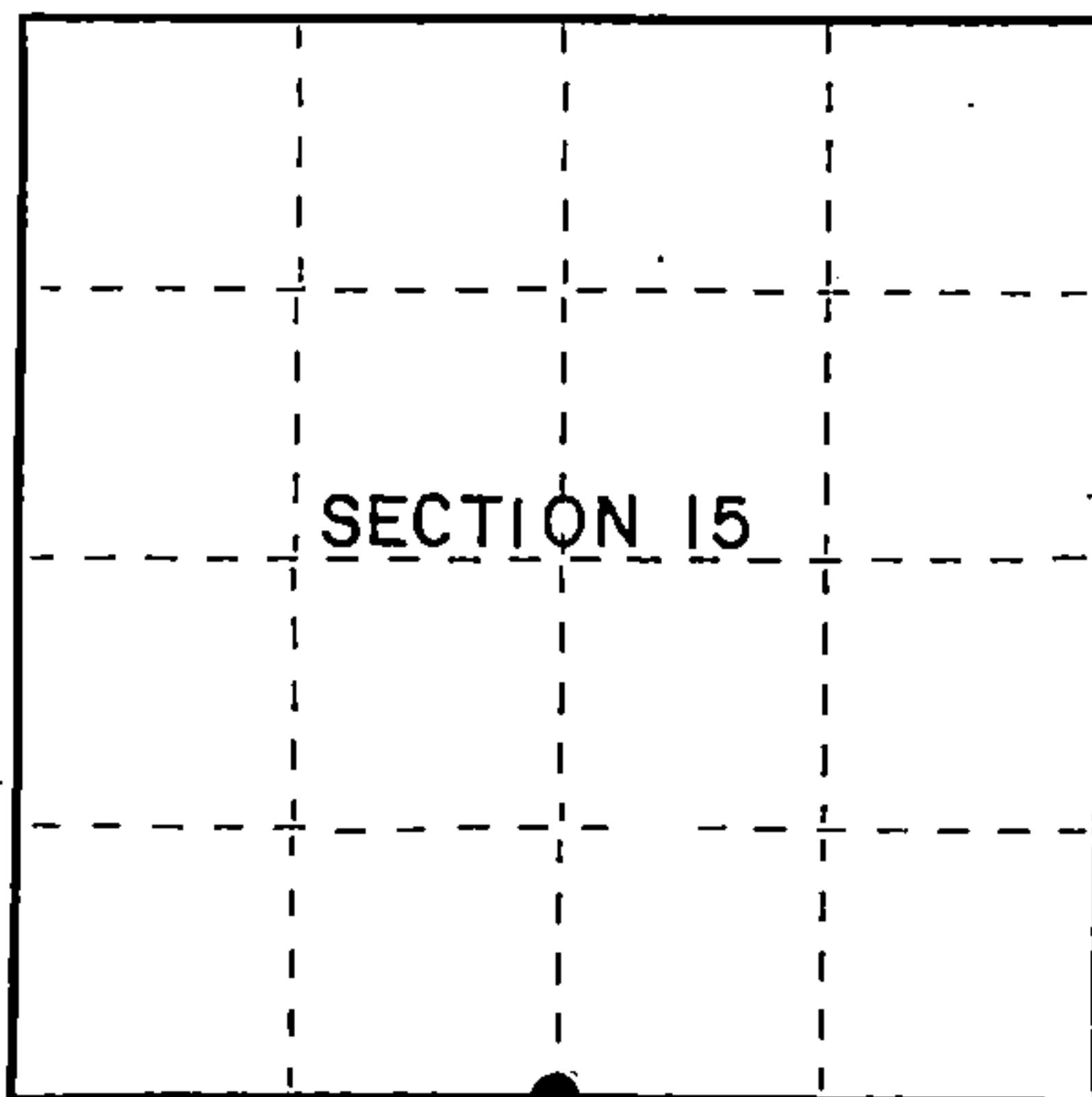
U.S. PUBLIC LAND SURVEY MONUMENT RECORD

Index No. N-15

State of Wisconsin }
 County of Forest } ss.

I Gary L. Pisoni, do hereby
 certify that on the 30th day
 of October, 19 86, I found
 evidence of the South quarter
 corner of Section 15
 Township 40, North, Range
12E, Fourth Principal Meridian,
 as described hereon; and that from this evidence
 I established a new monument and accessories
 as described hereon to perpetuate the original
 location of this corner.

Resident witnesses:

Bill EricksonArnold Townsend

○ = Corner monument restored.

History of original corner establishment:

1941 Dependent resurvey by Guy R. Veal.

Guy R. Veal set a 2" diameter by 36" long iron pipe with a brass cap stamped: U.S.
 General Land Office Survey, 1/4, S15, S22, 1941.

Description of corner evidence found:

Monument as described and in place, from which the following bear:

All bearing trees dead.

Description of monument and accessories I established to perpetuate the original location of this corner.

Blazed and scribed the following new bearing trees:

Sugar Maple	7"	N.68°E.	49.77 feet
Sugar Maple	8"	S.35°W.	15.86 feet
Sugar Maple	6"	N.46°W.	32.30 feet
Steel sign post		S.67°E.	1.21 feet

Dated at Iron River, MI, Wis., this 2nd day of November, 19 87.

Signature Gary L. Pisoni Title Land Surveyor Registration No. S-1634
 (County Surveyor, Registered Land Surveyor, or other duly authorized official)

Office of Register of Deeds, County of Forest, I hereby certify that the within
 instrument was filed in this office for record on the 5th day of February, 19 88
 at 12:45 o'clock P. M.

Paul Achenbacher
 (Register of Deeds)

By _____ Deputy

FORM NO. 985-A

H.C. Miller Company
Minneapolis, Minn.

Stock No. 26273

DOCUMENT NUMBER 134620

44012150020

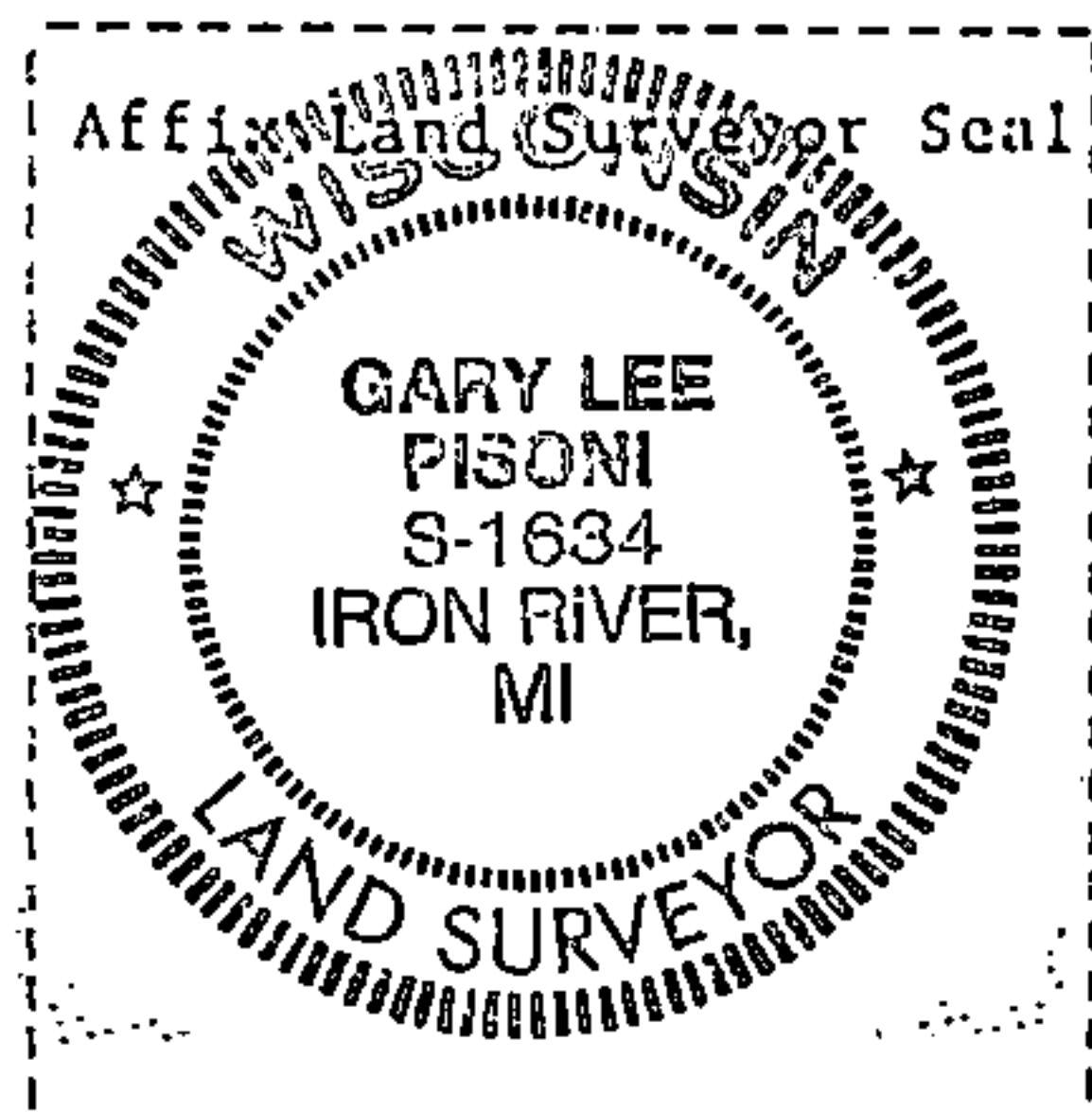
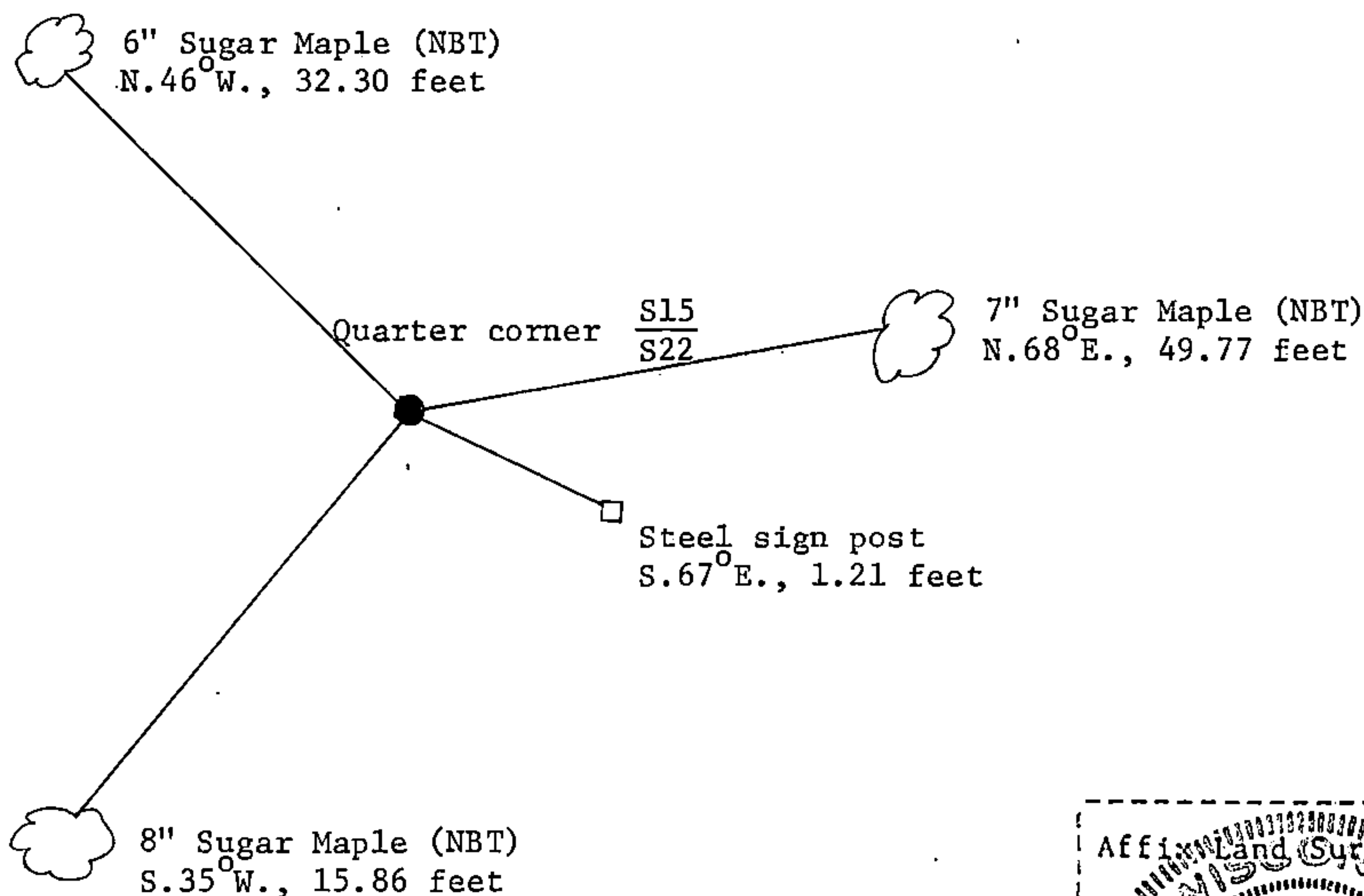
(e) Describe any material discrepancy between the location of the corner as restored or reestablished and the location of that corner as previously restored or reestablished by distance and direction. Show the discrepancy on the plan view drawing under (d), above. Show the distances between the corner as previously restored or reestablished and (1) the corner as restored or reestablished, and (2) to at least 2 of the witness monuments shown on the drawing in (d), above.

See drawing below.

(f) Was the corner restored through acceptance of (1) an obliterated evidence location, or, (2) a found perpetuated location?

Restored through acceptance of a found perpetuated location.

(g&h) Was the corner reestablished through lost corner proportionate methods? If so, show the method, including the directions and distances to other public land survey corners used as evidence or used for proportioning in determining the corner location?



(i) I, Gary L. Pisoni
(type or print name) certify that the corner location shown on this record was determined by me or under my direction and control and that this U.S. Public Land Survey Monument Record is correct and complete to the best of my knowledge and belief.

Signature

Date

Survey requested by:

Jeffrey H. Kott
District Ranger

7/7/83
Date