

160520

FORM 985 H. C. MILLER CO., MILWAUKEE

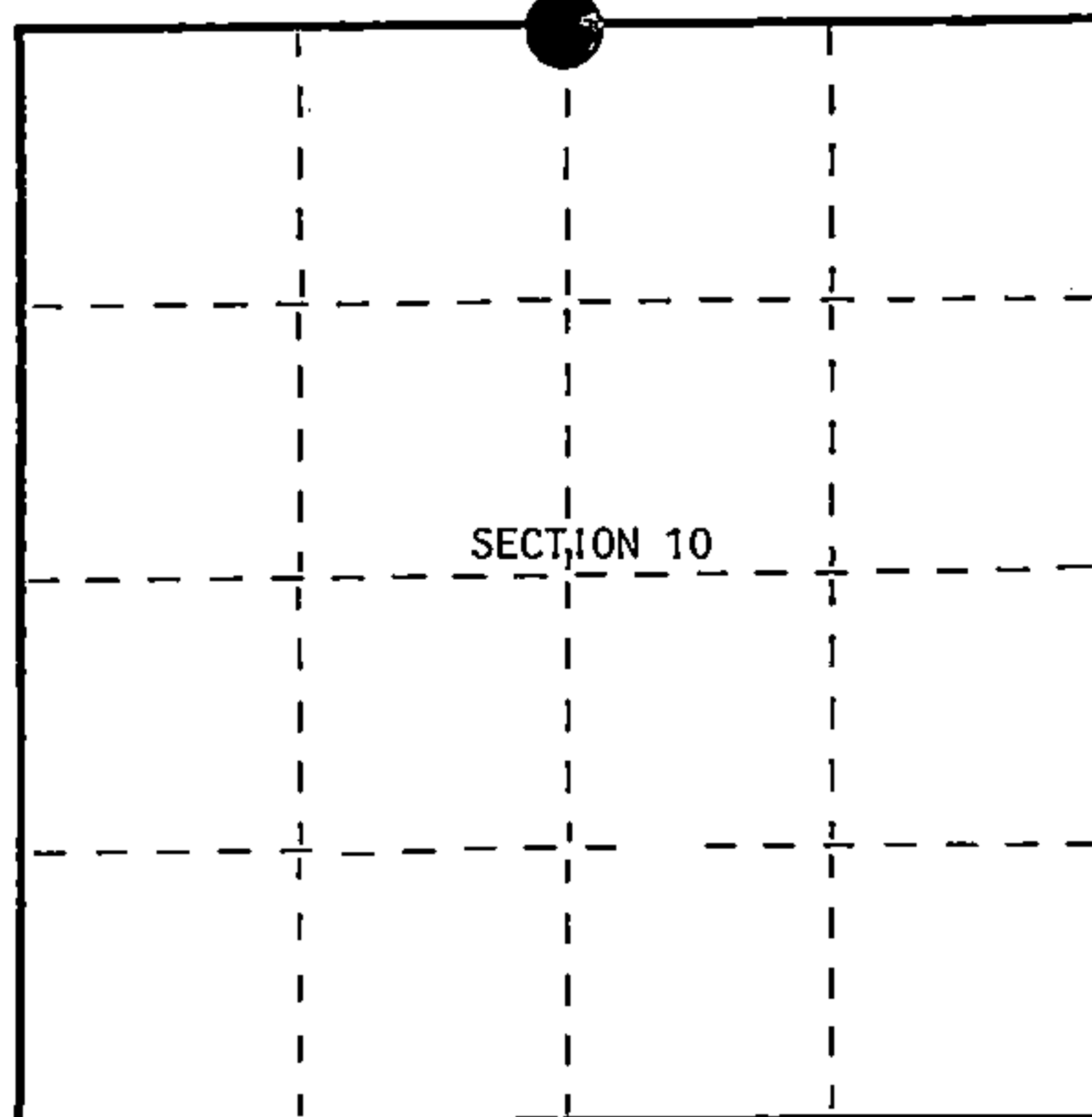
State of Wisconsin }
County of Forest } ss.

I James H. Moore, do hereby
certify that on the 5th day
of June, 1996, I found
evidence of the North Quarter
corner of Section 10
Township 40, North, Range
13 East, Fourth Principal Meridian,
as described hereon; and that from this evidence
I established a new monument and accessories
as described hereon to perpetuate the original
location of this corner.

Resident witnesses:

Stu Peterson

Steve Applekamp



○ = Corner monument restored.

CERTIFIED LAND CORNER RESTORATION

Index No. E-15

History of original corner establishment:

Original corner established in 1865 by William E. Daugherty. 40.05 set quarter corner common to Sections 3 and 10 from which the following bear;

Tamarack	10"	S81°E	12 links
Tamarack	8"	N68°W	17 links

Description of corner evidence found:

No corner evidence was recovered. I re-established the corner position at mid-point and on line between the northeast and the northwest section corners of Section 10.

Description of monument and accessories I established to perpetuate the original location of this corner.

At the corner position, set a 2½" diameter aluminum pipe monument, 3 feet long, 6" below gravel shoulder, with an aluminum cap stamped; T40N, R13E, ¼, S10, S3, 1996, S-1641, from which the following bear;

Reference Corner	-	North	55.00 feet
Reference Corner	-	South	70.00 feet
Sugar	5"	S42°W	110.54 feet
Sugar	22"	N51°W	114.17 feet

Dated at Hiles, Wis., this 6th day of January, 1997

Signature James H. Moore Title Land Surveyor Registration No. S-1641
(County Surveyor, Registered Land Surveyor, or other duly authorized official)

Office of Register of Deeds, County of Forest I hereby certify that the within
instrument was filed in this office for record on the 17th day of December, 1997
at 9:27 o'clock A. M.

(Register of Deeds)

By Shirley J. Kuehling Deputy

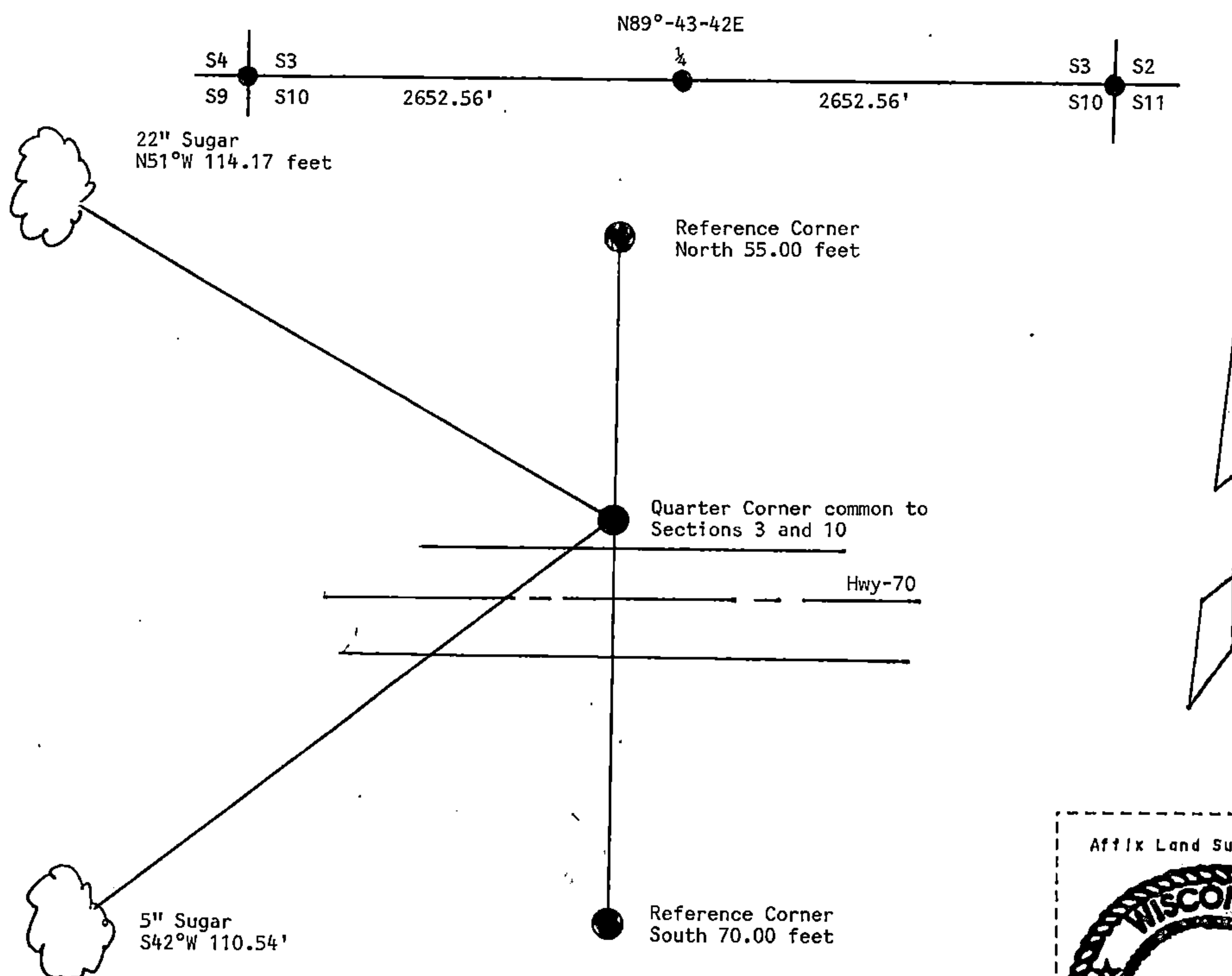
44013030020

(e) Describe any material discrepancy between the location of the corner as restored or reestablished and the location of that corner as previously restored or reestablished by distance and direction. Show the discrepancy on the plan view drawing under (d), above. Show the distances between the corner as previously restored or reestablished and (1) the corner as restored or reestablished, and (2) to at least 2 of the witness monuments shown on the drawing in (d), above.

See drawing below.

(f) Was the corner restored through acceptance of (1) an obliterated evidence location, or, (2) a found perpetuated location?

(g & h) Was the corner reestablished through lost corner proportionate methods? If so, show the method, including the directions and distances to other public land survey corners used as evidence or used for proportioning in determining the corner location?



(1) I, James H. Moore
(type or print name) certify that the corner location shown on this record was determined by me or under my direction and control and that this U.S. Public Land Survey Monument Record is correct and complete to the best of my knowledge and belief.

correct and complete to the best of your knowledge.

James A. Moore
Signature

January 6, 1997

Date _____

CERTIFICATE READY FOR FILING:

District Ranger

