

ORIGINAL ON FILE IN CO CLERK'S OFFICE
COPY HERE FOR REFERENCE

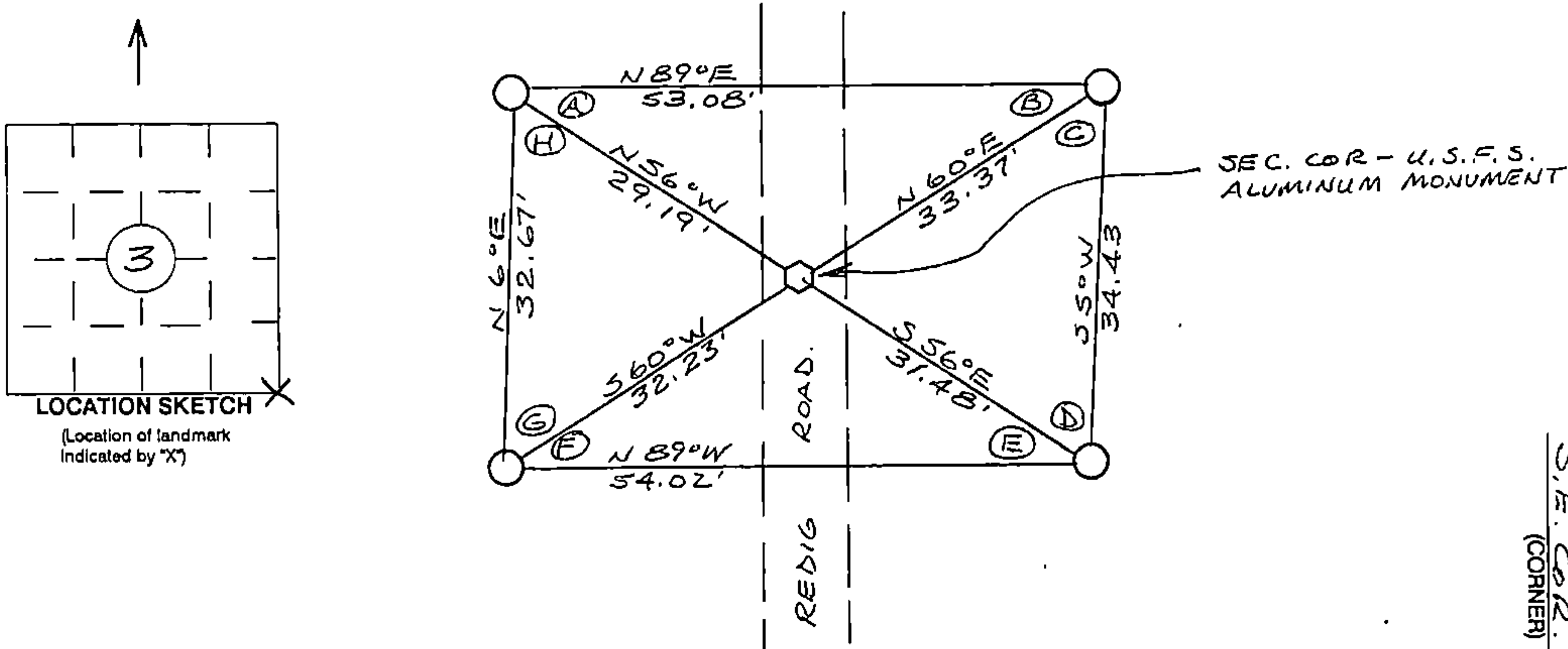
RECORD AND CERTIFICATION OF U.S.
PUBLIC LAND SURVEY CONTROL STATION

Wisconsin Department of Transportation

ED716 687

District	Project ID	Located By		
7	9090-01-00	J.R. WALLIN - SURVEY CREW CHIEF		
Corner	Township	Range (E,W)	County	
S.E. COR. SEC. 3	T40N	R14E	FOREST	
Wisconsin Coordinates	East (X)	North (Y)	Elevation (Z)	Zone
From AYRES	2,326,784.14	294,950.79		N
Control Station Name	East (X)	North (Y)	Elevation (Z)	Zone
Horizontal - NORTH AMERICAN, 1927		CONTROL DATUM		
		Vertical - MEAN SEA LEVEL, 1929 ADJUSTMENT		
SURVEY CONTROL				
Horizontal - Order		Vertical - Order		

SKETCH



I hereby certify that on the date of NOV. 9, 1994
the above corner was located by a marker and/or references established by
WILLIAM B. COCHRANE S-1107
(registered land surveyor) (registration no.)

I further certify that to perpetuate the location of said corner, on the date of
NOV. 9, 1994 at the exact location thereof,
a permanent marker or witness monuments consisting of
FOUR 2 1/2" x 30" BERNTSEN MAGNETIC
ALUMINUM MONUMENTS
were located as shown above.

ANGLE TABLE	
A =	34° 25' 10"
B =	29° 38' 02"
C =	55° 18' 23"
D =	60° 38' 25"
E =	32° 26' 55"
F =	31° 36' 17"
G =	53° 26' 58"
H =	62° 29' 50"

440140300000

Signature (District Survey Supervisor)	COORD.
J.R. Wallin	

S.E. COR. (CORNER)
3 (SECTION)
40N (TOWN)
14E (RANGE)

U.S. PUBLIC LAND SURVEY MONUMENT RECORD

Index No. E-17

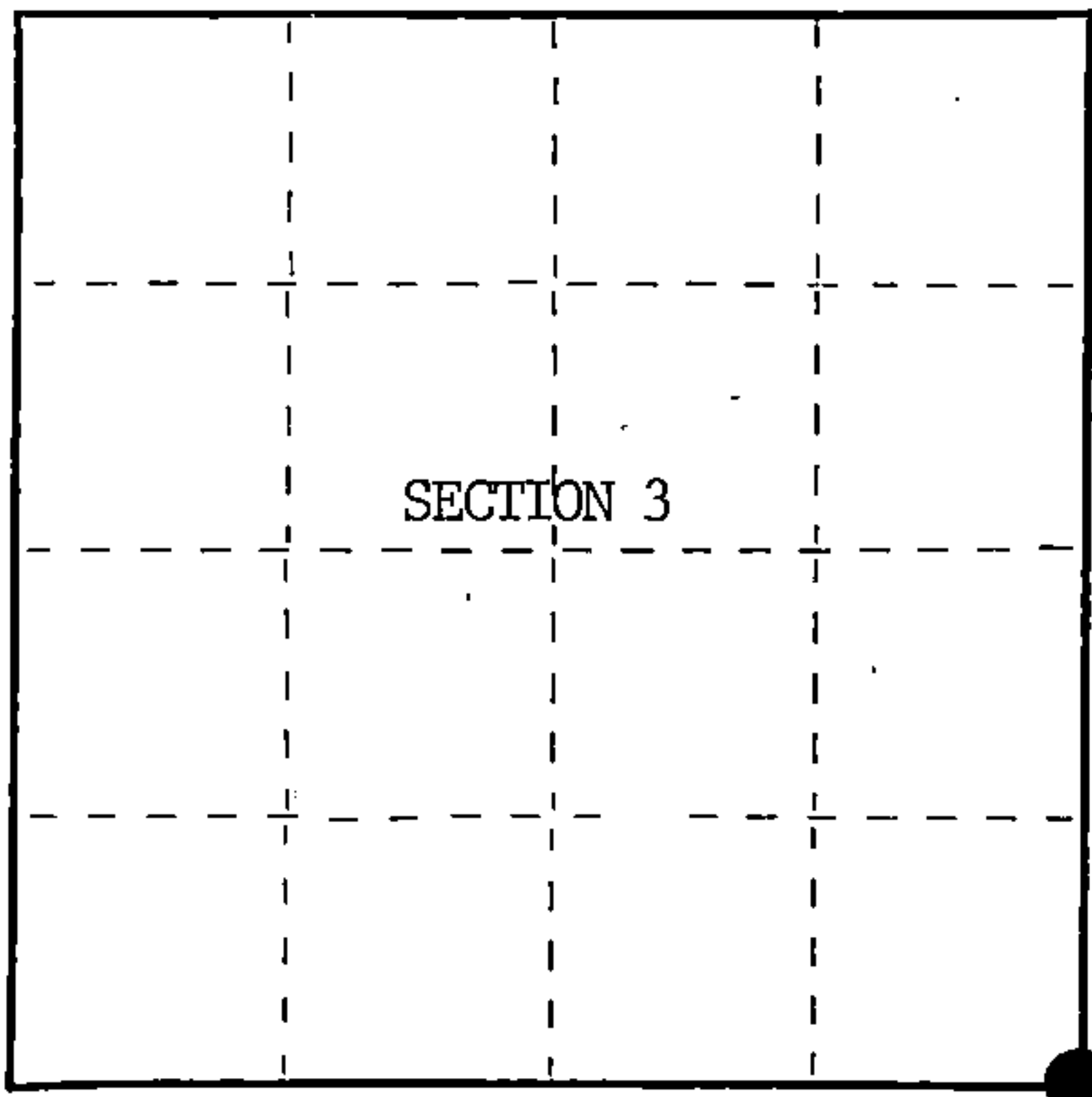
State of Wisconsin }
County of Forest ss.

I, William B. Cochrane, do hereby
certify that on the 29th day
of February, 1985, I found
evidence of the Southeast Section
corner of Section 3
Township 40 North, Range
14 East, Fourth Principal Meridian,
as described hereon; and that from this evidence
I established a new monument and accessories
as described hereon to perpetuate the original
location of this corner.

Resident witnesses:

David Brownell

Tony Tillman



○ = Corner monument restored.

History of original corner establishment:

Original Government Survey in 1865 by William E. Daugherty. North between Sections 10 and 11, 80.00 chains, set Section Corner Post to Sections 2, 3, 10 and 11, from which the following bear;

Cedar	12"	S45°W	29 lks.
Cedar	12"	N73°E	12 lks.

Description of corner evidence found:

Found Gravel Road which bears North and South.

The corner position is re-established in the center-line of the gravel road, and at mid-point between the East Quarter Corner of Section 3 and the East Quarter Corner of Section 10.

Description of monument and accessories I established to perpetuate the original location of this corner.

At the corner position, set a 2½ inch diameter aluminum pipe monument, 3 feet long, 3½ feet in the ground (6 inches below the road), with an aluminum cap stamped; T40N R14E, S2, S3, S10, S11, 1985, S-1107. From which the following new blazed and scribed bearing trees bear;

Spruce	4"	S34°E	41.95 feet
Aspen	7"	S39°W	63.04 feet
Aspen	8"	N54°W	25.63 feet
Steel Sign Post		West	13.00 feet

Dated at Hiles, Wis., this 12th day of October, 1986

Signature William B. Cochrane Title Land Surveyor Registration No. S-1107
(County Surveyor, Registered Land Surveyor, or other duly authorized official)

Office of Register of Deeds, County of Forest, I hereby certify that the within instrument was filed in this office for record on the 11th day of March, 1987 at 3:30 o'clock P. M.

Paul Aschenbrenner
(Register of Deeds)

By Deputy

FORM NO. 985-A
H.C. Miller Company
Burlington, Wisconsin

Stock No. 26273

DOCUMENT NUMBER 132445

44014030000

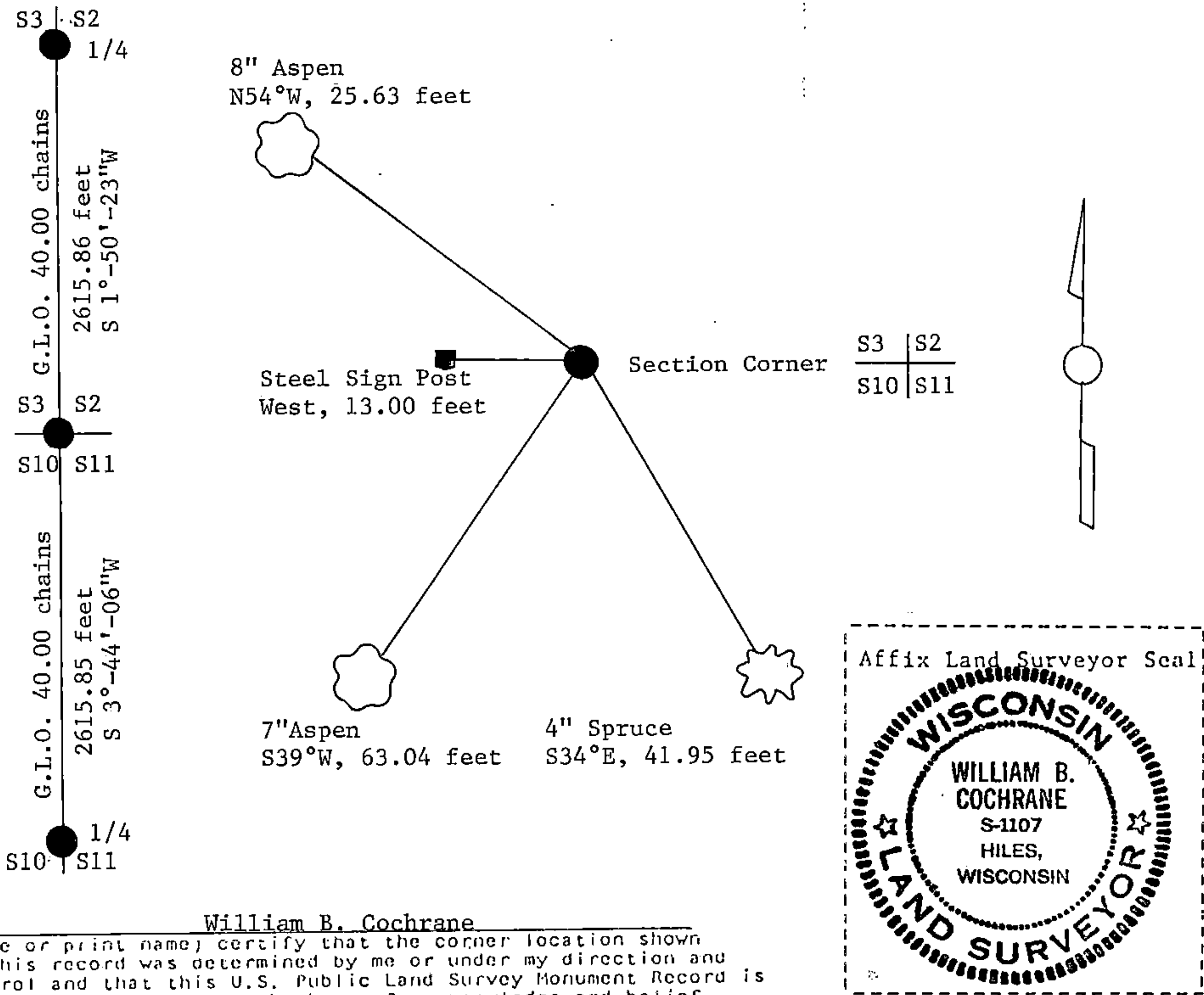
(e) Describe any material discrepancy between the location of the corner as restored or reestablished and the location of that corner as previously restored or reestablished by distance and direction. Show the discrepancy on the plan view drawing under (d), above. Show the distances between the corner as previously restored or reestablished and (1) the corner as restored or reestablished, and (2) to at least 2 of the witness monuments shown on the drawing in (d), above.

See drawing below.

(f) Was the corner restored through acceptance of (1) an obliterated evidence location, or, (2) a found perpetuated location?

(g&h) Was the corner reestablished through lost corner proportionate methods? If so, show the method, including the directions and distances to other public land survey corners used as evidence or used for proportioning in determining the corner location?

Re-established through lost corner proportionate methods and accepted evidence.



(i) I, William B. Cochrane
(type or print name) certify that the corner location shown on this record was determined by me or under my direction and control and that this U.S. Public Land Survey Monument Record is correct and complete to the best of my knowledge and belief.

William B. Cochrane October 14, 1986
Signature Date

Certificate ready for filing: [Signature] 3-9-87
District Ranger Date