

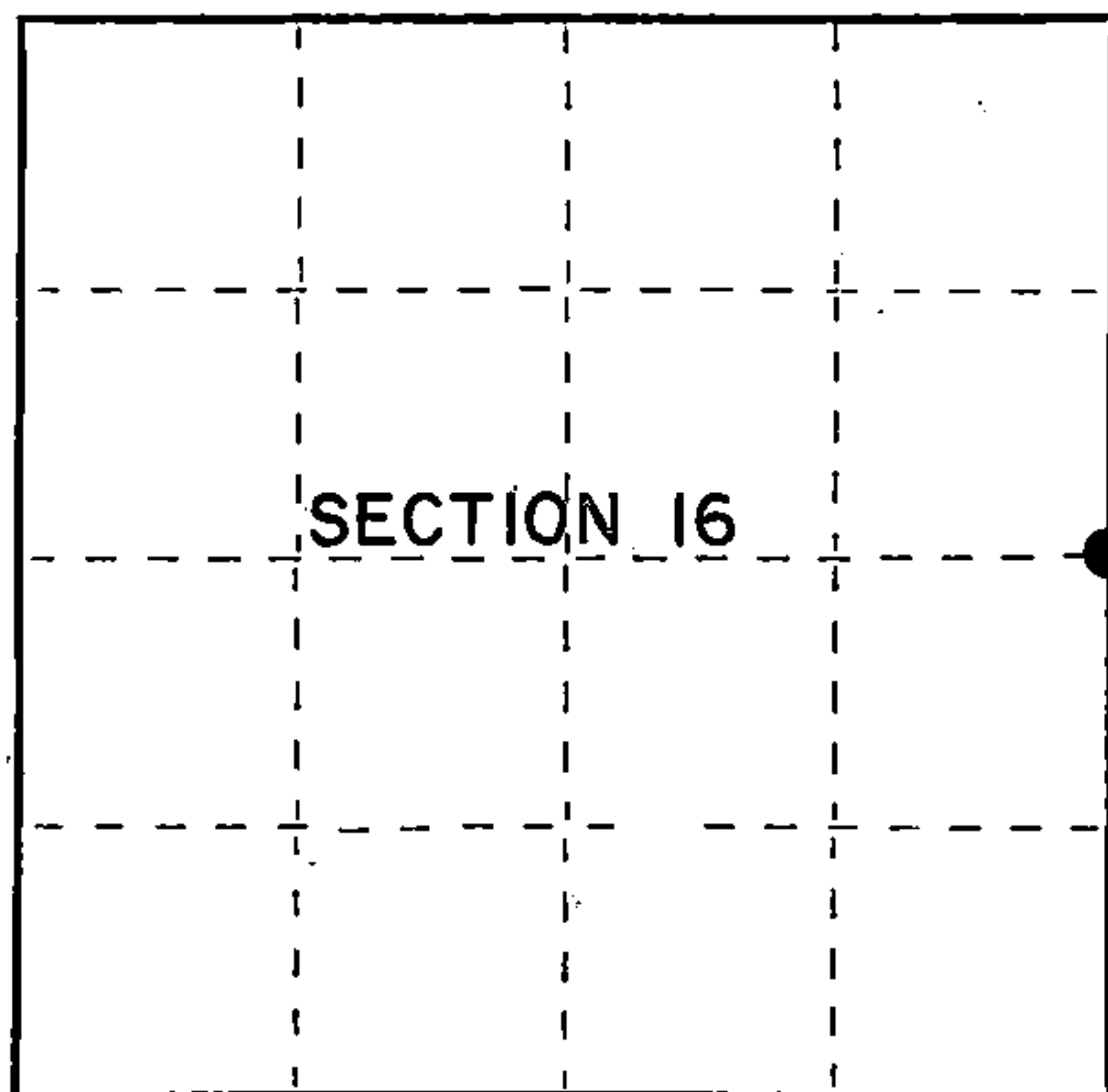
## U.S. PUBLIC LAND SURVEY MONUMENT RECORD

Index No. L-13

State of Wisconsin }  
 County of Forest } ss.

I, Gary L. Pisoni, do hereby  
 certify that on the 9th day  
 of September, 1986, I found  
 evidence of the East quarter  
 corner of Section 16  
 Township 40, North, Range  
14 East, Fourth Principal Meridian,  
 as described hereon; and that from this evidence  
 I established a new monument and accessories  
 as described hereon to perpetuate the original  
 location of this corner.

Resident witnesses:

Mark Selmo

○ = Corner monument restored.

History of original corner establishment:

Original Government Survey in 1865 by Wm. E. Daughterty. North between  
 Section 15 and 16, 40.00 chains, set Quarter post to Sections 15 and 16, from which  
 the following bear:

Fir	6"	S.10°W.	18 links
Fir	8"	N.66°E.	16 links

Description of corner evidence found:

No corner evidence was recovered.

The corner position is re-established at proportionate distance and on line  
 between the Northeast and Southeast Section corners of Section 16.

Description of monument and accessories I established to perpetuate the original location of this corner.

At the corner position, set a 2½ inch diameter aluminum pipe monument, 3 feet long,  
 33" in the ground, with an aluminum cap stamped: T40N, R14E, 1/4, S16, S15, 1986,  
 S-1634. From which the following new blazed and scribed bearing trees bear (all  
 measurements taken to a nail in side of tree):

Balsam	10"	S.89°E.	22.88 feet
Black Cherry	8"	S.10°W.	63.19 feet
Balsam	9"	N.16°W.	24.03 feet
Steel sign post		S.73°W.	1.19 feet

Dated at Iron River, MI, ~~Wis~~, this 5th day of May, 1987.

Signature Gary L. Pisoni Title Land Surveyor Registration No. S-1634  
 (County Surveyor, Registered Land Surveyor, or other duly authorized official)

Office of Register of Deeds, County of Forest, I hereby certify that the within  
 instrument was filed in this office for record on the 18th day of March, 1988  
 at 12:50 o'clock P. M.

Paul Aschenbrenner  
 (Register of Deeds)

By \_\_\_\_\_ Deputy

44014162000

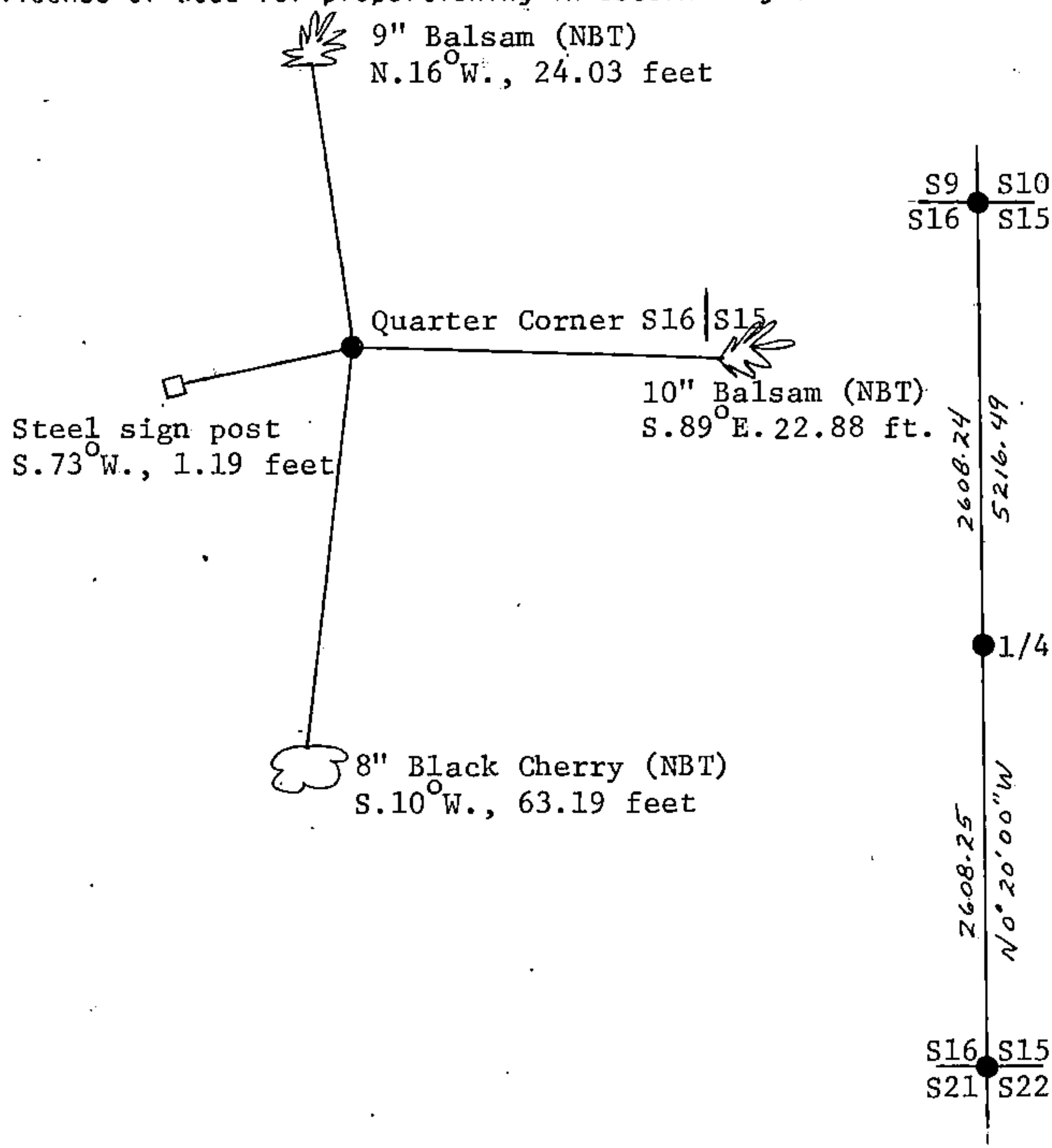
(e) Describe any material discrepancy between the location of the corner as restored or reestablished and the location of that corner as previously restored or reestablished by distance and direction. Show the discrepancy on the plan view drawing under (d), above. Show the distances between the corner as previously restored or reestablished and (1) the corner as restored or reestablished, and (2) to at least 2 of the witness monuments shown on the drawing in (d), above.

See drawing below

(f) Was the corner restored through acceptance of (1) an obliterated evidence location, or, (2) a found perpetuated location?

Restored through lost corner proportionate methods.

(g&h) Was the corner reestablished through lost corner proportionate methods? If so, show the method, including the directions and distances to other public land survey corners used as evidence or used for proportioning in determining the corner location?



(i) I, Gary L. Pisoni  
(type or print name) certify that the corner location shown on this record was determined by me or under my direction and control and that this U.S. Public Land Survey Monument Record is correct and complete to the best of my knowledge and belief.

Signature

*Gary L. Pisoni*

Date

*May 5<sup>th</sup> 1987*

Survey requested by:

*Edward [Signature]*  
District Ranger

Date

*3-8-88*