

Stock No. 26273

DOCUMENT NUMBER

140483

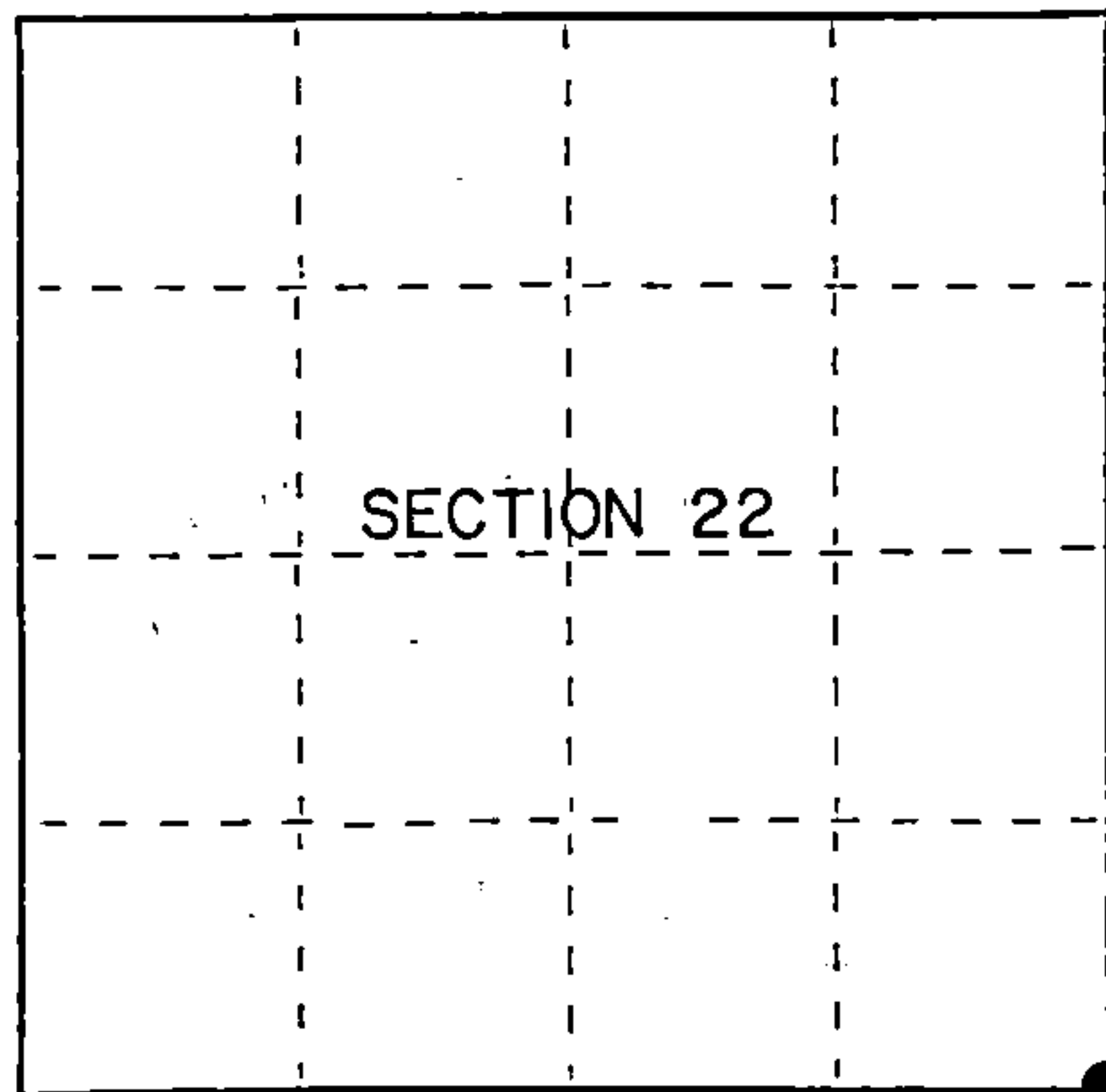
U.S. PUBLIC LAND SURVEY MONUMENT RECORD

Index No. R-17

State of Wisconsin }
County of Forest } ss.

I, Gary L. Pisoni, do hereby
certify that on the 7th day
of November, 1989, I found
evidence of the Southeast Section
corner of Section 22
Township 40, North, Range
14 East, Fourth Principal Meridian,
as described hereon; and that from this evidence
I established a new monument and accessories
as described hereon to perpetuate the original
location of this corner.

Resident witnesses:



● = Corner monument restored.

History of original corner establishment:

Dependent resurvey in 1950 by Hugh B. Crawford, N 01°40'W between Sections 26 and 27, 40.87 chains, corner determined from a 4" squared cedar post, no remaining evidence of the original bearing trees; at the corner position, set an iron post 30" long, 2½" diameter, 24" in the ground with brass cap marked: T40N, R14E, S-22, S-23, S-27, S-26, 1950 from which the following bear:

1944 corner references: Cedar 12" N 63°E 77 links, Cedar 12" S 32¼°E 158 links
Yellow Birch 22" S 63°W 76 links,
1950 corner reference: Cedar 12" N 81 3/4°W 141 links

Description of corner evidence found:

Found monument as described above.

Corner references found:

Cedar	17"	N 65°E	50.82 feet
Cedar	20"	S 32¼°E	104.28 feet
Yellow Birch	28"	S 63°W	50.16 feet
Cedar	16"	N 81 3/4°W	93.06 feet

Description of monument and accessories I established to perpetuate the original location of this corner.

New reference object:

Steel sign post S 47°E 1.05 feet

Dated at Iron River, MI, Wis., this 9th day of December, 1989

Signature Gary L. Pisoni Title Land Surveyor Registration No. S-1634
(County Surveyor, Registered Land Surveyor, or other duly authorized official)

Office of Register of Deeds, County of Forest, I hereby certify that the within
instrument was filed in this office for record on the 20th day of September, 1990
at 10:45 o'clock A. M.

(Register of Deeds)

By Paul Chitko Deputy

44014220000

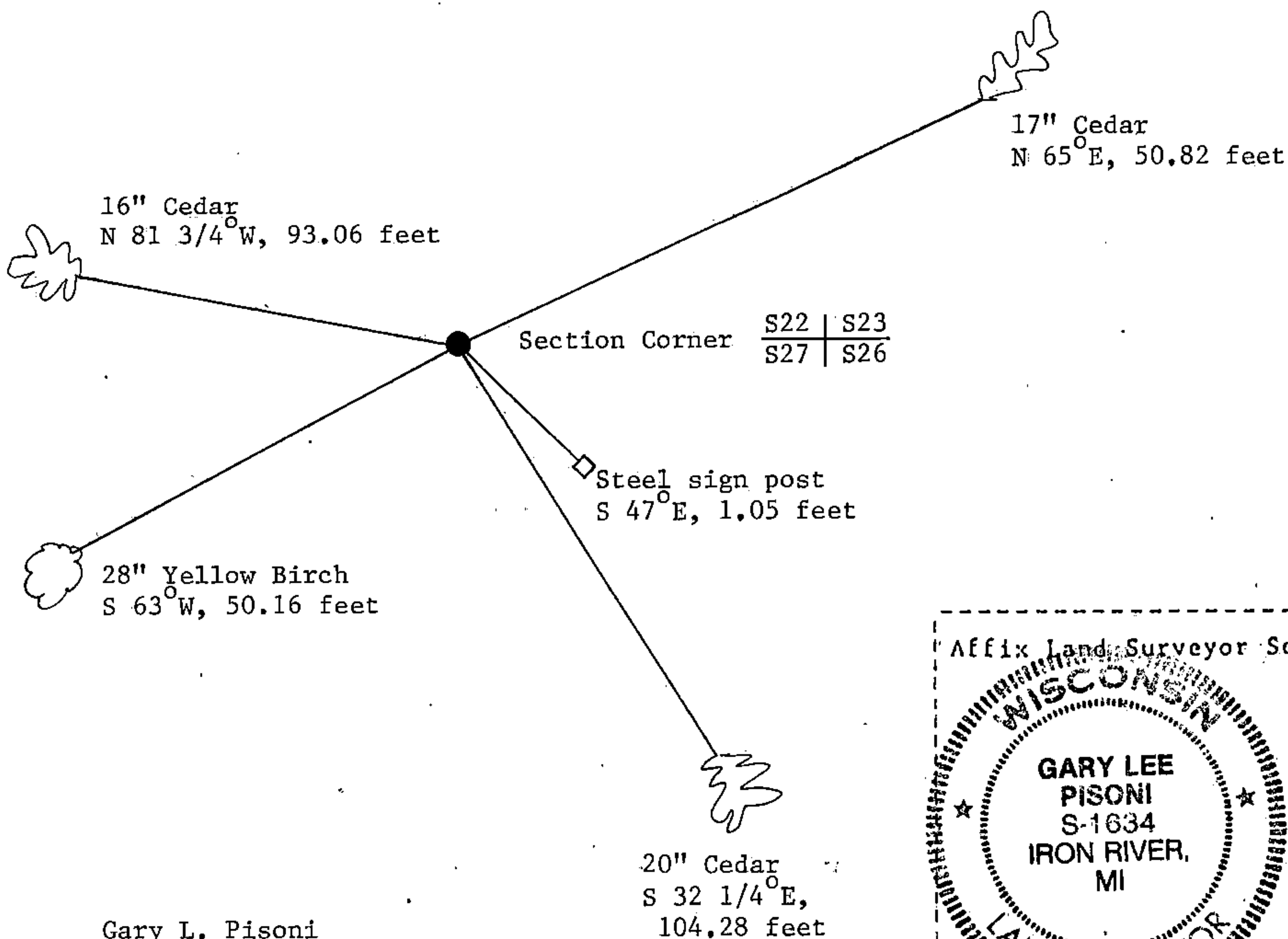
- e) Describe any material discrepancy between the location of the corner as restored or reestablished and the location of that corner as previously restored or reestablished by distance and direction. Show the discrepancy on the plan view drawing under (d), above. Show the distances between the corner as previously restored or reestablished and (1) the corner as restored or reestablished, and (2) to at least 2 of the witness monuments shown on the drawing in (d), above.

See drawing below.

- (f) Was the corner restored through acceptance of (1) an obliterated evidence location, or, (2) a found perpetuated location?

Restored through acceptance of a found perpetuated location.

- (g&h) Was the corner reestablished through lost corner proportionate methods? If so, show the method, including the directions and distances to other public land survey corners used as evidence or used for proportioning in determining the corner location?



Gary L. Pisoni

- (i) I, Gary L. Pisoni (type or print name) certify that the corner location shown on this record was determined by me or under my direction and control and that this U.S. Public Land Survey Monument Record is correct and complete to the best of my knowledge and belief.

Signature

Date

Survey requested by;

District Ranger

Date

