

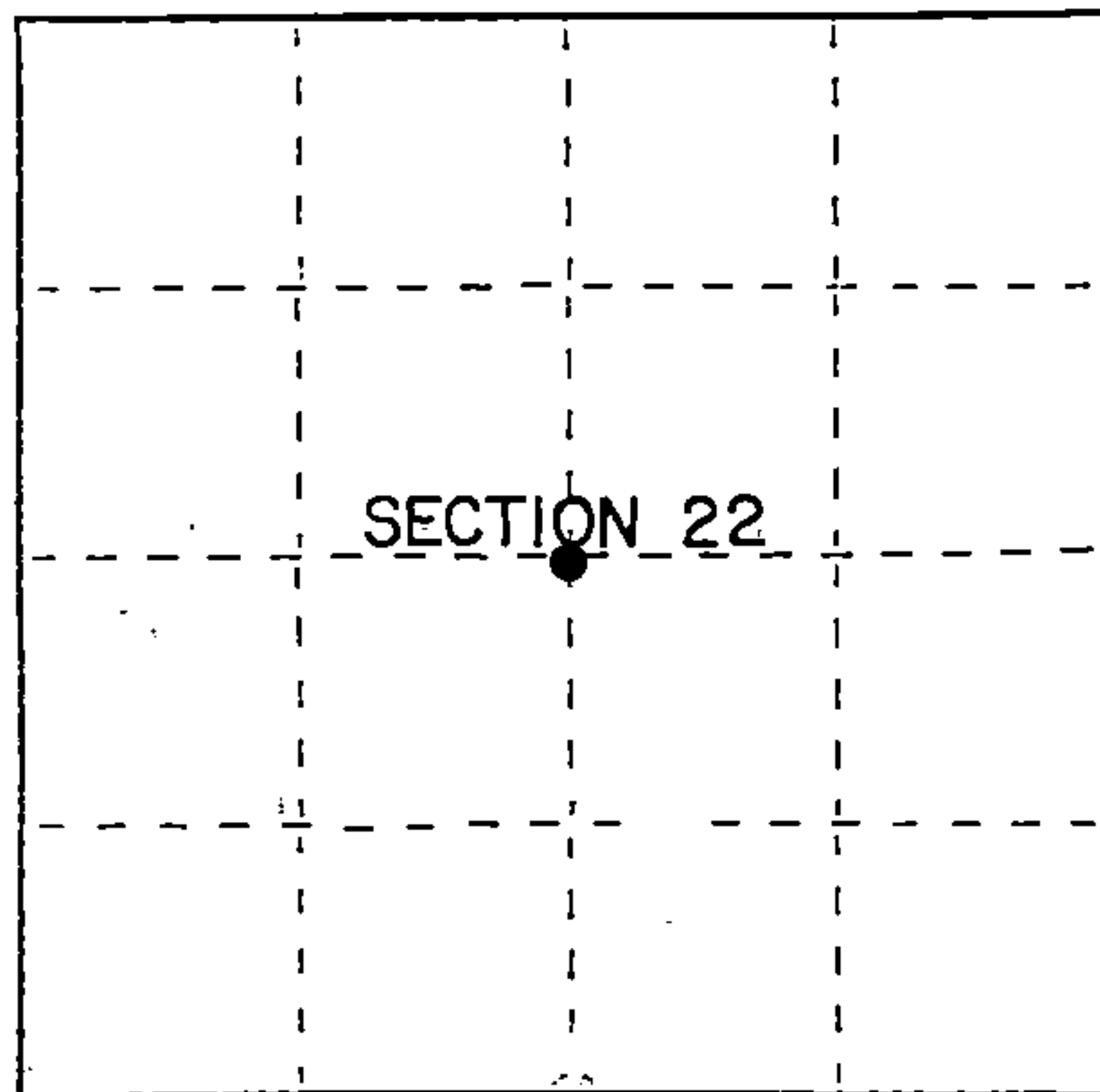
U.S. PUBLIC LAND SURVEY MONUMENT RECORD

Index No. P-15

State of Wisconsin }
County of Forest } ss.

I Gary L. Pisoni, do hereby
certify that on the 9th day
of September, 1989, I found
evidence of the Center quarter
corner of Section 22
Township 40, North, Range
14 East, Fourth Principal Meridian,
as described hereon; and that from this evidence
I established a new monument and accessories
as described hereon to perpetuate the original
location of this corner.

Resident witnesses:



● = Corner monument restored.

History of original corner establishment:

Dependent resurvey in 1950 by Hugh B. Crawford; Set an iron post at the intersection of the East/West, North/South 1/4 lines of Section 22, point for Center one-quarter corner. Set an iron post 30" long, 2" diameter, 26" in the ground with brass cap marked: T40N, R14E, C 1/4, S-22, 1950, from which the following bear:

Spruce	4"	N 02°W	5 links
Spruce	4"	S 5½°E	16½ links

Description of corner evidence found:

Found monument as described above.

1950 Corner reference found:

Spruce	8"	S 01°E	10.74 feet
--------	----	--------	------------

Note: Accepted center one-quarter monument as found above, since it falls within acceptable closure limits for the State of Wisconsin.

The true corner position should be S 62°16'W and 0.88 feet from the present 1950 C 1/4 monument.

Description of monument and accessories I established to perpetuate the original location of this corner.

Blazed and scribed the following new bearing trees: (measurement taken to a nail in side of tree)

Spruce	6"	S 75°E	11.73 feet
Spruce	6"	N 40°W	10.18 feet
Steel sign post		S 55°W	1.3 feet

Dated at Iron River, MI, this 9th day of December, 1989

Signature Gary L. Pisoni Title Land Surveyor Registration No. S-1634
(County Surveyor, Registered Land Surveyor, or other duly authorized official)

Office of Register of Deeds, County of Forest, I hereby certify that the within instrument was filed in this office for record on the 20th day of September, 1990 at 10:45 o'clock A M.

(Register of Deeds)

By Heath Chitko Deputy

FORM NO. 985-A

K.C. Miller Company

Stock No. 26273

DOCUMENT NUMBER

140482

44014222020

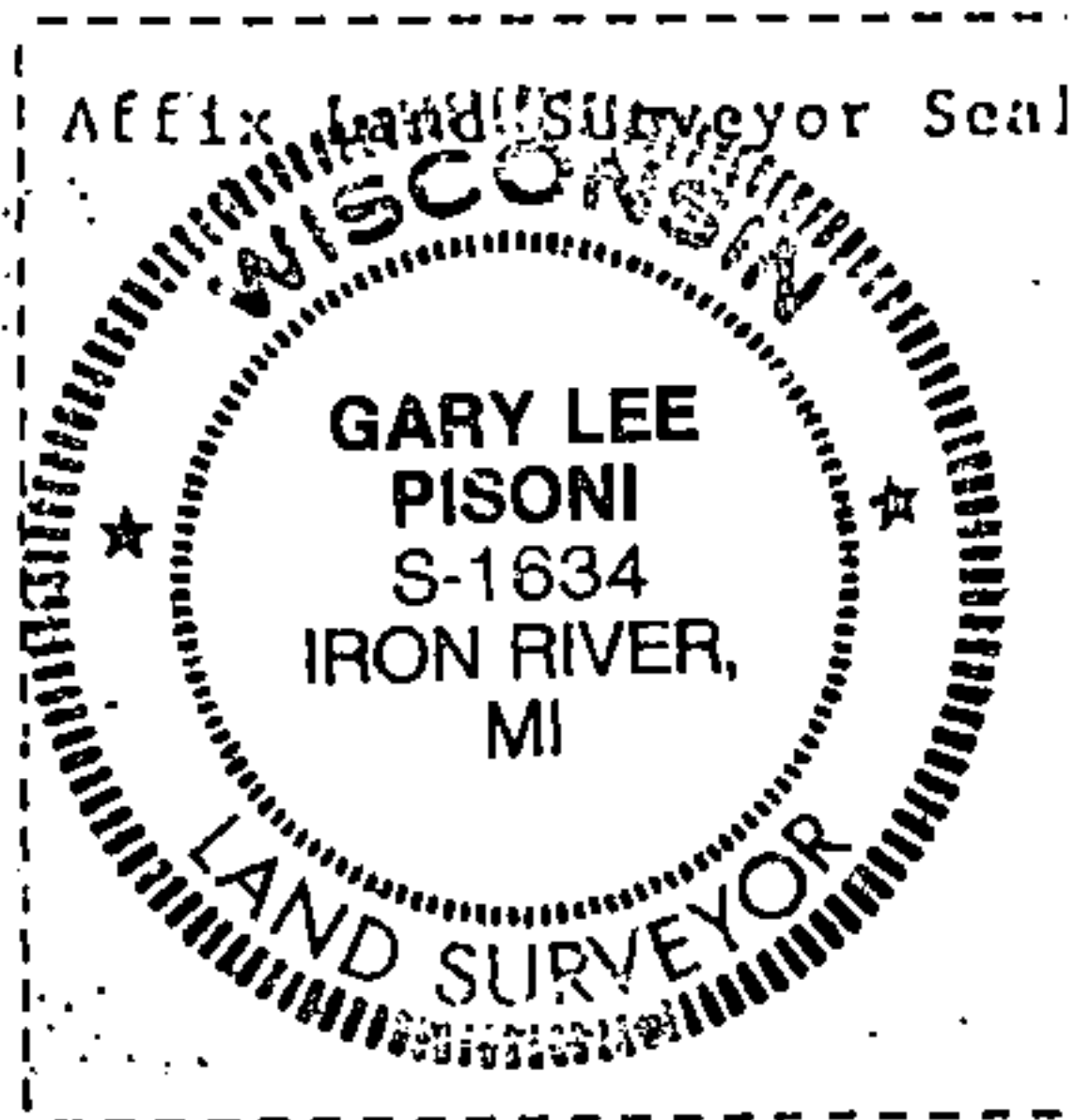
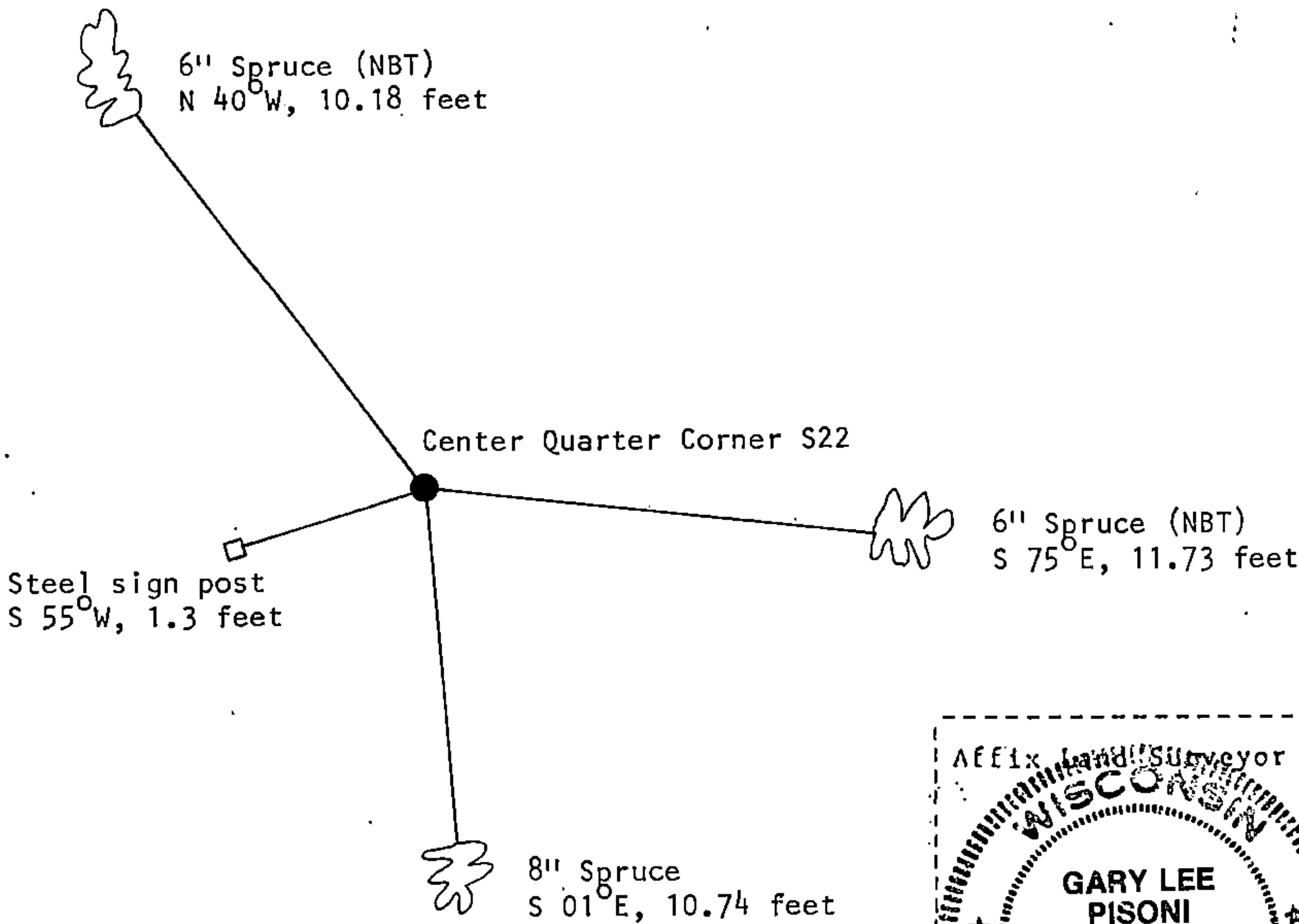
e) Describe any material discrepancy between the location of the corner as restored or reestablished and the location of that corner as previously restored or reestablished by distance and direction. Show the discrepancy on the plan view drawing under (d), above. Show the distances between the corner as previously restored or reestablished and (1) the corner as restored or reestablished, and (2) to at least 2 of the witness monuments shown on the drawing in (d), above.

See drawing below.

f) Was the corner restored through acceptance of (1) an obliterated evidence location, or, (2) a found perpetuated location?

Restored through acceptance of a found perpetuated location.

g&h) Was the corner reestablished through lost corner proportionate methods? If so, show the method, including the directions and distances to other public land survey corners used as evidence or used for proportioning in determining the corner location?



i) 1. Gary L. Pisoni
(Type or print name) certify that the corner location shown on this record was determined by me or under my direction and control and that this U.S. Public Land Survey Monument Record is correct and complete to the best of my knowledge and belief.

Signature

Gary L. Pisoni

Date

Jan-12-1990

Survey Requested by

Edward [unclear]
District Ranger

9-18-90