

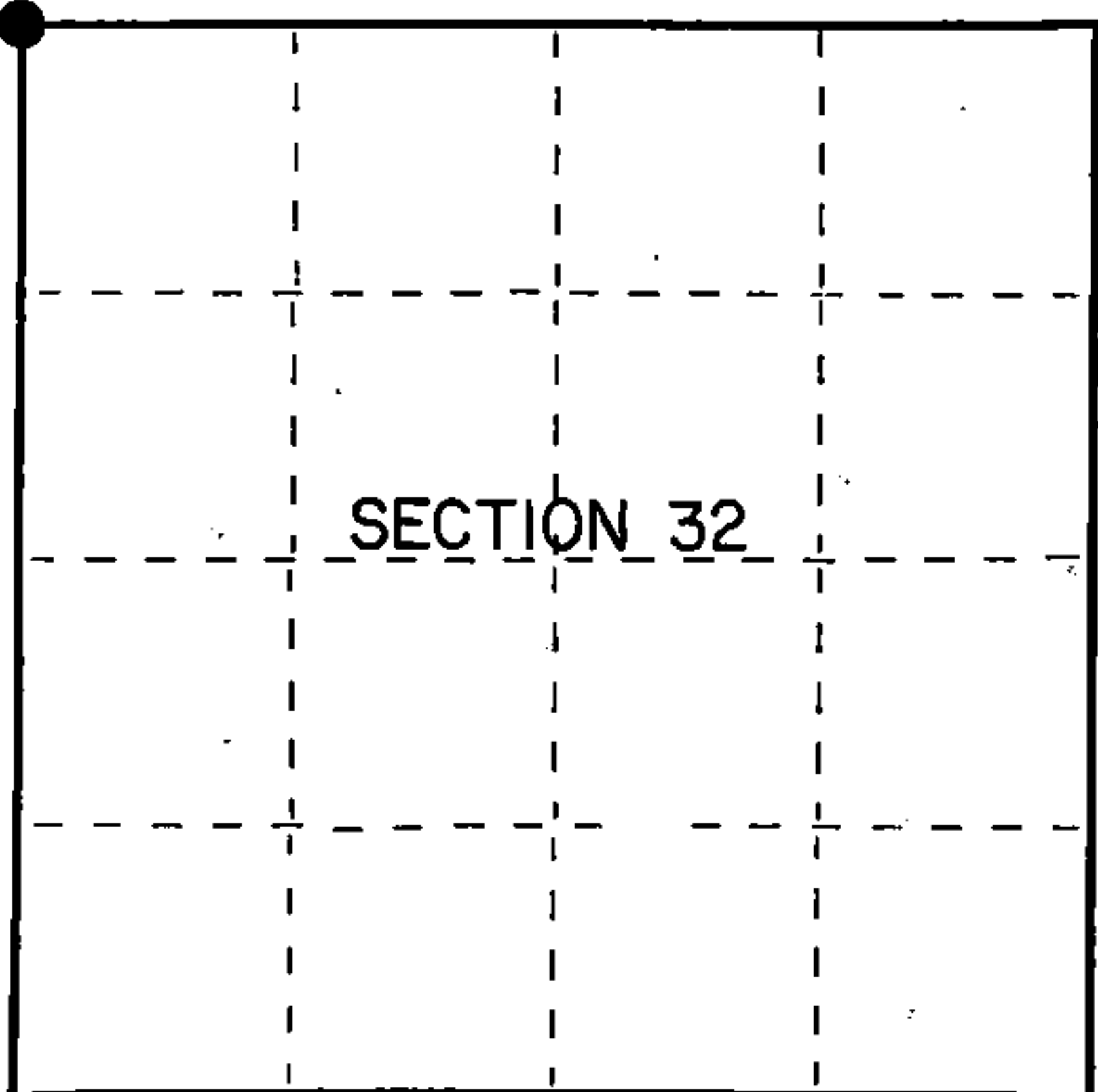
U.S. PUBLIC LAND SURVEY MONUMENT RECORD

Index No. V-5

State of Wisconsin }
County of Forest } ss.

I, Gary L. Pisoni, do hereby certify that on the 6th day of July, 19 89, I found evidence of the Northwest Section corner of Section 32 Township 40, North, Range 14 East, Fourth Principal Meridian, as described hereon; and that from this evidence I established a new monument and accessories as described hereon to perpetuate the original location of this corner.

Resident witnesses:



● = Corner monument restored.

History of original corner establishment:

Original Government Survey in 1865 by William E. Daugherty. North between Sections 31 and 32, 80.00 chains, set Section Corner post to Sections 29, 30, 31 and 32, from which the following bear;

Sugar	16"	S.48°E.	31 links
Hemlock	12"	N.11°W.	42 links

Description of corner evidence found:

Found a bent iron pipe along West edge of a logging road.

I accept the iron pipe as the best available evidence for restoring the corner position.

Description of monument and accessories I established to perpetuate the original location of this corner.

In place of iron pipe, set a 2½ inch diameter aluminum pipe monument, 3 feet long, flush w/ground surface, with an aluminum cap stamped; T40N, R14E, S29, S30, S31, S32, 1989, S-1634. From which the following new blazed and scribed bearing trees bear (all measurements taken to a nail in side of tree):

Sugar Maple	14"	S.85°W	64.86 feet
Sugar Maple	10"	S.85°E.	45.23 feet
Sugar Maple	6"	S.33°E.	59.27 feet
Sugar Maple	10"	N.22°W.	38.10 feet
Steel Sign Post		N.47°W.	1.00 feet

Dated at Iron River, MI, ~~Wis.~~, this 2nd day of November, 19 89

Signature Gary L. Pisoni Title Land Surveyor Registration No. S-1634
(County Surveyor, Registered Land Surveyor, or other duly authorized official)

Office of Register of Deeds, County of Forest, I hereby certify that the within instrument was filed in this office for record on the 20th day of September, 19 90 at 10:45 o'clock A M.

(Register of Deeds)

By Glenn Chitko Deputy

4-10-14 300000

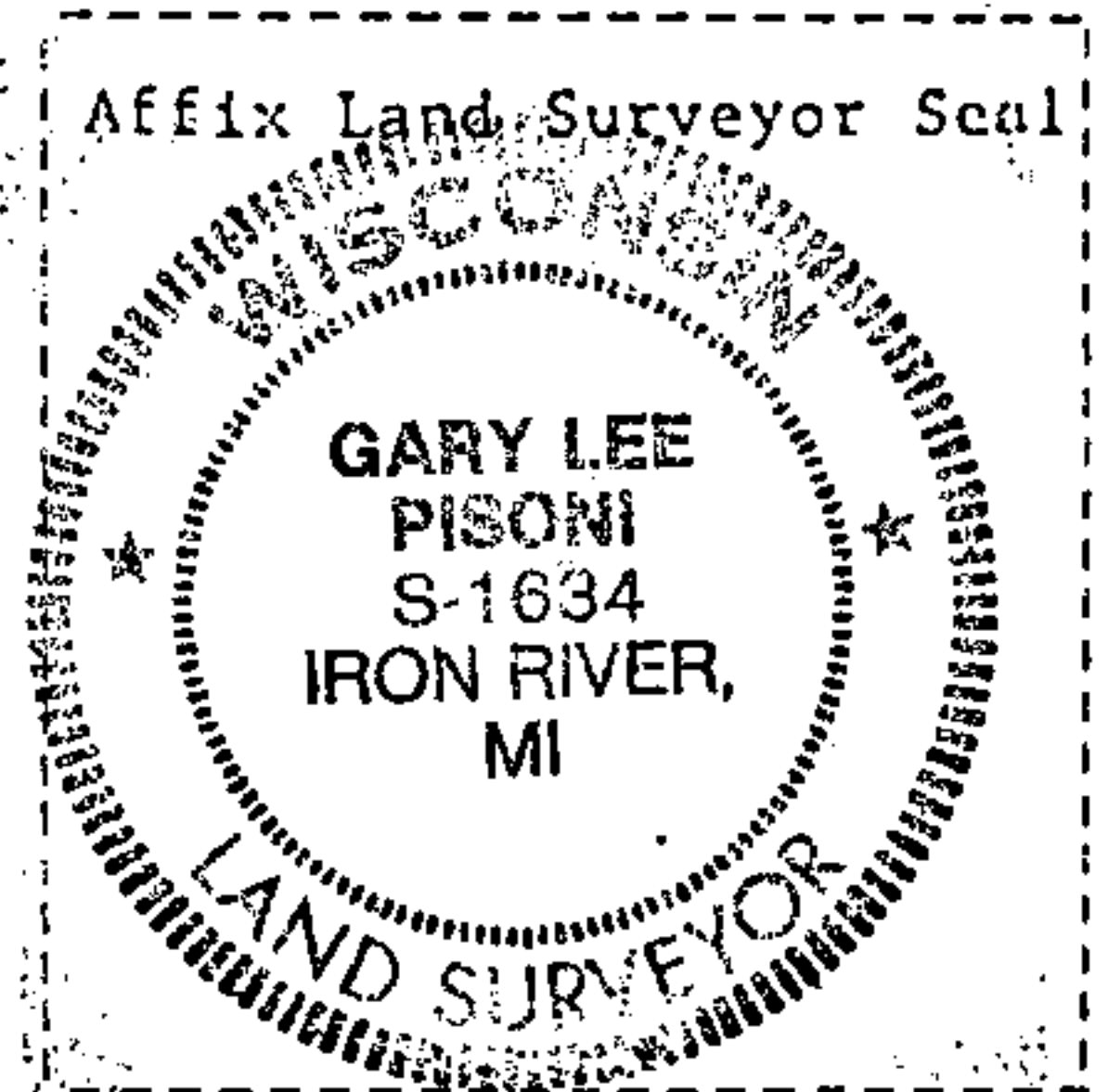
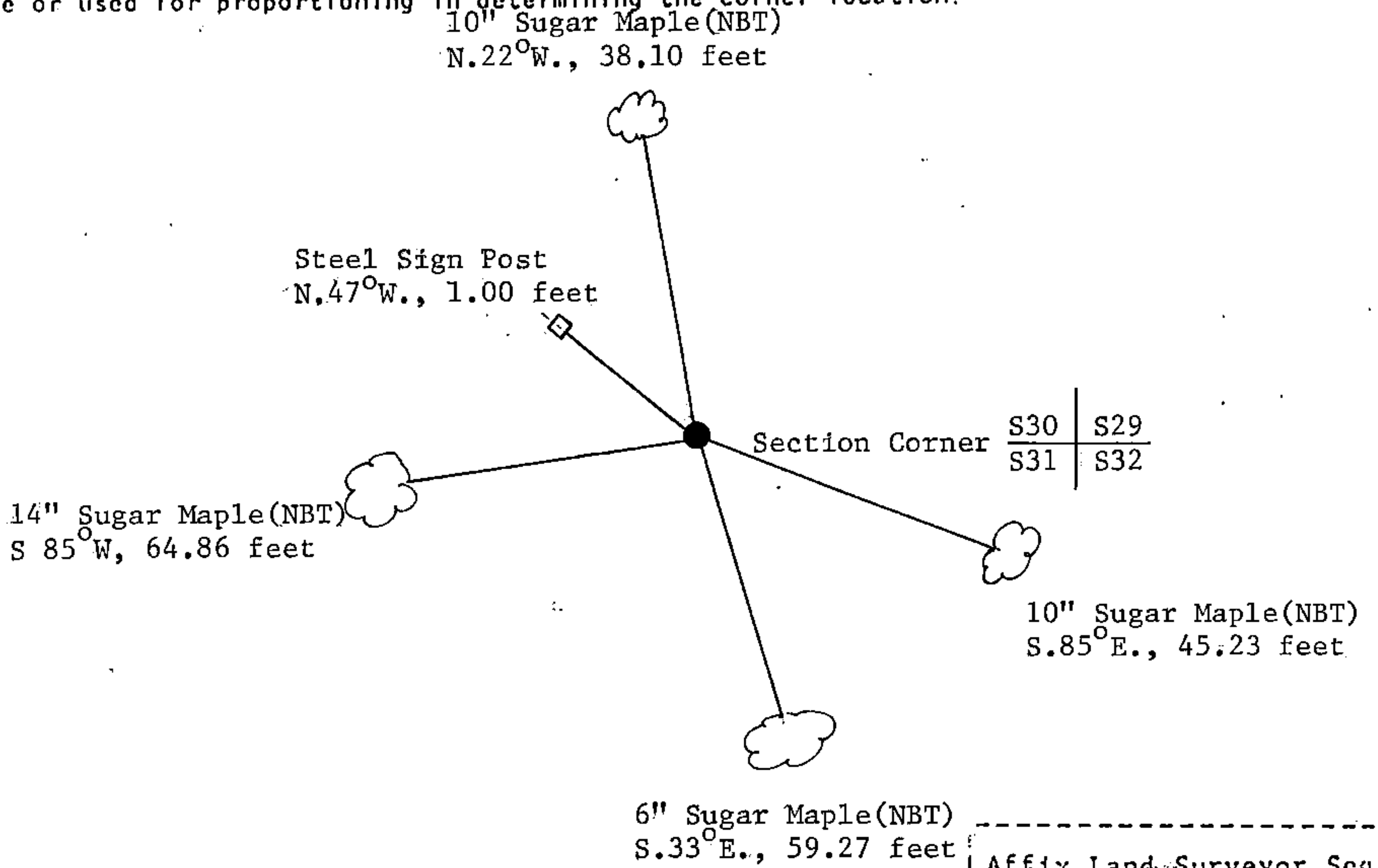
(e) Describe any material discrepancy between the location of the corner as restored or reestablished and the location of that corner as previously restored or reestablished by distance and direction. Show the discrepancy on the plan view drawing under (d), above. Show the distances between the corner as previously restored or reestablished and (1) the corner as restored or reestablished, and (2) to at least 2 of the witness monuments shown on the drawing in (d), above.

See drawing below.

(f) Was the corner restored through acceptance of (1) an obliterated evidence location, or, (2) a found perpetuated location?

Restored from accepted evidence.

(g&h) Was the corner reestablished through lost corner proportionate methods? If so, show the method, including the directions and distances to other public land survey corners used as evidence or used for proportioning in determining the corner location?



(i) I, Gary L. Pisoni
(type or print name) certify that the corner location shown on this record was determined by me or under my direction and control and that this U.S. Public Land Survey Monument Record is correct and complete to the best of my knowledge and belief.

Signature Gary L. Pisoni Date Jan 12 1996

Survey requested by; [Signature] Date 9-18-90
District Ranger