

U.S. PUBLIC LAND SURVEY MONUMENT RECORD

Index No. V-3

State of Wisconsin
County of Forest } ss.

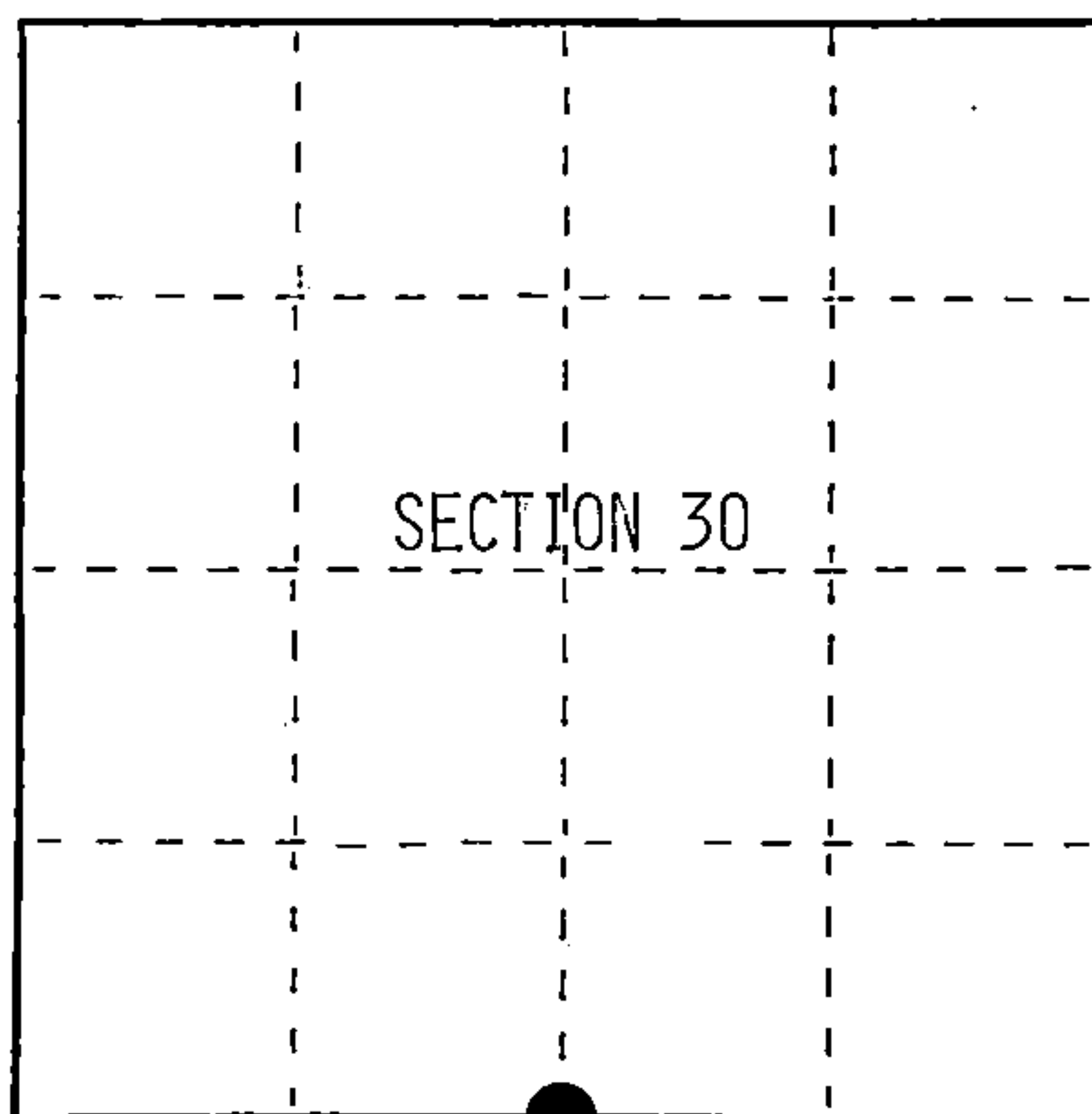
I, William B. Cochran, do hereby
certify that on the 3rd day
of June, 1981, I found
evidence of the South Quarter
corner of Section 30
Township 40, North, Range
14 East, Fourth Principal Meridian,
as described hereon; and that from this evidence
I established a new monument and accessories
as described hereon to perpetuate the original
location of this corner.

Resident witnesses:

.....

.....

.....



● = Corner monument restored.

History of original corner establishment:

Original Government Survey in 1865 by William E. Daugherty. East corrected between
Sections 30 and 31, at 43.46 chains, set Quarter Section Post to Sections 30 and 31.
From which the following bear;

Birch	10"	N18°W	25 links
Fir	10"	S 1°E	14 links

Description of corner evidence found:

Found the Quarter Corner marked by a 1½ inch diameter iron pipe, 3 feet long,
with a hand forged point. No original evidence of a post or bearing trees were
found. I believe the pipe has been in place for over 50 years. Similar iron pipe
were found at the Section Corner to the West, the Quarter Corner between Sections
31 and 36, and the Southwest Township Corner. These pipes agreed with original
bearing tree evidence found at these locations. Based on this evidence, I accept
the iron pipe as the best available evidence for restoring the Quarter Corner.

Description of monument and accessories I established to perpetuate the original location of this corner.

I replaced the iron pipe with a 2½ inch diameter aluminum pipe monument, 30 inches
long, with an aluminum cap stamped; T40N R14E, 1/4, S30, S31, 1981. From which the
following new blazed and scribed bearing trees bear;

Spruce	22"	S62°E	44.85 feet
Maple	10"	S12°W	72.82 feet
Steel Sign Post		SE	0.50 feet

Dated at Hiles, Wis., this 15th day of February, 1990

Signature William B. Cochran Title Land Surveyor Registration No. S-1107
(County Surveyor, Registered Land Surveyor, or other duly authorized official)

Office of Register of Deeds, County of Forest, I hereby certify that the within
instrument was filed in this office for record on the 20th day of September, 1990
at 10:45 o'clock A. M.

(Register of Deeds)

By Shad Chitto Deputy

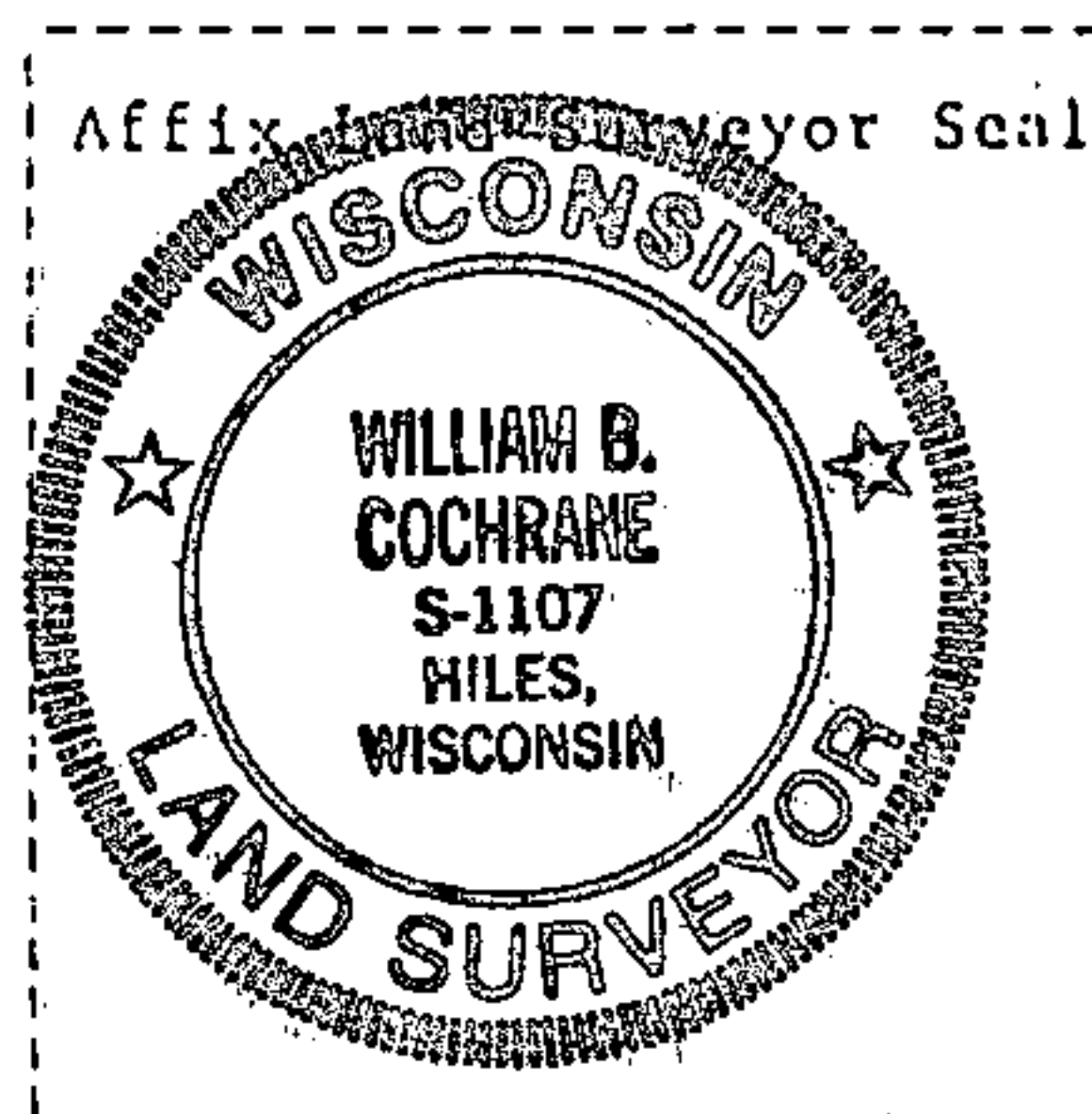
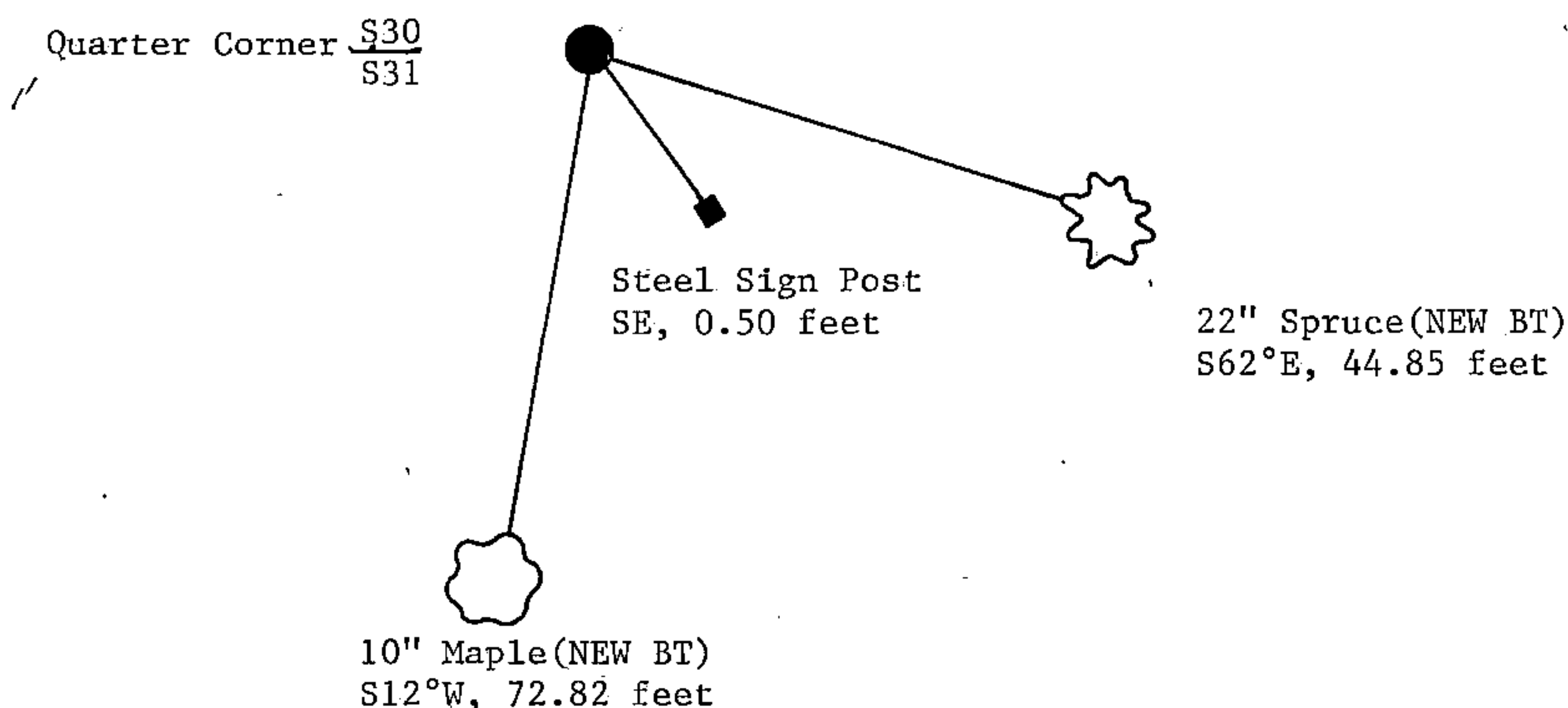
(e) Describe any material discrepancy between the location of the corner as restored or reestablished and the location of that corner as previously restored or reestablished by distance and direction. Show the discrepancy on the plan view drawing under (d), above. Show the distances between the corner as previously restored or reestablished and (1) the corner as restored or reestablished, and (2) to at least 2 of the witness monuments shown on the drawing in (d), above.

See drawing below.

(f) Was the corner restored through acceptance of (1) an obliterated evidence location, or, (2) a found perpetuated location?

Restored from accepted evidence.

(g&h) Was the corner reestablished through lost corner proportionate methods? If so, show the method, including the directions and distances to other public land survey corners used as evidence or used for proportioning in determining the corner location?



(i) I, William B. Cochrane
(type or print name) certify that the corner location shown on this record was determined by me or under my direction and control and that this U.S. Public Land Survey Monument Record is correct and complete to the best of my knowledge and belief.

William B. Cochrane Feb 20, 1990
Signature Date

Survey requested by: Edward G. [Signature] 9-18-98
District Ranger Date